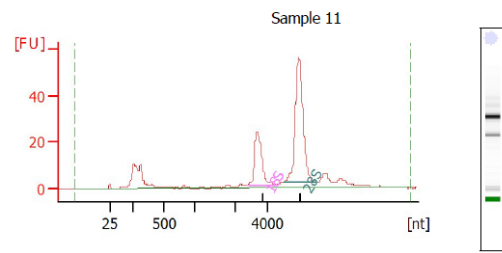


Overall Results for sample 10 : Sample 10

RNA Area: 135.6
 RNA Concentration: 166 ng/μl
 rRNA Ratio [28s / 18s]: 2.2
 RNA Integrity Number (RIN): 9.2 (B.02.08)
 Result Flagging Color:
 Result Flagging Label: RIN: 9.20

Fragment table for sample 10 : Sample 10

Name	Start Size [nt]	End Size [nt]	Area	% of total Area
18S	2,085	4,655	25.3	18.6
28S	5,157	6,996	54.7	40.3

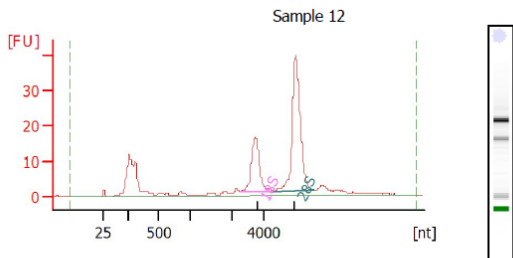


Overall Results for sample 11 : Sample 11

RNA Area: 353.7
 RNA Concentration: 433 ng/μl
 rRNA Ratio [28s / 18s]: 2.3
 RNA Integrity Number (RIN): 9.4 (B.02.08)
 Result Flagging Color:
 Result Flagging Label: RIN: 9.40

Fragment table for sample 11 : Sample 11

Name	Start Size [nt]	End Size [nt]	Area	% of total Area
18S	2,786	4,613	59.7	16.9
28S	5,038	7,055	134.9	38.1



Overall Results for sample 12 : Sample 12

RNA Area: 282.4
 RNA Concentration: 346 ng/μl
 rRNA Ratio [28s / 18s]: 2.2
 RNA Integrity Number (RIN): 9.2 (B.02.08)
 Result Flagging Color:
 Result Flagging Label: RIN: 9.20

Fragment table for sample 12 : Sample 12

Name	Start Size [nt]	End Size [nt]	Area	% of total Area
18S	2,527	4,591	44.8	15.9
28S	4,634	7,020	97.5	34.5