

Figure A Dot plots of sequence assembly for *S. cerevisiae* W303. Assembly produced by Patch using runCA-assembled contigs and ECTools-corrected long reads as inputs. (Reference genome: 18 scaffolds from [NCBI](https://www.ncbi.nlm.nih.gov/assembly/gca000000000/))

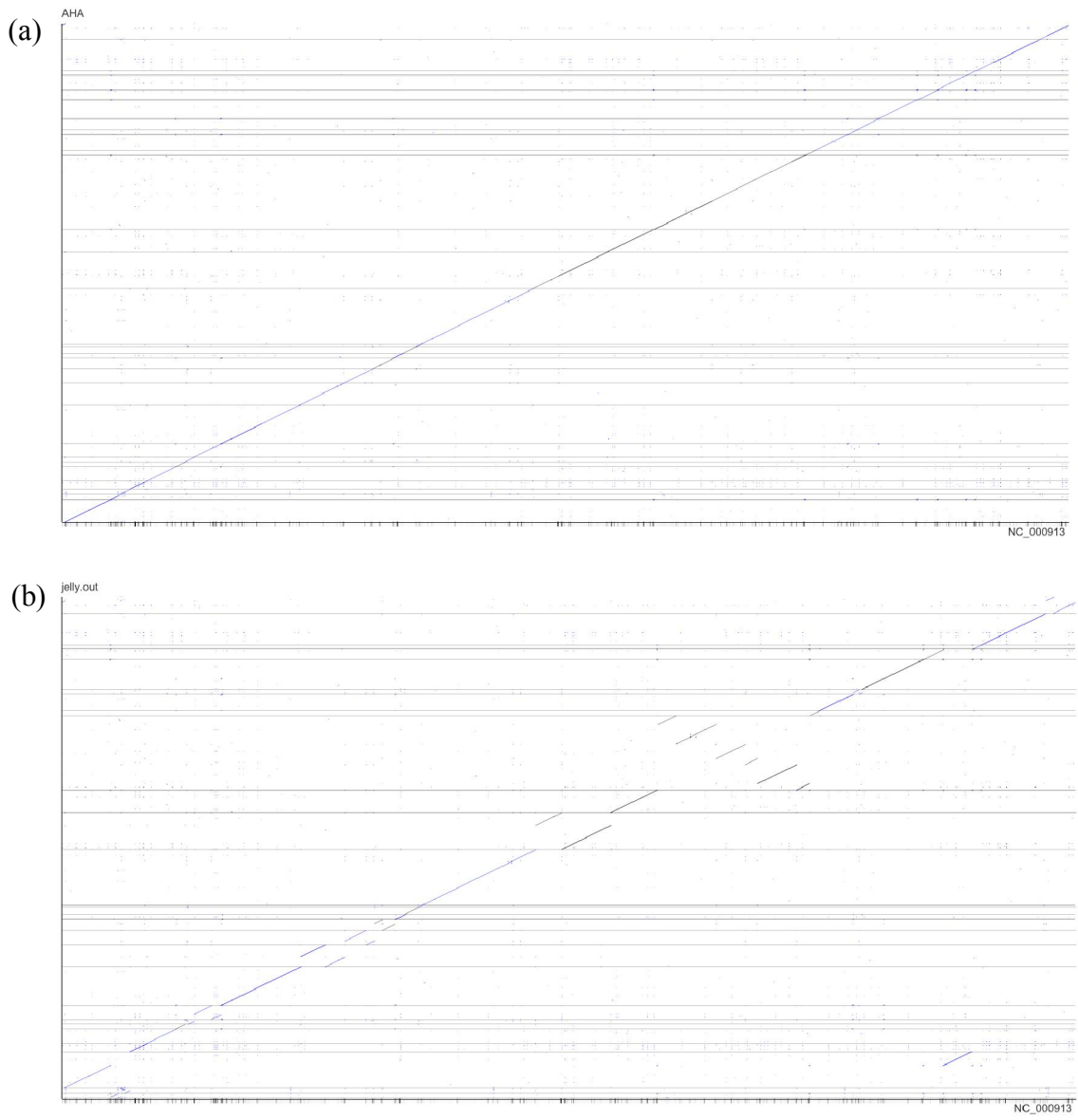


Figure B Dot plots of sequence assemblies produced by (a) AHA and (b) AHA followed by PBJelly using Abyss-assembled contigs and SMRT1 as inputs.

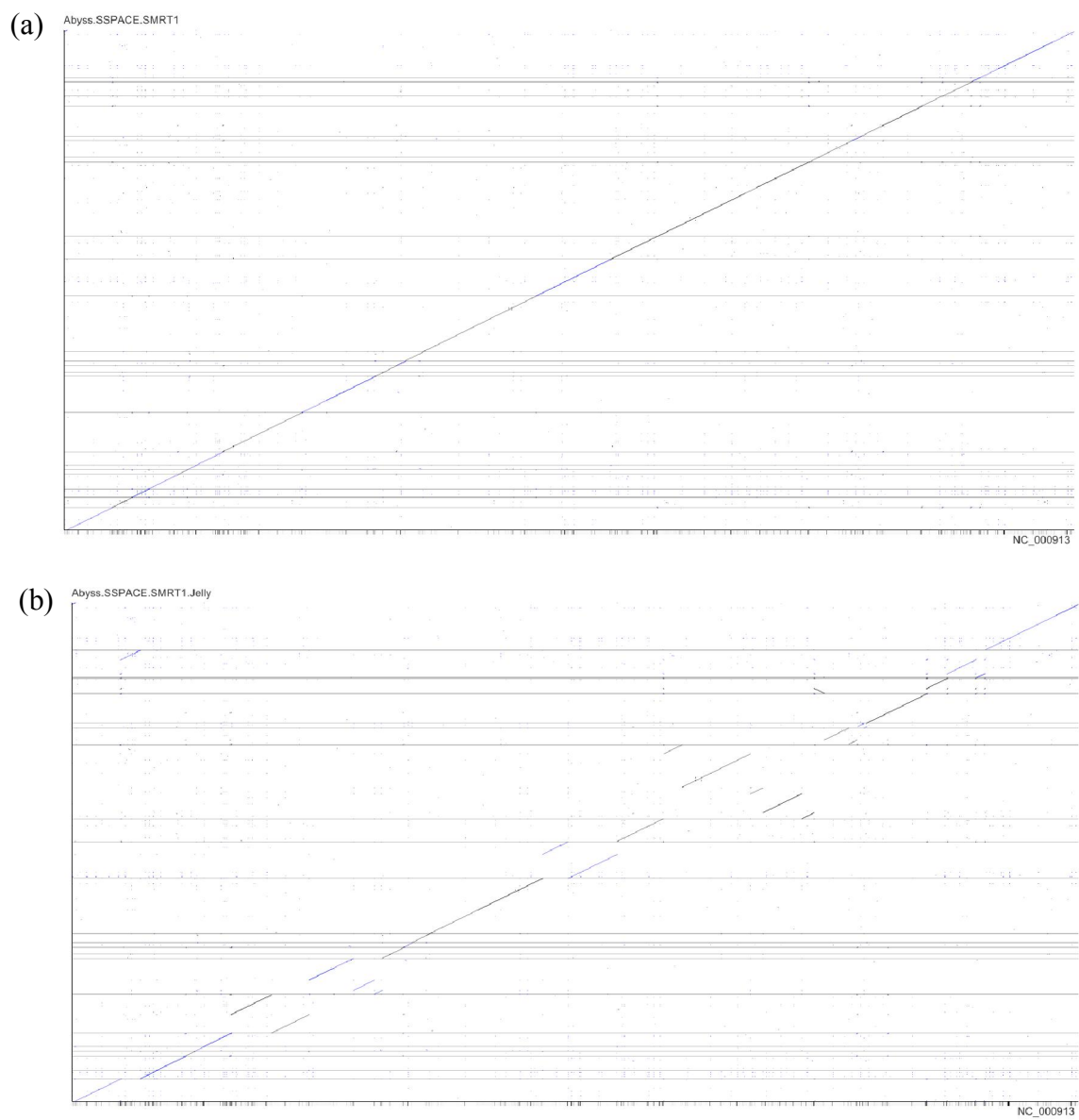


Figure C Dot plots of sequence assemblies produced by (a) SSPACE-LongRead and (b) SSPACE-LongRead followed by PBJelly using Abyss-assembled contigs and SMRT1 as inputs.

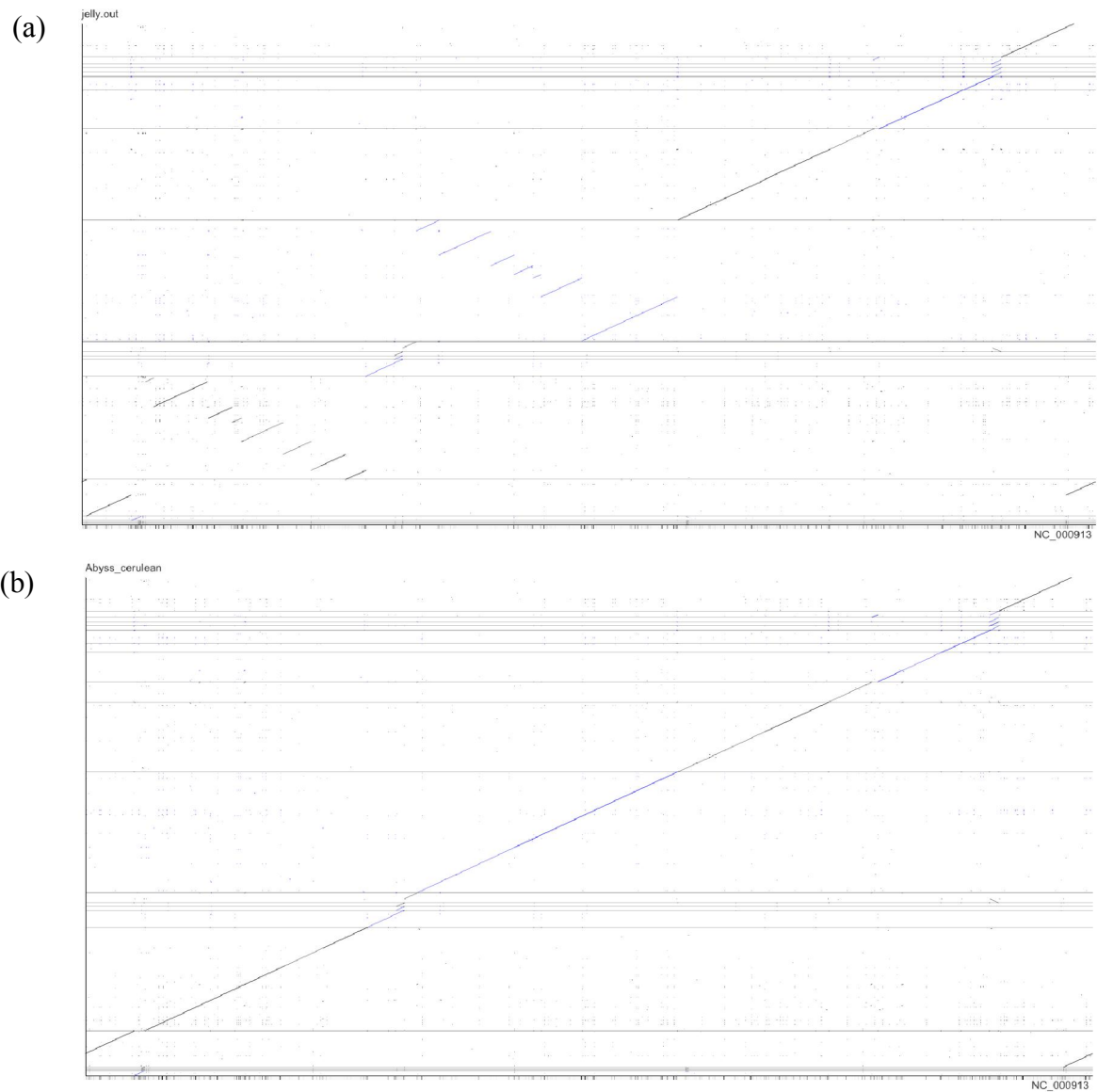


Figure D Dot plots of sequence assemblies produced by Cerulean (a) via post-process with PBJelly and (b) without PBJelly using Abyss-assembled contigs and SMRT1 as inputs.