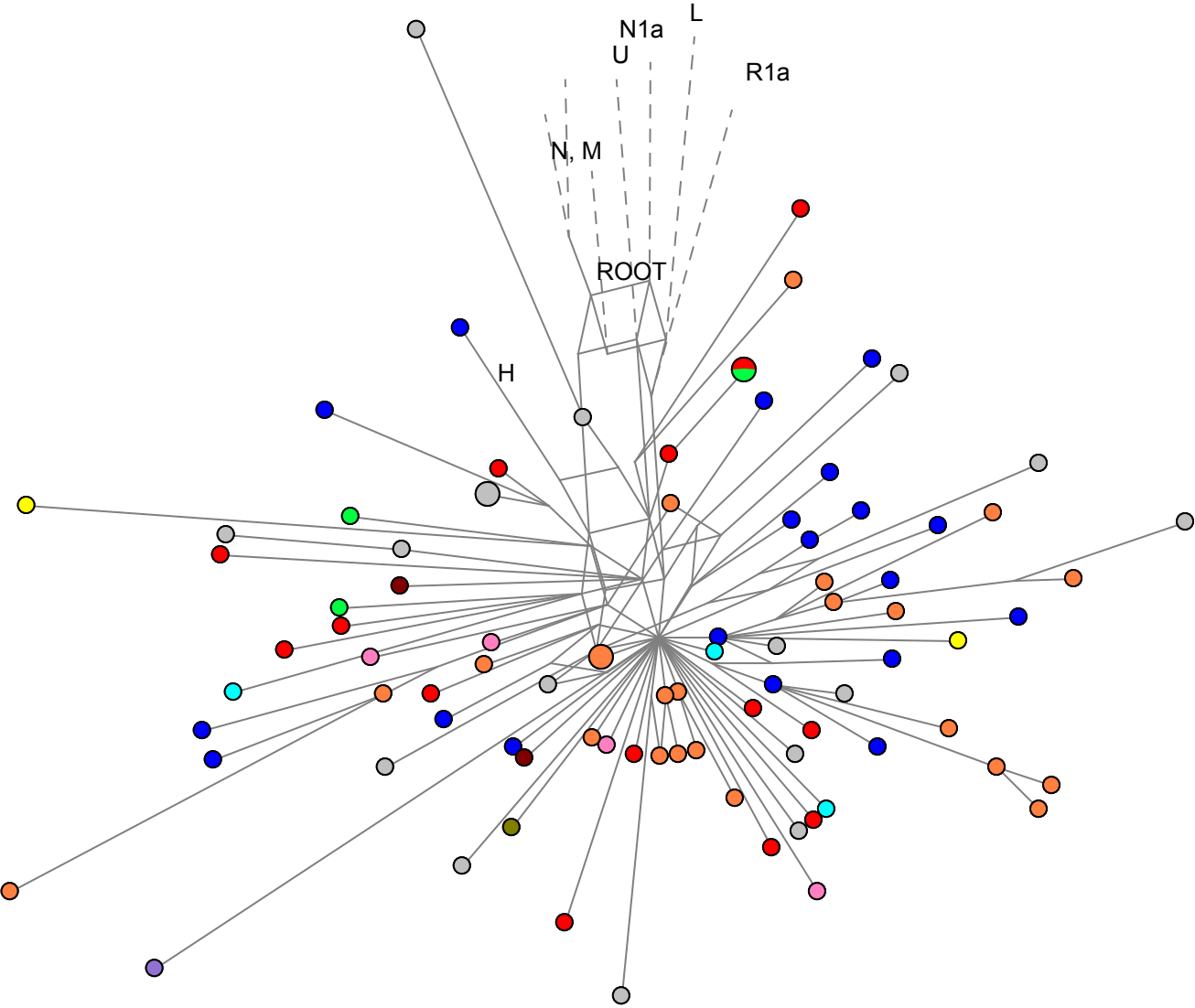


S14 Fig. Median-joining networks for major lineage blocks: haplogroups within the 16311 block, including HV-16311* and HV*.
 Colored by geographic origin of the samples. Mutations are given equal weights.



- LEGEND:
- | | | |
|------------------|------------------------|---------------|
| ■ South Italy | ■ Africa | ■ Middle East |
| ■ North Italy | ■ North/Western Europe | ■ Caucasus |
| ■ Italy "Others" | ■ South Europe | ■ East Europe |
| | | ■ India |
| | | ■ No Info |