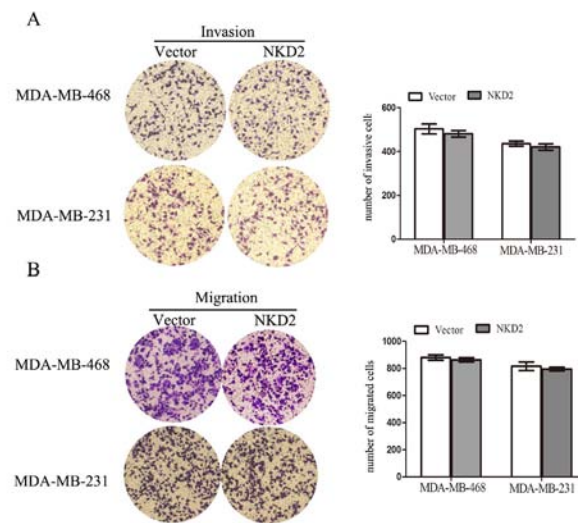


SUPPLEMENTARY FIGURE AND TABLE



Supplementary Figure S1: The effect of NKD2 in cell migration and invasion. **A.** Cell invasion in NKD2 unexpressed and expressed MDA-MB-468 and MDA-MB-231 cells. The number of invasive cells is presented by bar diagram. Each experiment was repeated for three times, all $P > 0.05$. **B.** Cell migration in NKD2 unexpressed and expressed MDA-MB-468 and MDA-MB-231 cells. The number of migratory cells is presented by bar diagram. Each experiment was repeated for three times, all $P > 0.05$.

Supplementary Table S1. RT-PCR and MSP primer sequences

RT-PCR primers
NKD1- Forward: 5'-AACCACTACTTAGATCTCGCCG-3'
NKD1- Reverse: 5'-GAGCCGTTGCTGGAGCTCTG-3'
NKD2- Forward: 5'-ACAGGAGGTTGTCTGCACACG-3'
NKD2- Reverse: 5'-GACTTGAGGAAGTCTTCTCCG-3'
GAPDH- Forward: 5'-GACCACAGTCCATGCCATCAC-3'
GAPDH- Reverse: 5'-GTCCACCACCTGTTGCTGTA-3'
MSP primers
NKD1-M- Forward: 5'-GTTTCGGCGTTTTTCGGGCGTTAGTC-3'
NKD1-U- Forward: 5'-GGGTTTGGTGTTTTTGGGTGTTAGTT-3'
NKD1-M- Reverse: 5'-AAATTTCCCATACTAAAACACTACGACG-3'
NKD1-U- Reverse: 5'-TAAAATTTCCCATACTAAAACACTACAACA-3'
NKD2-M- Forward: 5'- GTTGTCGTCGTTGTTTTTCGCGTTTTGC-3'
NKD2-U- Forward: 5'- GTTGTTGTTGTTGTTGTTTTTGTGTTTTGT-3'
NKD2-M- Reverse: 5'- AAATAAAAAAAAAATAACTCCACGCCGCG -3'
NKD2-U- Reverse: 5'- AAAAAATAAAAAAAAAATAACTCCACACCACA -3'
bisulfite sequencing primers
NKD2- Forward: 5'-GTTGGTGGGGTTTTAGGTTGG-3'
NKD2- Reverse: 5'-AACTAAATTCTAAAACCRAAACC-3'