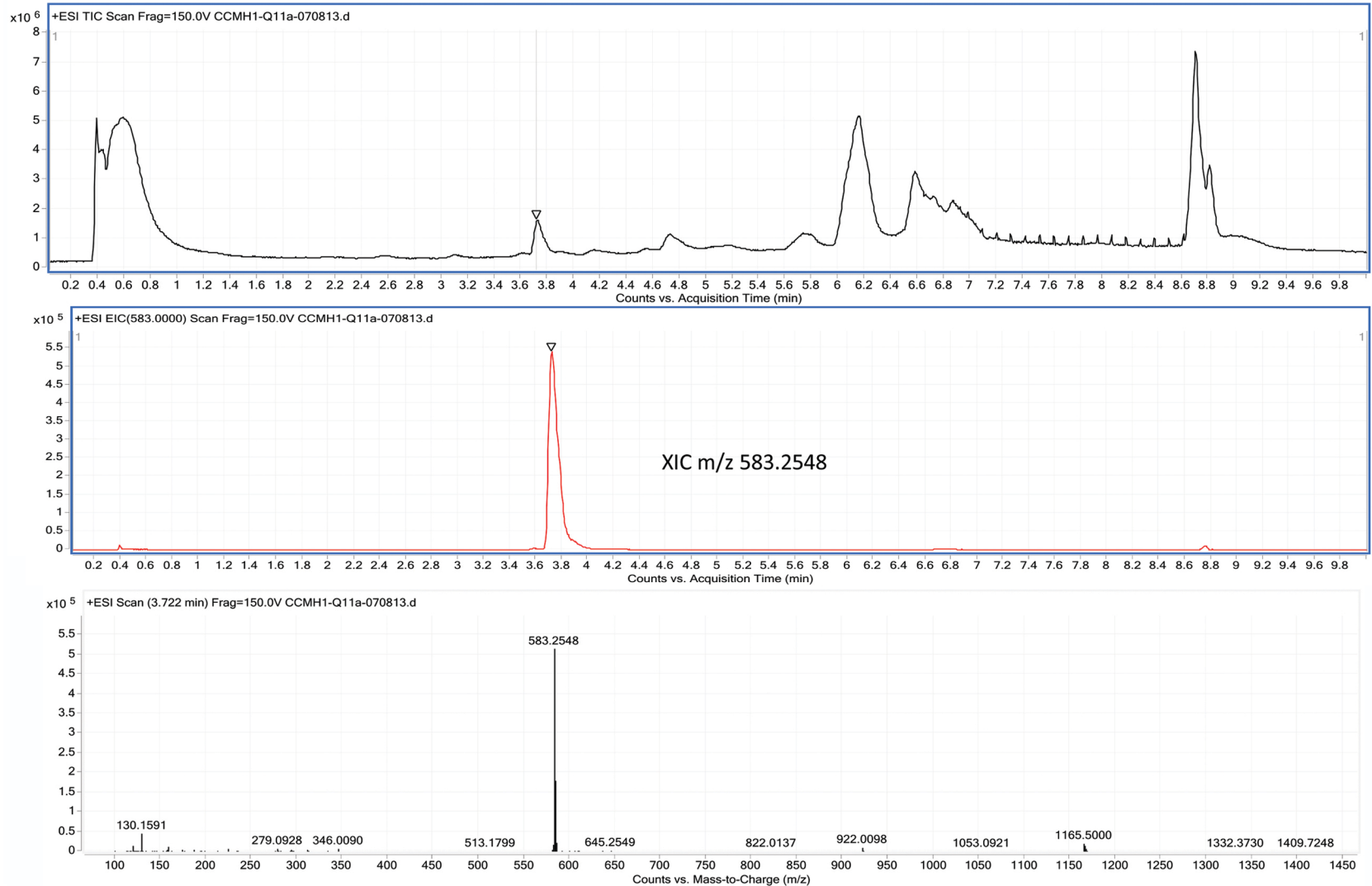


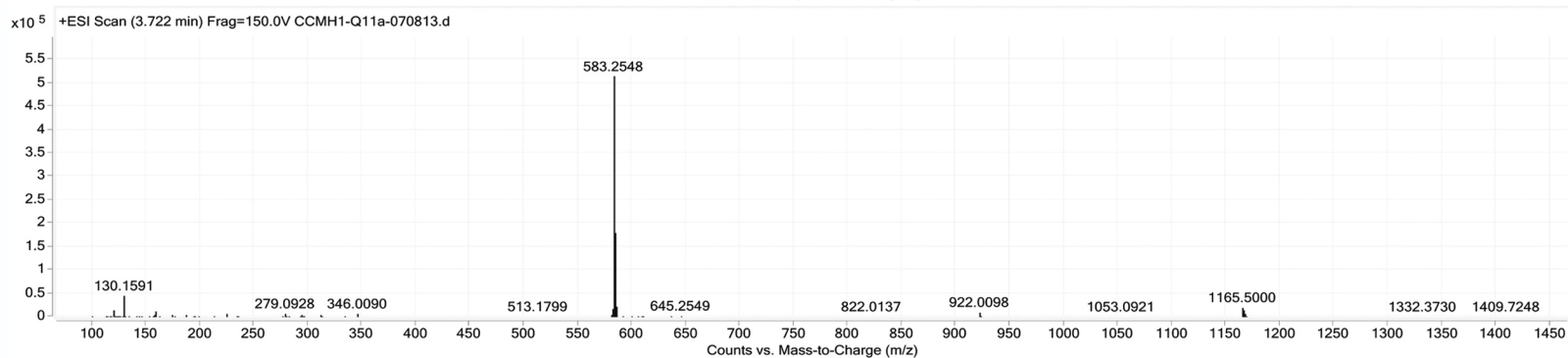
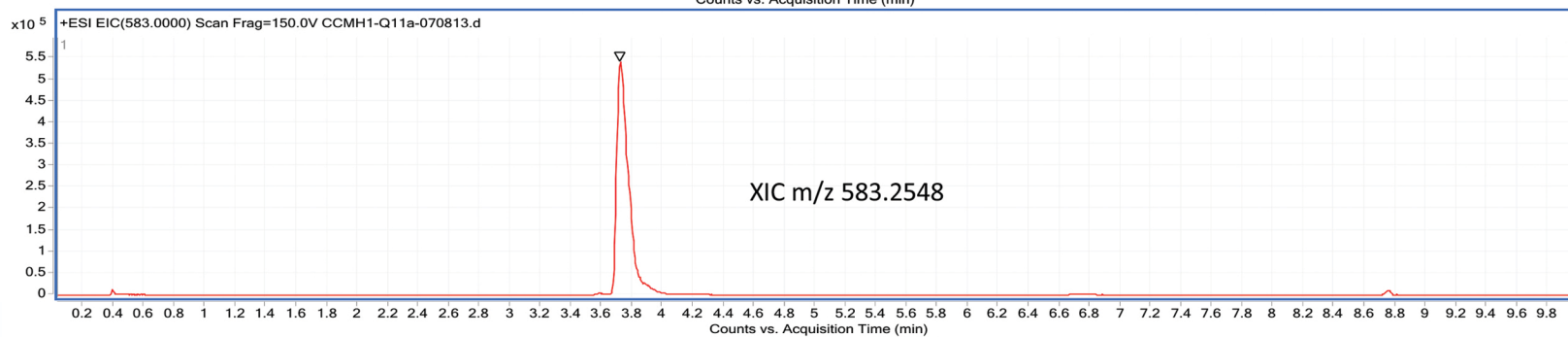
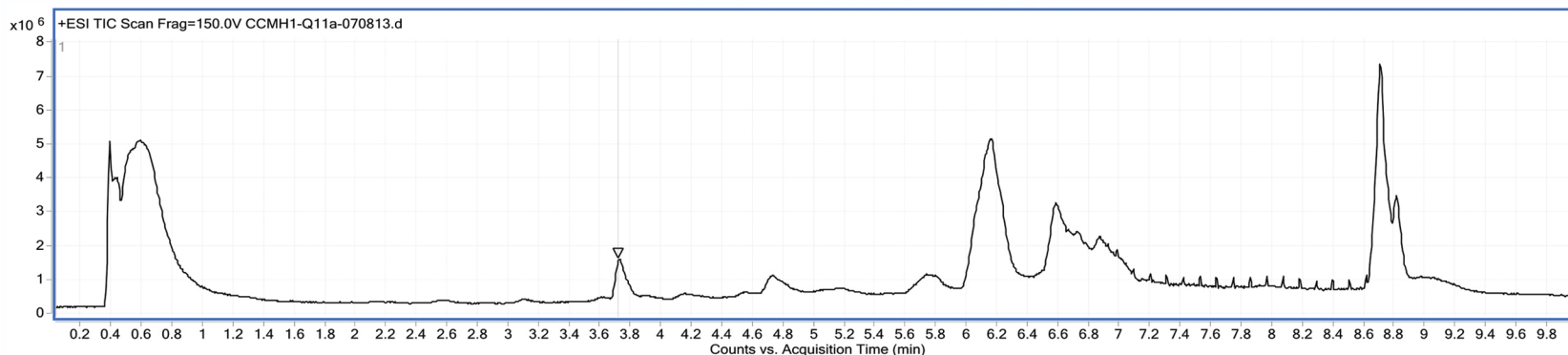
S2 Figure. UHPLC/MS chromatograms for pigment extracts from all avian eggshells and molluscan shells included in the study.

Japanese Quail (at 583)

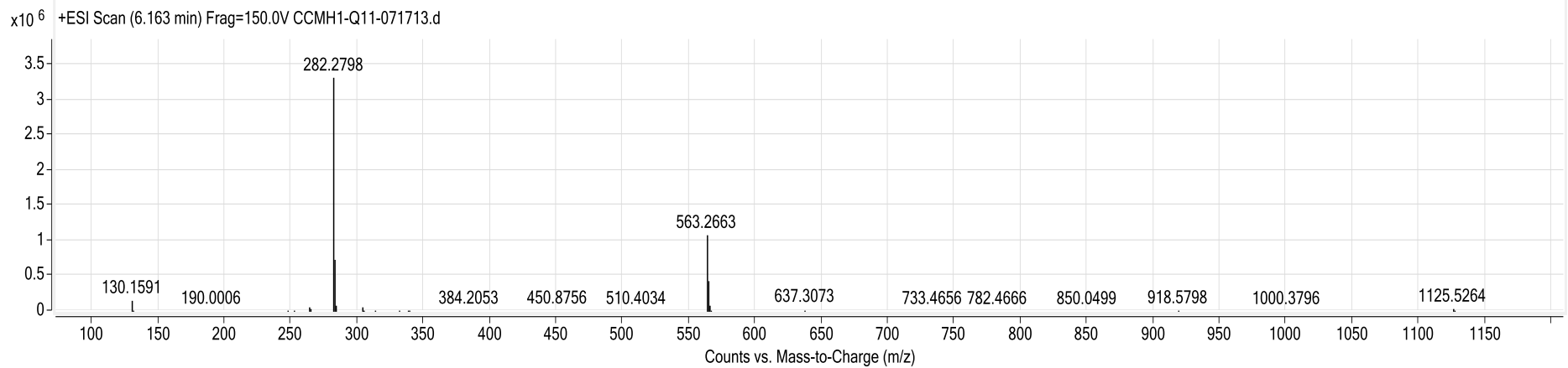
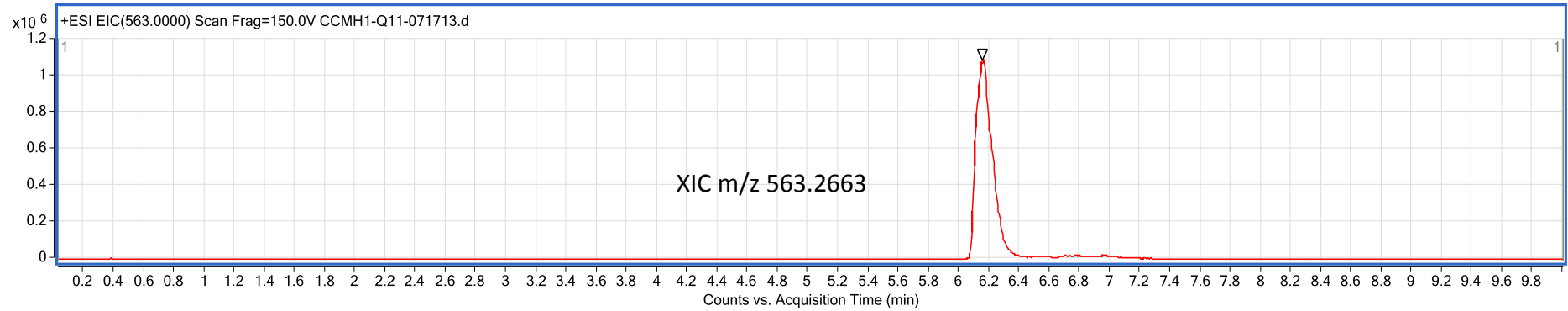
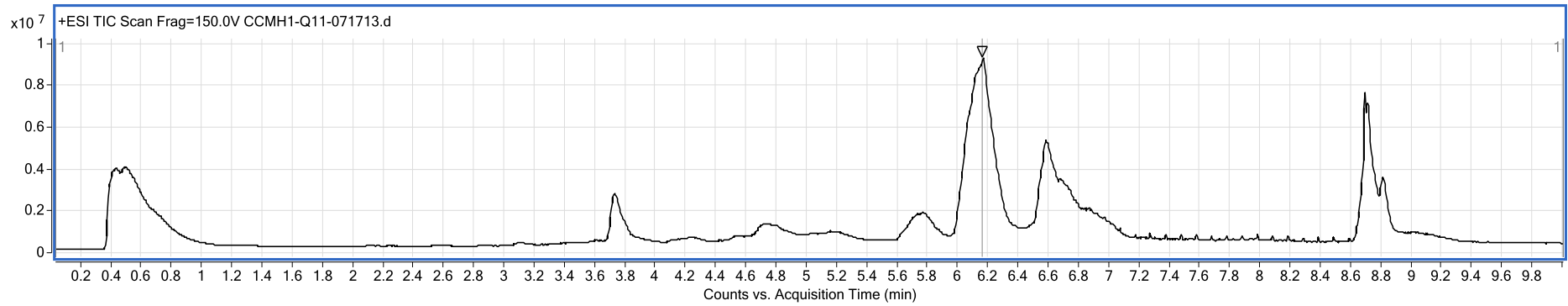


ESM_1 UHPLC/MS chromatograms of all taxa included in the analysis

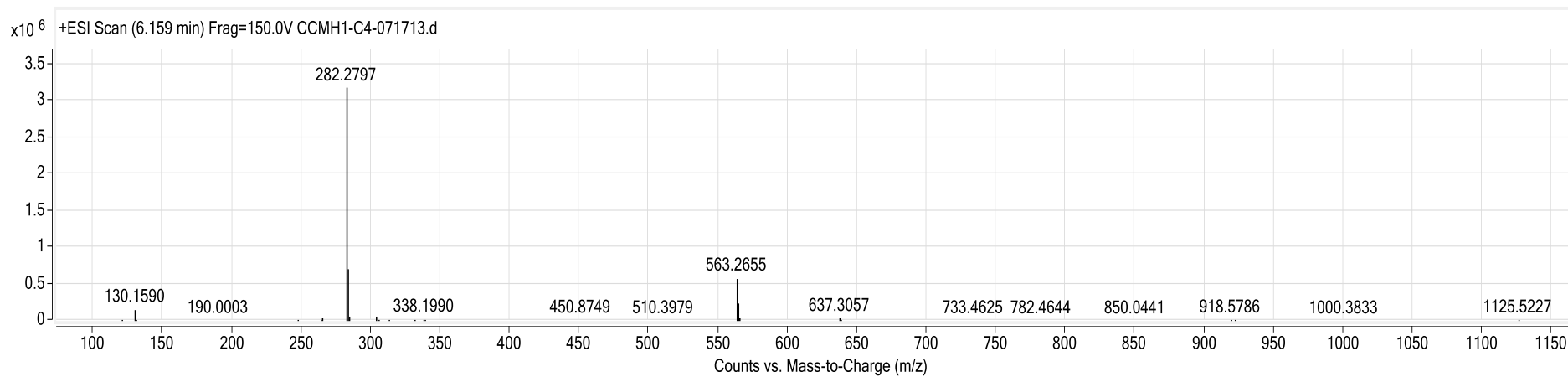
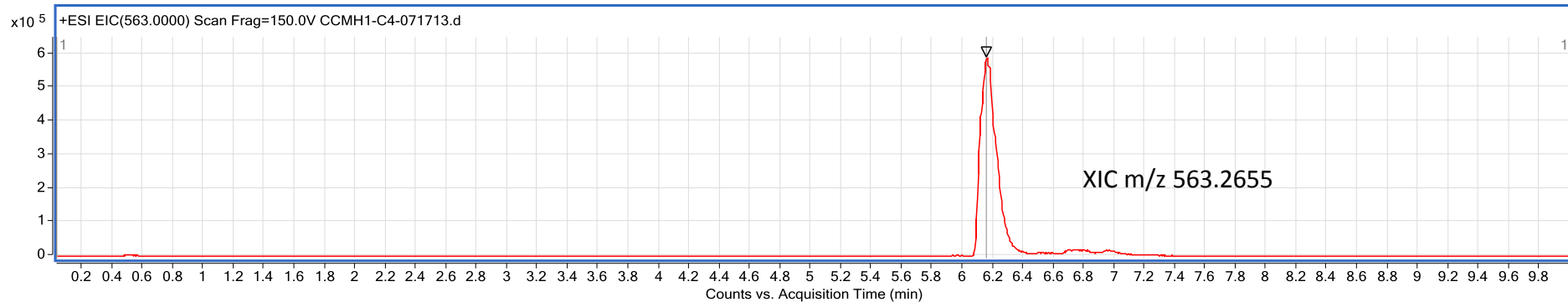
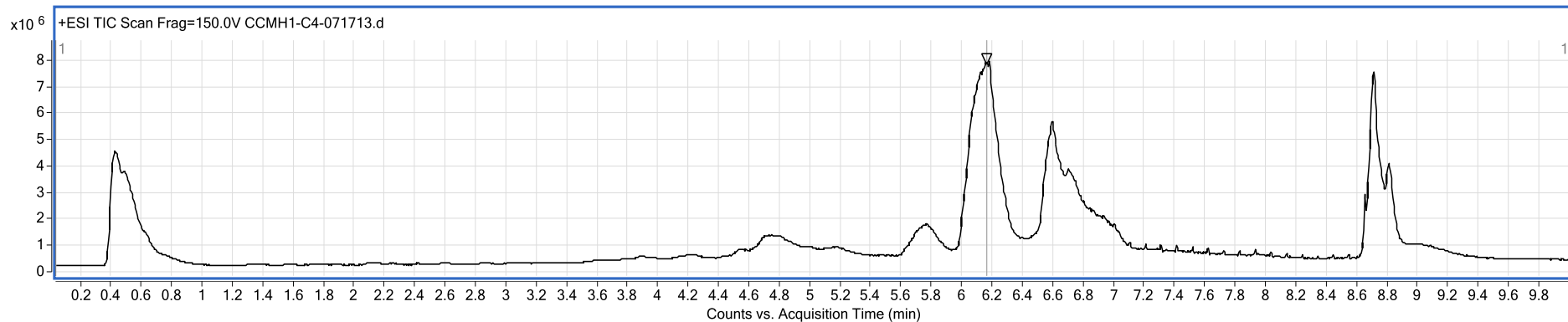
Japanese Quail (at 583)



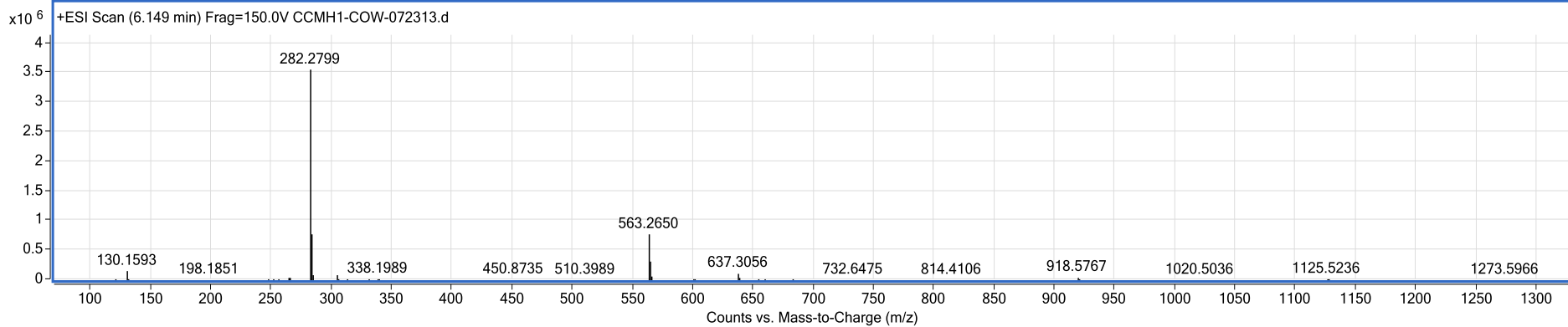
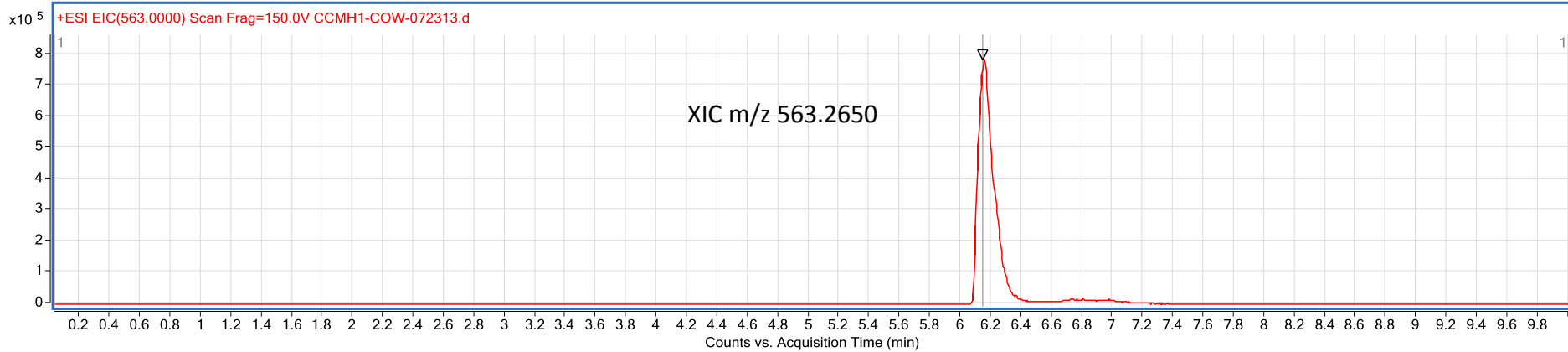
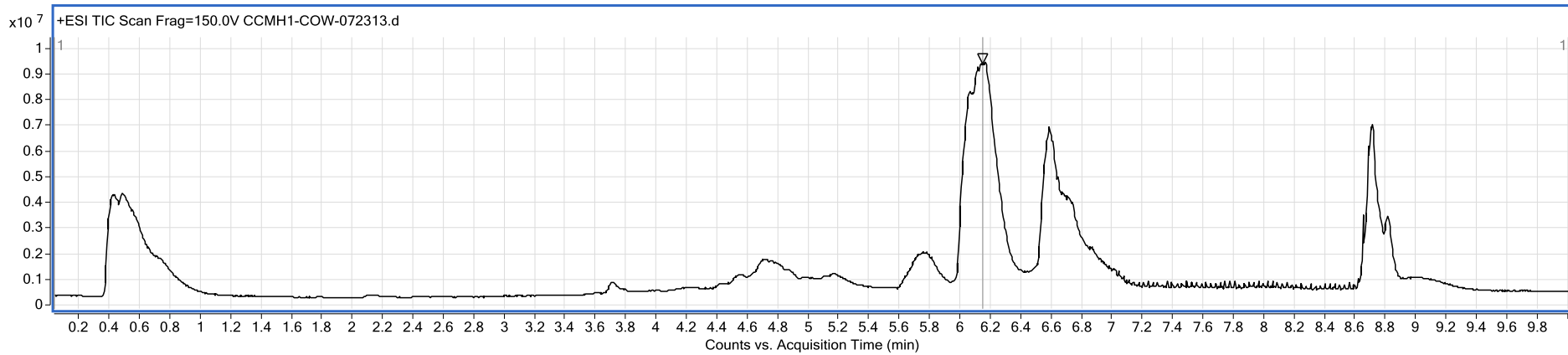
Japanese quail (at 563)



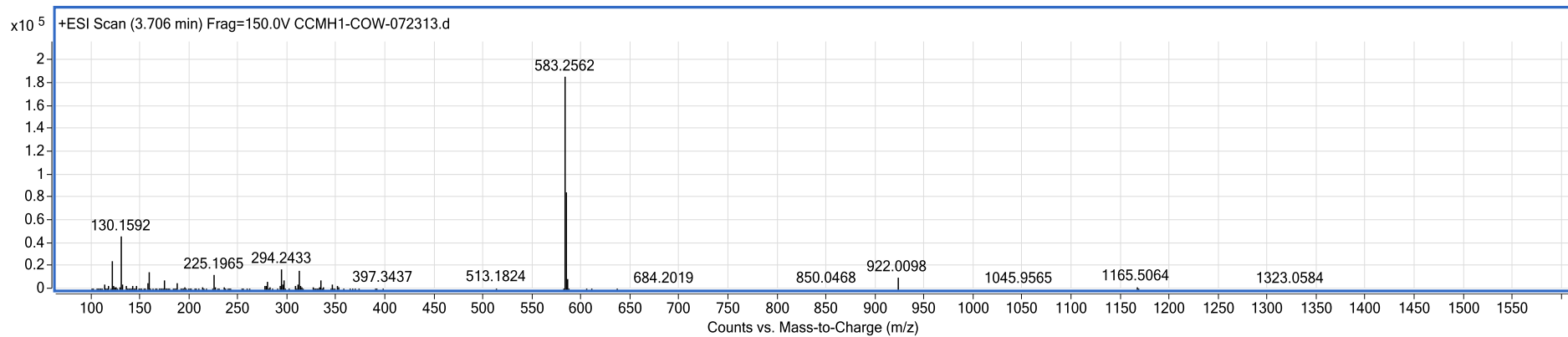
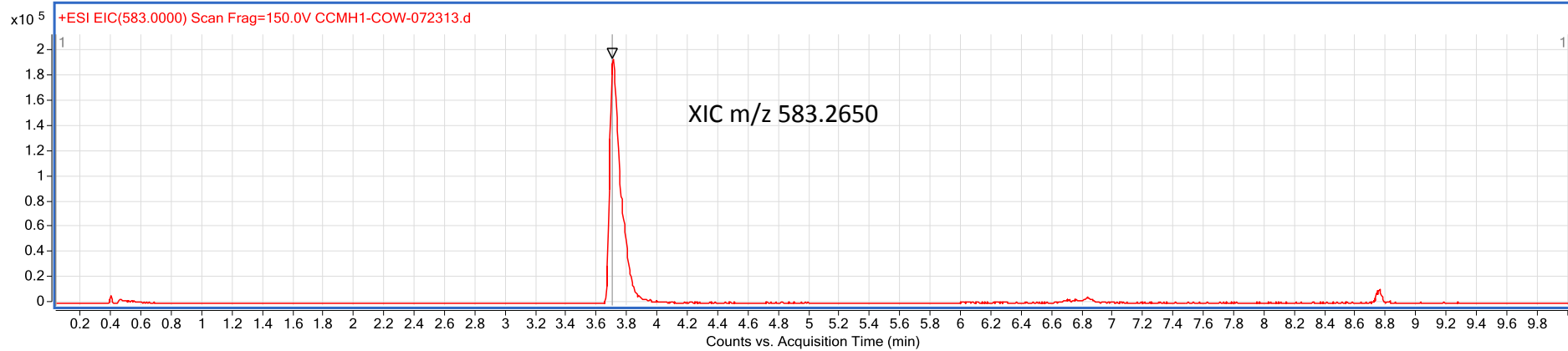
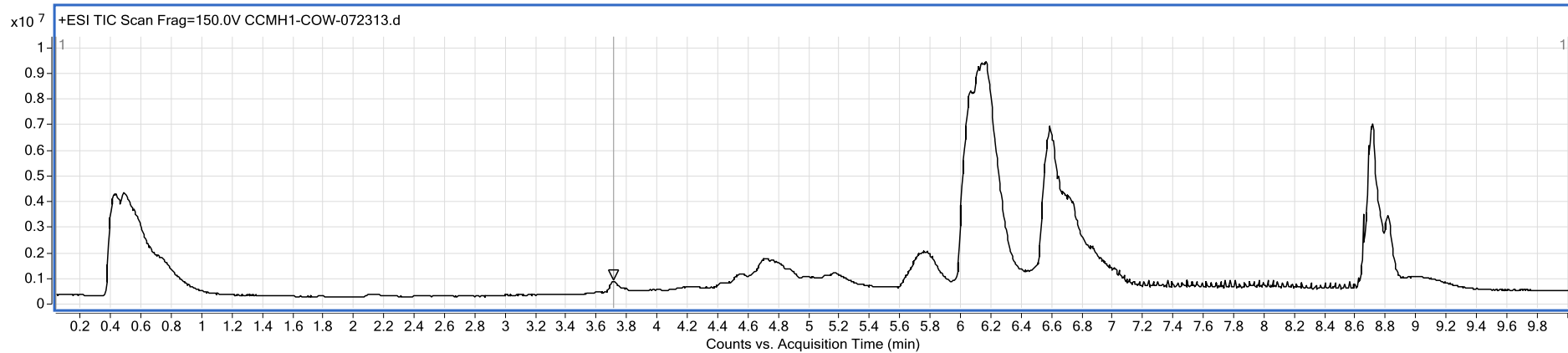
Domesticated chicken (at 563)



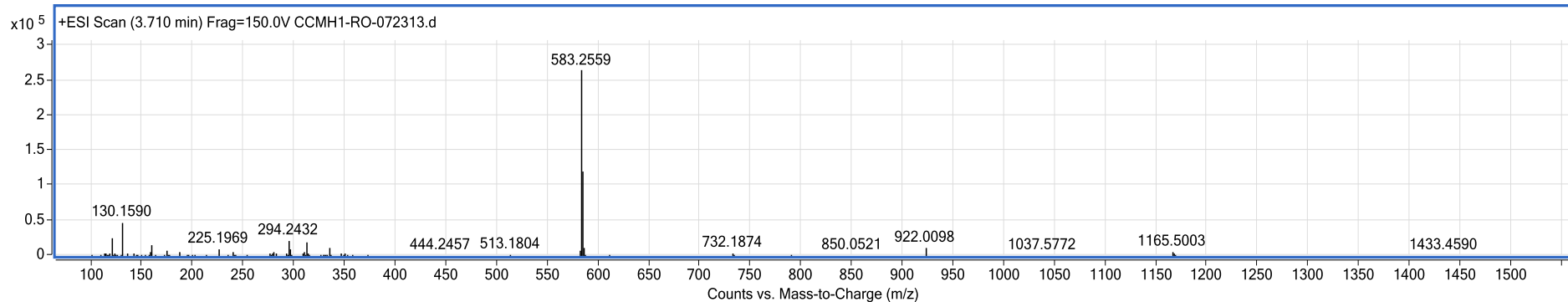
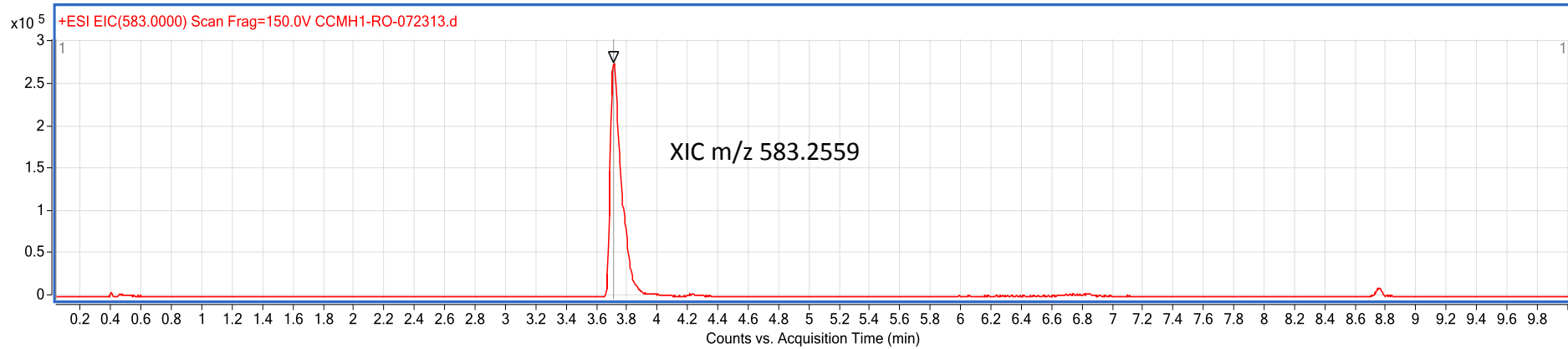
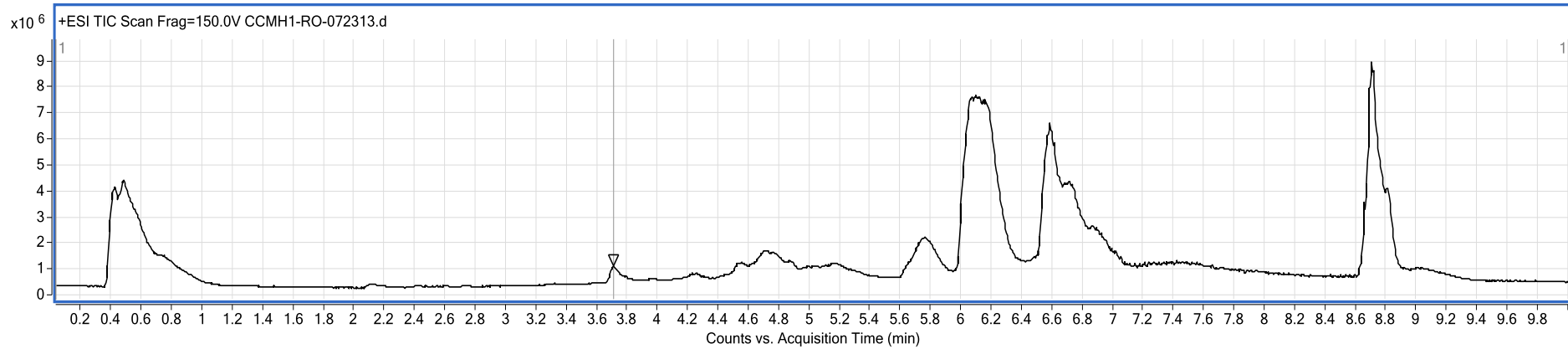
Brown-headed cowbird (at 563)



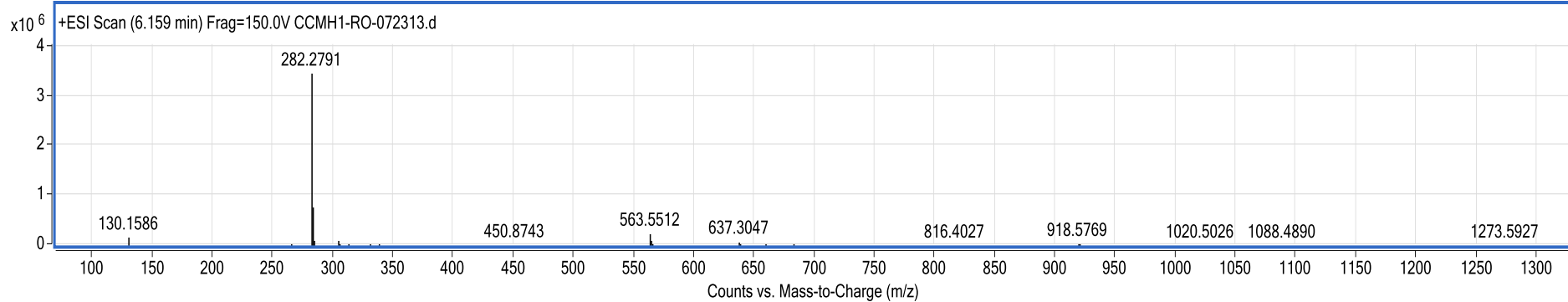
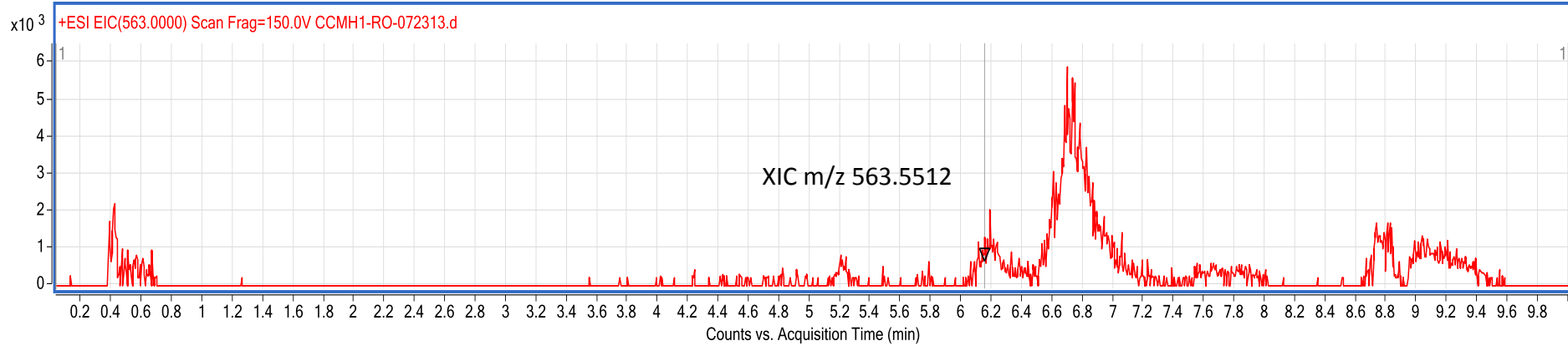
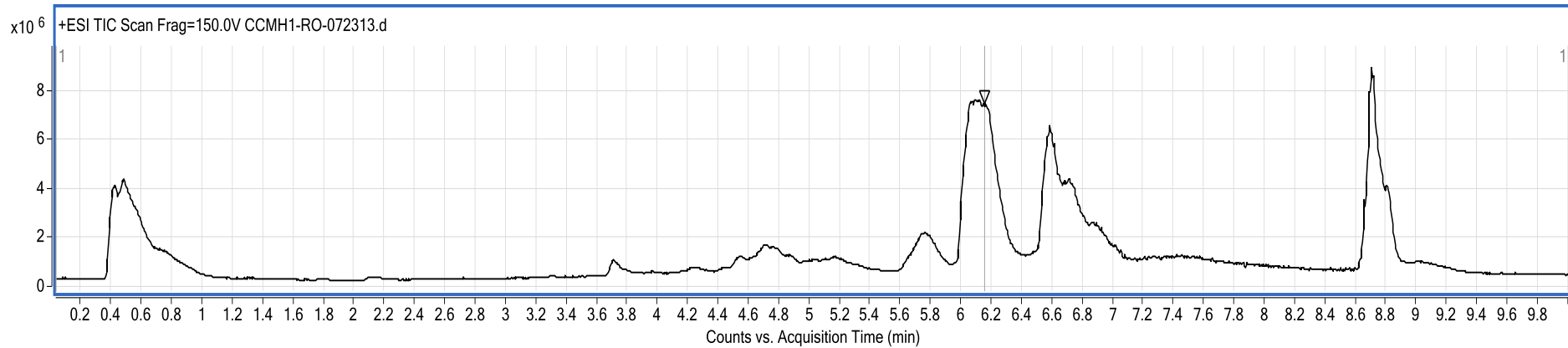
Brown-headed cowbird (at 583)



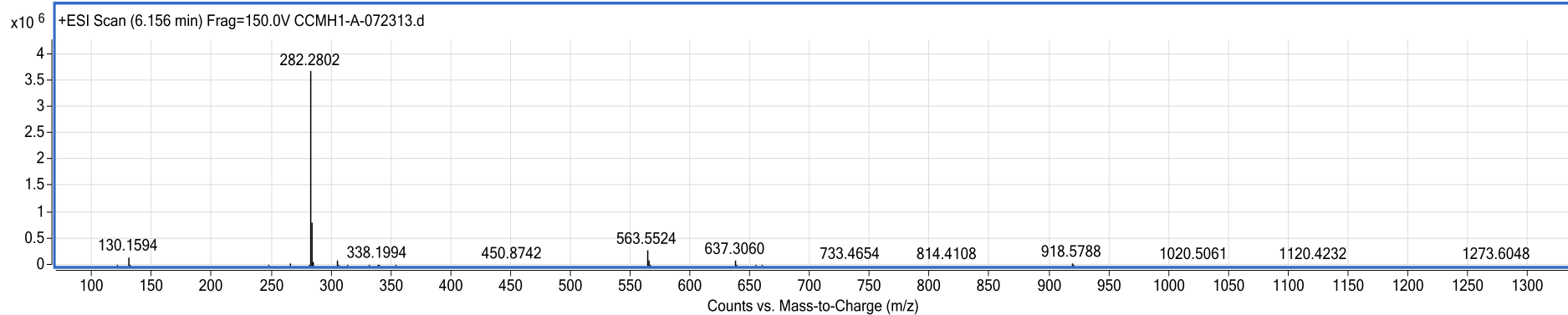
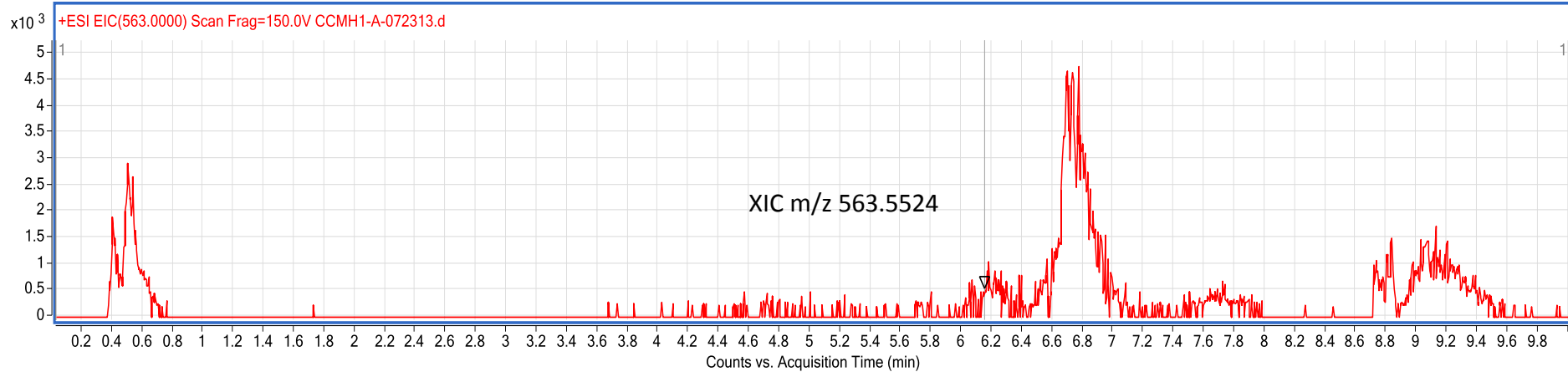
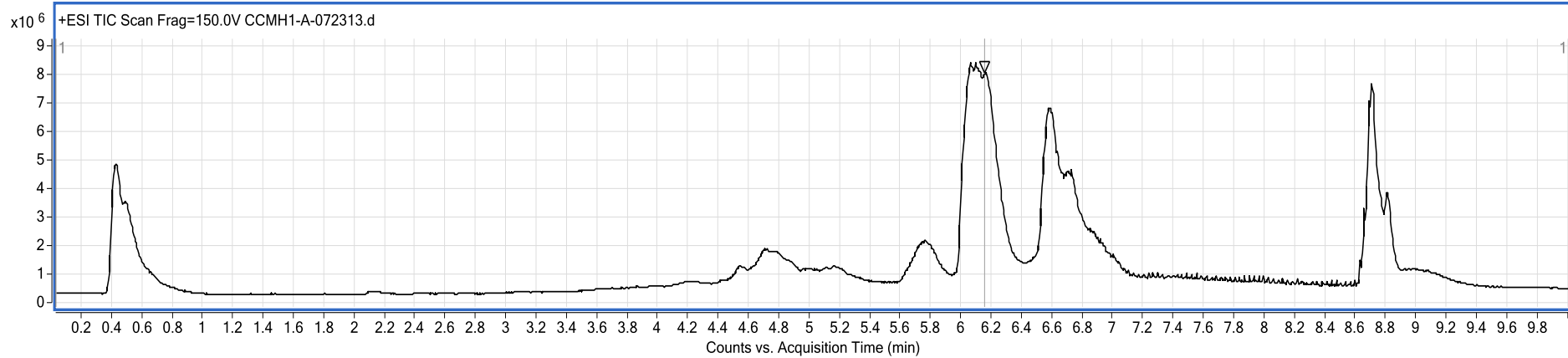
American Robin (at 583)



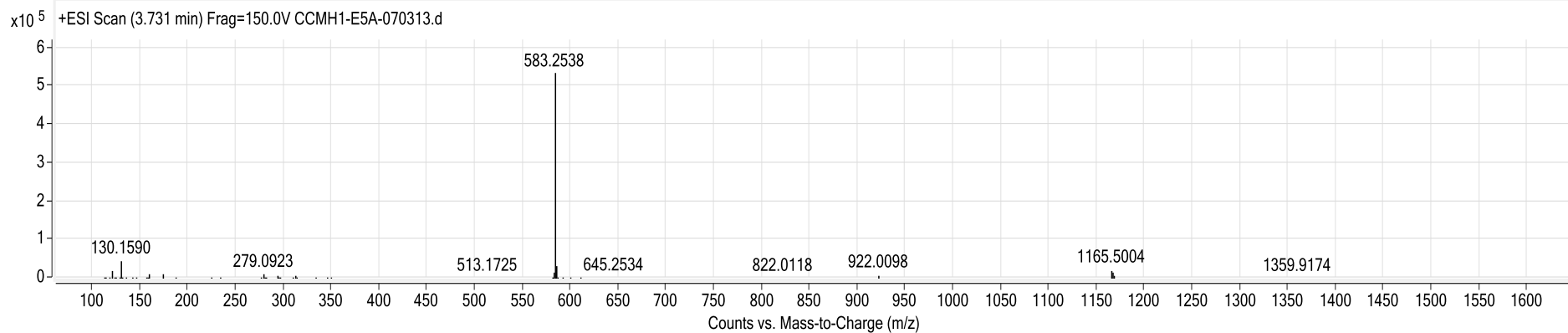
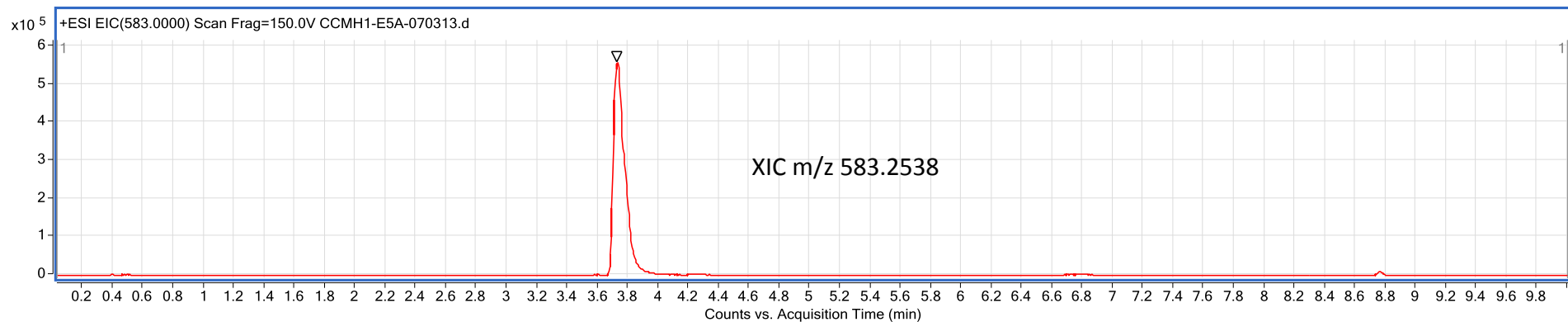
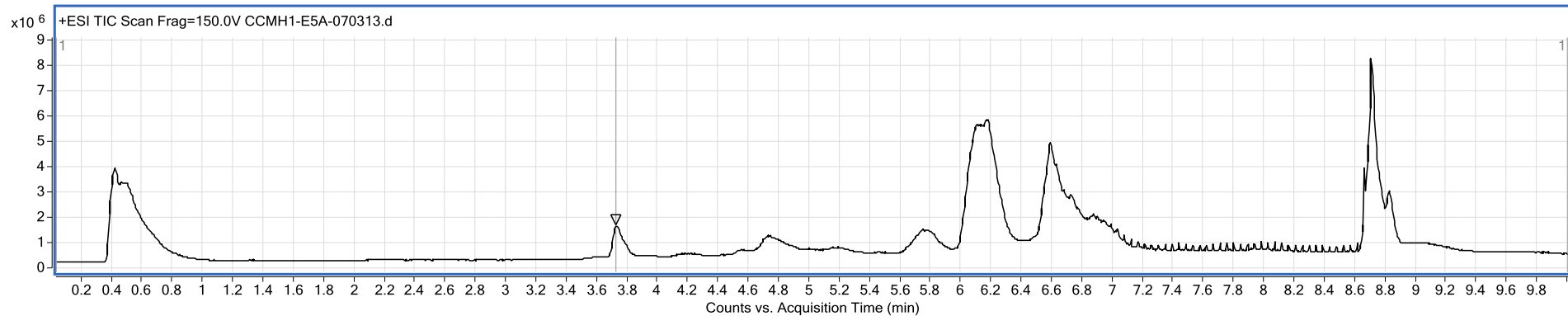
American robin (at 563)



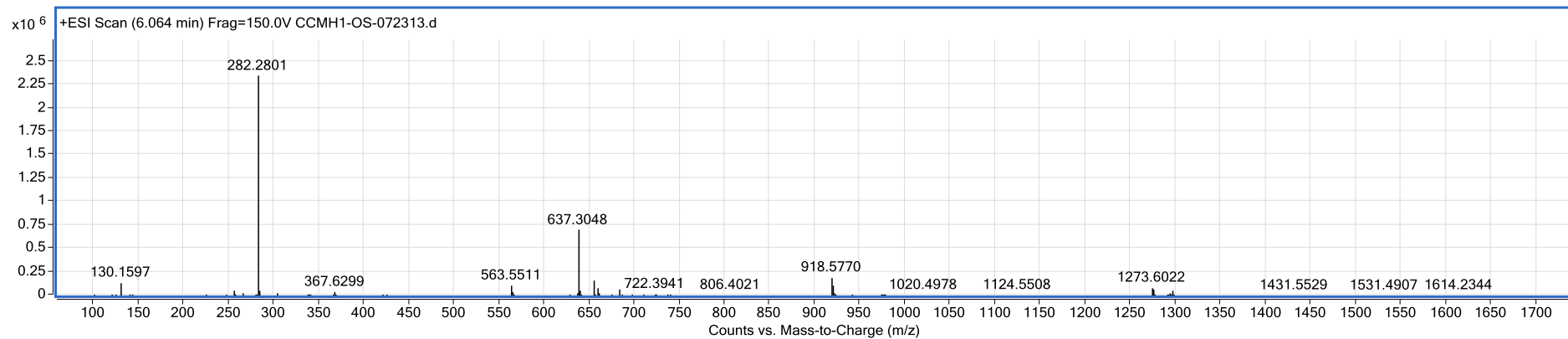
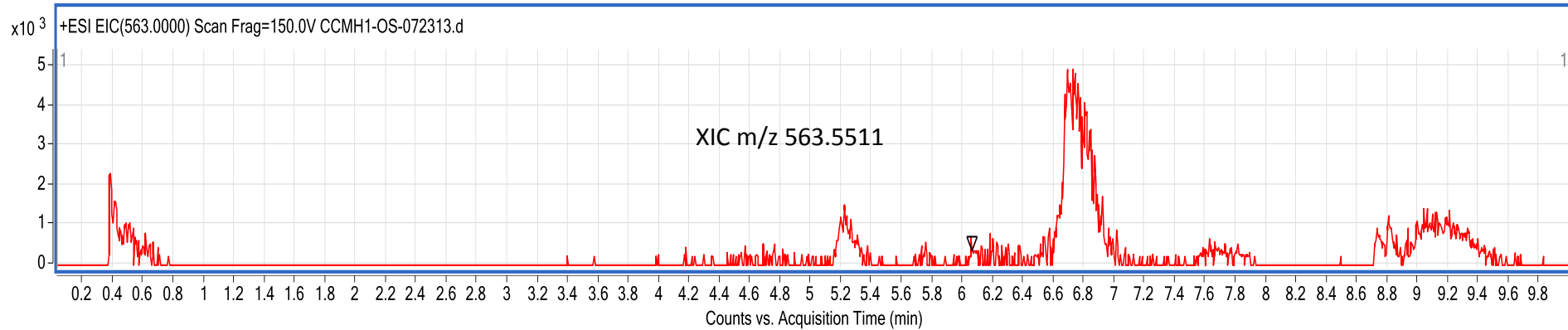
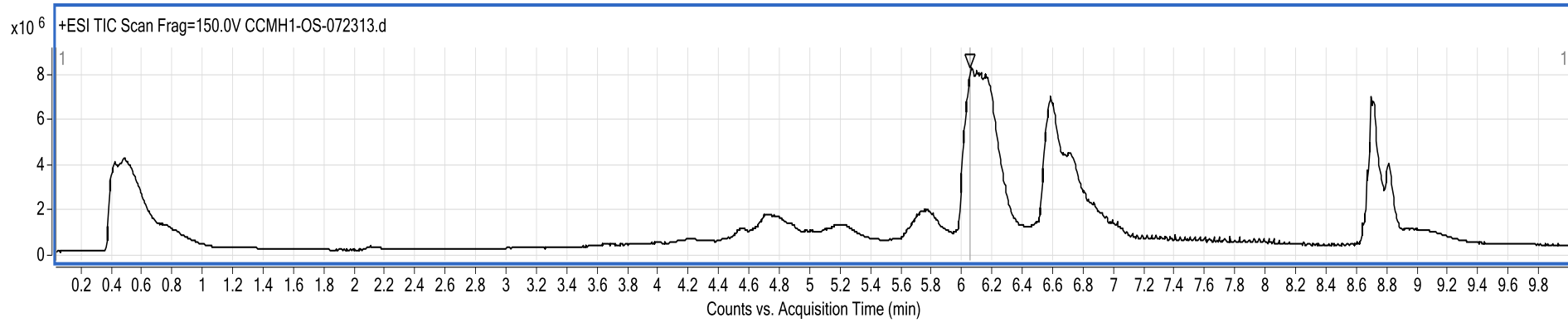
American alligator (at 563)



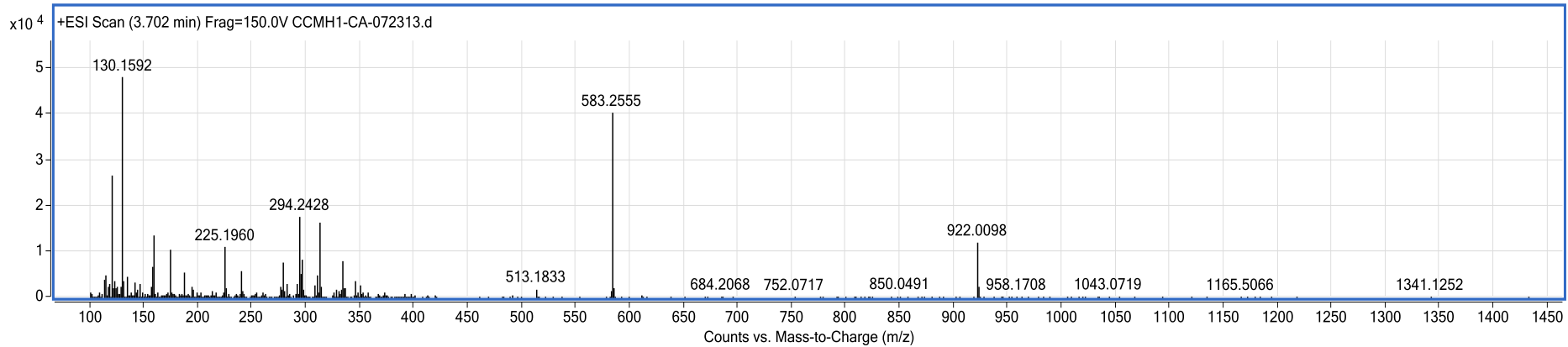
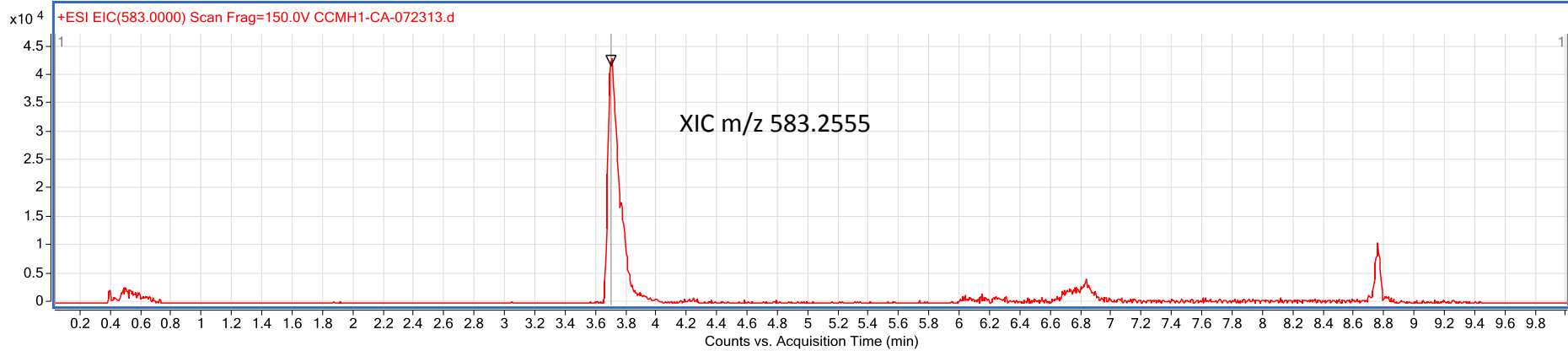
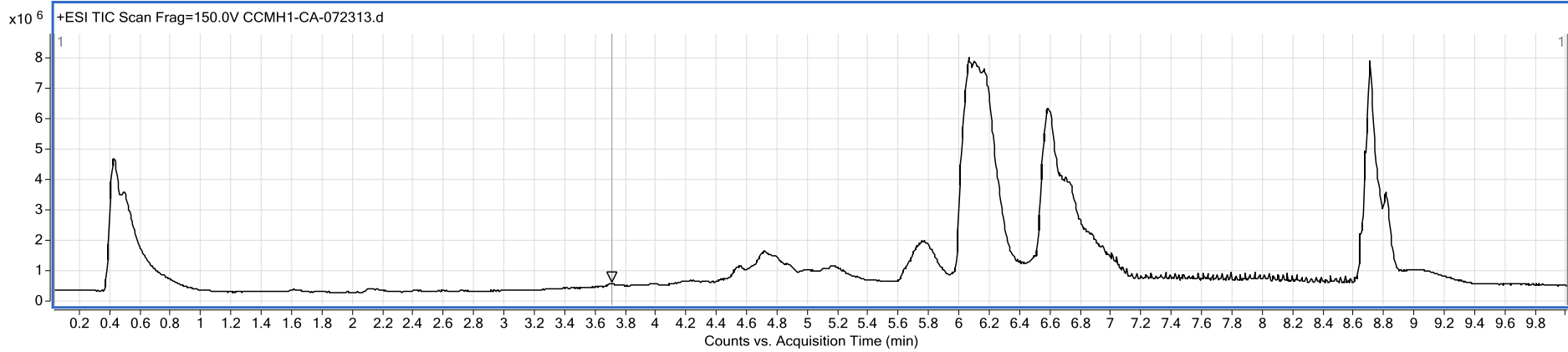
Emu (at 583)



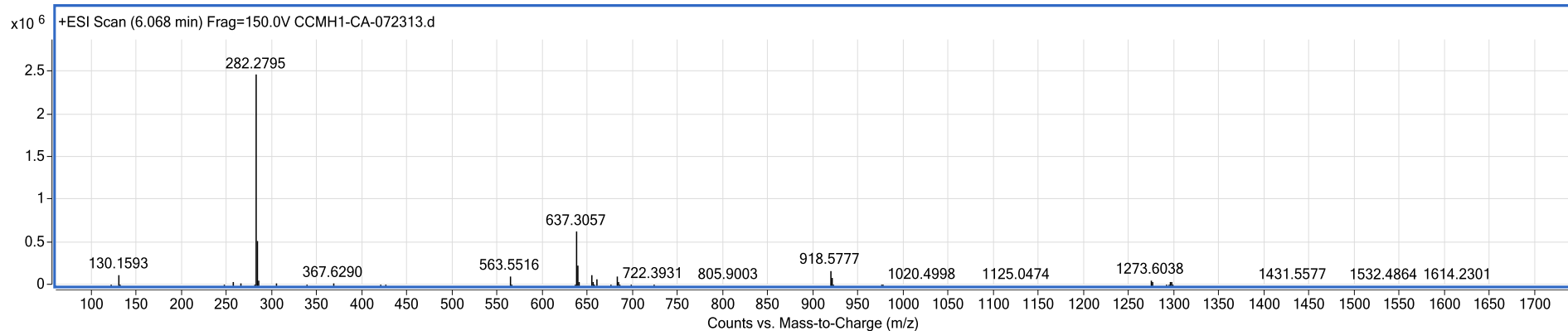
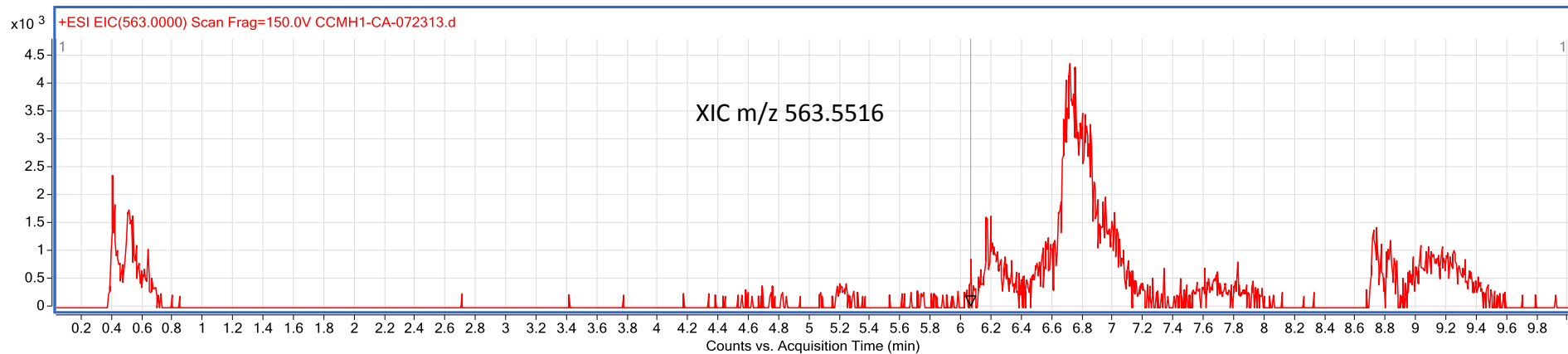
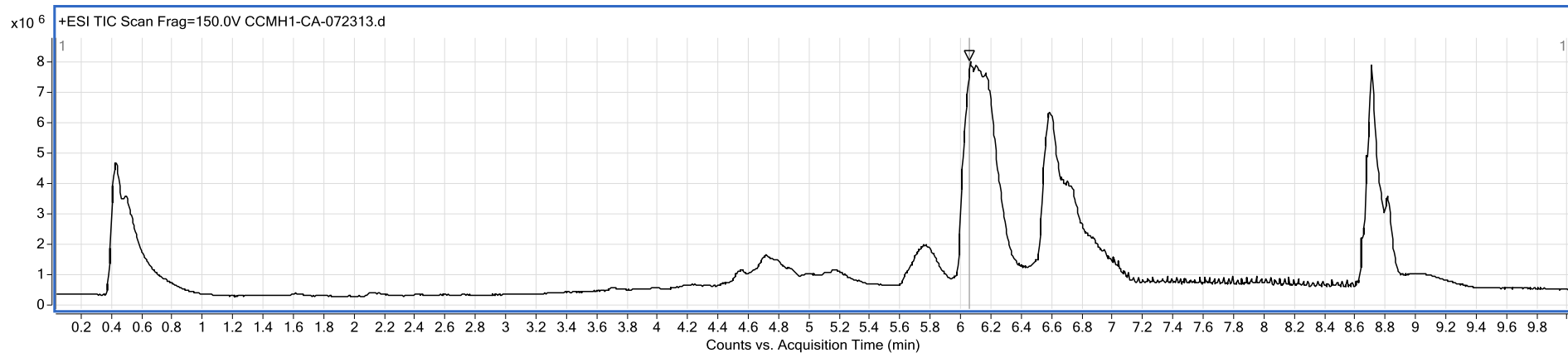
Ostrich (at 563)



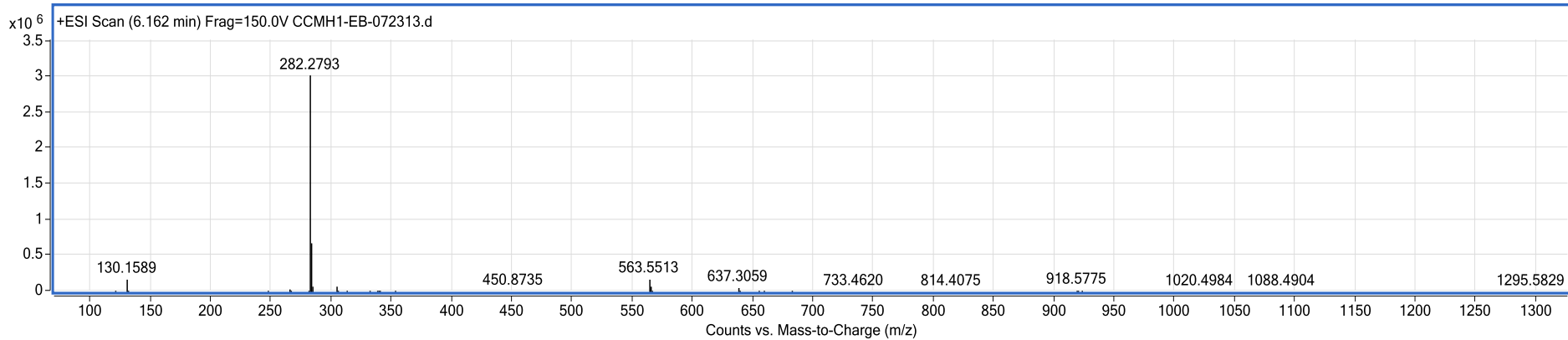
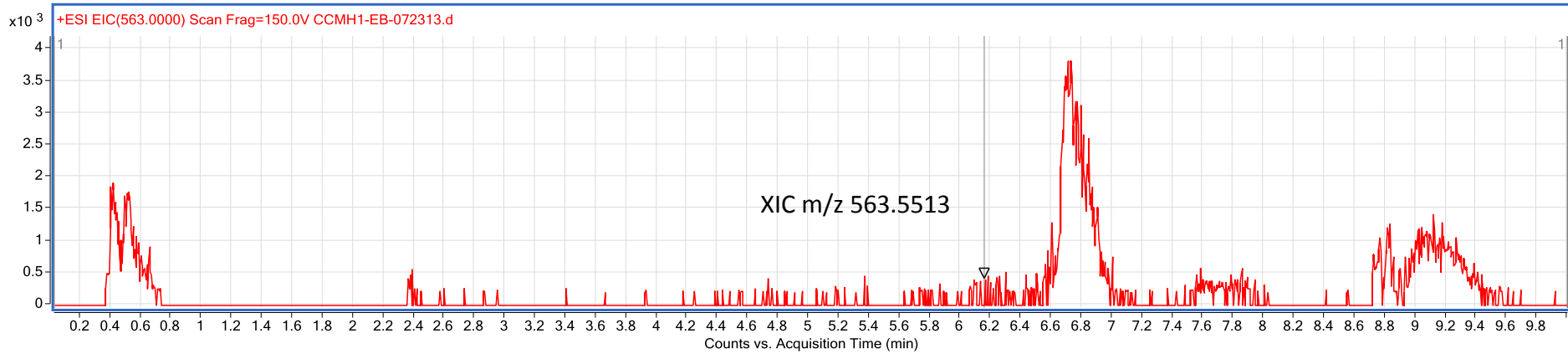
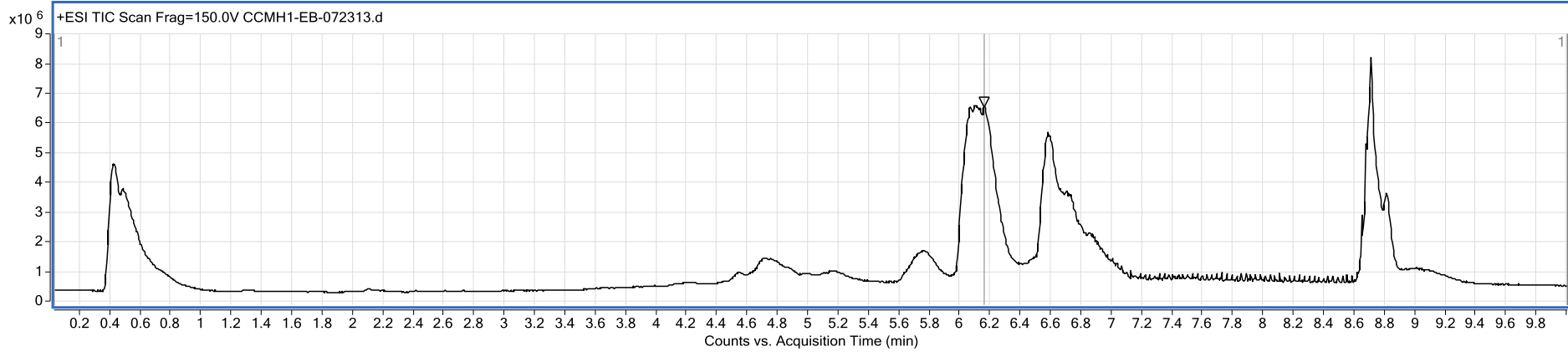
Southern cassowary (at 583)



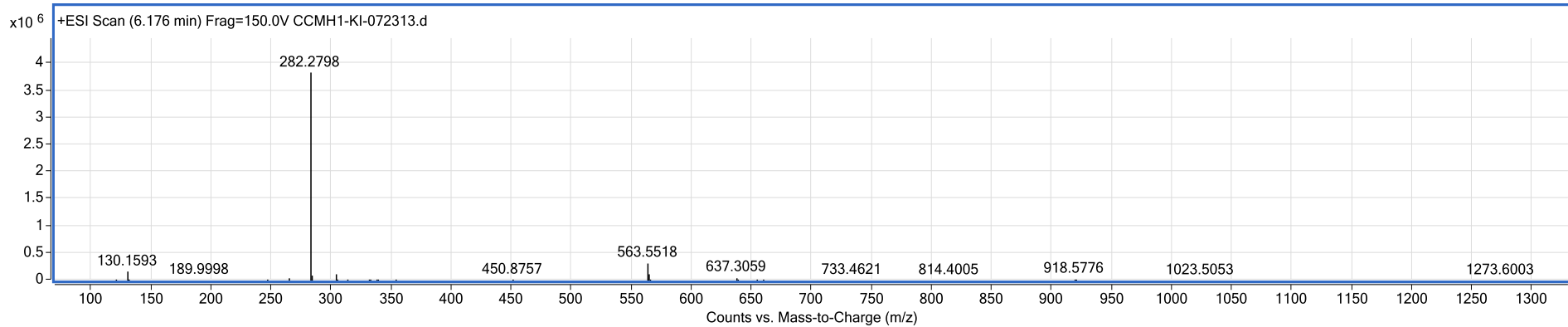
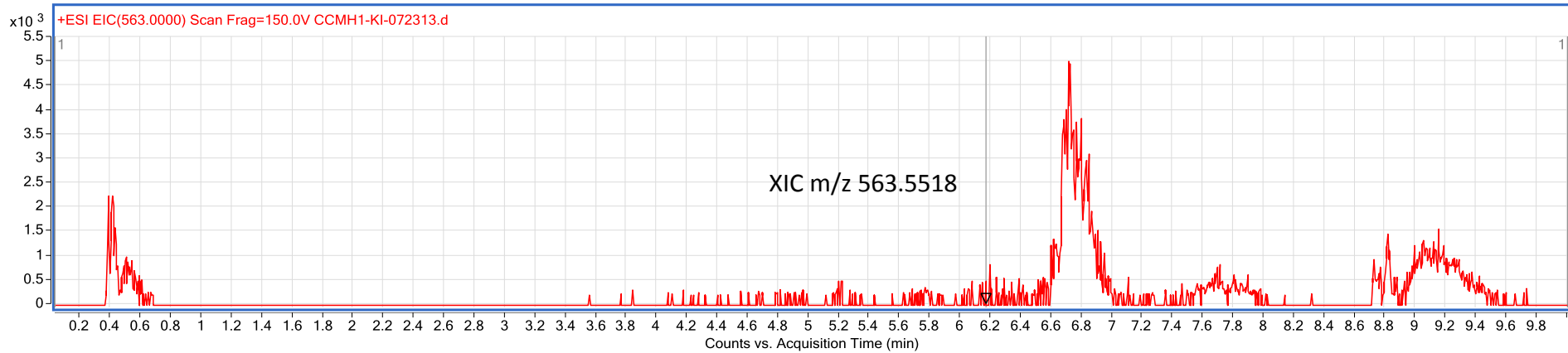
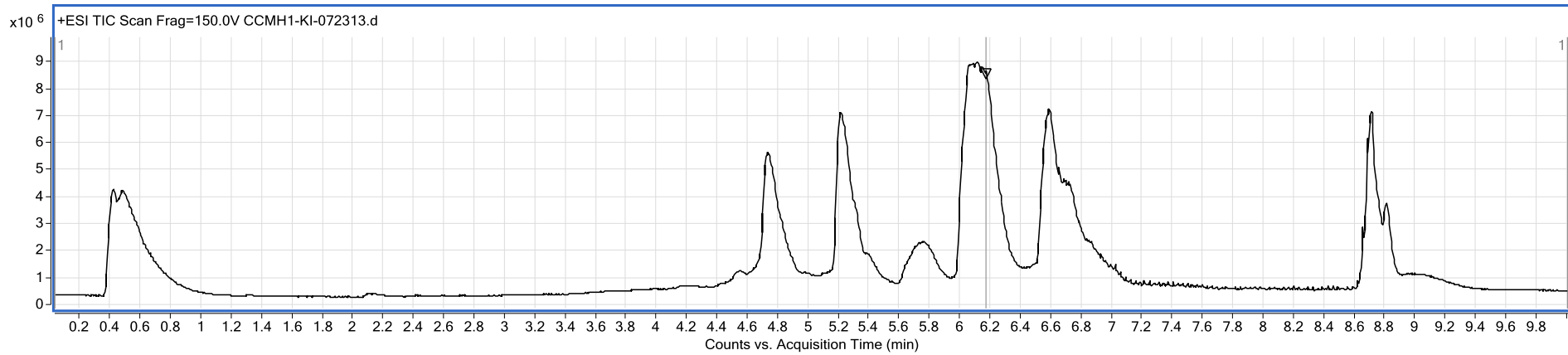
Southern cassowary (at 563)



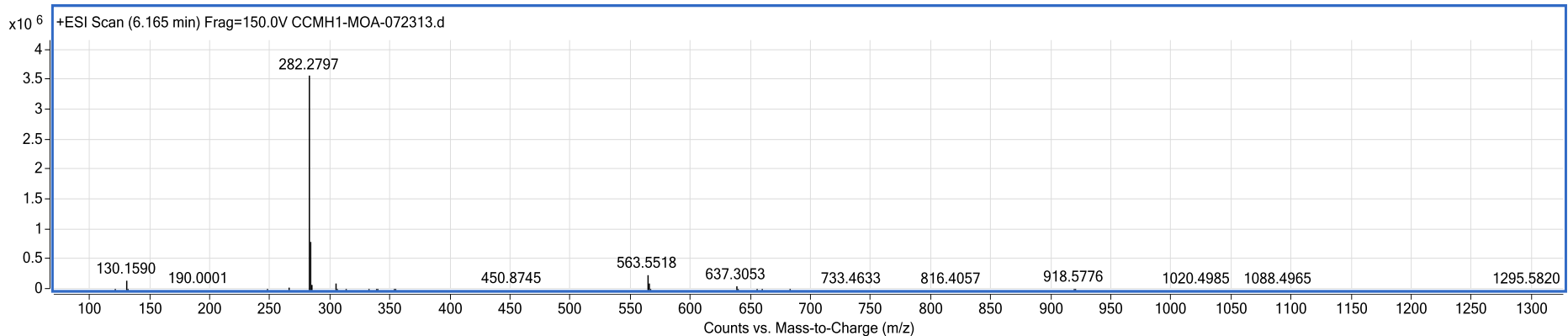
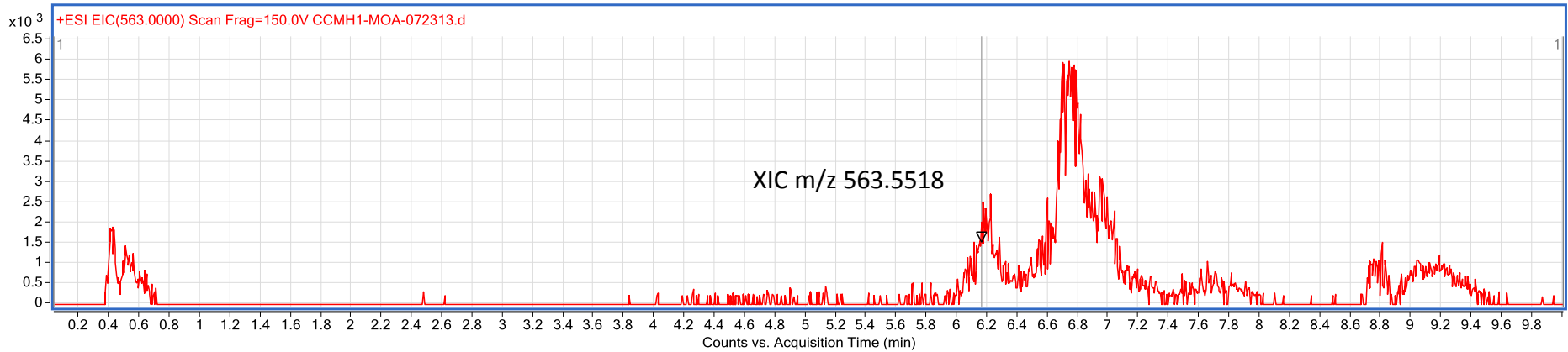
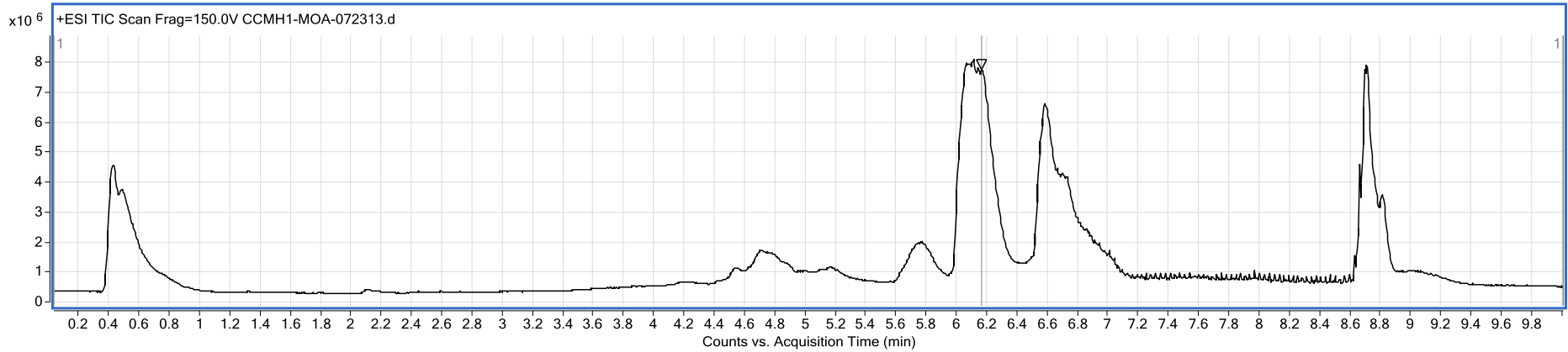
Elephant bird (at 563)



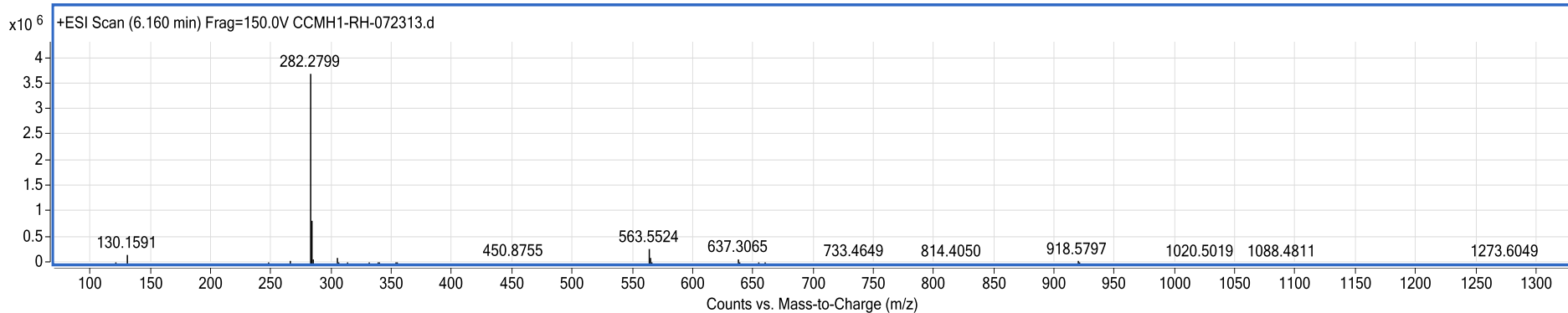
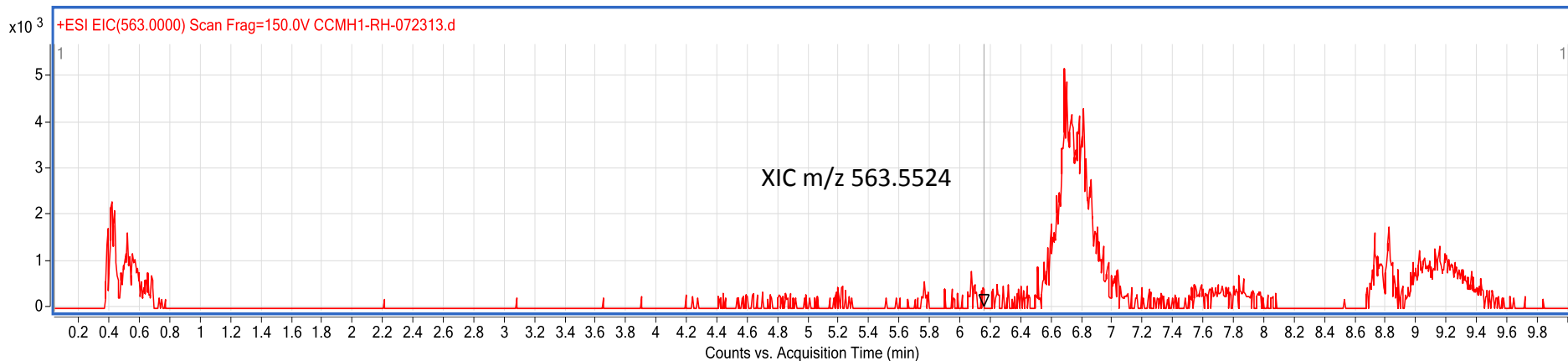
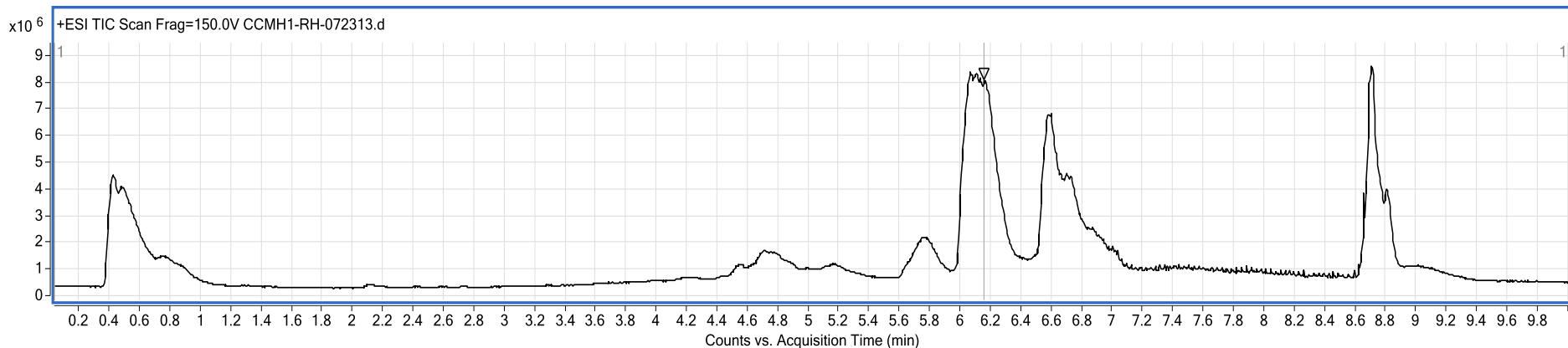
North Island brown kiwi (at 563)



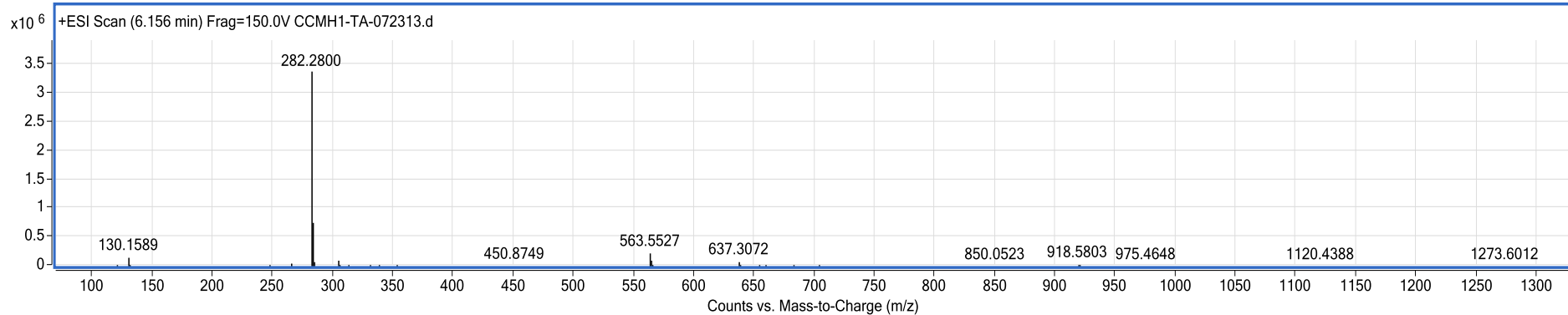
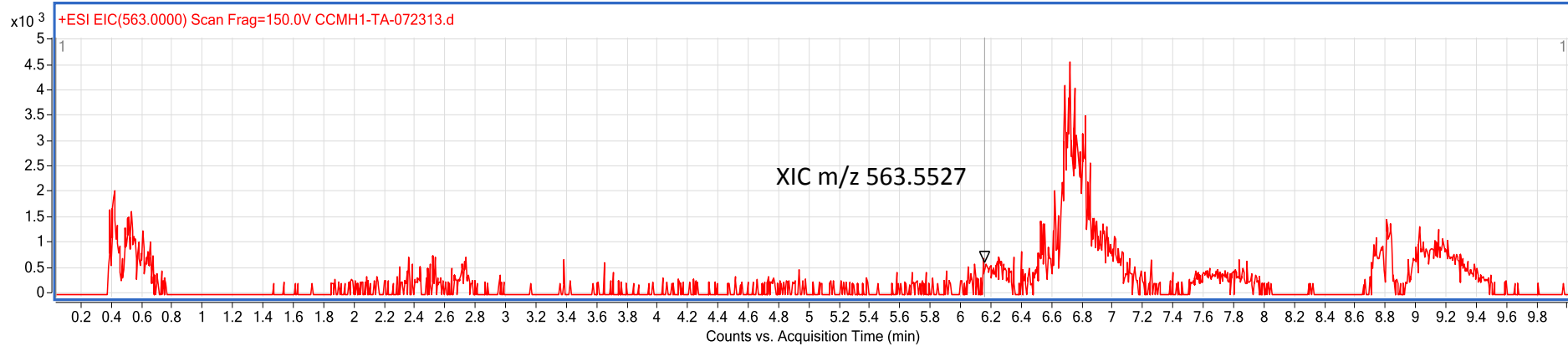
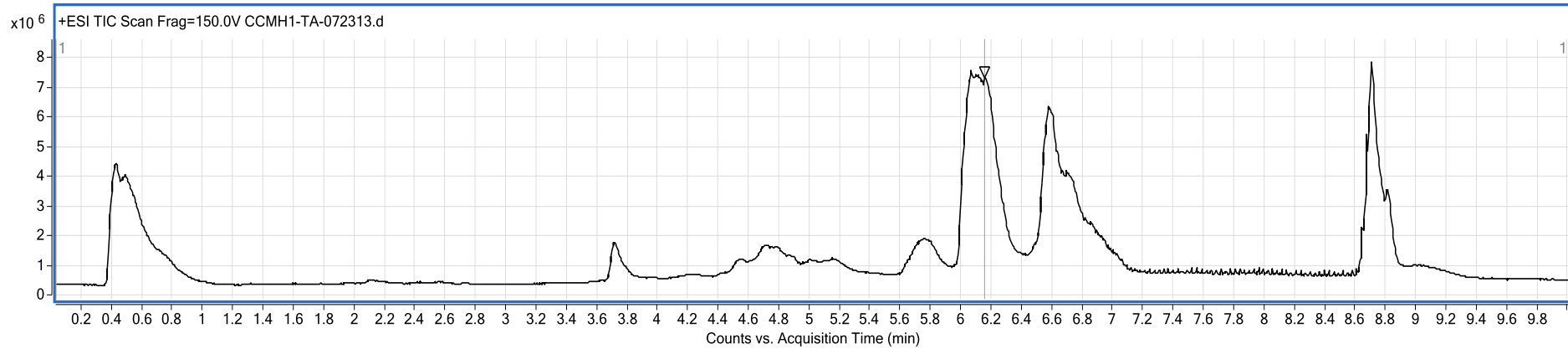
Moa (at 563)



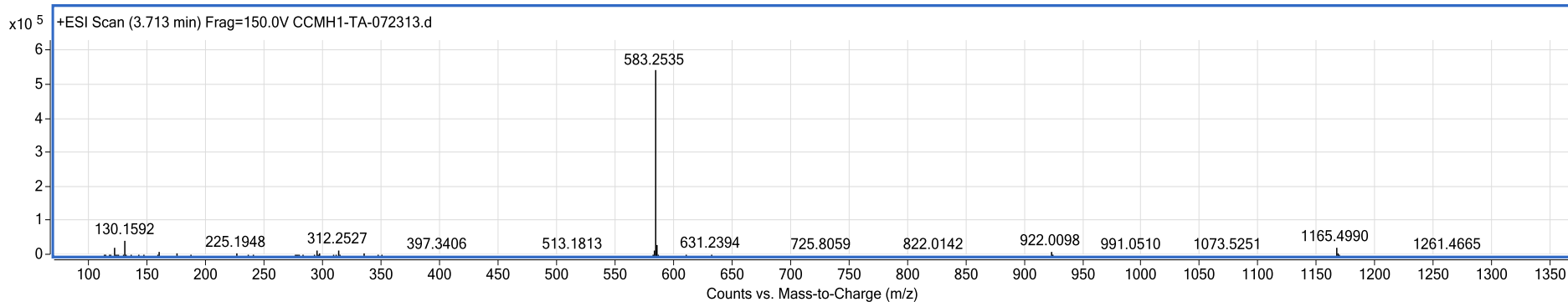
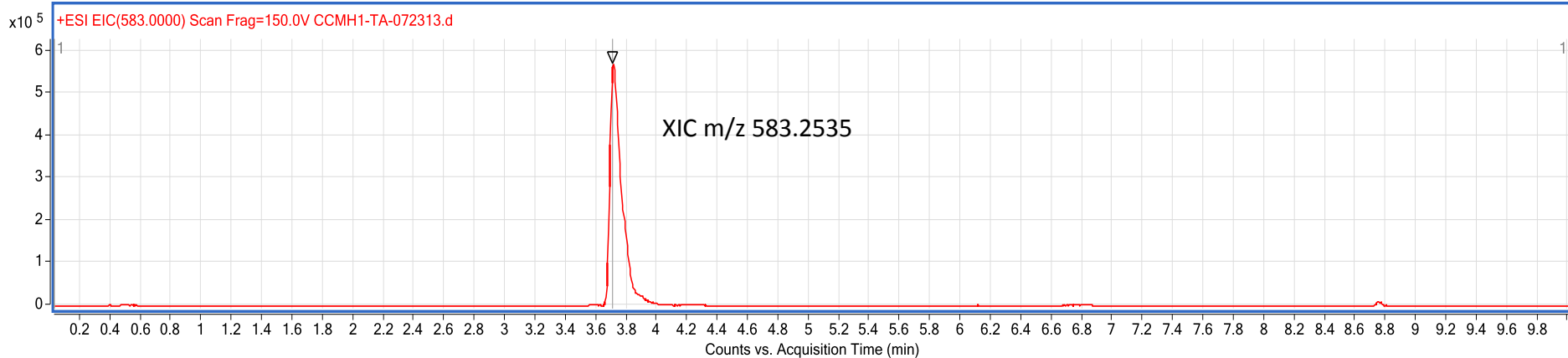
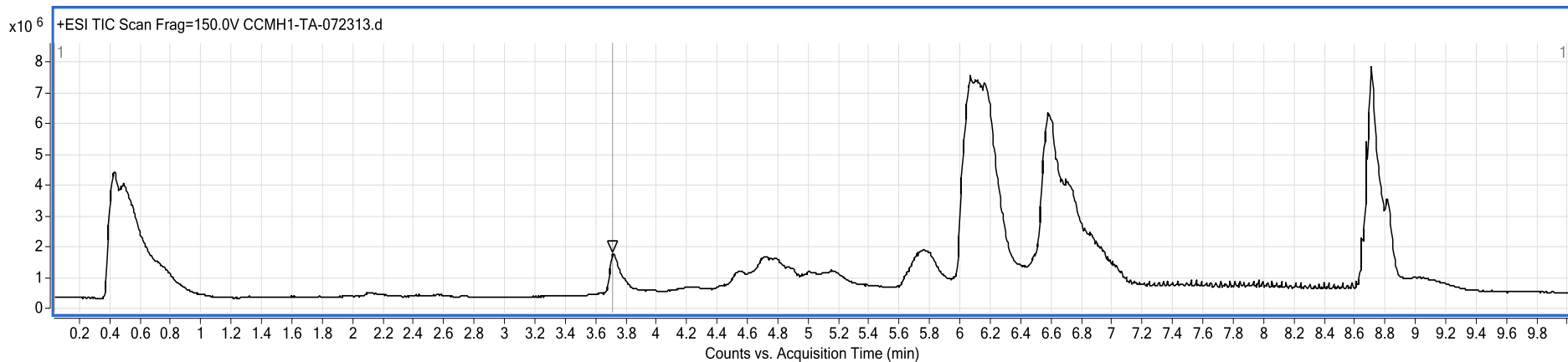
Greater rhea (at 563)



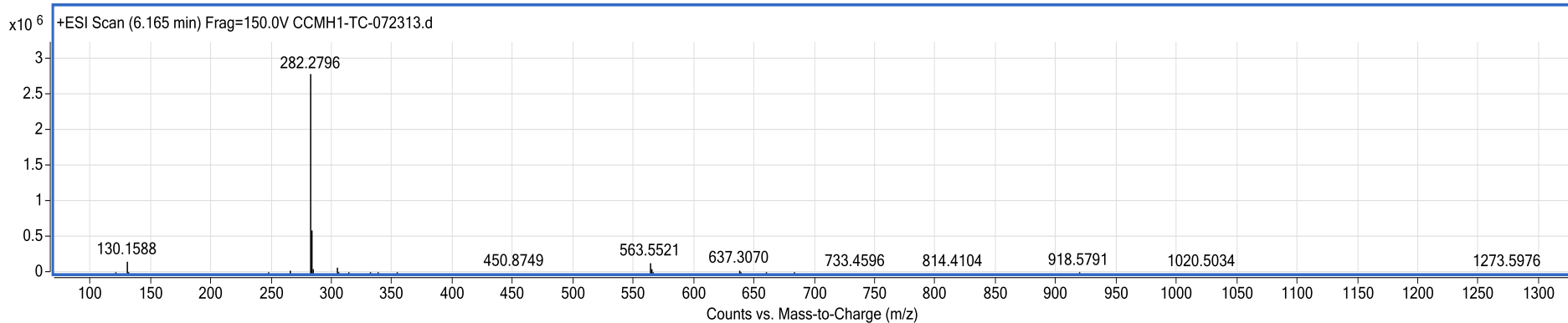
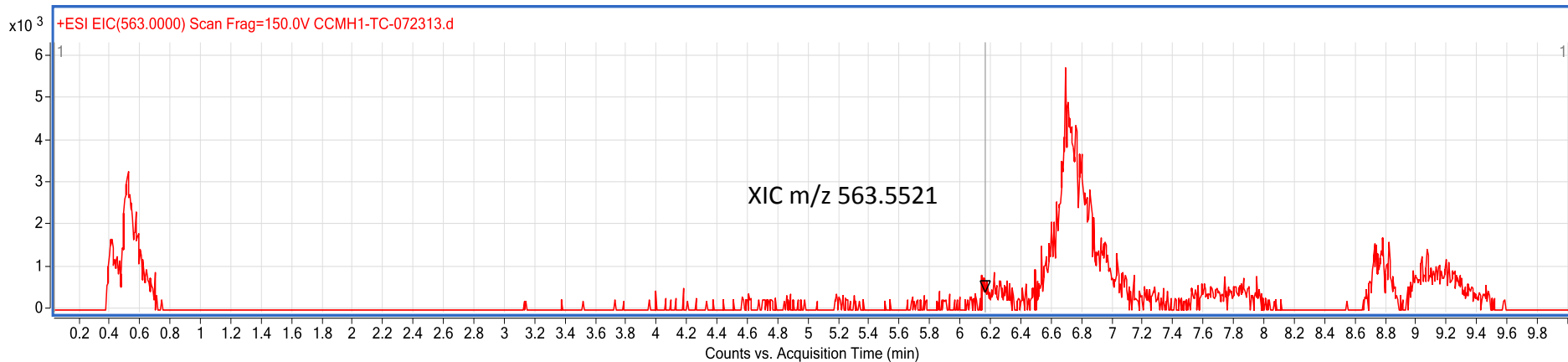
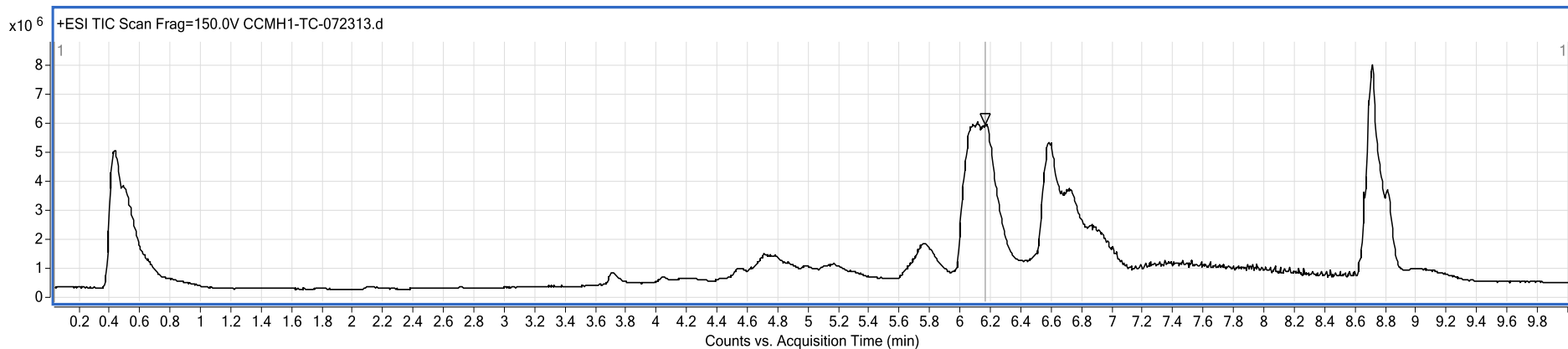
Chilean tinamou (at 563)



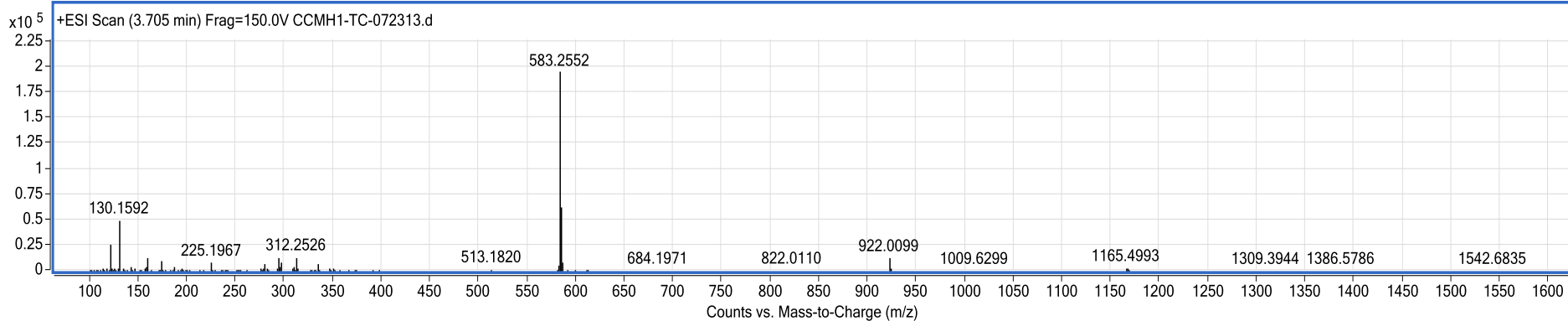
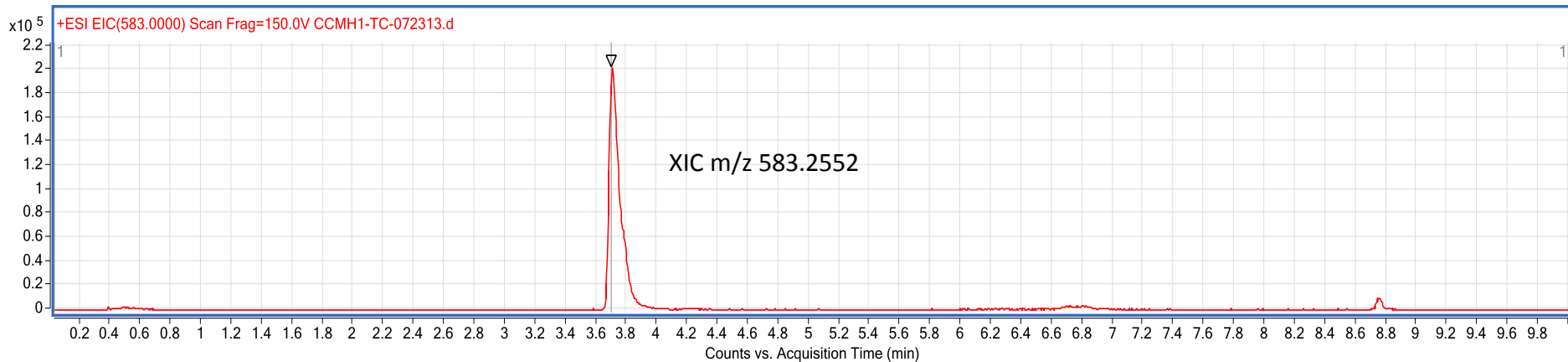
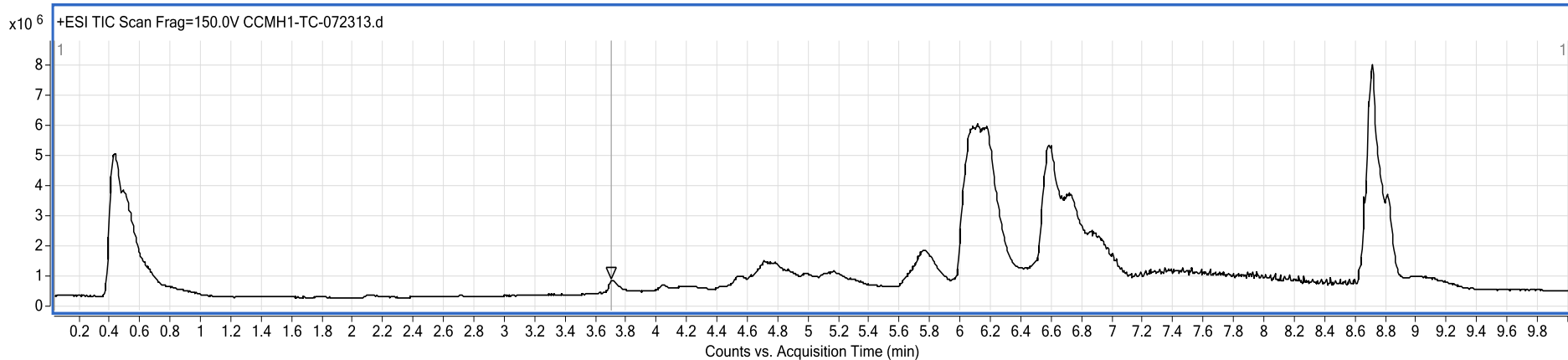
Chilean tinamou (at 583)



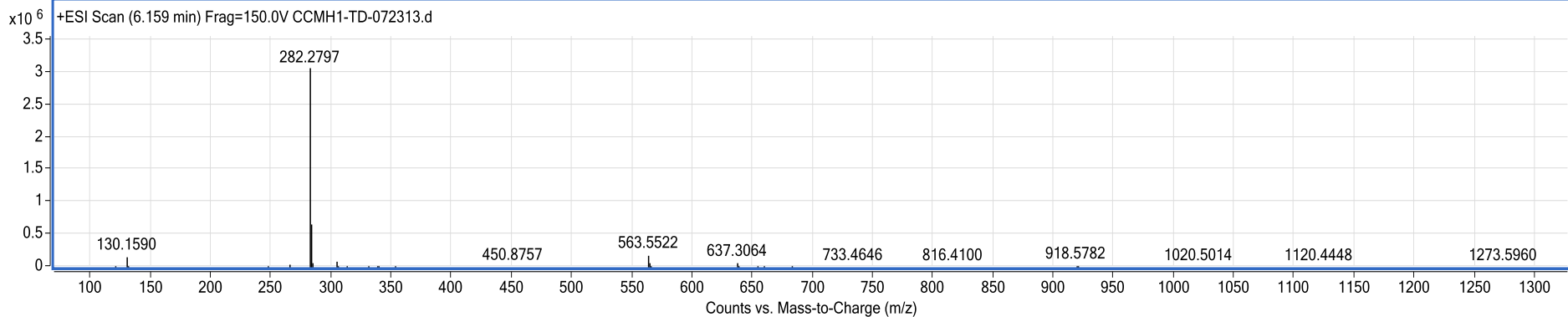
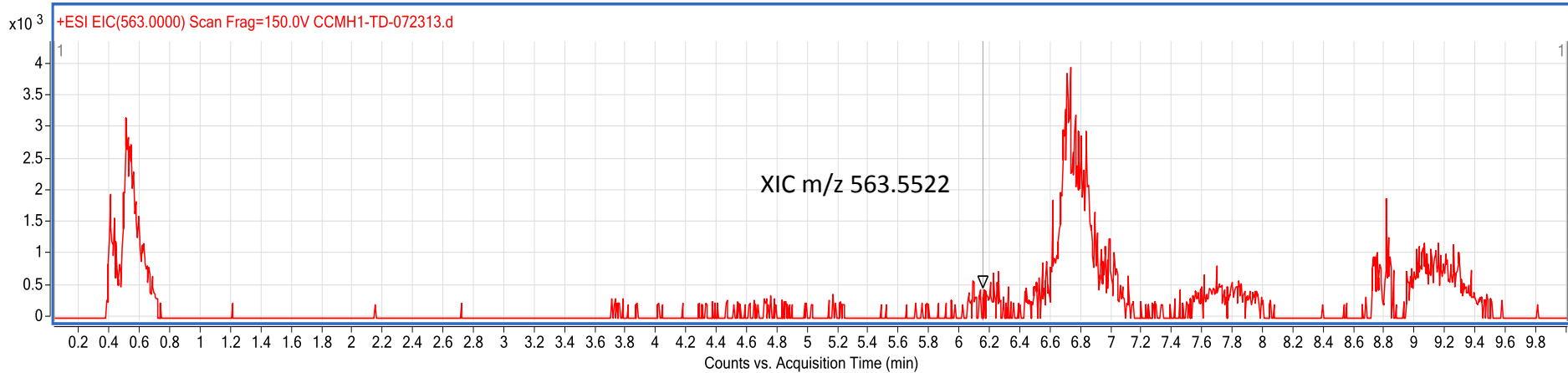
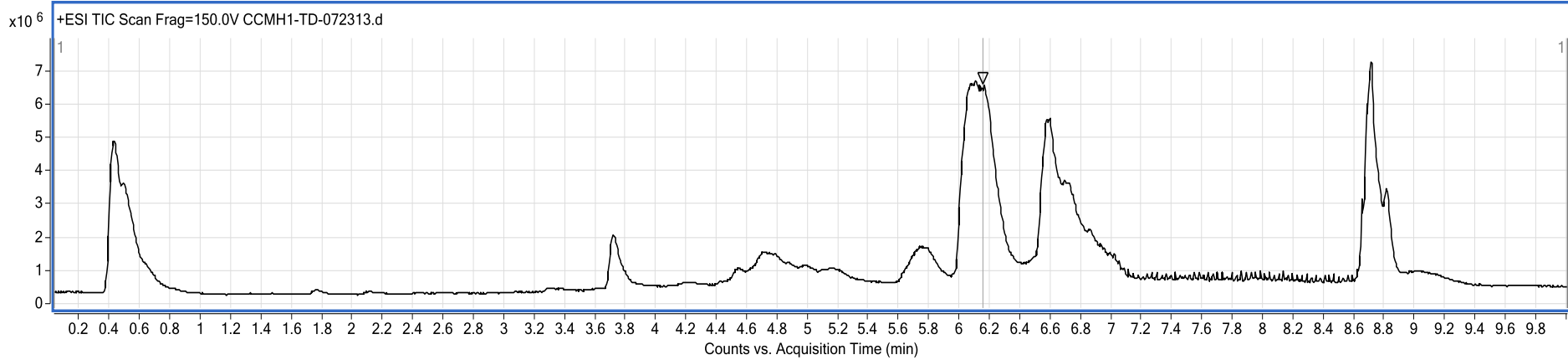
Great tinamou (at 563)



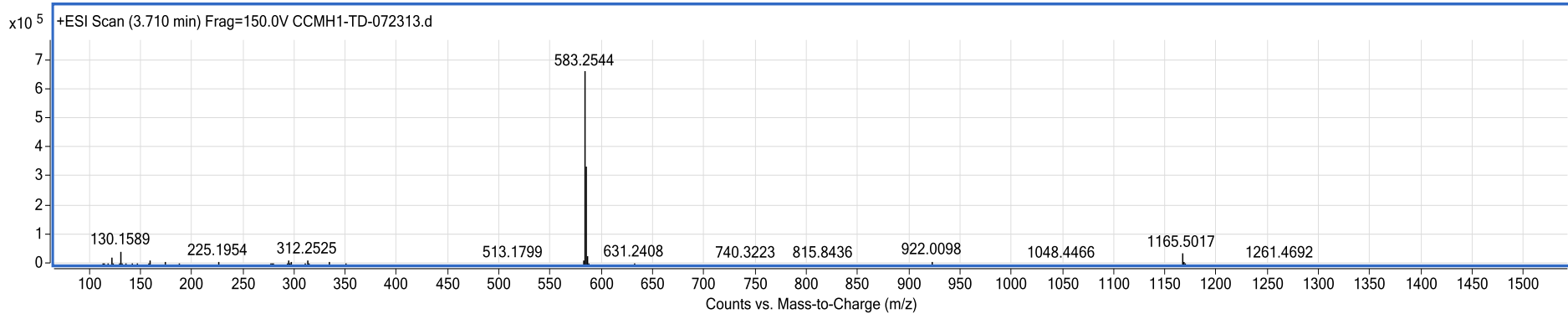
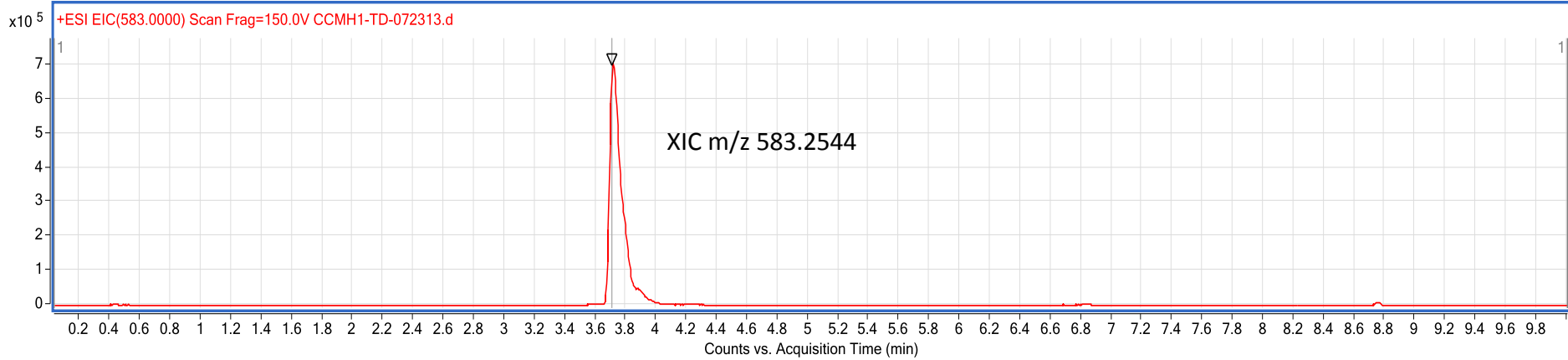
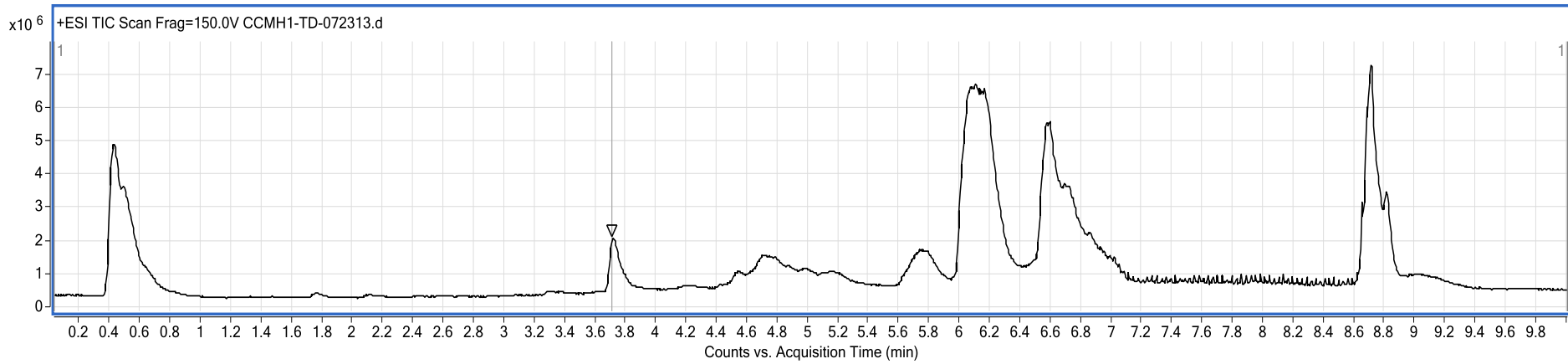
Great tinamou (at 583)



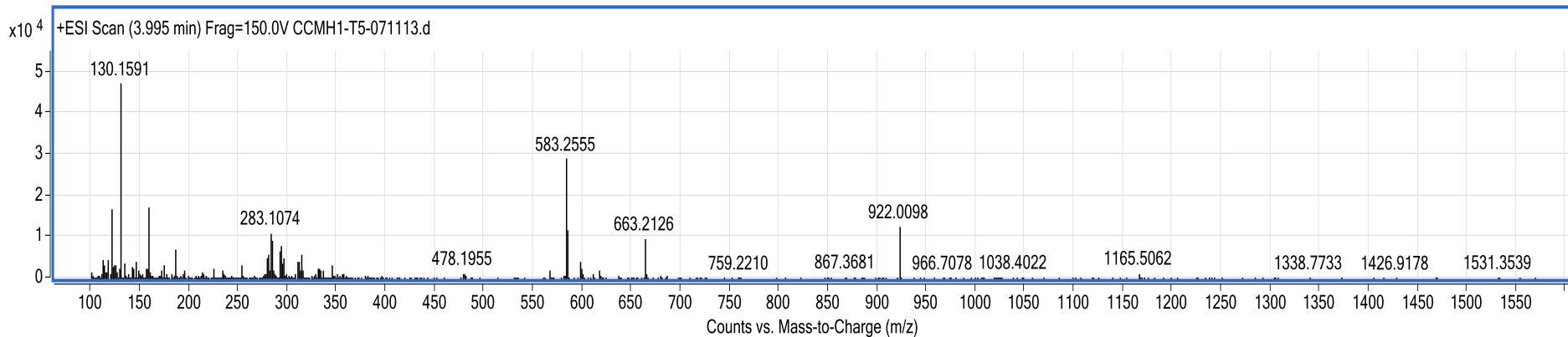
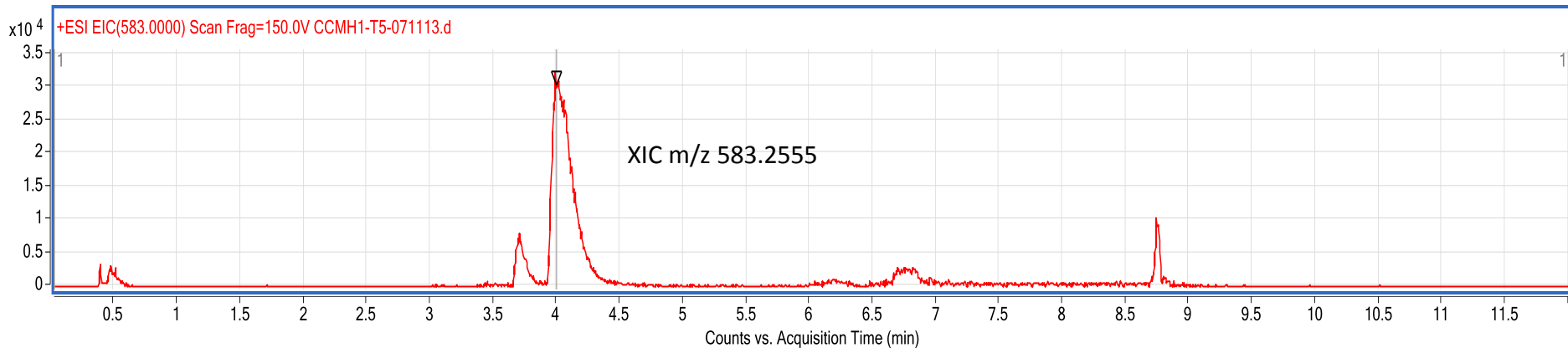
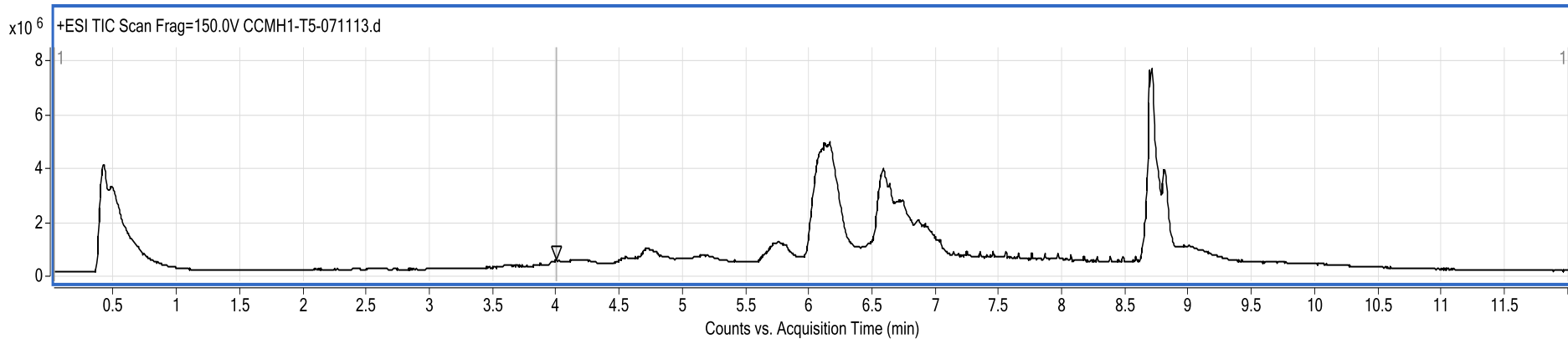
Spotted Nothura (at 563)



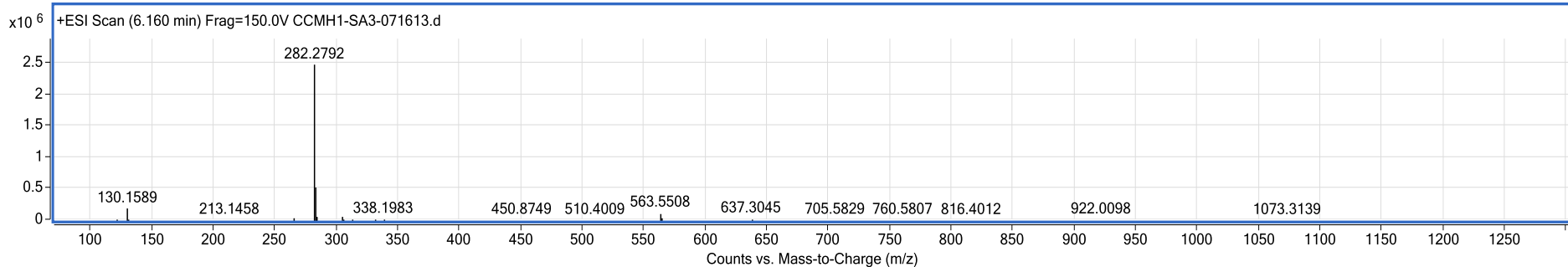
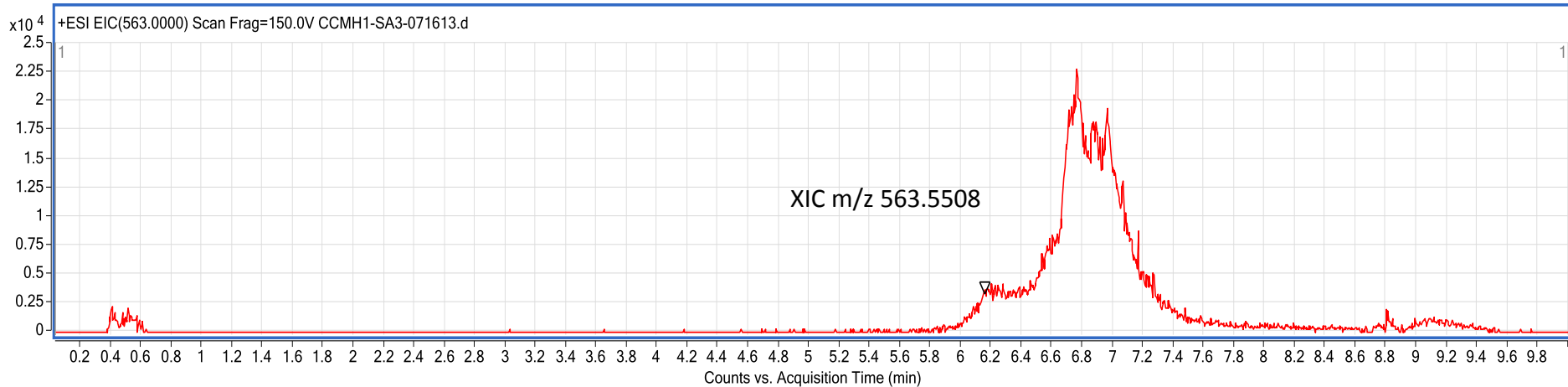
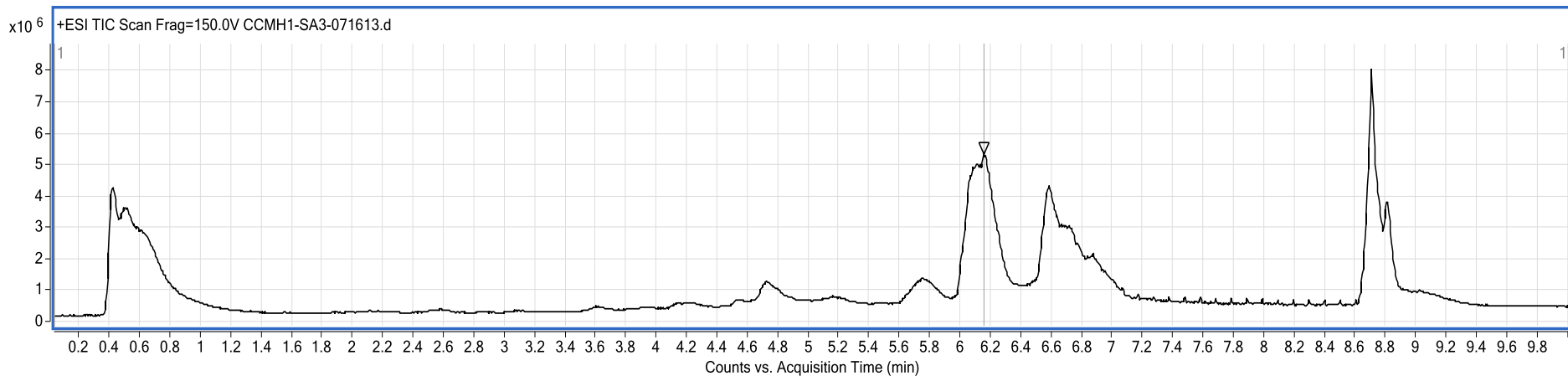
Spotted Nothura (at 583)



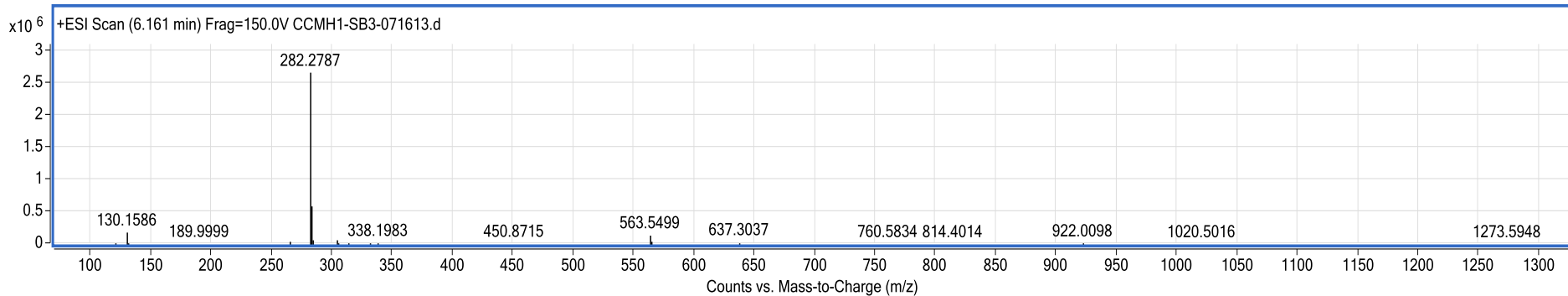
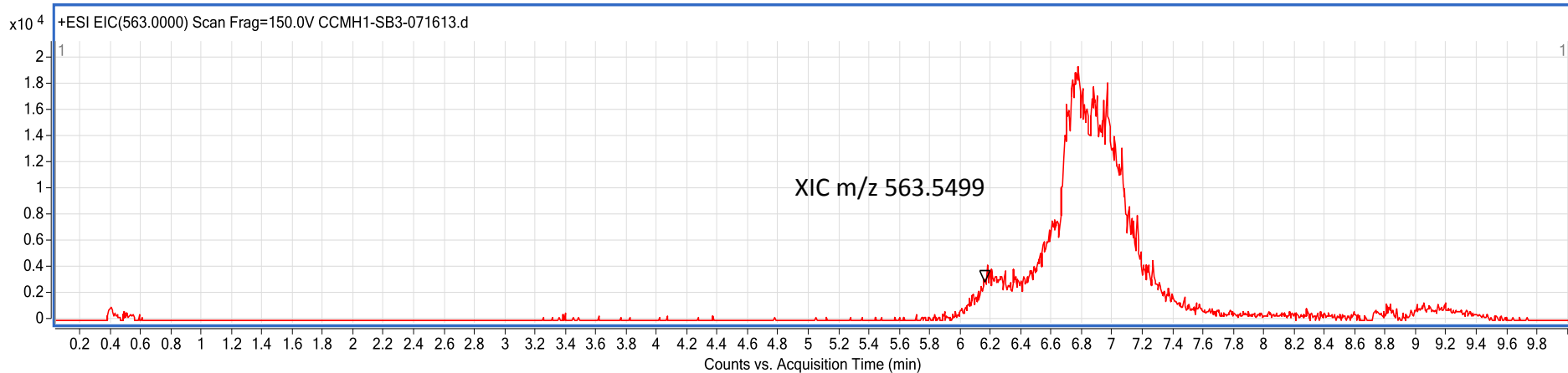
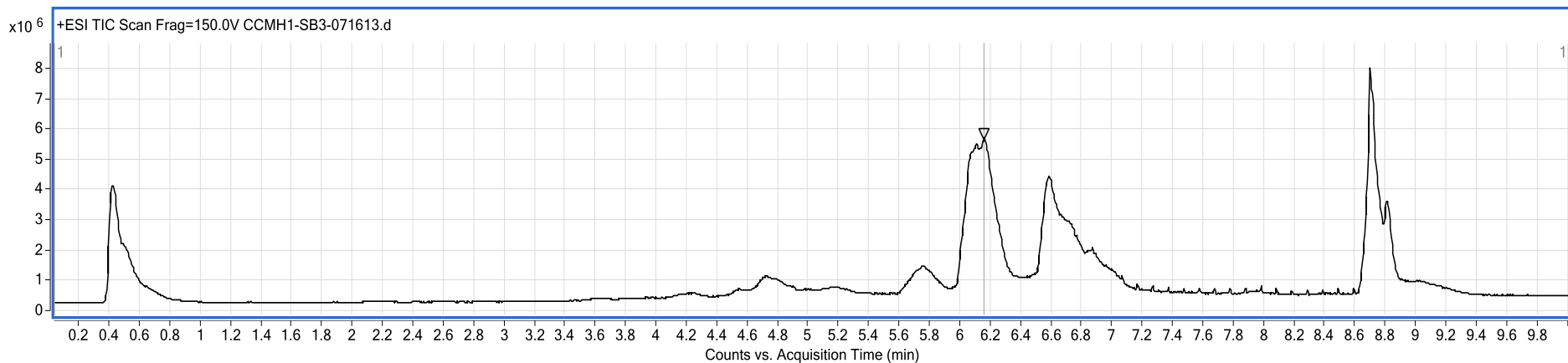
Elegant crested tinamou (at 583)



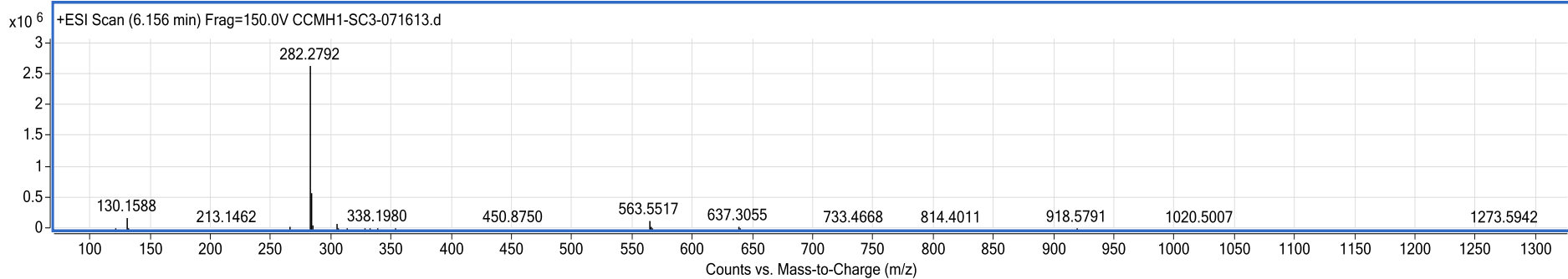
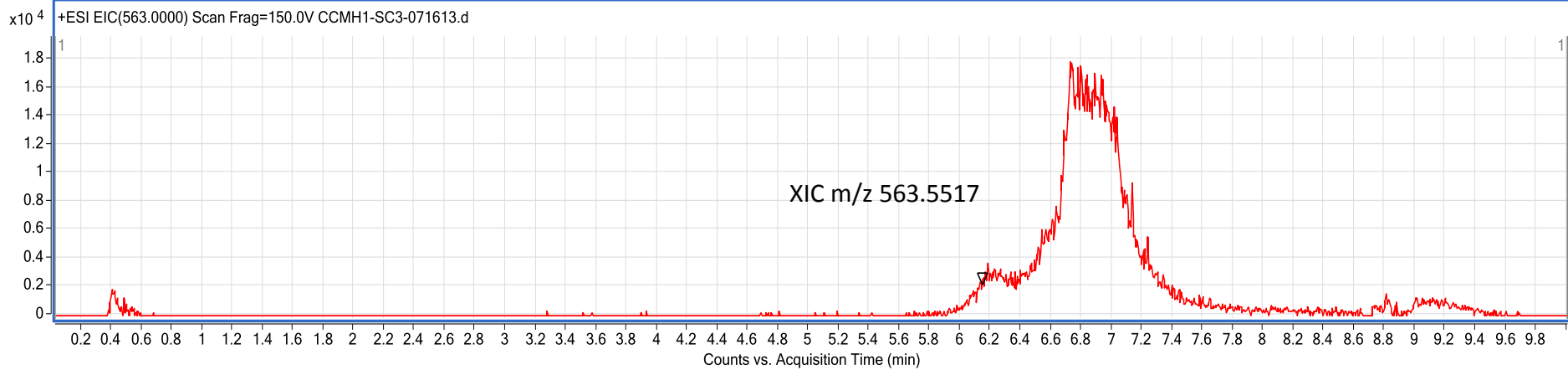
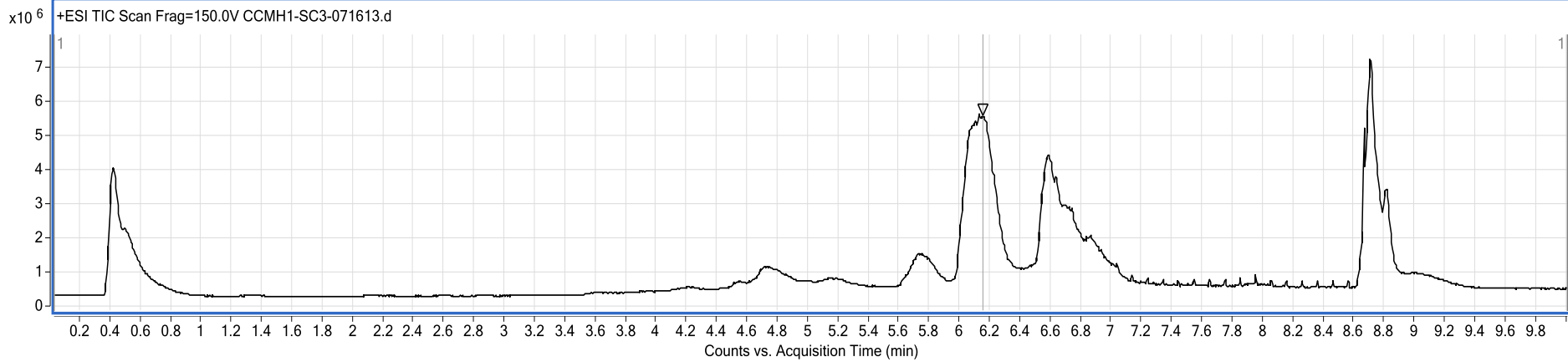
Bivalve sp. (at 563)



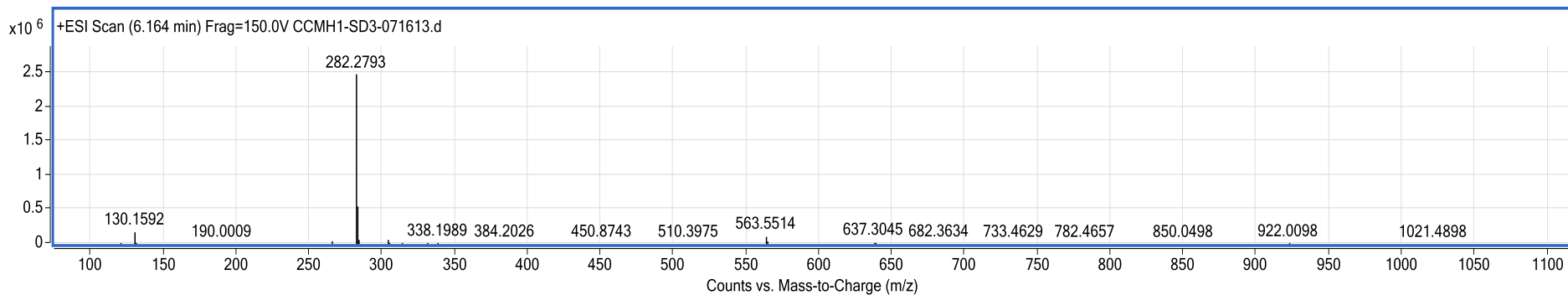
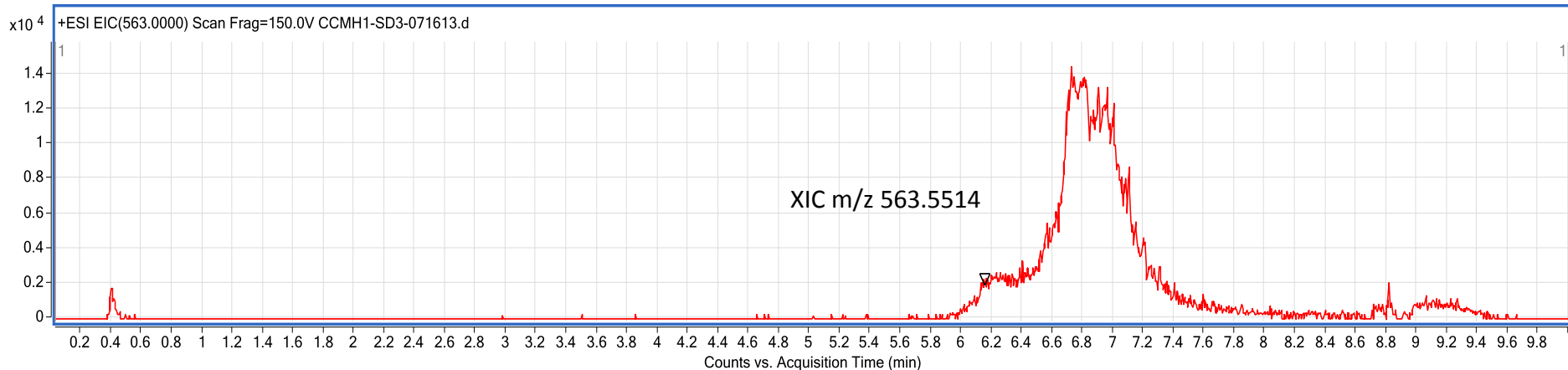
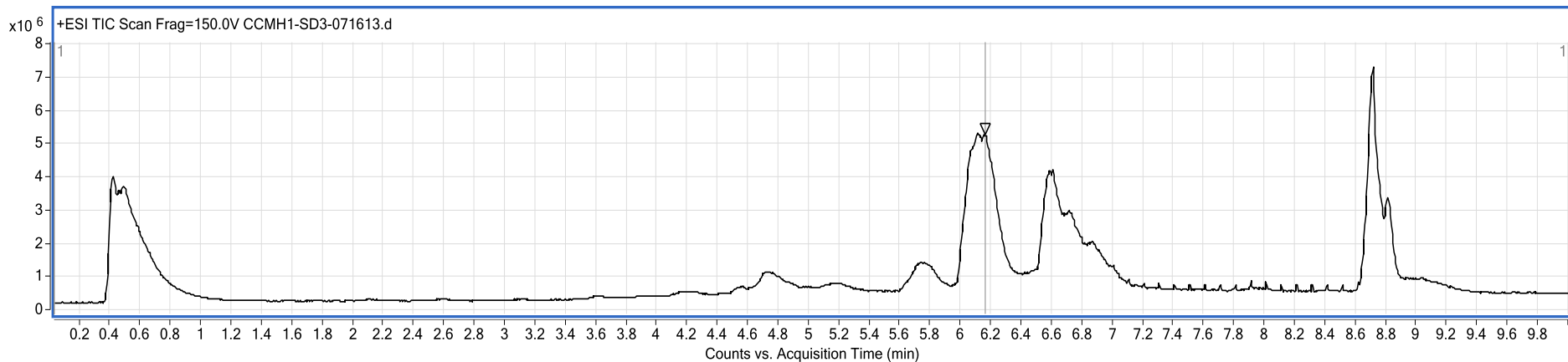
Conus striatus (at 563)



Hastula hectica (at 563)



Conus ebraeus (at 563)



Protoporphyrin IX acid standard

