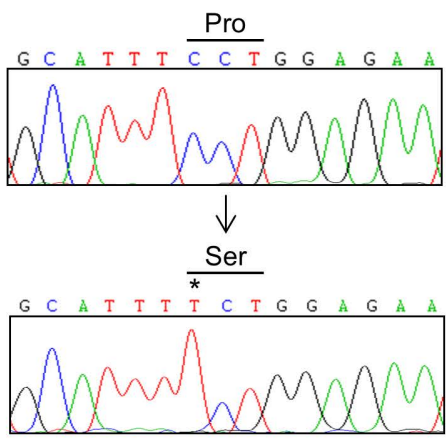
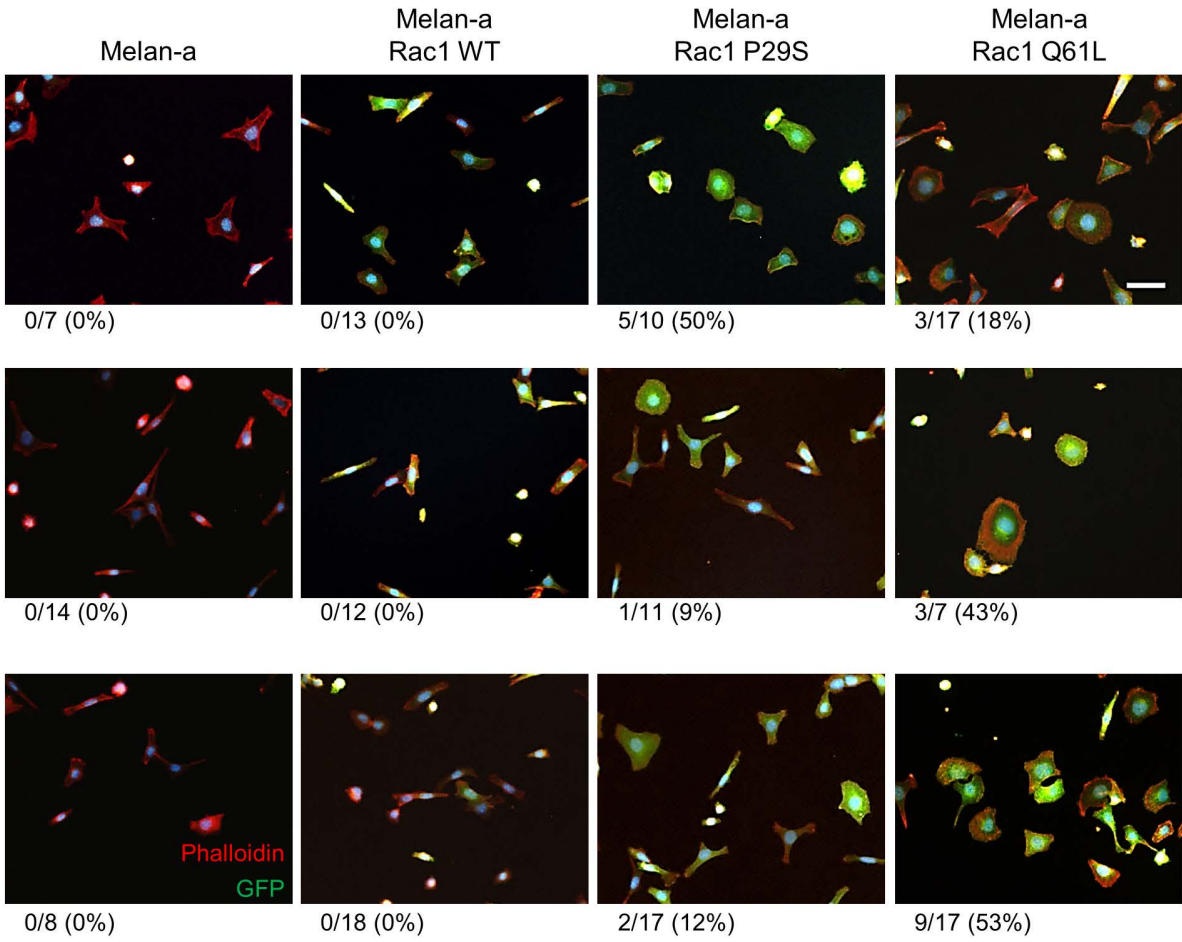


Supplemental Figure 1: Generation of RAC1 P29S

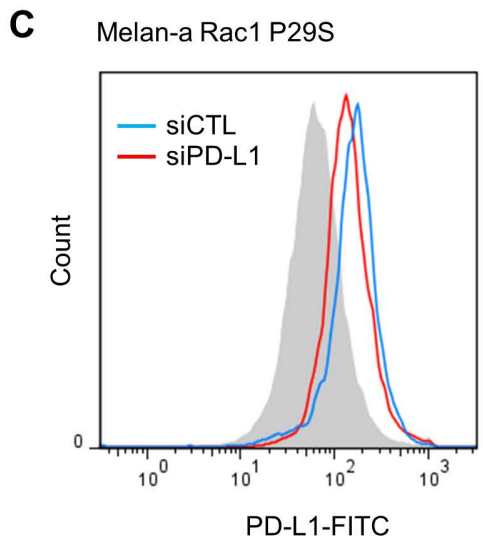
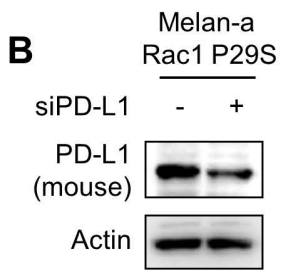
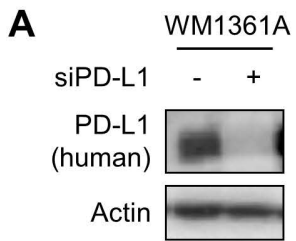
RAC1 P29S



Supplemental Figure 2: RAC1 P29S and RAC1 Q61L expression increases membrane ruffling



Supplemental Figure 3: Validation of PD-L1 antibodies



Supplemental Methods

PD-L1 knockdown. Melan-a cells expressing RAC1 P29S and YUHEF cells were transfected for 4 hours with chemically synthesized short-interfering RNA (siRNA) at a final concentration of 25 nM using OligofectAMINE (Invitrogen). Cells were harvested after a further 68 hours. The PD-L1 siRNAs (D-015836-01 for human and D-040760-01 for mouse) were purchased from Dharmacon Inc. (Lafayette, CO).