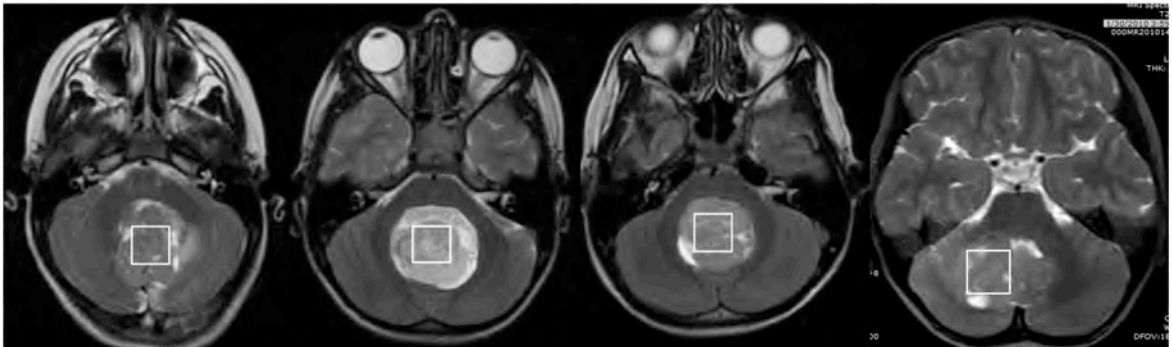


SHH

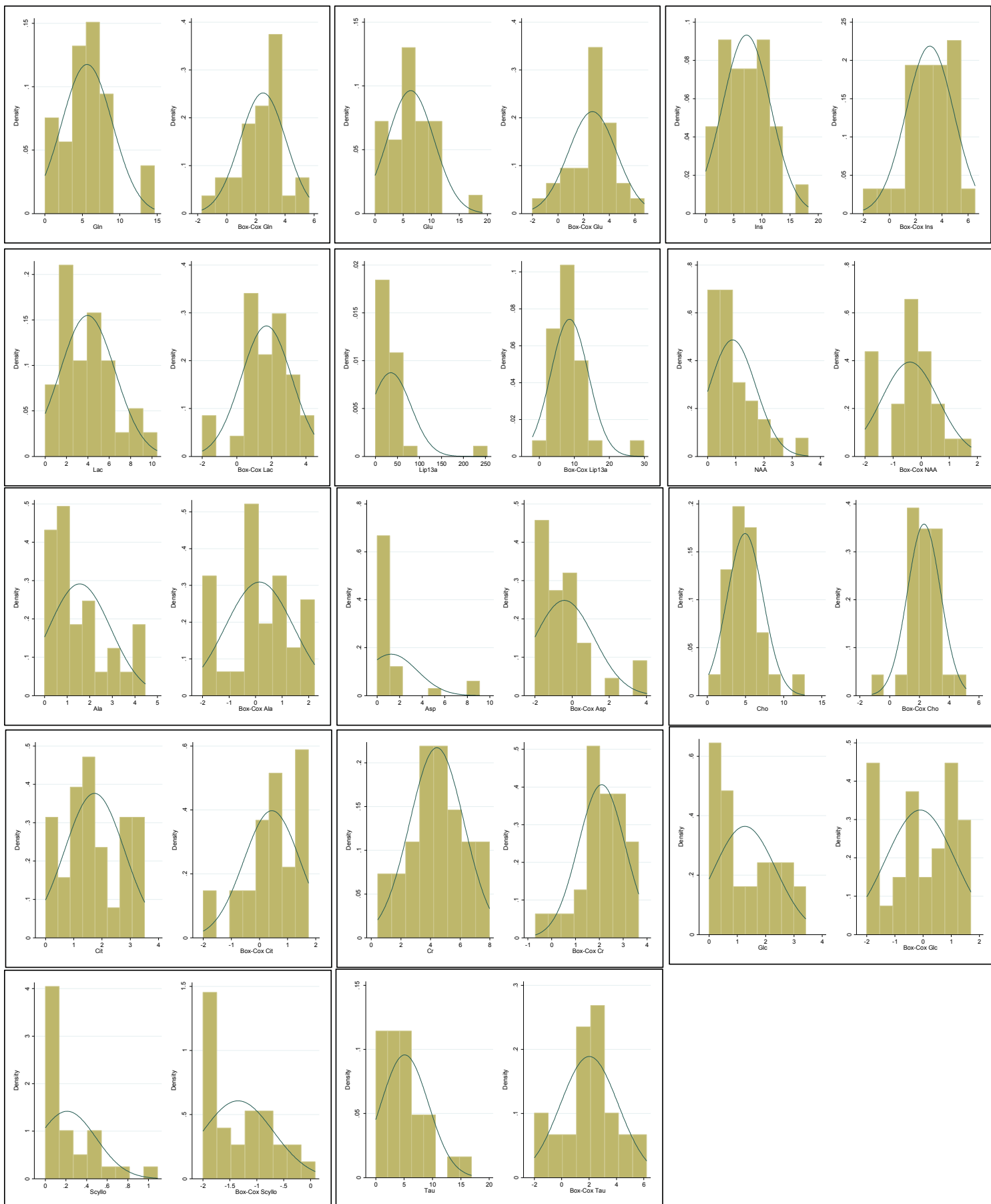
Group 3

Group 4

WNT



Supplemental Figure 1. T2-weighted MRI of medulloblastoma subtypes with square boxes indicated the region of interest (ROI) for MR spectroscopy. Medulloblastomas are generally large tumors that can be well distinguished from surrounding normal brain tissue even on non-contrast enhanced MRI. It is thus possible to place ROIs for MRS that avoid any partial volume with surrounding brain tissue. Furthermore, ROIs were placed to minimize inclusion of necrotic or cystic regions.



Supplemental Figure 2. Distribution of metabolite signals before and after Box-Cox transformation.