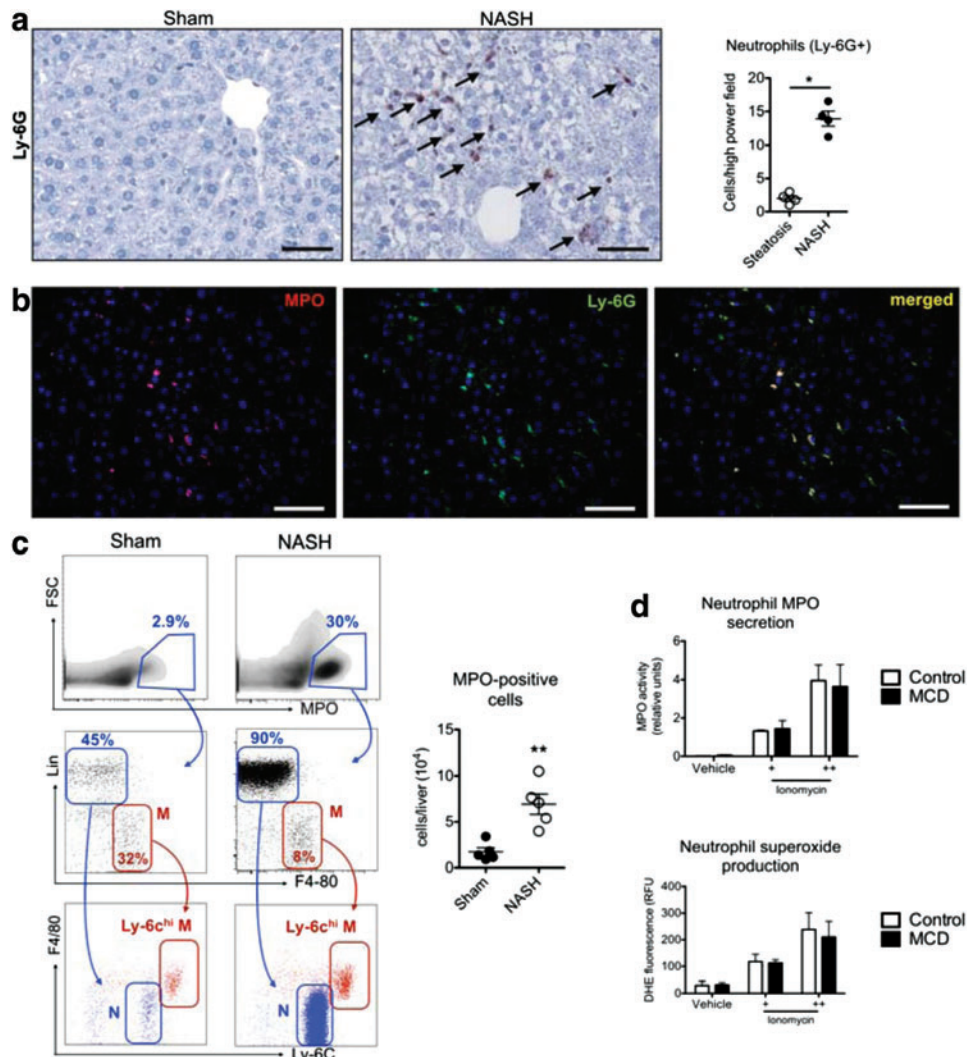


Supplementary Data



SUPPLEMENTARY FIG. S1. (a) Immunohistochemistry of Ly-6G-positive neutrophils in nonalcoholic steatohepatitis (NASH) versus sham ($n=4$ per group) arrows indicate Ly-6G positive cells). Bar = 50 μm . (b) Immunofluorescence microscopy in NASH for myeloperoxidase (MPO) (red) and neutrophils (Ly-6G, green). Bar = 50 μm . Blue = DAPI. (c) Flow cytometric analysis of MPO-expressing cells (N = neutrophils, M = monocytes, $n=4-5$ per group). (d) MPO secretion and superoxide anion generation of neutrophils isolated from mice fed methionine and choline-deficient (MCD) diet versus control diet and stimulated with ionomycin ($n=3$ per group) All data are mean \pm SEM. Lin = CD90/CD49.2/B220/NK1.1/Ly-6G. * $p < 0.05$, ** $p < 0.01$. + 500 ng/ml ionomycin. ++ 2000 ng/ml ionomycin.