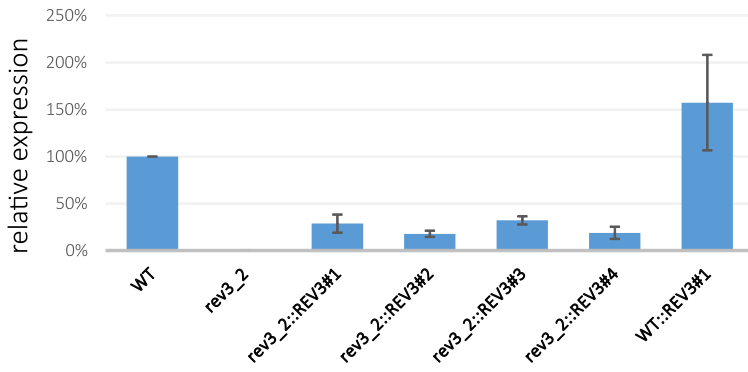
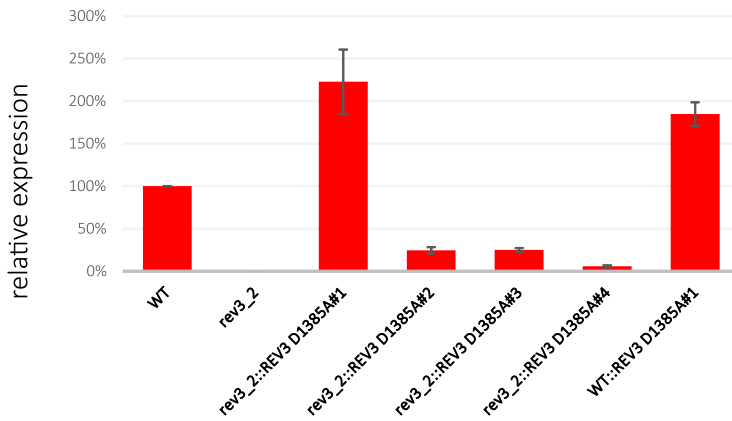


A Expression of WT REV3 constructs



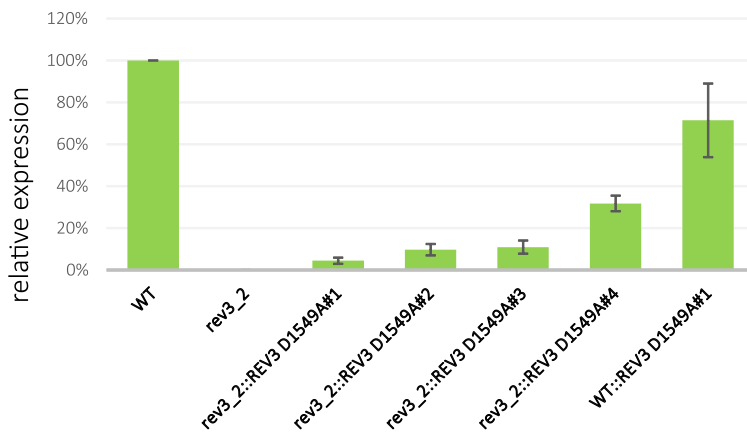
| | rev3_2 | WT#1 | WT#2 | WT#3 | WT#4 | control |
|----------------------|--------|-------|-------|-------|-------|---------|
| p-value to wild type | 0,000 | 0,006 | 0,001 | 0,001 | 0,002 | 0,189 |
| p-value to rev3_2 | | 0,035 | 0,011 | 0,006 | 0,036 | 0,033 |
| p-value to WT#1 | | | 0,180 | 0,620 | 0,225 | 0,044 |
| p-value to WT#2 | | | | 0,013 | 0,815 | 0,041 |
| p-value to WT#3 | | | | | 0,049 | 0,050 |
| p-value to WT#4 | | | | | | 0,040 |

B Expression of REV3 D1385A constructs



| | rev3_2 | D1385A#1 | D1385A#2 | D1385A#3 | D1385A#4 | control |
|----------------------|--------|----------|----------|----------|----------|---------|
| p-value to wild type | 0,000 | 0,030 | 0,001 | 0,000 | 0,000 | 0,009 |
| p-value to rev3_2 | | 0,009 | 0,008 | 0,002 | 0,012 | 0,002 |
| p-value to D1385A#1 | | | 0,011 | 0,012 | 0,010 | 0,217 |
| p-value to D1385A#2 | | | | 0,836 | 0,008 | 0,001 |
| p-value to D1385A#3 | | | | | 0,001 | 0,002 |
| p-value to D1385A#4 | | | | | | 0,002 |

C Expression of REV3 D1549A constructs



| | rev3_2 | D1549A#1 | D1549A#2 | D1549A#3 | D1549A#4 | control |
|----------------------|--------|----------|----------|----------|----------|---------|
| p-value to wild type | 0,000 | 0,000 | 0,000 | 0,000 | 0,001 | 0,106 |
| p-value to rev3_2 | | 0,034 | 0,025 | 0,025 | 0,005 | 0,020 |
| p-value to D1549A#1 | | | 0,059 | 0,050 | 0,002 | 0,022 |
| p-value to D1549A#2 | | | | 0,633 | 0,002 | 0,024 |
| p-value to D1549A#3 | | | | | 0,002 | 0,024 |
| p-value to D1549A#4 | | | | | | 0,054 |

Supplemental Figure 1: Expression levels of the REV3, REV3 D1385A and REV3 D1549A constructs

Expression of REV3 constructs was measured via qRT PCR. As expected, no expression was measurable in the *rev3-2* mutant. The data are the results of three independent biological replicates. In the tables are the respective p-values for a Student's t-test shown.