

Fig S1 (A)



Fig S1 (B)

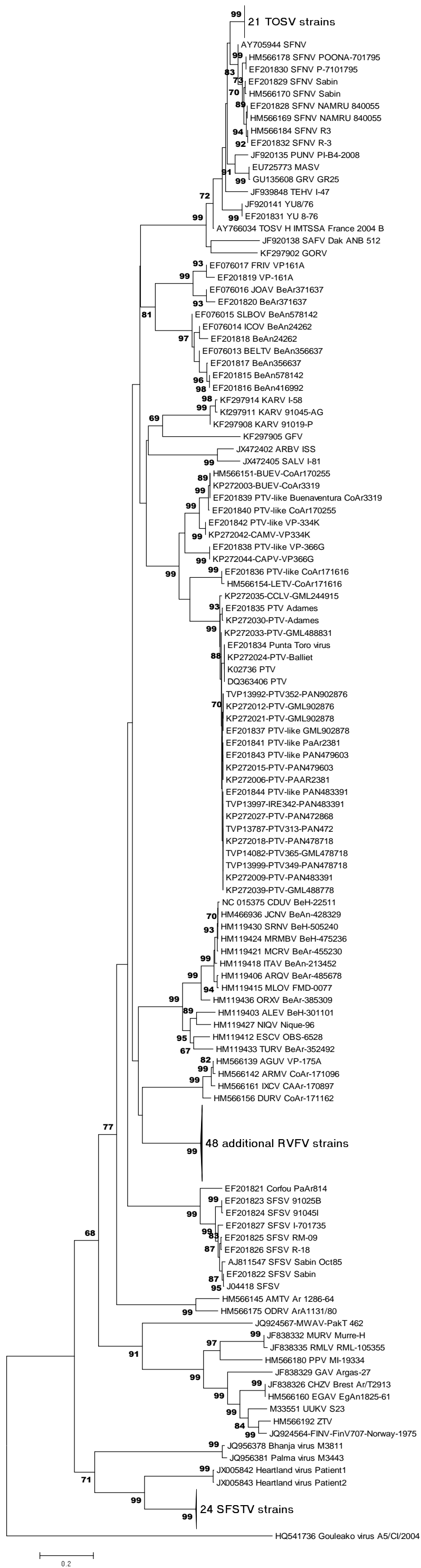


Fig S1 (C)

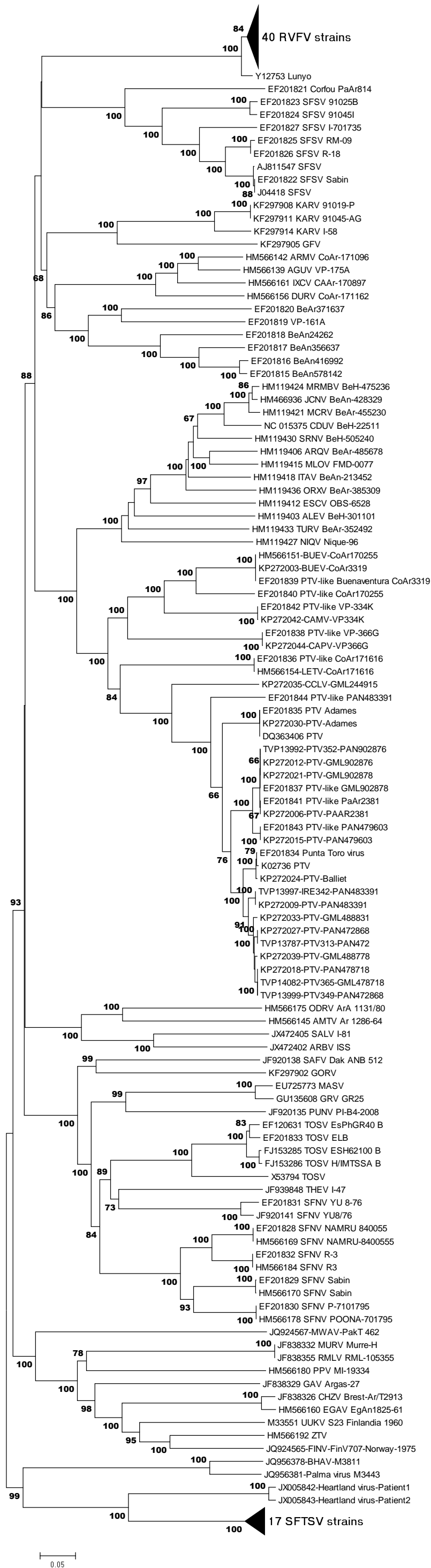
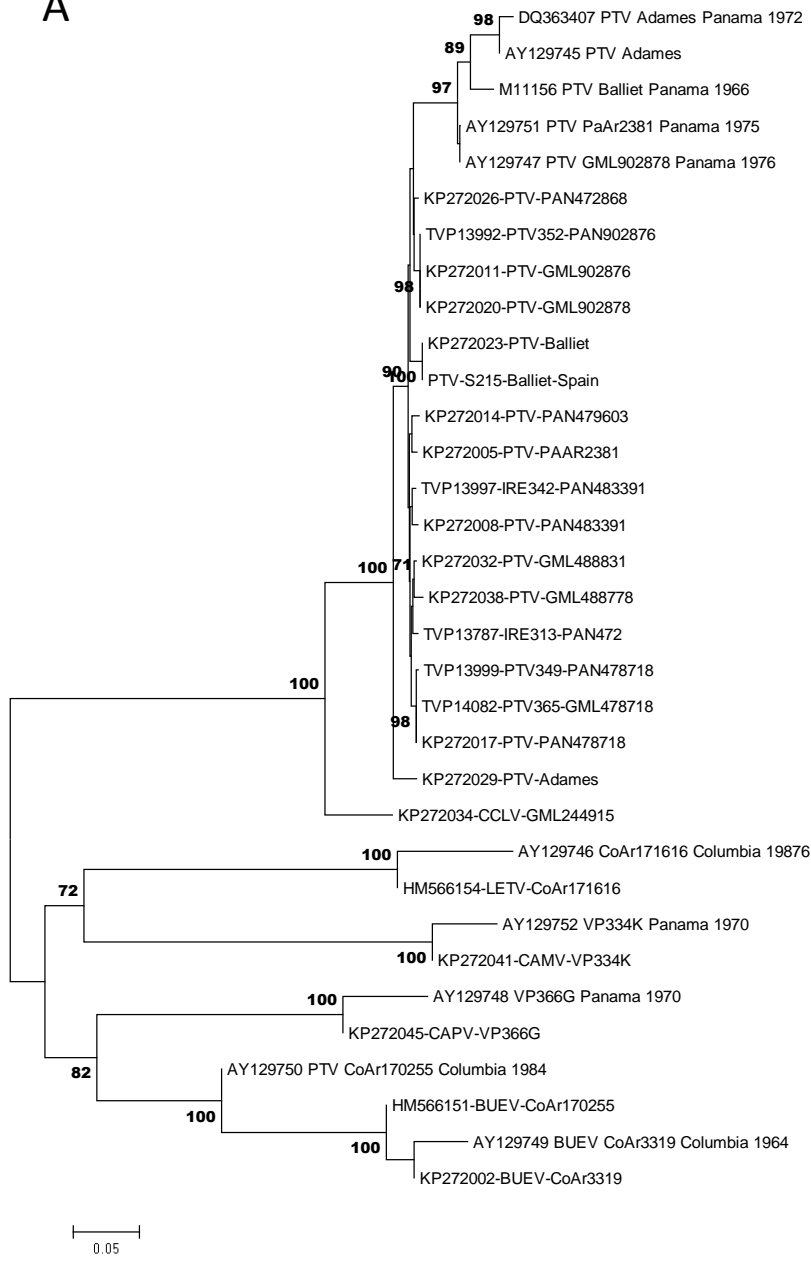
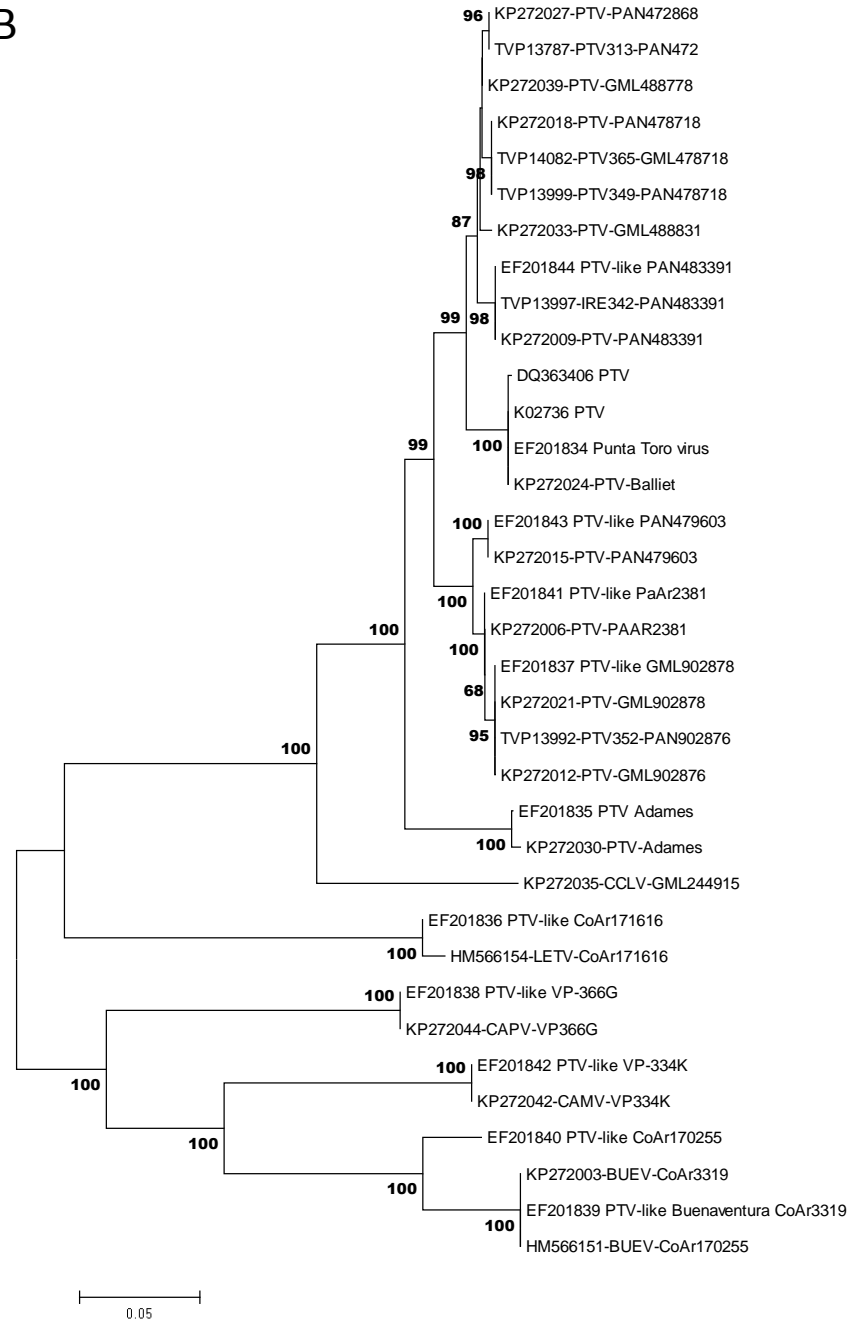


Fig S2

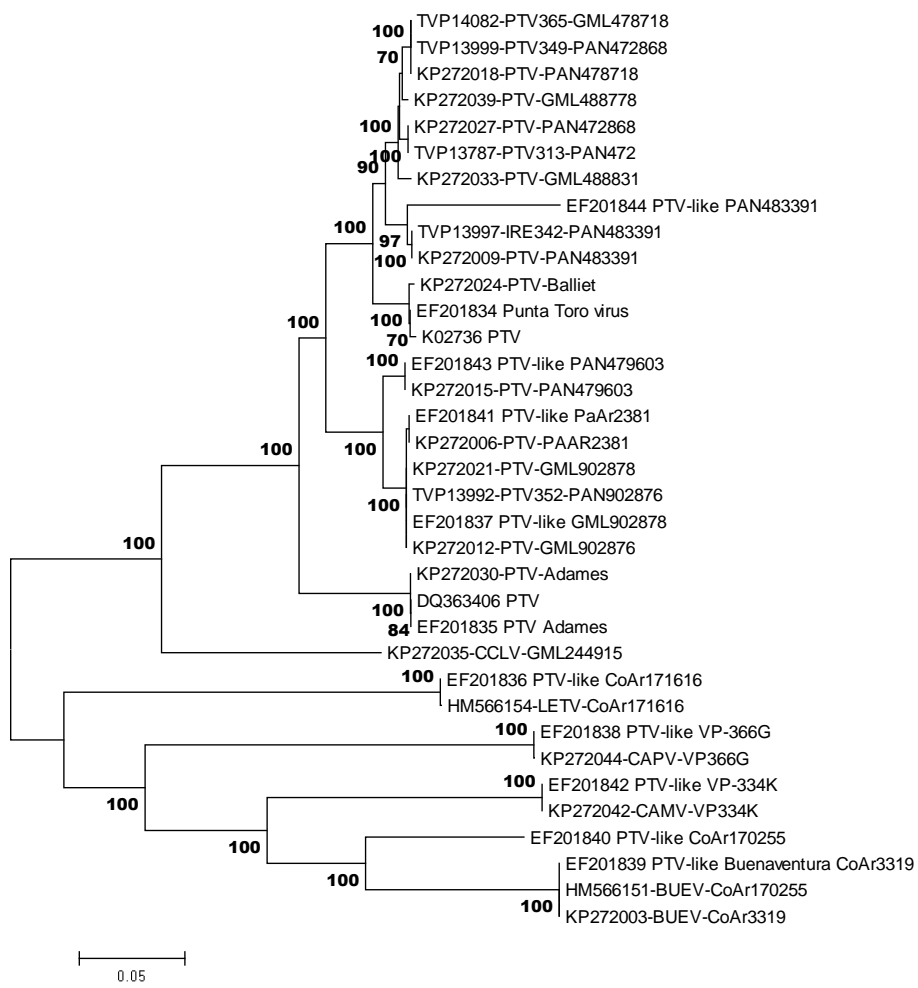
A



B



C



Supplementary Figure Legends

Fig S1 (A-C). Phylogenetic analysis of the available sequences of phlebovirus (a) M, (b) N, and (c) NSs ORF. Sequences marked with red dots (Punta Toro species complex) corresponded to sequenced obtained during this work. The evolutionary history was inferred using the Neighbor-Joining method.

Fig S2 (A-C). Phylogenetic analysis of all members of the Punta Toro species complex (a) M, (b) N, and (c) NSs ORF. The evolutionary history was inferred using the Neighbor-Joining method.