

Diterpenoids from the Roots of *Salvia yunnanensis*

Fan Xia, Chun-Yan Wu, Xing-Wei Yang, Xian Li, and Gang Xu

Supplementary material

Table of Contents

- Figures S1–S15: The original NMR and MS spectra of the new compounds.

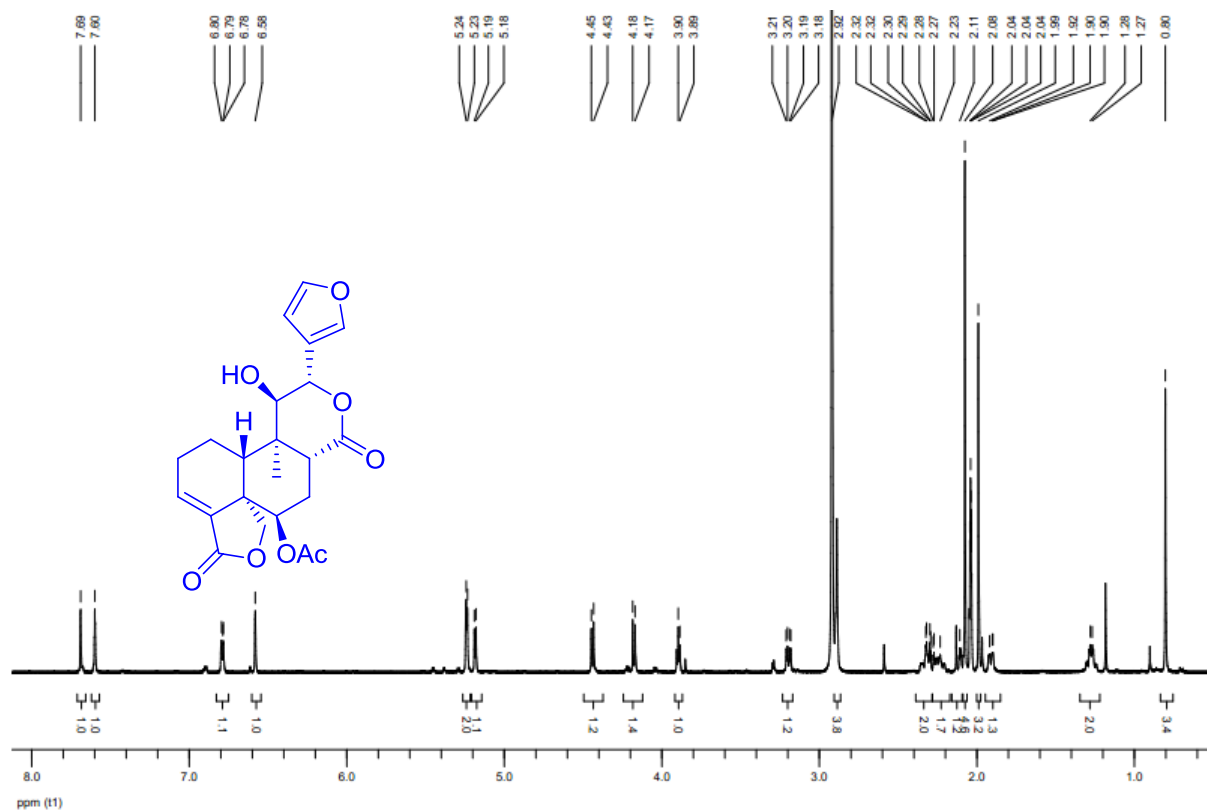


Figure S1. ^1H (in acetone- d_6) spectrum of salyunnanin I (**1**).

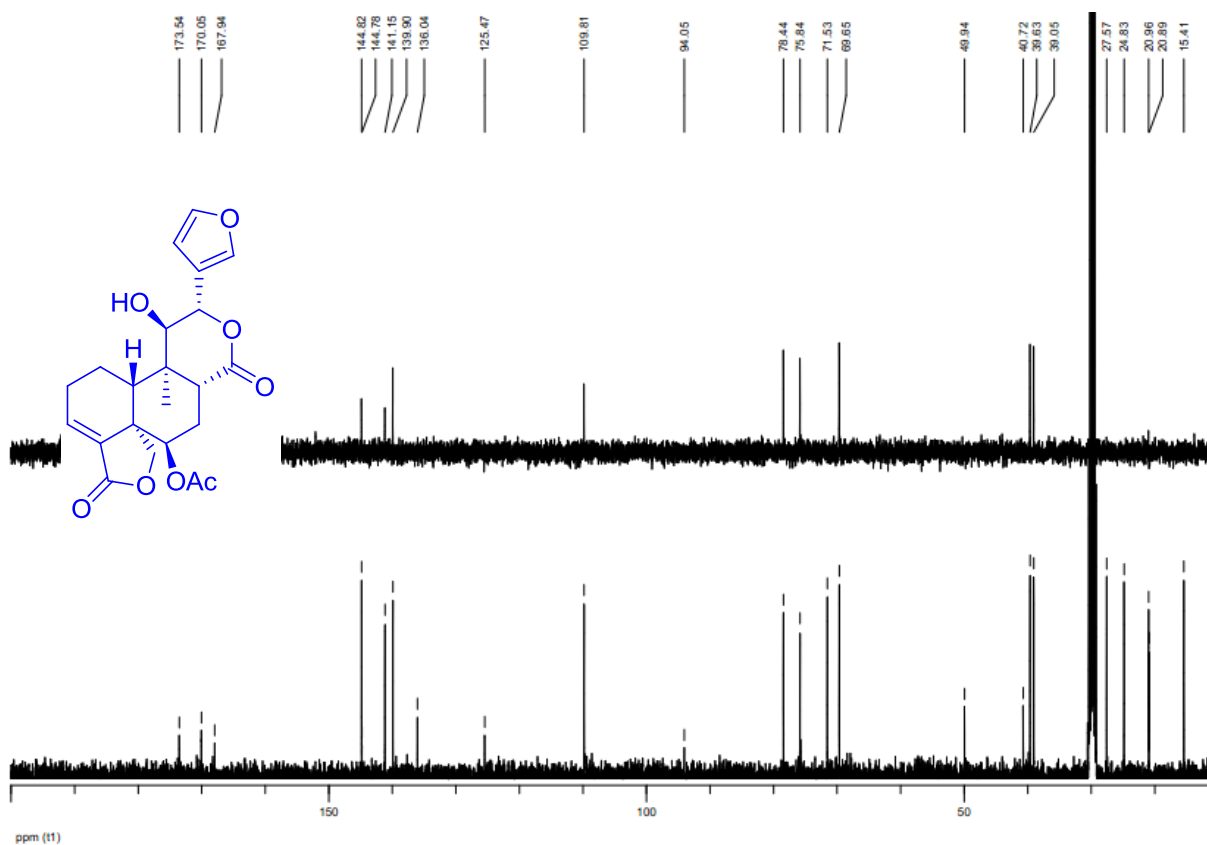


Figure S2. ^{13}C and DEPT (in acetone- d_6) spectra of salyunnanin I (**1**).

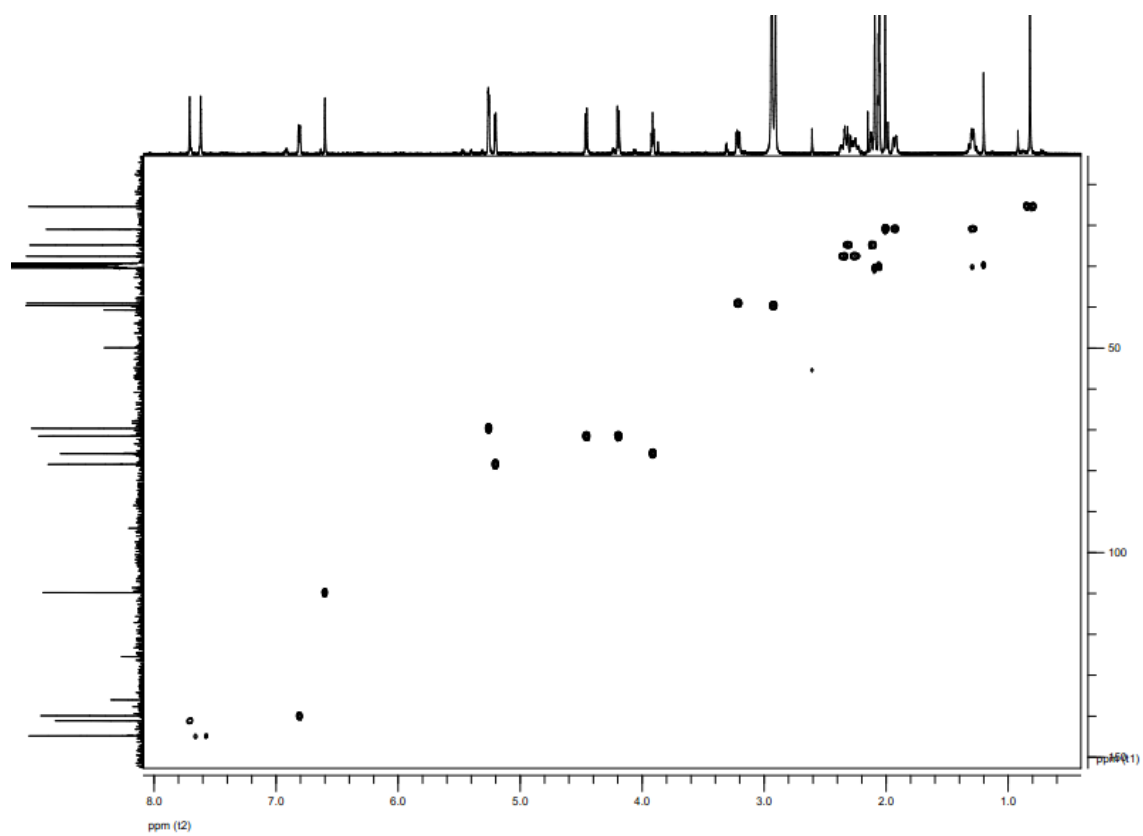


Figure S3. HSQC spectrum of salyunnanin I (**1**).

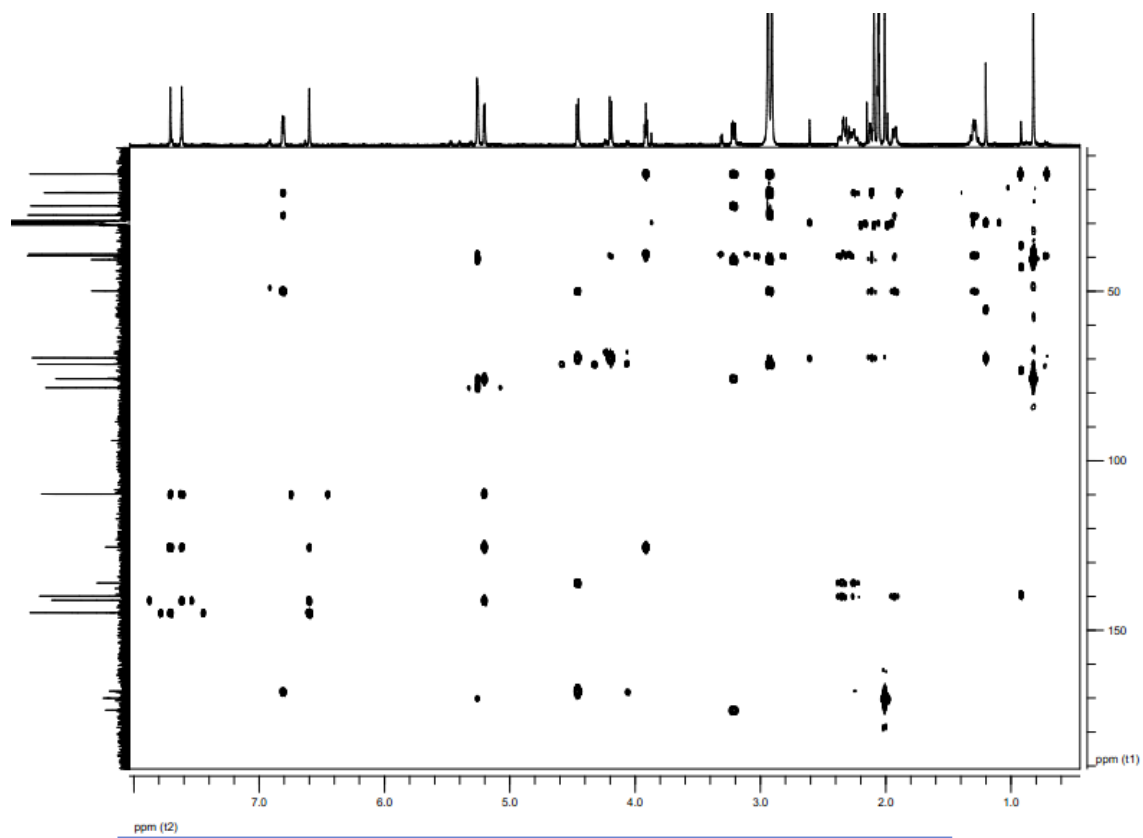


Figure S4. HMBC spectrum of salyunnanin I (**1**).

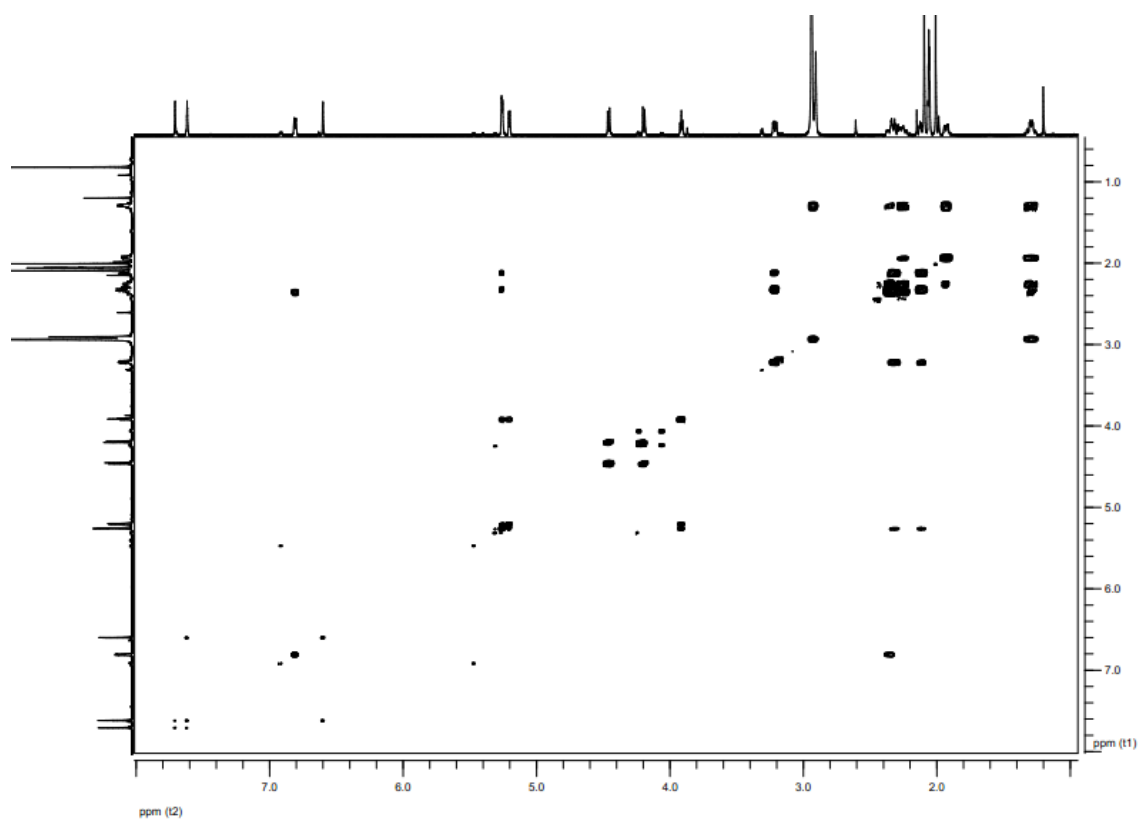


Figure S5. ¹H–¹H COSY spectrum of salyunnanin I (**1**).

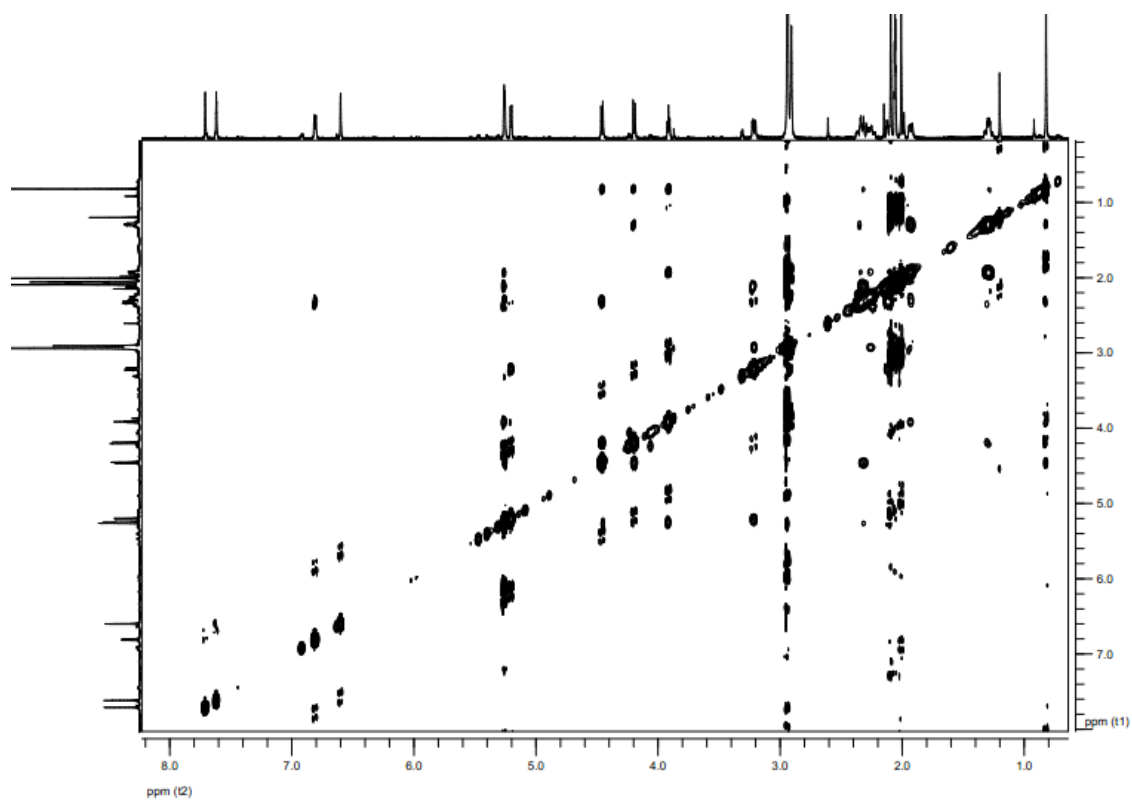


Figure S6. NOESY spectrum of salyunnanin I (**1**).

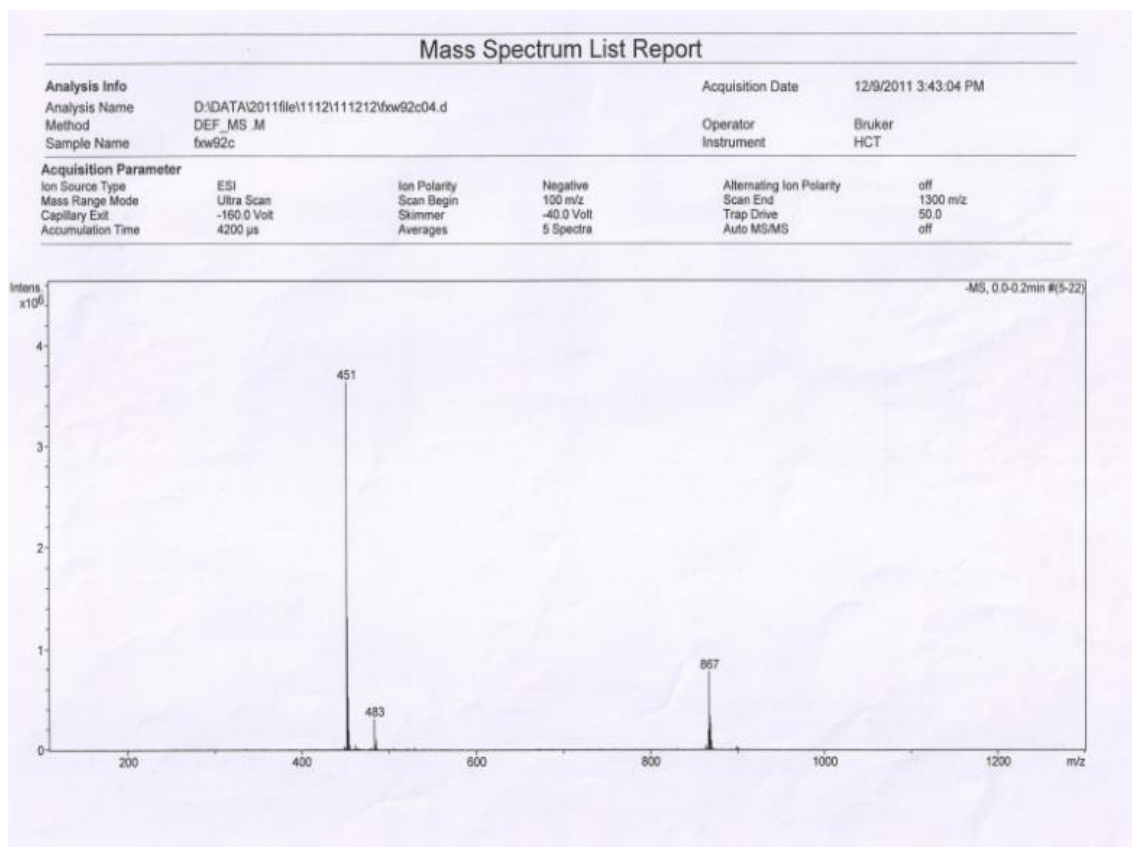


Figure S7. ESIMS spectrum of salyunnanin I (**1**).

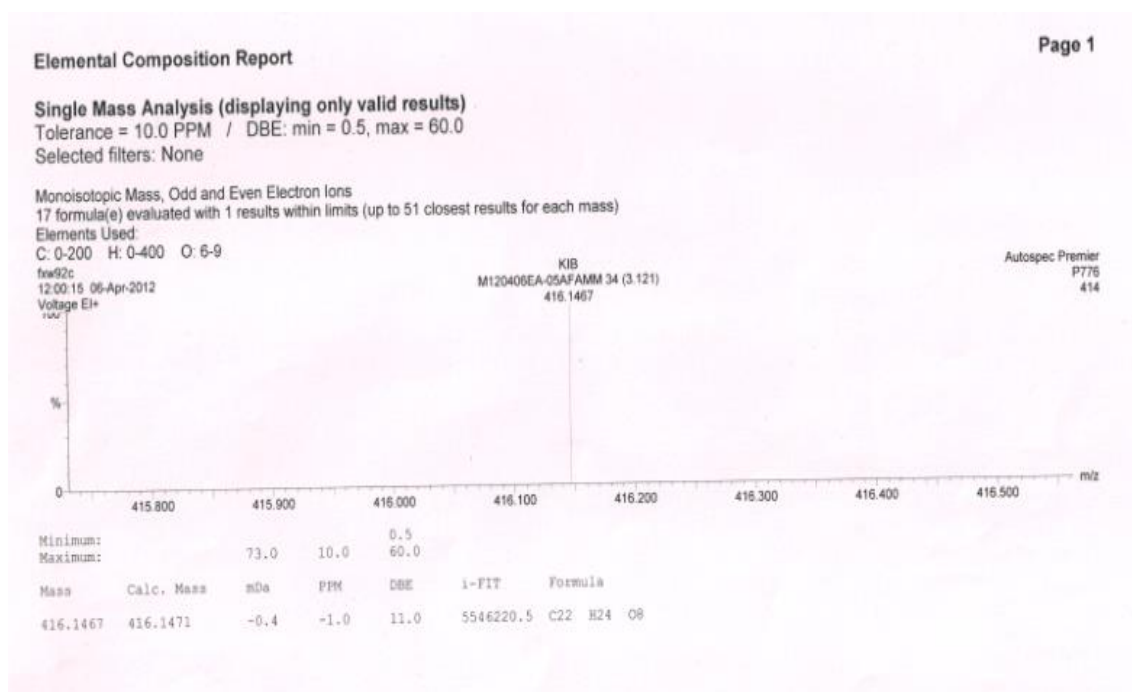


Figure S8. HR-EIMS spectrum of salyunnanin I (**1**).

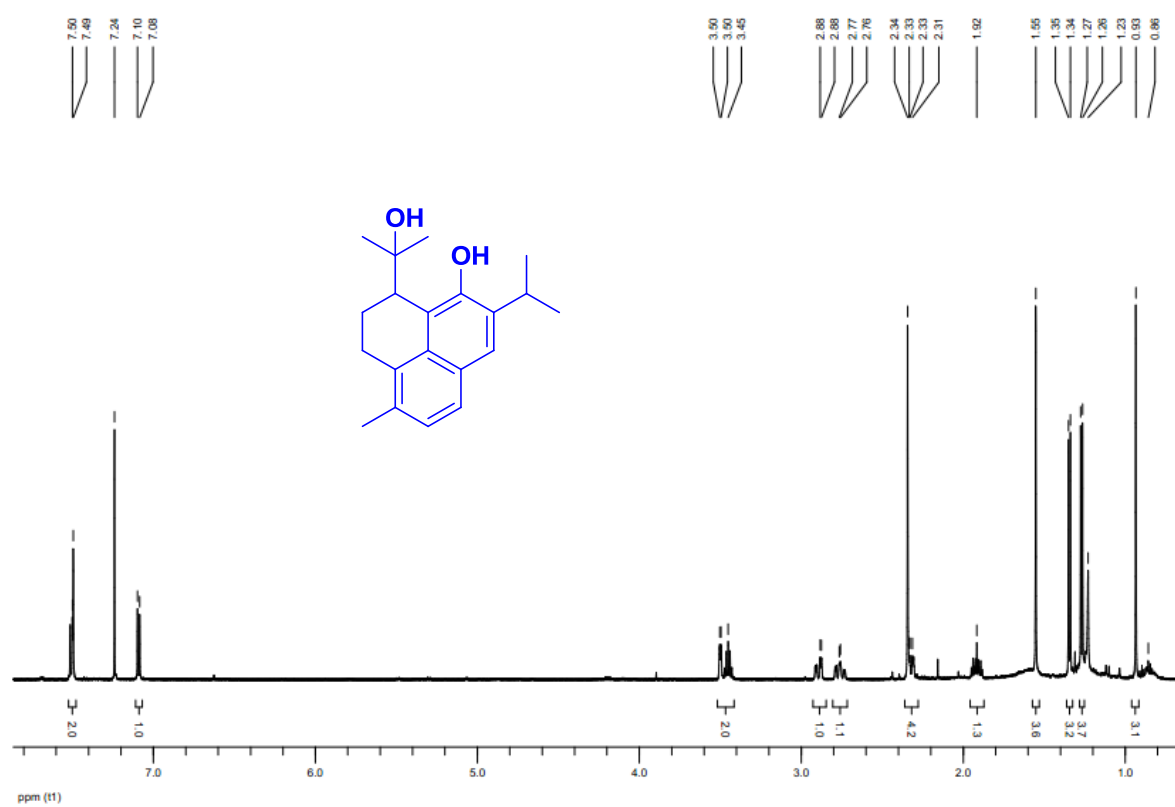


Figure S9. ^1H (in CDCl_3) spectrum of salyunnanin J (**2**).

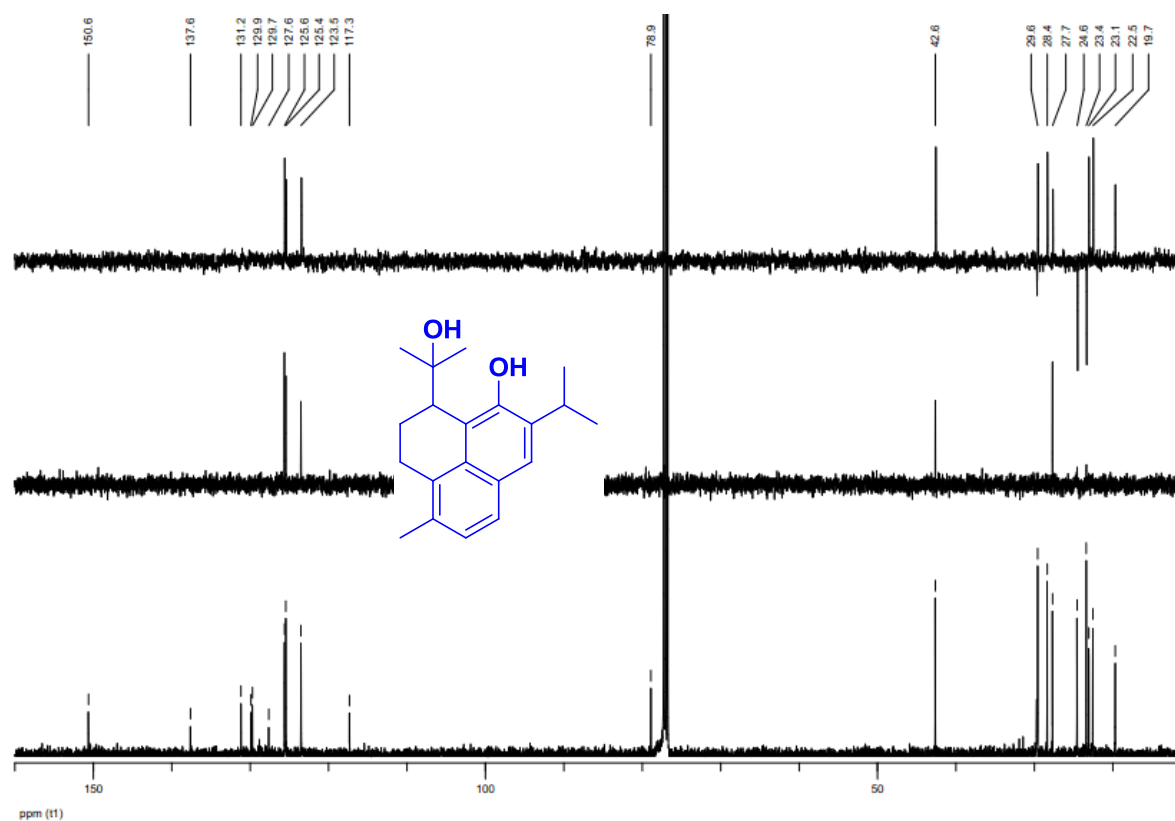


Figure S10. ^{13}C and DEPT (in CDCl_3) spectra of salyunnanin J (**2**).

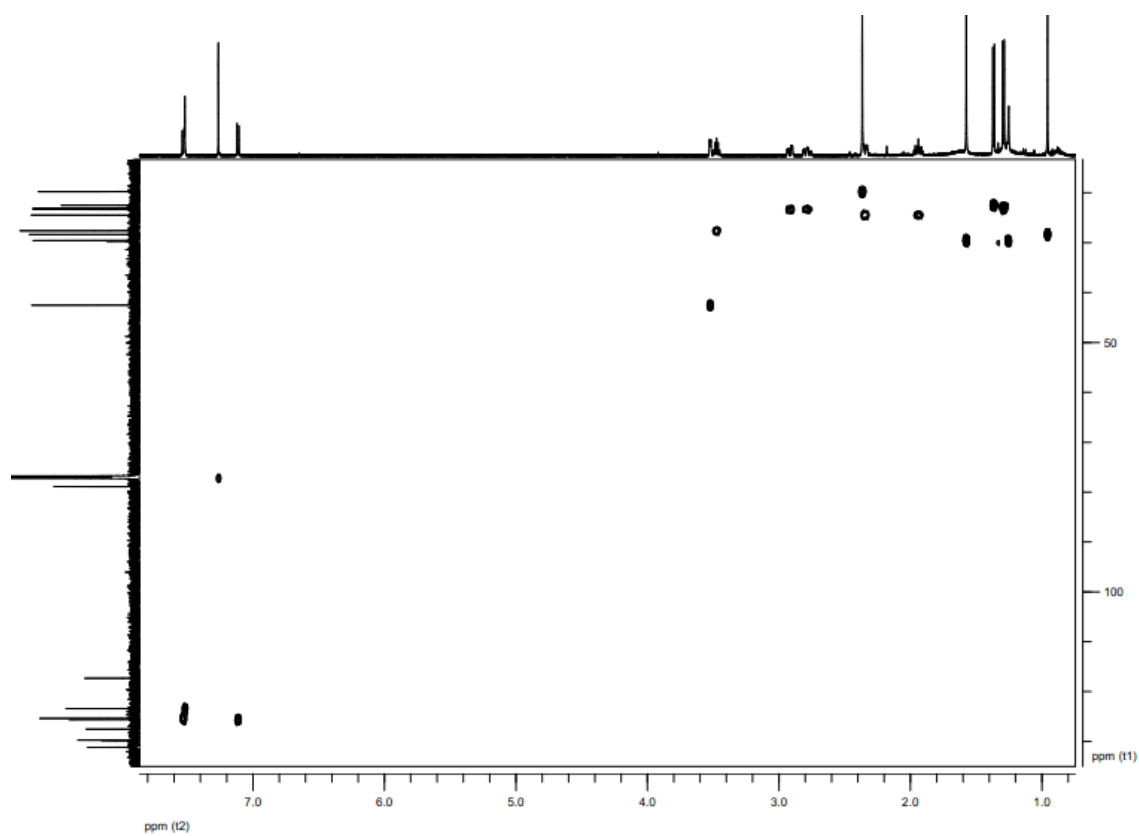


Figure S11. HSQC spectrum of salyunnanin J (2).

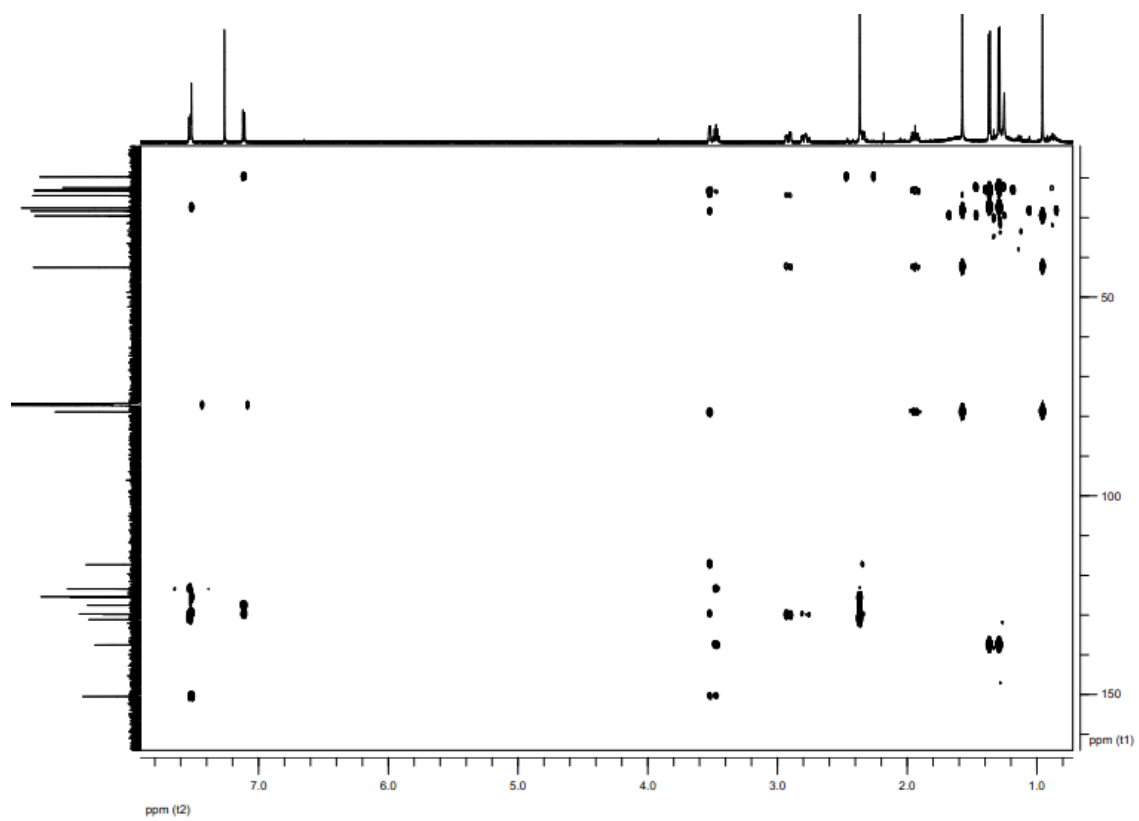


Figure S12. HMBC spectrum of salyunnanin J (2).

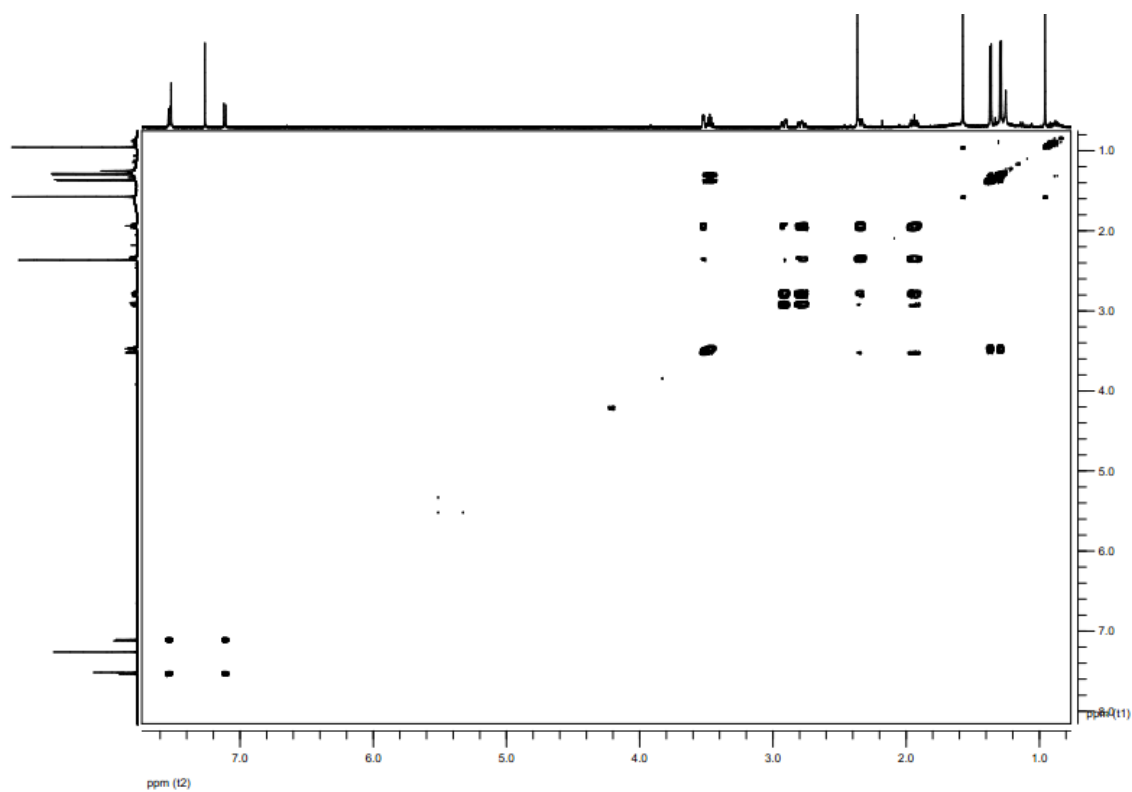


Figure S13. ^1H - ^1H COSY spectrum of salyunnanin J (2).

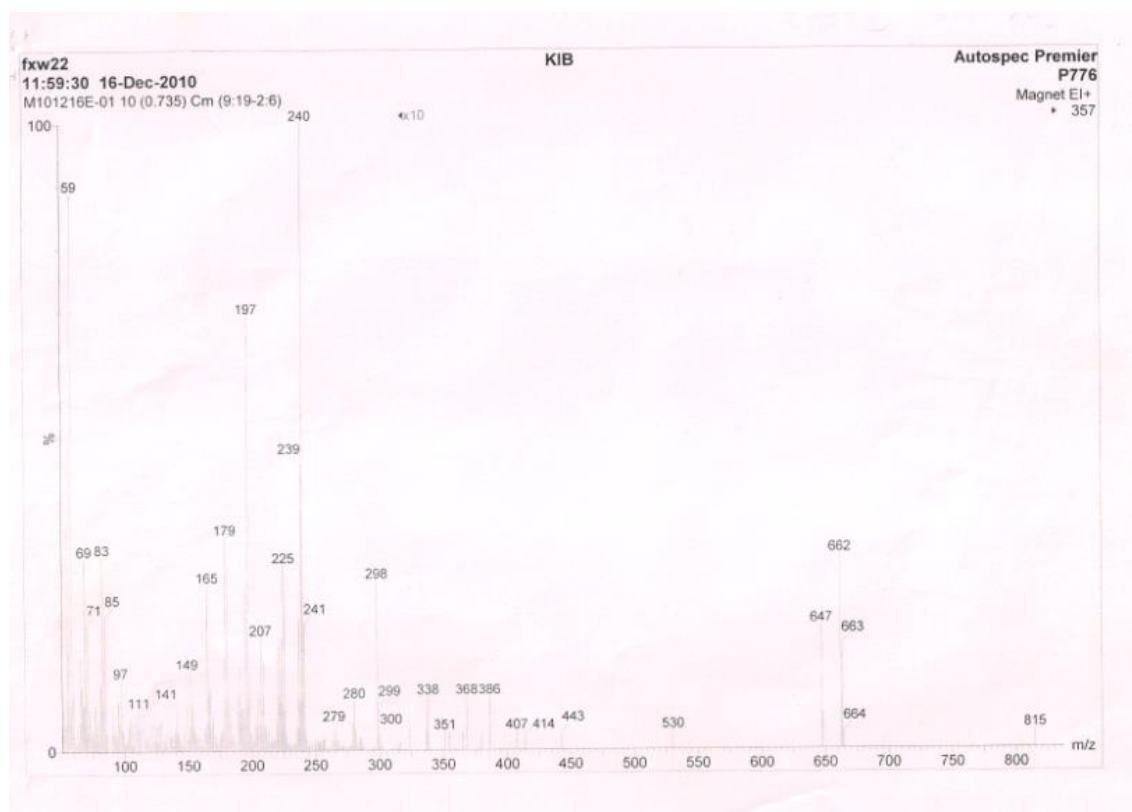


Figure S14. EIMS spectrum of salyunnanin J (2).

Acq. Date: Wednesday, February 08, 2012

Acq. Time: 13:31

Sample Name: 120207ESIA fxw22

Elemental composition calculator

Target m/z: +321.1835 amu
 Tolerance: +10.0000 ppm
 Result type: Elemental
 Max num of results: 1000
 Min DBE: -10.0000 Max DBE: +60.0000
 Electron state: OddAndEven
 Num of charges: 0
 Add water: N/A
 Add proton: N/A
 File Name: 120207ESIA fxw22.wiff

	Elements	Min Number	Max Number
1	2H	0	0
2	Br	0	0
3	C	0	200
4	Cl	0	0
5	F	0	0
6	H	0	400
7	I	0	0
8	K	0	0
9	N	0	0
10	Na	1	1

Acq. Date: Wednesday, February 08, 2012

Acq. Time: 13:31

Sample Name: 120207ESIA fxw22

	Elements	Min Number	Max Number
11	O	0	4
12	P	0	0
13	Pt	0	0
14	S	0	0
15	Si	0	0

	Formula	Calculated m/z (amu)	mDa Error	PPM Error	DBE
1	C20 H26 O2 Na	321.1830	0.4499	1.4010	7.5

Figure S15. HR-ESIMS spectrum of salyunnanin J (2).