

Supporting information

Figure legends

Figure S1: TEM analysis of the OVCAR-5 cell after treatment with Au-C225-FR, Au-C225-IgG.

Cells were treated with dual conjugates or mono conjugates or its isotype control Au-IgG, at 37 °C for 2 h. Figure S2A, 2C and 2D represent TEM micrographs of OVCAR-5 cells after treatment with Au-C225-FR, Au-C225-IgG and Au-FR-IgG, respectively; Figures S2B, D and F represent the high magnification image of the selected region as depicted by arrow in Figures S2A, 2C and 2E, respectively. Au-IgG was hardly seen in the cells and thus not presented.

Figure S2: TEM analysis of the Skov3-ip cells after treatment with Au-C225-FR, Au-C225-IgG and Au-FR-IgG.

Cells were treated with dual conjugates or mono conjugates or its isotype control Au-IgG, at 37 °C for 2 h. Figure S2A and 2C represent TEM micrographs of Skov3-ip cells after treatment with Au-C225-FR and Au-C225-IgG, respectively; Figures S2B and 2D represent the high magnification image of the selected region as depicted by arrow in Figures S2A and 2C respectively. Similar results were obtained with Au-FR-IgG (data not shown). Au-IgG was hardly seen in the cells and thus not presented.

Figure S1

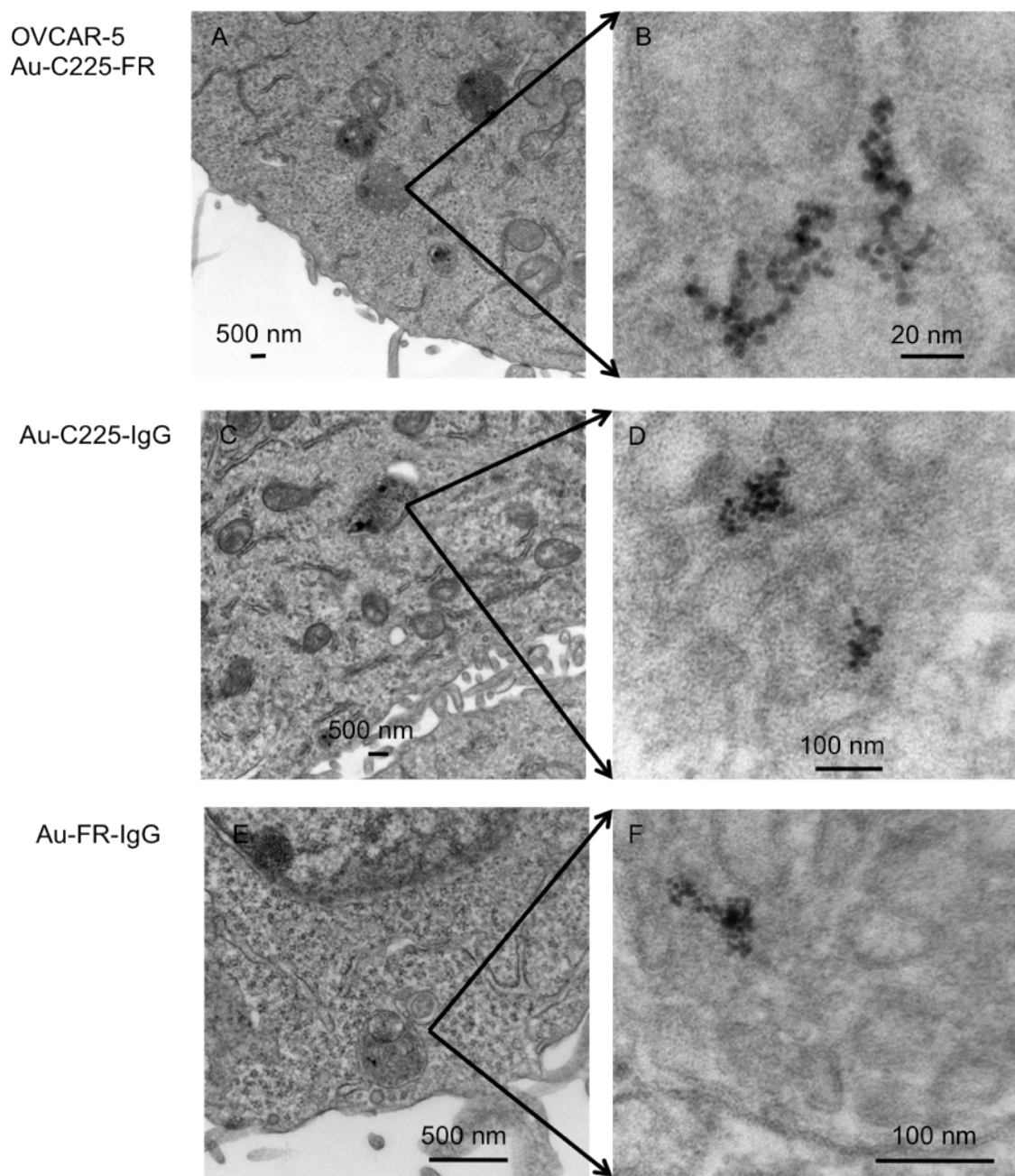
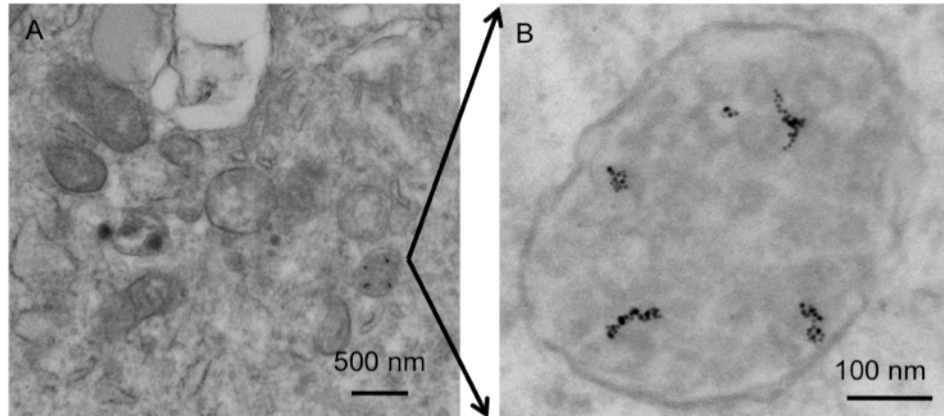


Figure S2

Skov3-ip
Au-C225-FR



Au-C225-IgG

