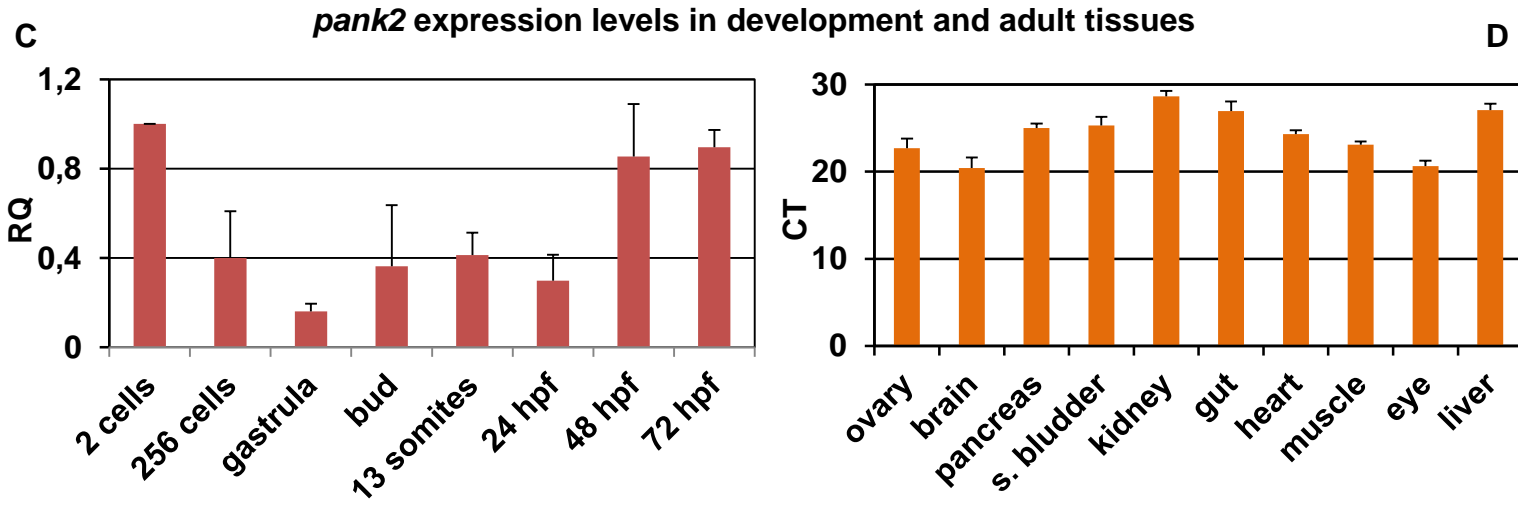
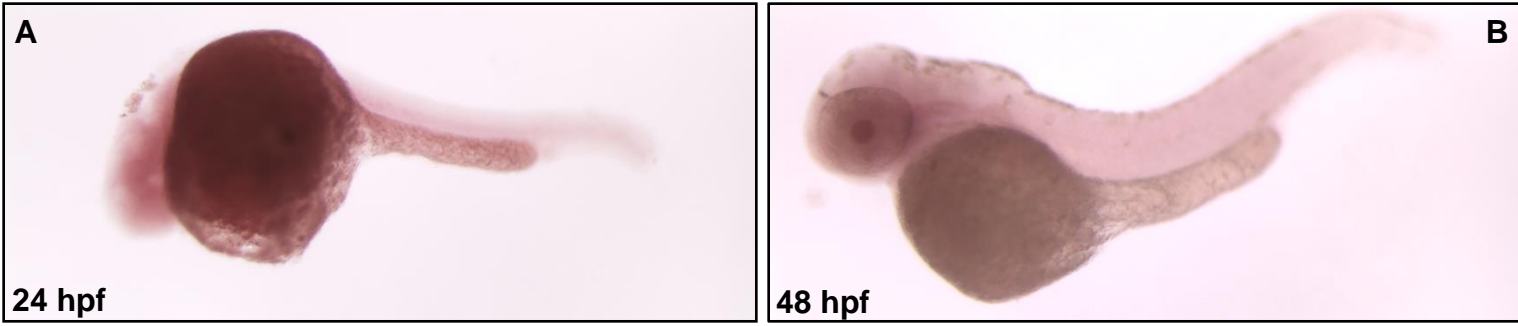
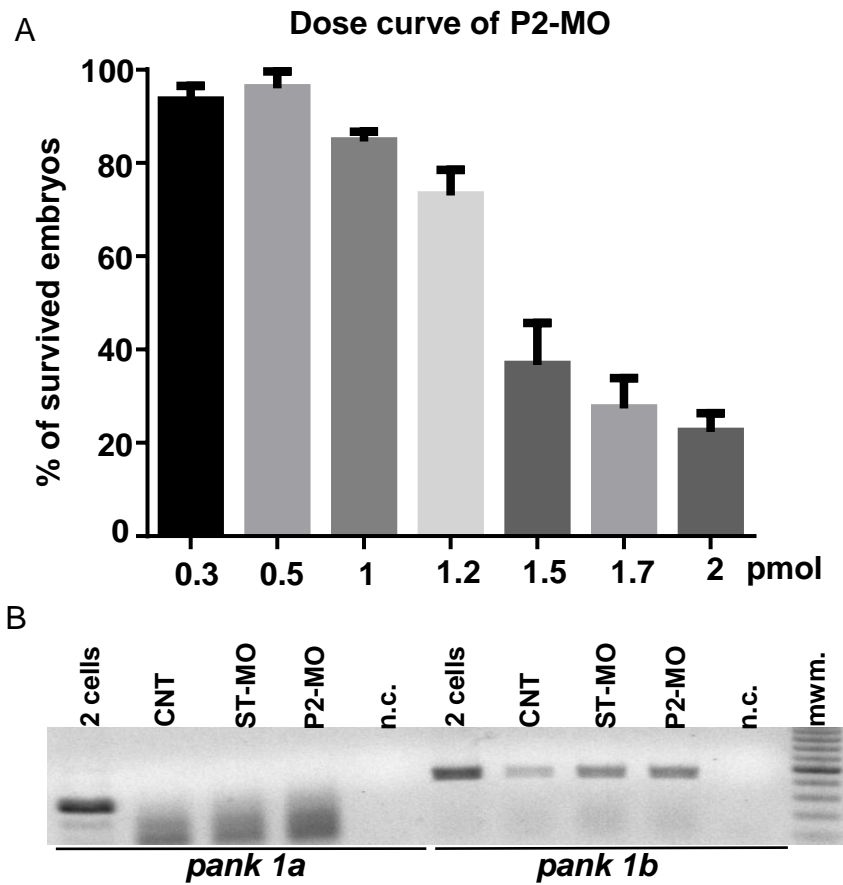
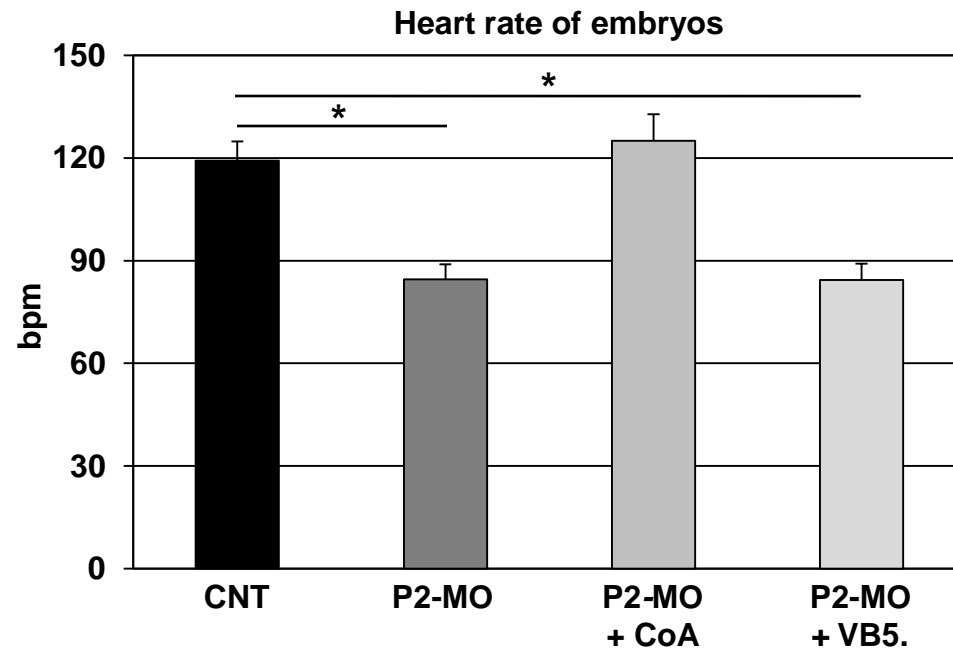


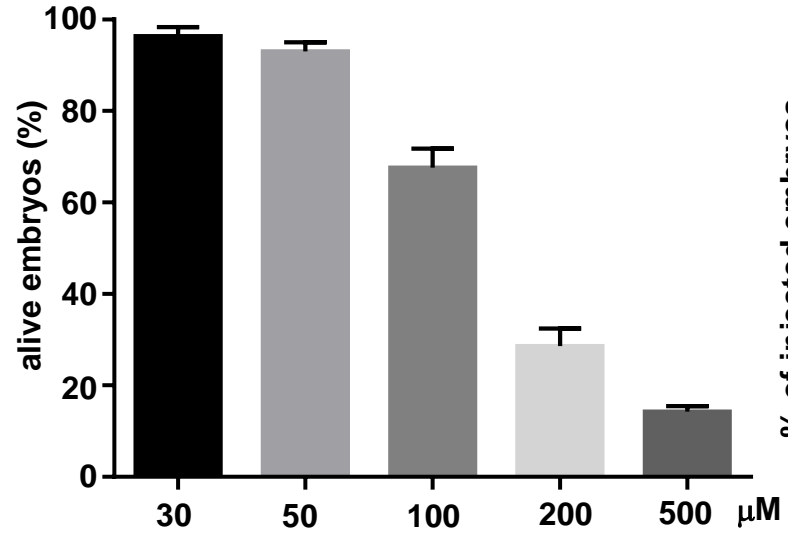
WISH with *pank2* sense probe



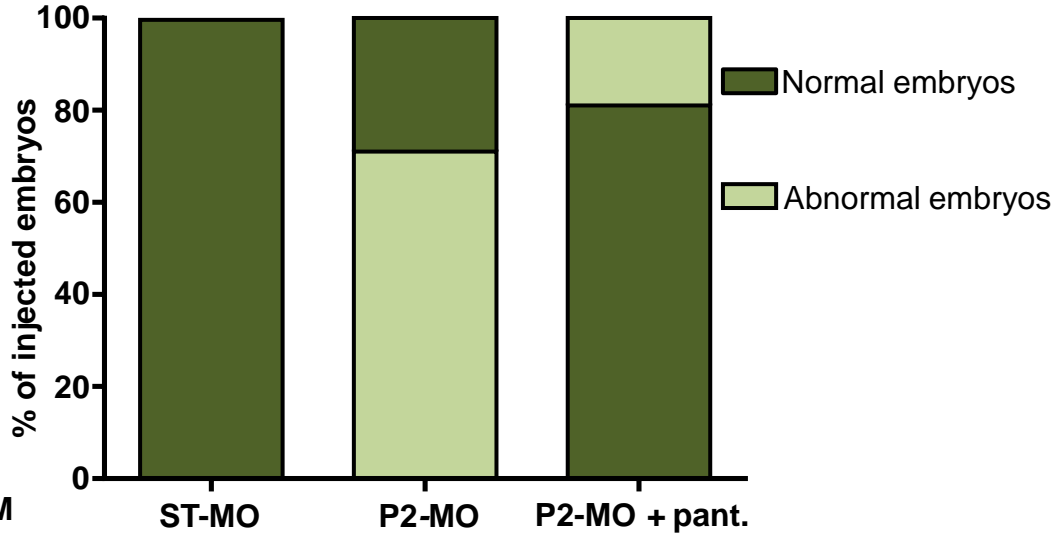




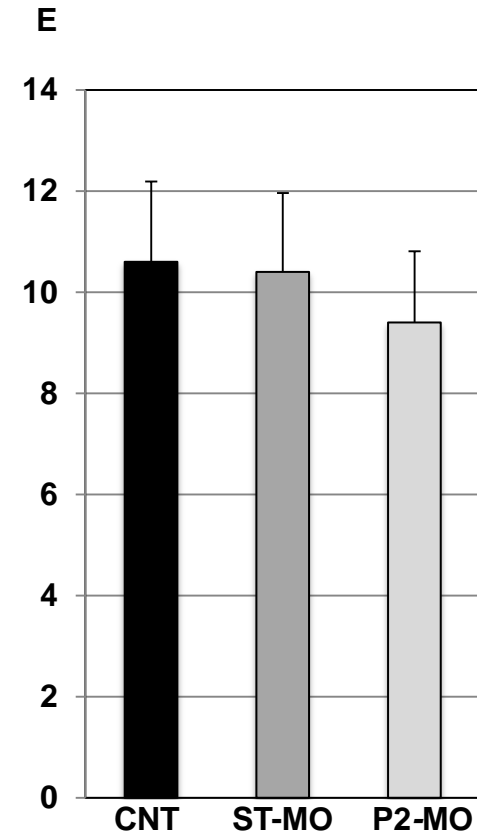
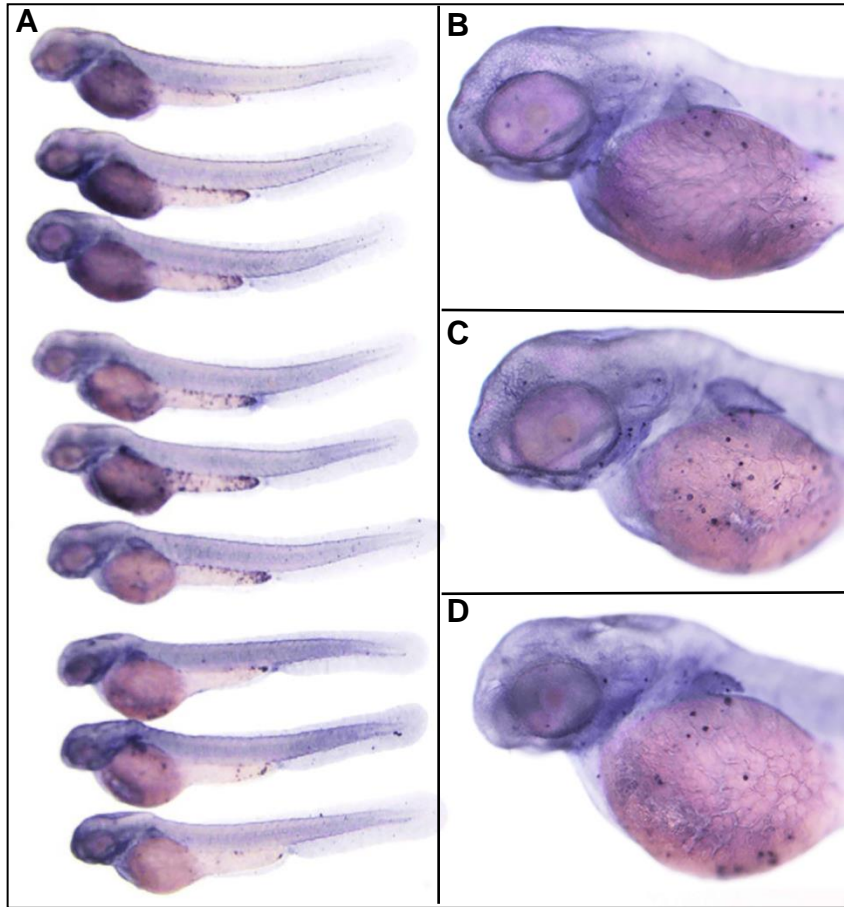
Pantethine dose curve

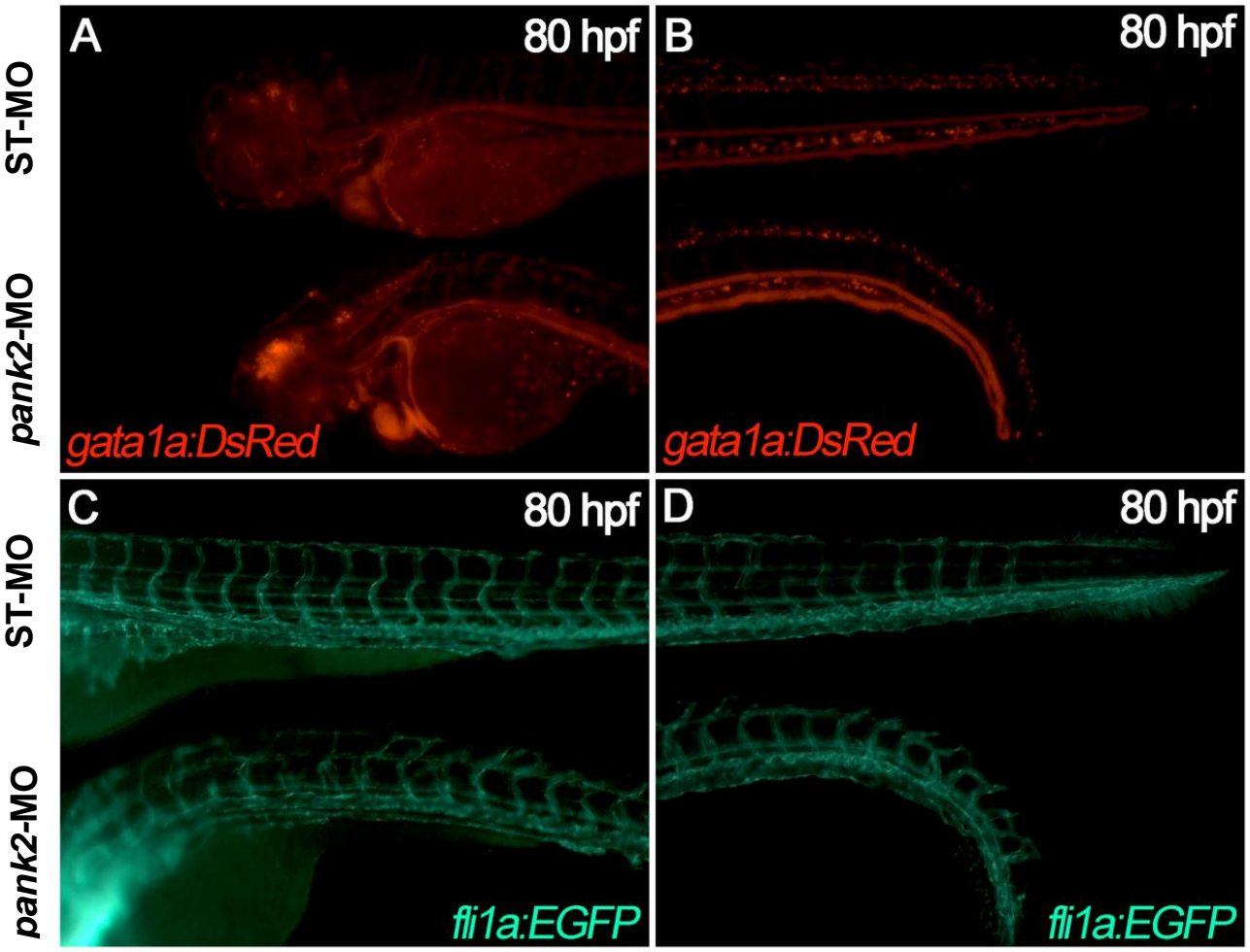


Rescue of P2-MO-injected embryos by pantethine









Organism	Abbreviation	Protein	Accession n.
<i>Homo sapiens</i>	Hsa	PANK1	NP_683878
<i>Homo sapiens</i>	Hsa	PANK2	NP_705902
<i>Homo sapiens</i>	Hsa	PANK3	NP_078870
<i>Homo sapiens</i>	Hsa	PANK4	NP_060686
<i>Mus musculus</i>	Mmu	PANK1	NP_001107811
<i>Mus musculus</i>	Mmu	PANK2	NP_705721
<i>Mus musculus</i>	Mmu	PANK3	NP_666074
<i>Mus musculus</i>	Mmu	PANK4	NP_766578
<i>Gallus gallus</i>	Gga	PANK1	XP_421664
<i>Gallus gallus</i>	Gga	PANK2	XP_420873
<i>Gallus gallus</i>	Gga	PANK3	XP_414502
<i>Gallus gallus</i>	Gga	PANK4	NP_001231841
<i>Danio rerio</i>	Dre	Pank1a	NP_998645
<i>Danio rerio</i>	Dre	Pank1b	NP_001077310
<i>Danio rerio</i>	Dre	Pank2	NP_001074075
<i>Danio rerio</i>	Dre	Pank4	NP_956809
<i>Drosophila melanogaster</i>	Dme	fumble	NP_524870
<i>Tricomonas vaginalis</i>	Tva	fumble	XP_001290292

Table ST1. List of amino acid sequences used for multiple alignment (only PANK2 polypeptides) and phylogenetic analysis.

Name	Primer sequence (5'→3')
P2-MO	TAACAAGATGGTTCACCTACGCGGC
ST-MO	CCTCTTACCTCAGTTACAATTTATA
P1	TCCATGAAGTTGCTCGCGTA
P2	CAGCTCAGGATGGGTTTGGT
P3	ACCTGCTAGCATGGAGCTGAACGGCTTC
P4	ACCTGGATCCTCACTTGTTCATCGTCATCCTTGTAATCGGATGG GTTTGGTAGTTCCAA
P5	ATGGAGCTGAACGGCTTCC
P6	TCAGGATGGGTTTGGTAGTTCC
P7	GCTGGATGAGCTGGAGTGTT
P8	AACACTCCAGCTCATCCAGC
P9	ACCTGGATCCACCATGGAGCTGAACGGCTTC
P10	ACCTTCTAGATCAGGATGGGTTTGGTAGTTC
P11	CGAGGGATGTACGGAGAAGC
P12	GCCAATGTTGACAAGCAGCA
A1	CGAGCAGGAGATGGGAACC
A2	CAACGGAAACGCTCATTGC
EF1	GAGAAGTTCGAGAAGGAAGC
EF2	CGTAGTATTTGCTGGTCTCG

Table ST2. List of the primers and their sequences.