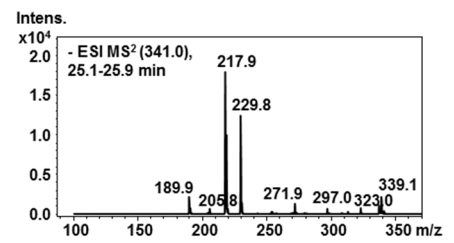
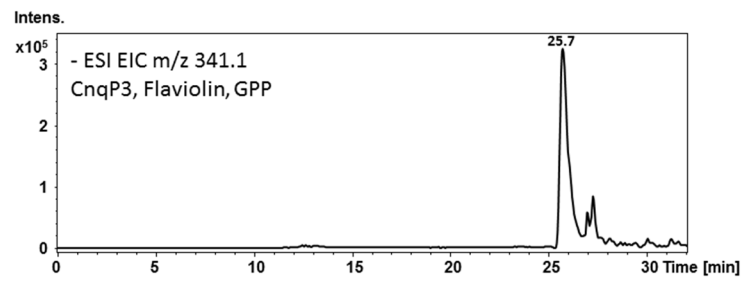
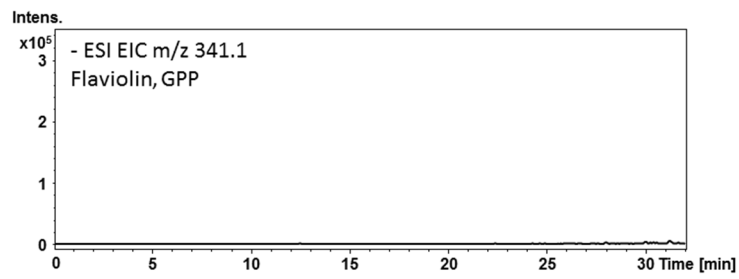
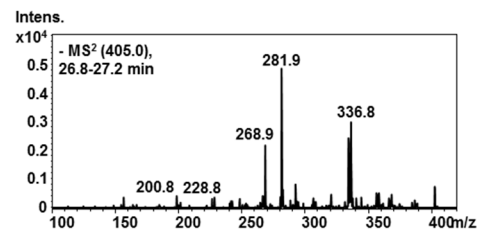
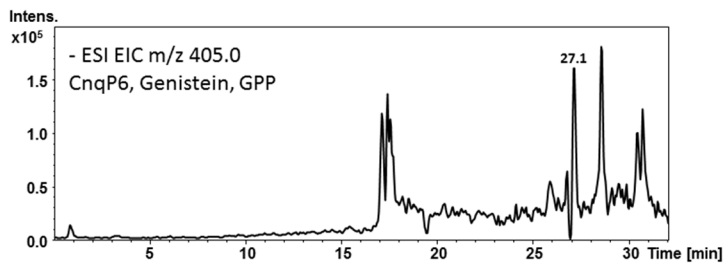
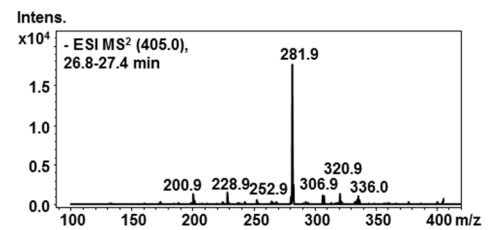
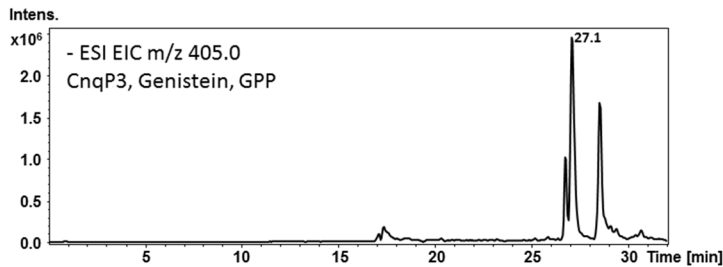
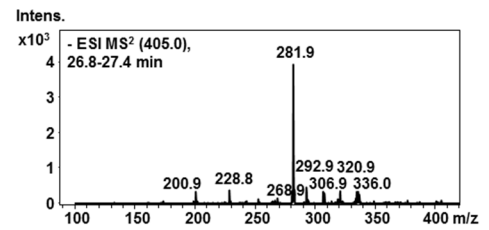
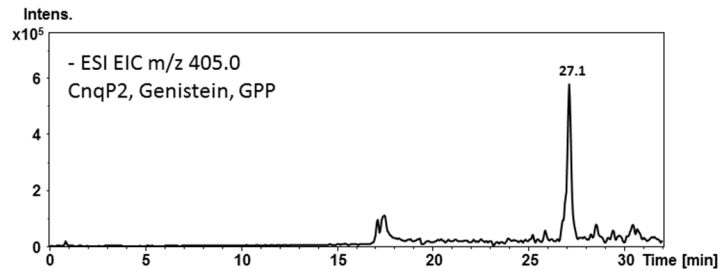
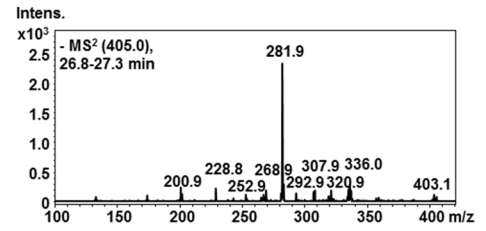
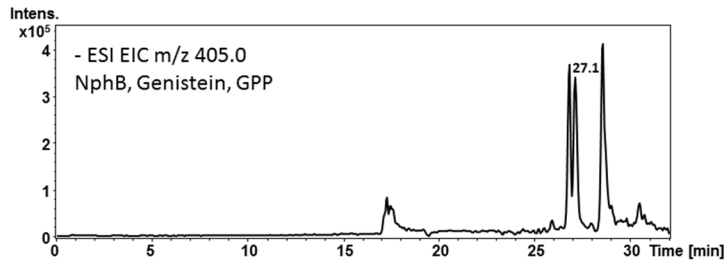
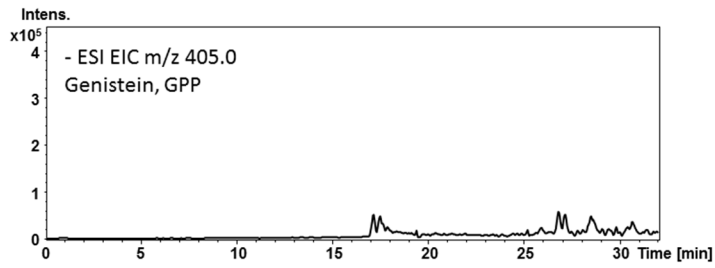
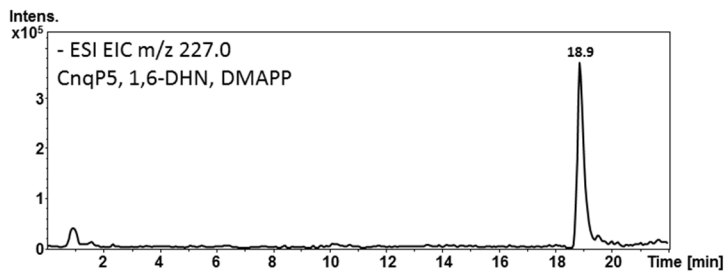
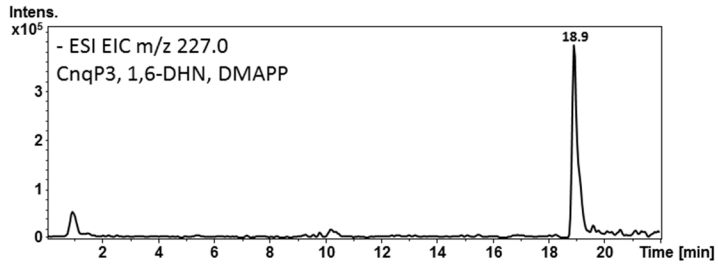
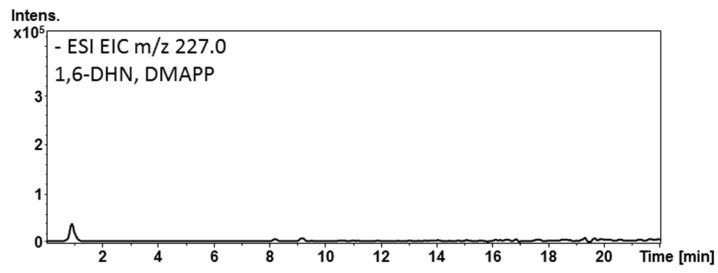


A

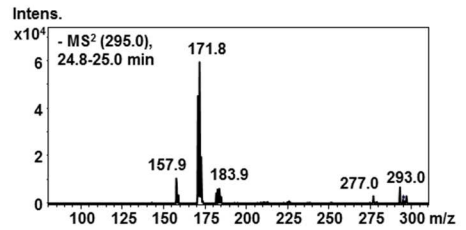
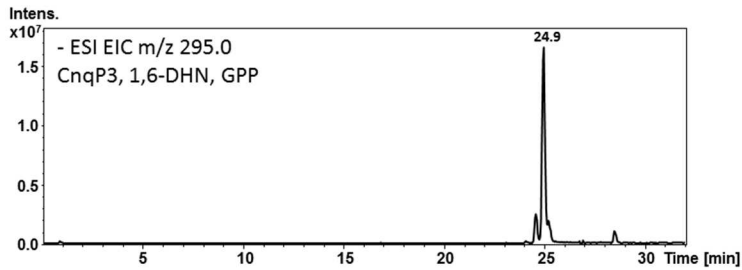
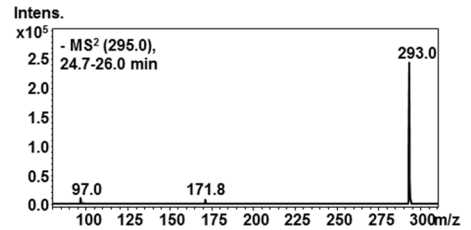
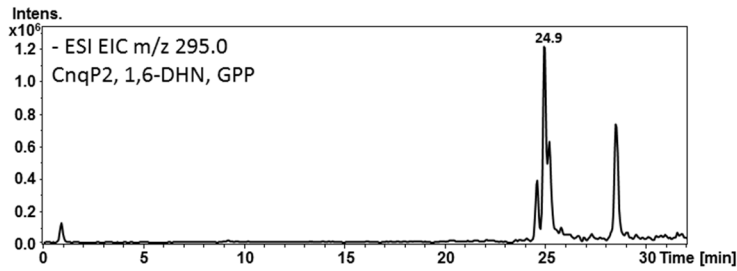
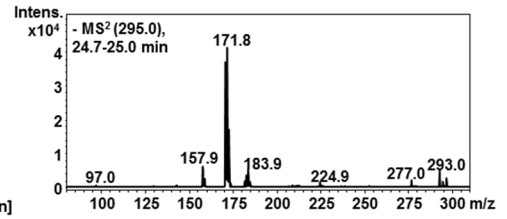
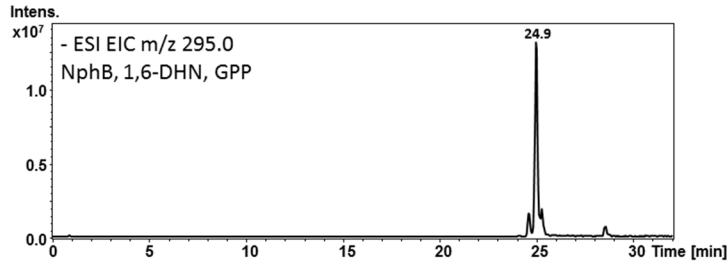
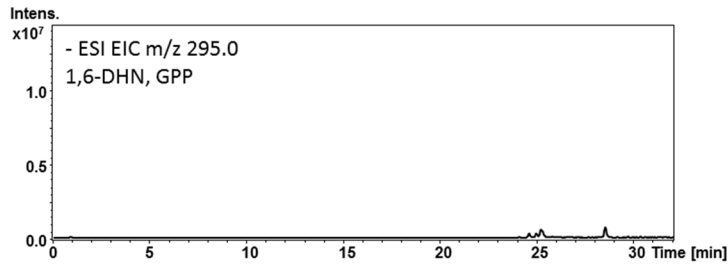


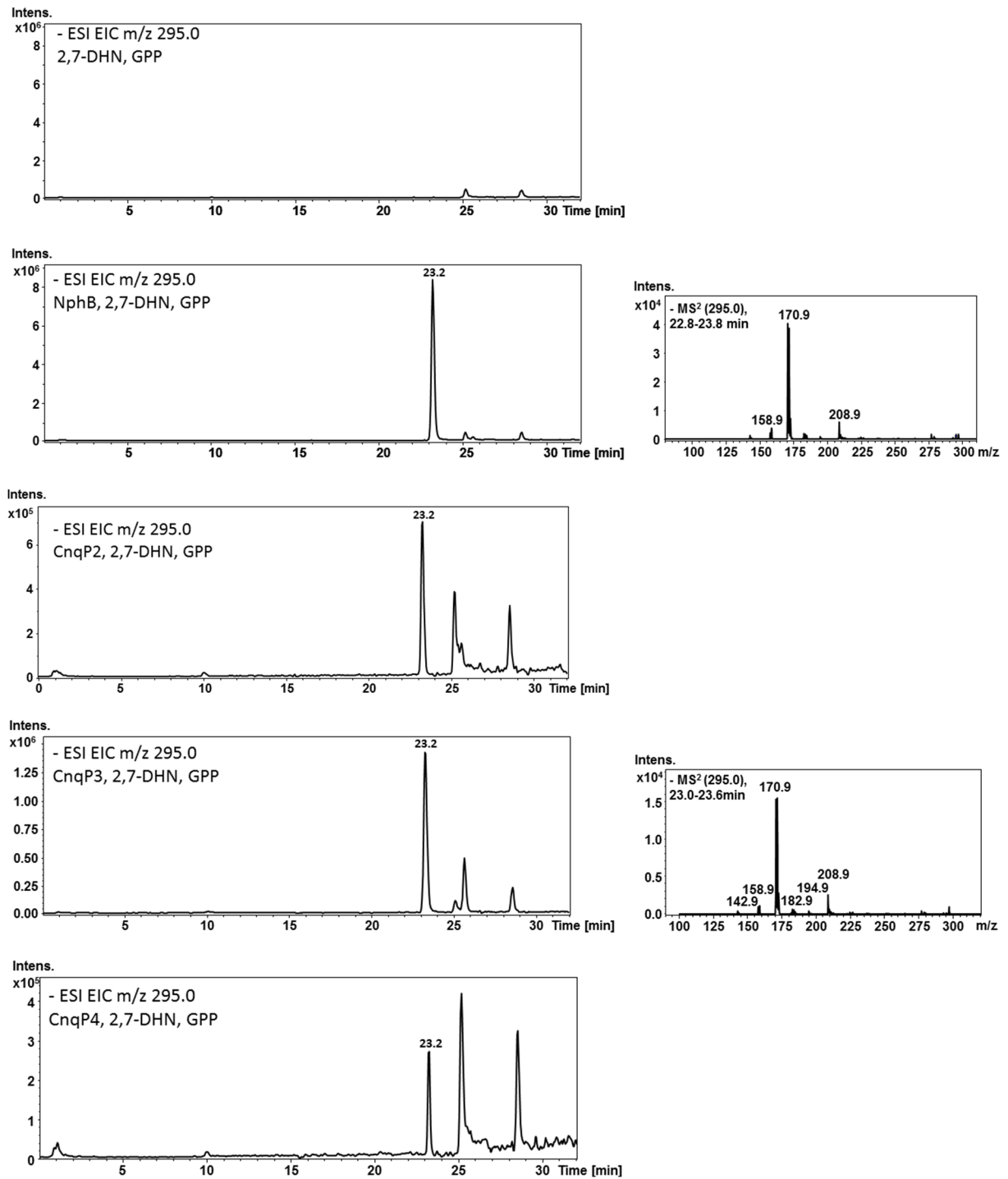
B

C



D



E

S3 Fig. MS analysis of enzymatic products. Extracted ion chromatograms (EICs) and MS/MS spectra. **A** Reaction of flaviolin: Monoprenylated product with GPP, m/z 341.1 [M-H]⁻. **B** Reaction of genistein: Monoprenylated product with GPP, m/z 405.0 [M-H]⁻. **C** Reaction of 1,6-dihydroxy naphthalene (1,6-DHN): Monoprenylated product with DMAPP, m/z 227.0 [M-H]⁻. **D** Reaction of 1,6-dihydroxynaphthalene (1,6-DHN): Monoprenylated product with GPP, m/z 295.0 [M-H]⁻. **E** Reaction of 2,7-dihydroxynaphthalene (2,7-DHN): Monoprenylated product with GPP, m/z 295.0 [M-H]⁻.