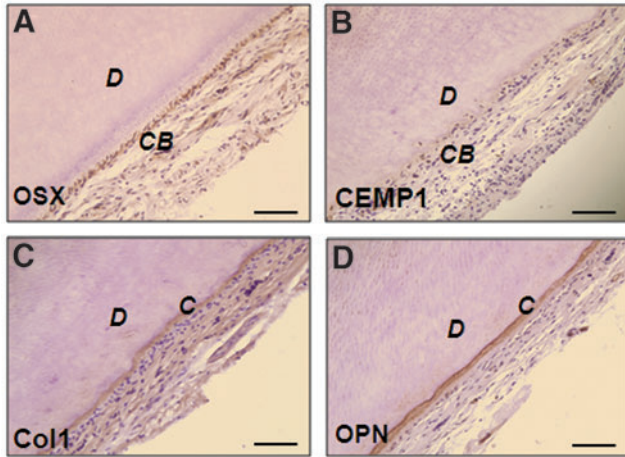


## Supplementary Data



**SUPPLEMENTARY FIG. S1.** Immunohistochemical phenotype of the cementum and cementoblasts of human tooth root. **(A)** OSX expression in the cementoblasts. **(B)** CEMP1 expression in the cementoblasts. **(C)** Col1 expression in the cementum. **(D)** OPN expression in the cementum. D, dentin; C, cementum; CB, cementoblasts. Scale bar = 80  $\mu$ m. CEMP1, cementum protein 1; Col1, type 1 collagen; OPN, osteopontin; OSX, osterix.