

SUPPLEMENTAL DATA

T cell responses are elicited against Respiratory Syncytial Virus in the absence of signalling through TLRs, RLRs and IL-1R/IL-18R

Michelle Goritzka¹, Catherine Pereira¹, Spyridon Makris¹, Lydia R. Durant¹
and Cecilia Johansson*¹

Figure S1. Flow cytometry gating strategy for T cells during RSV infection. A) Representative plots of non-debris (SSC-A vs FSC-A), singlet (FSC-W vs FSC-A and SSC-W vs SSC-A), live (Dead cells vs SSC-A) lung cells analyzed for expression of CD3 and CD19. CD3⁺ cells were further gated on CD4 and CD8 expression. B) Representative plots of expression of M Tetramer and CD8 on CD3⁺ CD19⁻ lung cells from wt and MTM^{-/-} mice examined on day 0 (PBS) and day 8 post RSV infection.

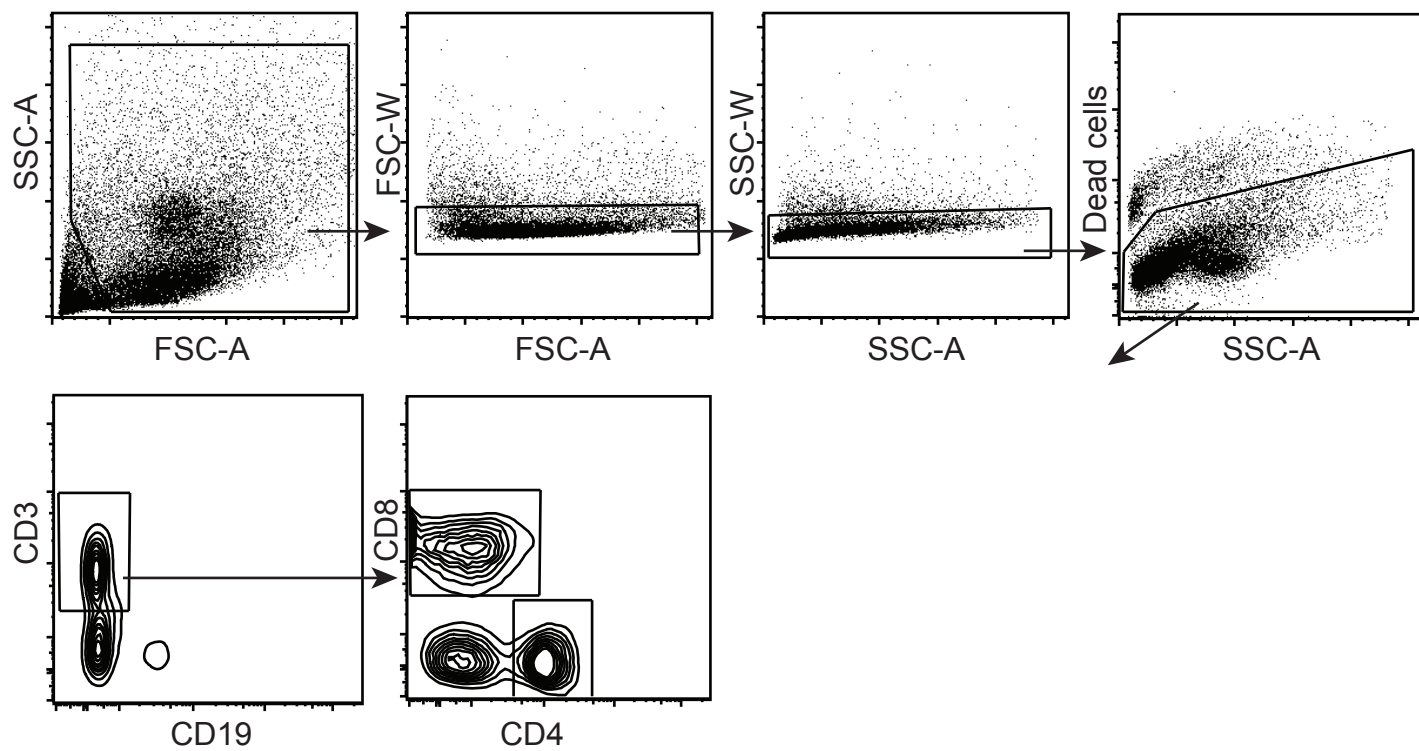
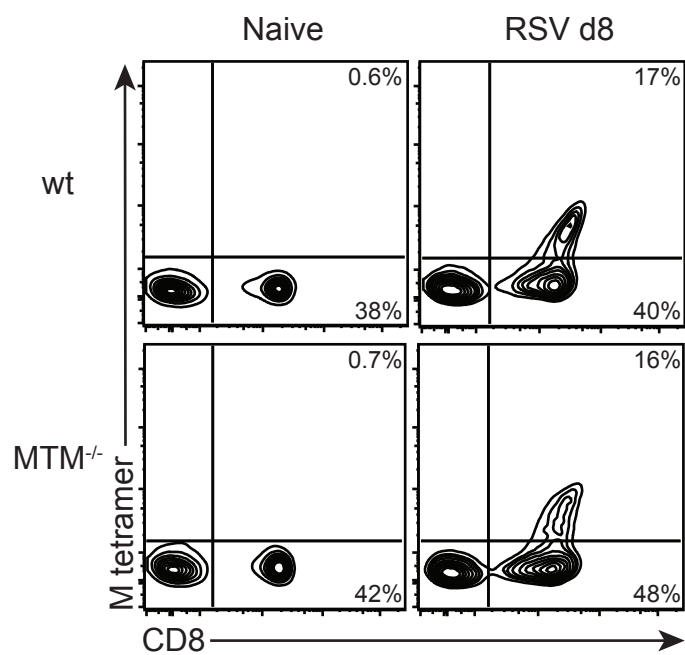
A**B**

Figure S1. Goritzka et al