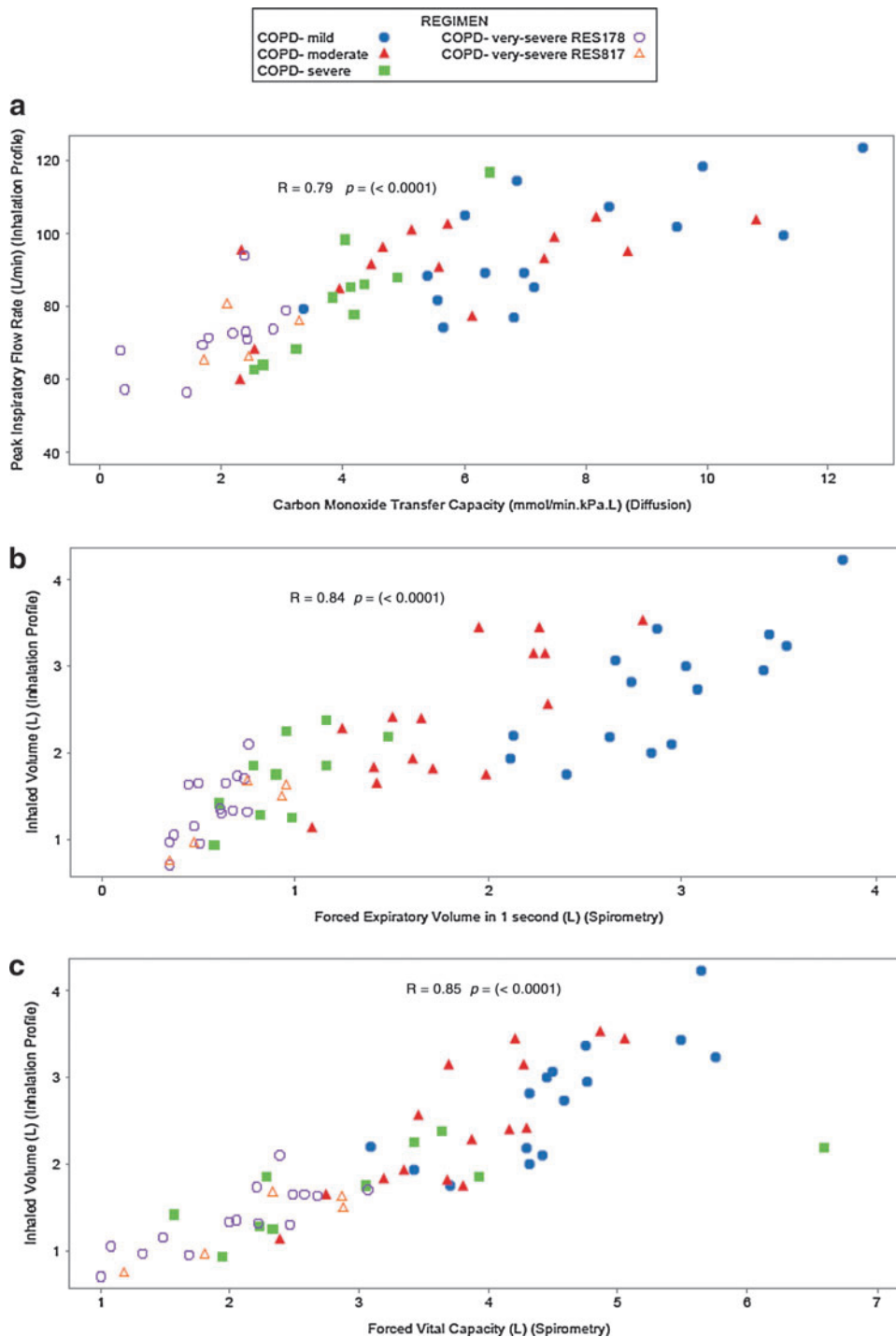
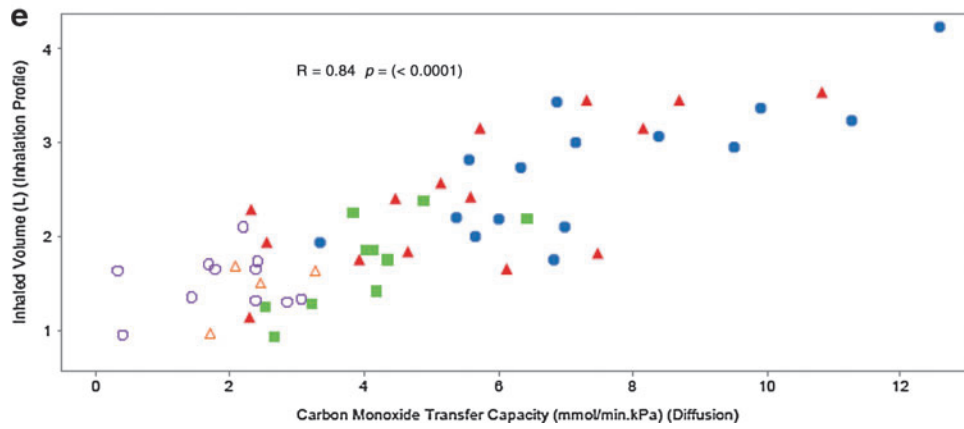
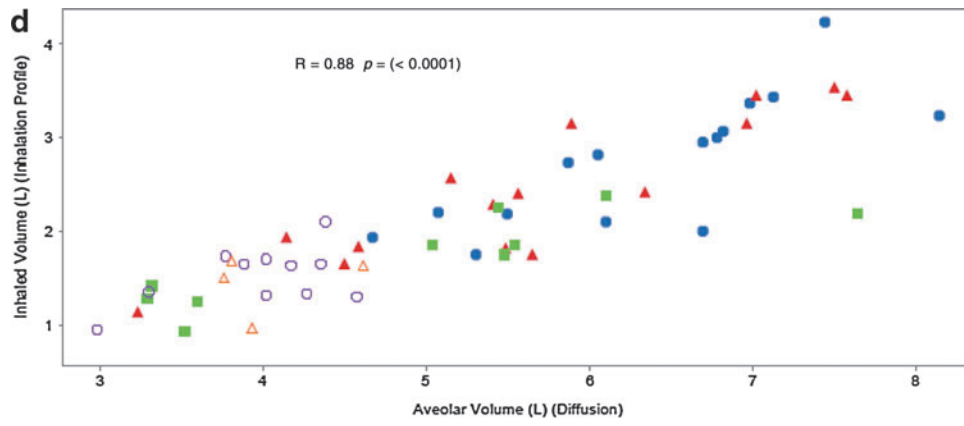


Supplementary Data



SUPPLEMENTARY FIG. S1. Correlation figures for COPD patients only for (a) PIFR (via the ELLIPTA DPI) versus DLCO, (b) inhaled volume (via the ELLIPTA DPI) versus FEV₁ (spirometry), (c) inhaled volume (via the ELLIPTA DPI) versus FVC (spirometry), (d) inhaled volume (via the ELLIPTA DPI) versus alveolar volume, and (e) inhaled volume (via the ELLIPTA DPI) versus DLCO. (All COPD patients). COPD, chronic obstructive pulmonary disease; DLCO, diffusing capacity of the lung for carbon monoxide; DPI, dry powder inhaler; FEV₁, forced expiratory volume in 1 second; FVC, forced vital capacity; PEFR, peak expiratory flow rate; PIFR, peak inspiratory flow rate.



SUPPLEMENTARY FIG. S1. (Continued).