

Additional file. Comparison of Tasmanian devil microbiota between different geographic sites

(a) Pair-wise unweighted UniFrac distances between sample groups.

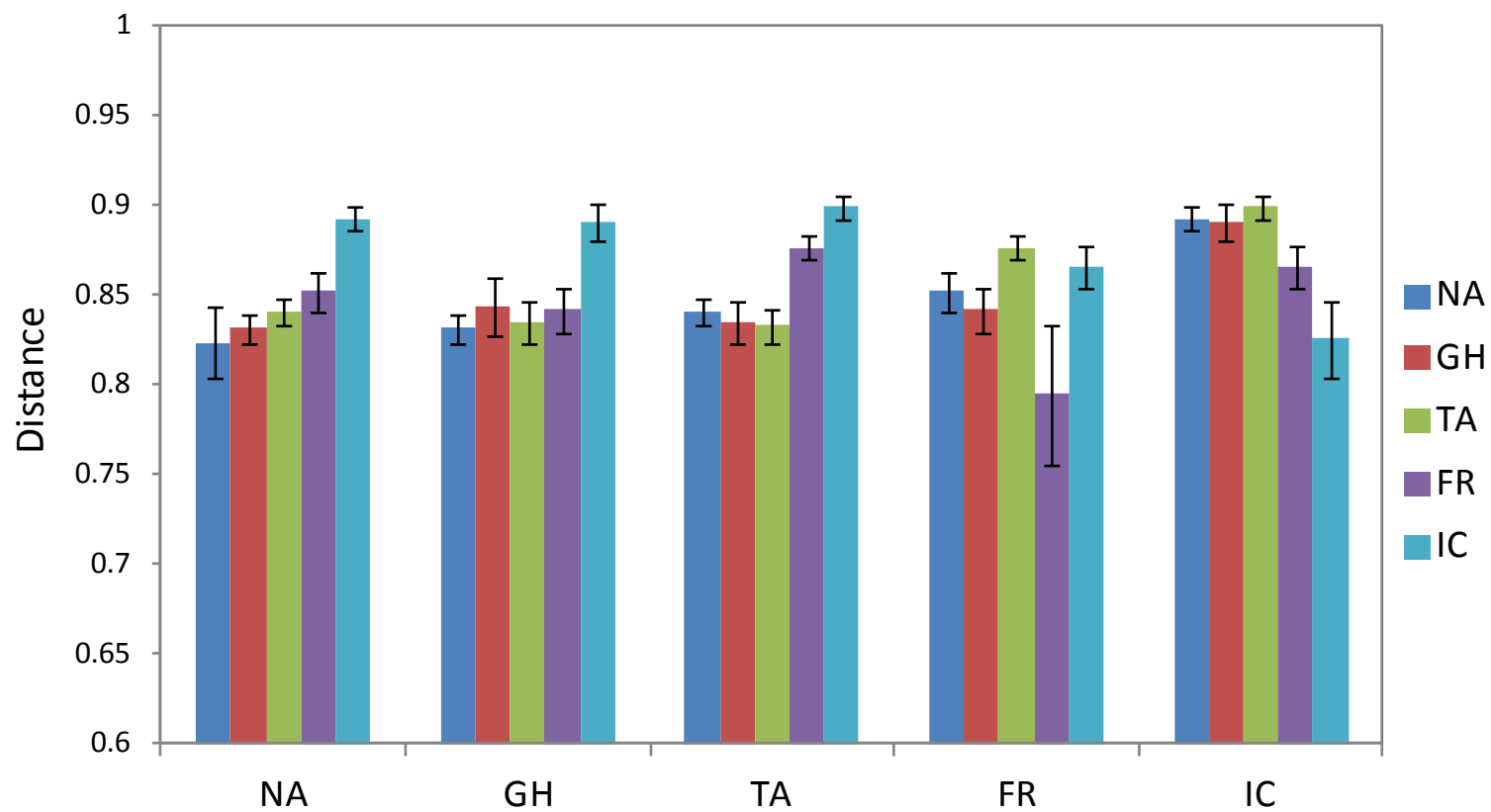
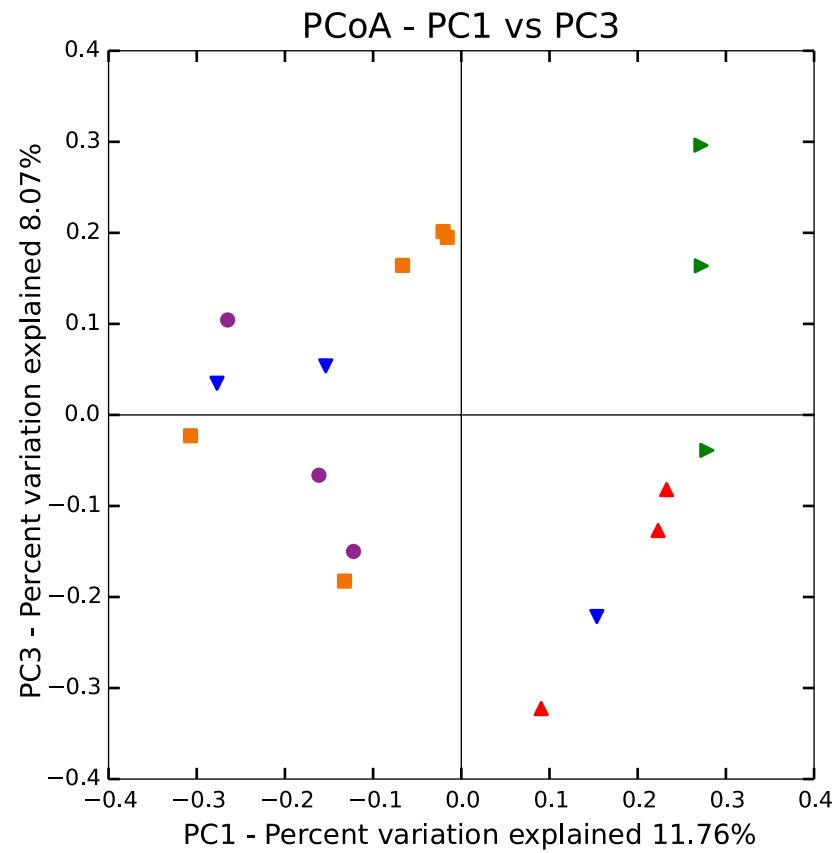
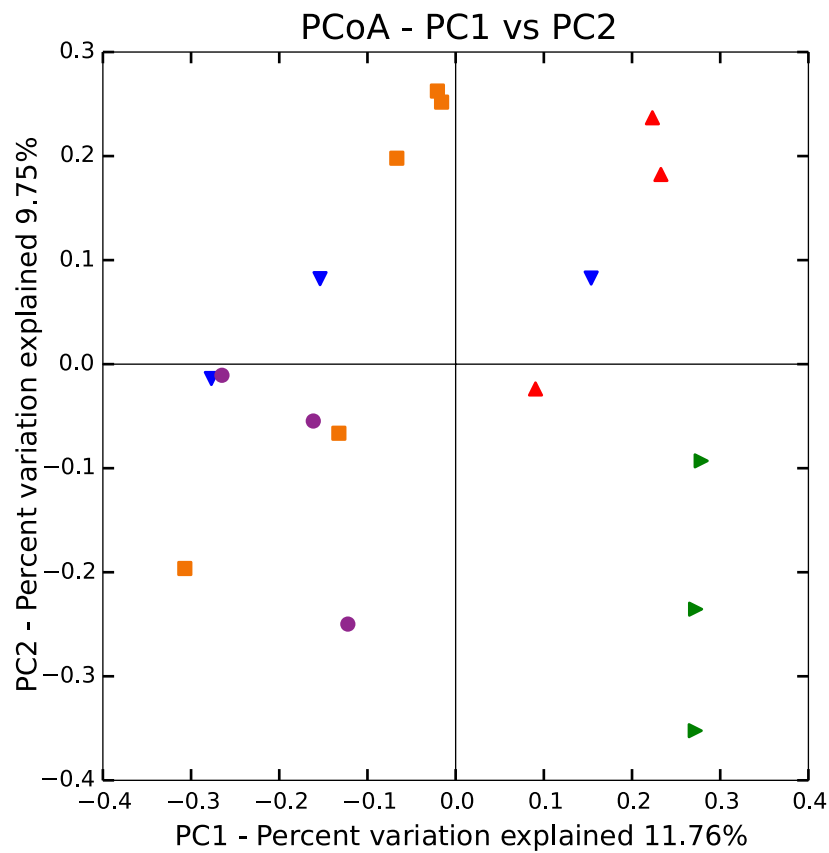
(b) PCoA analysis of unweighted UniFrac distances.

Page 2 - gut

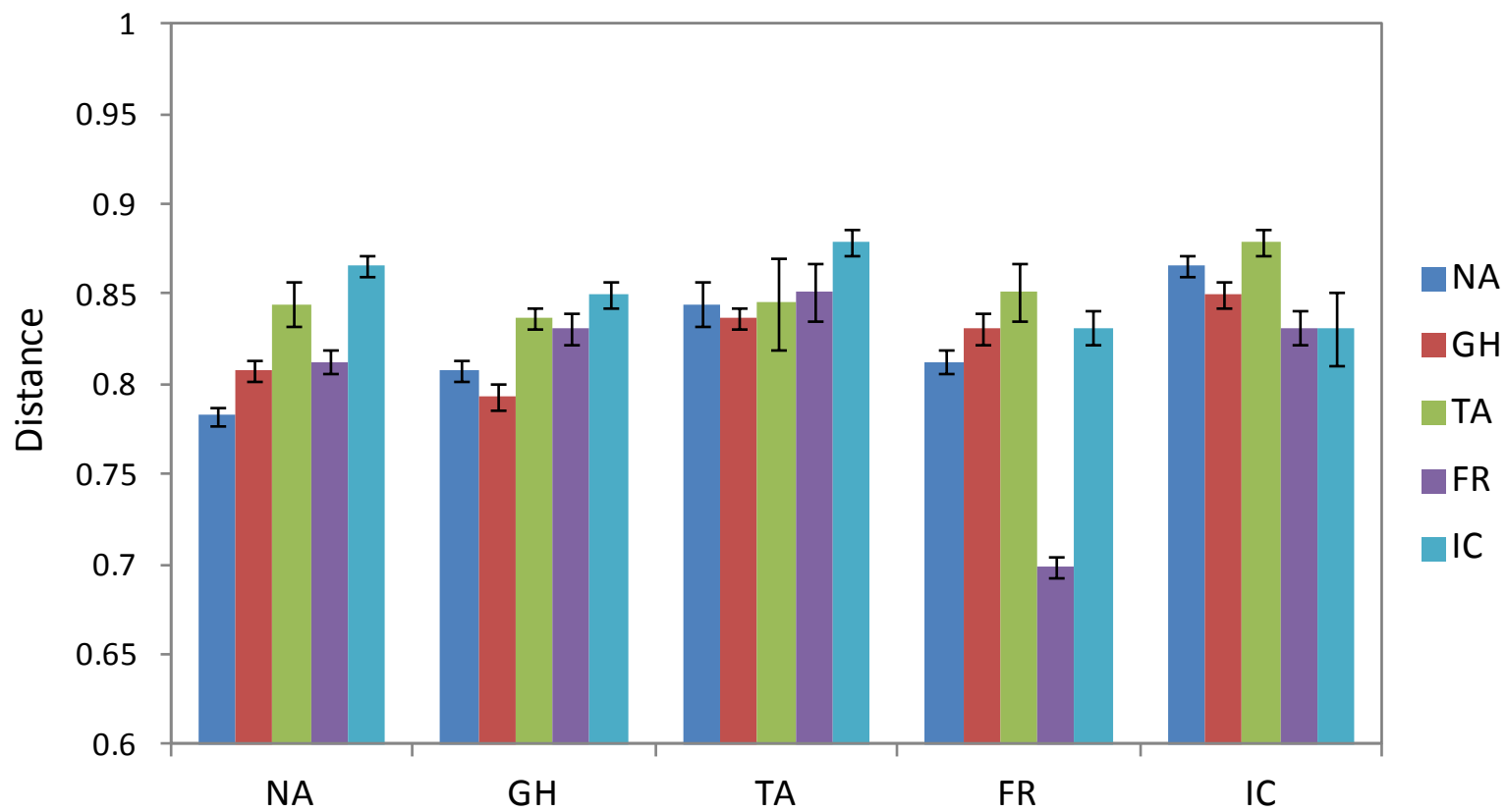
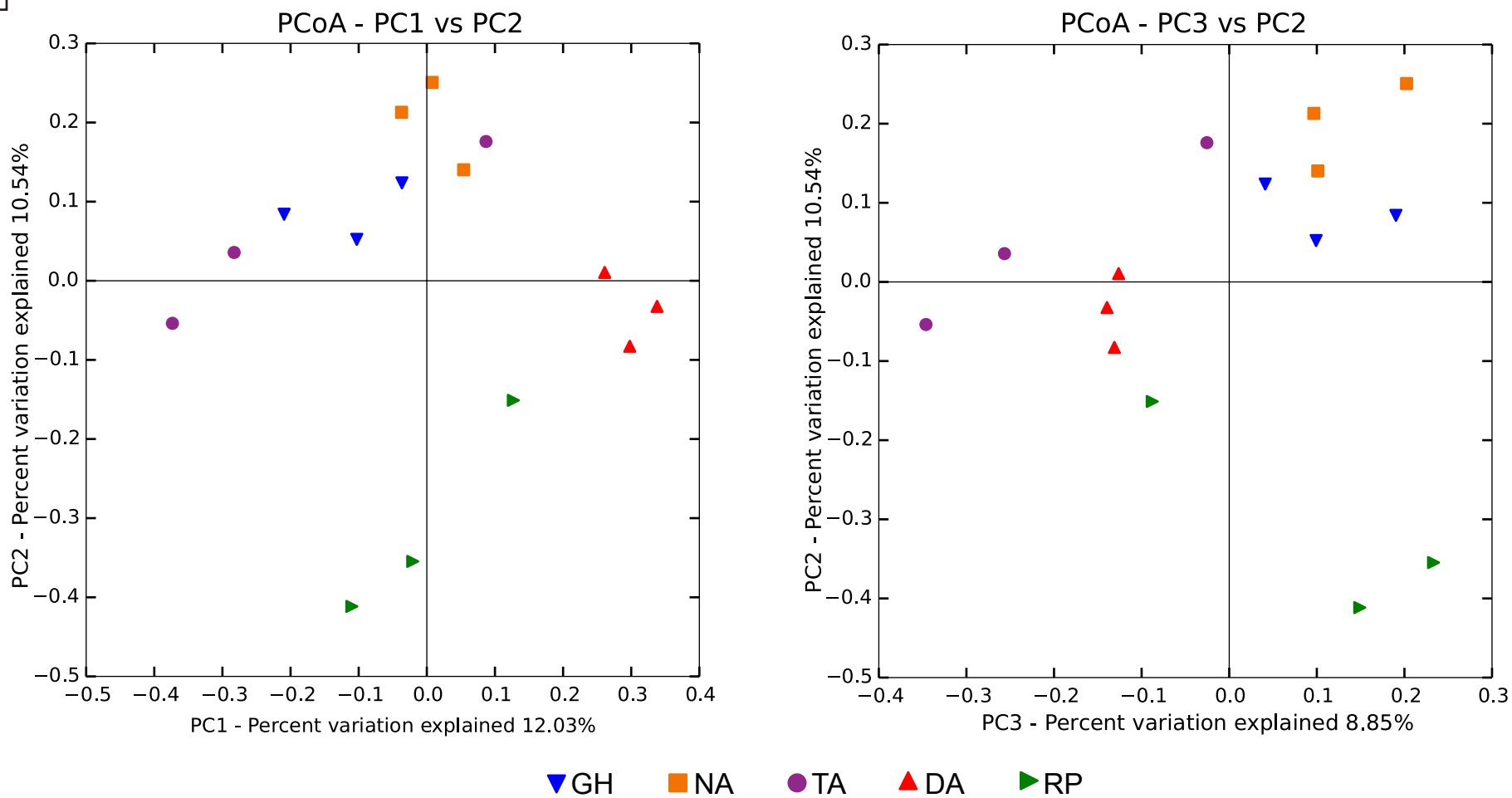
Page 3 - skin

Page 4 - pouch

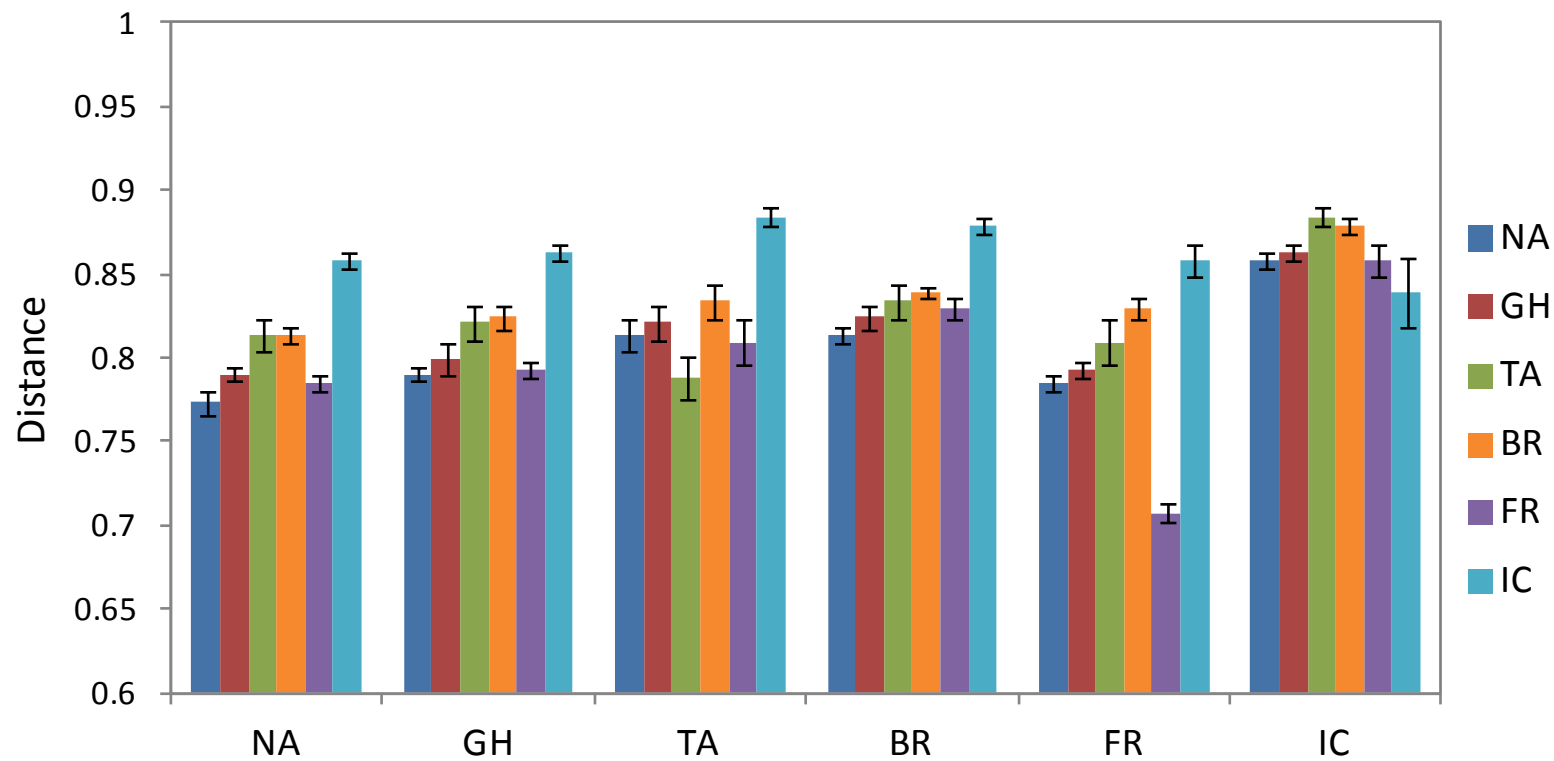
Page 5 - oral

a**b**

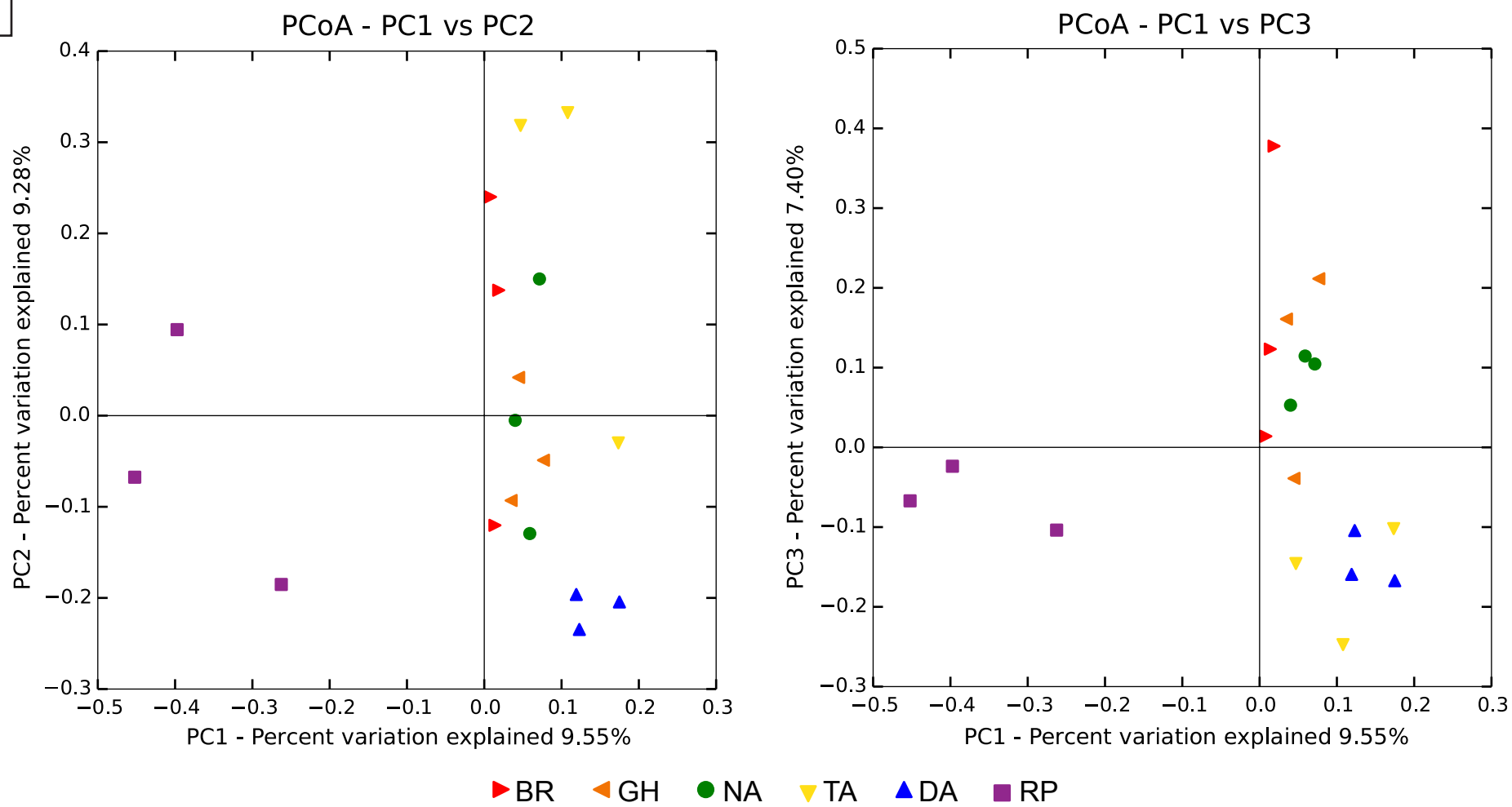
▼ GH ■ NA ● TA ▲ DA ► RP

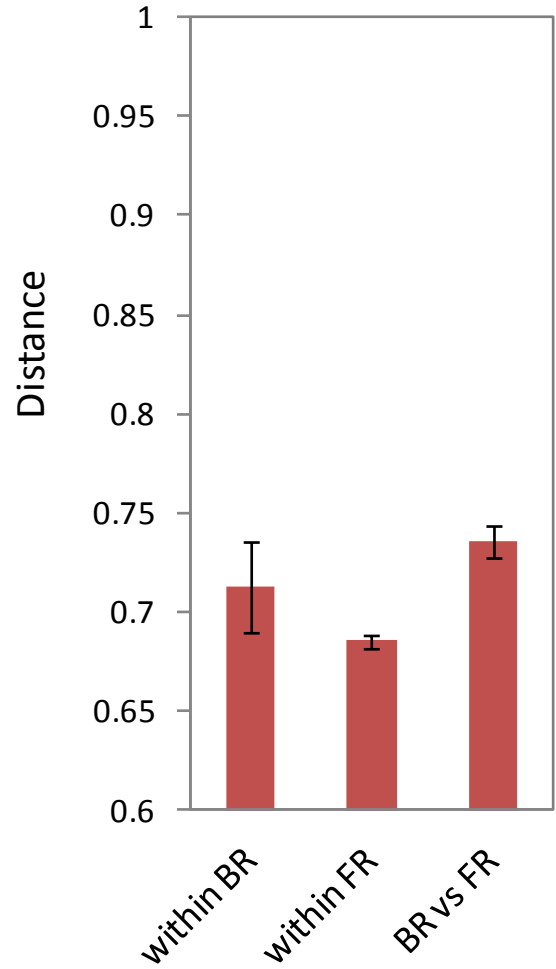
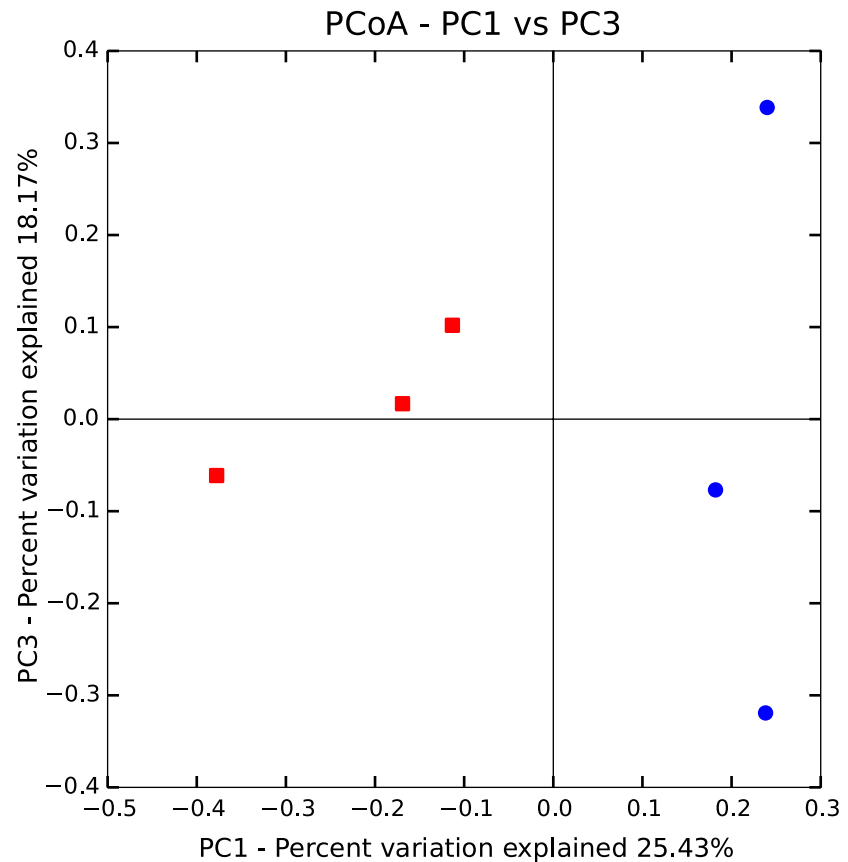
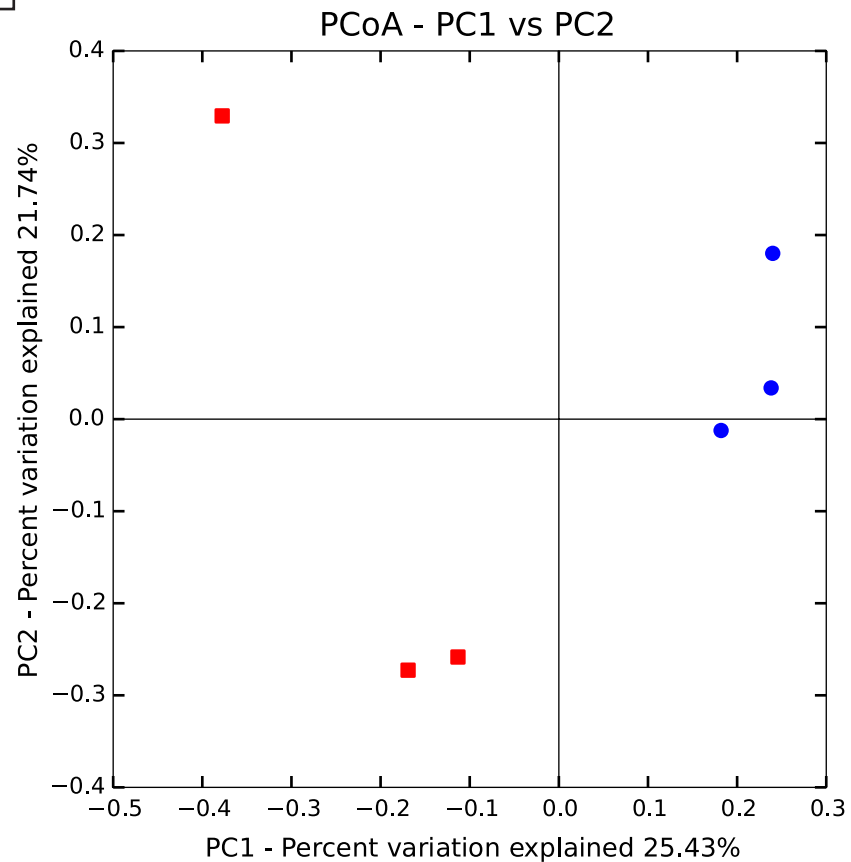
a**b**

a



b



a**b**

■ BR

● FR