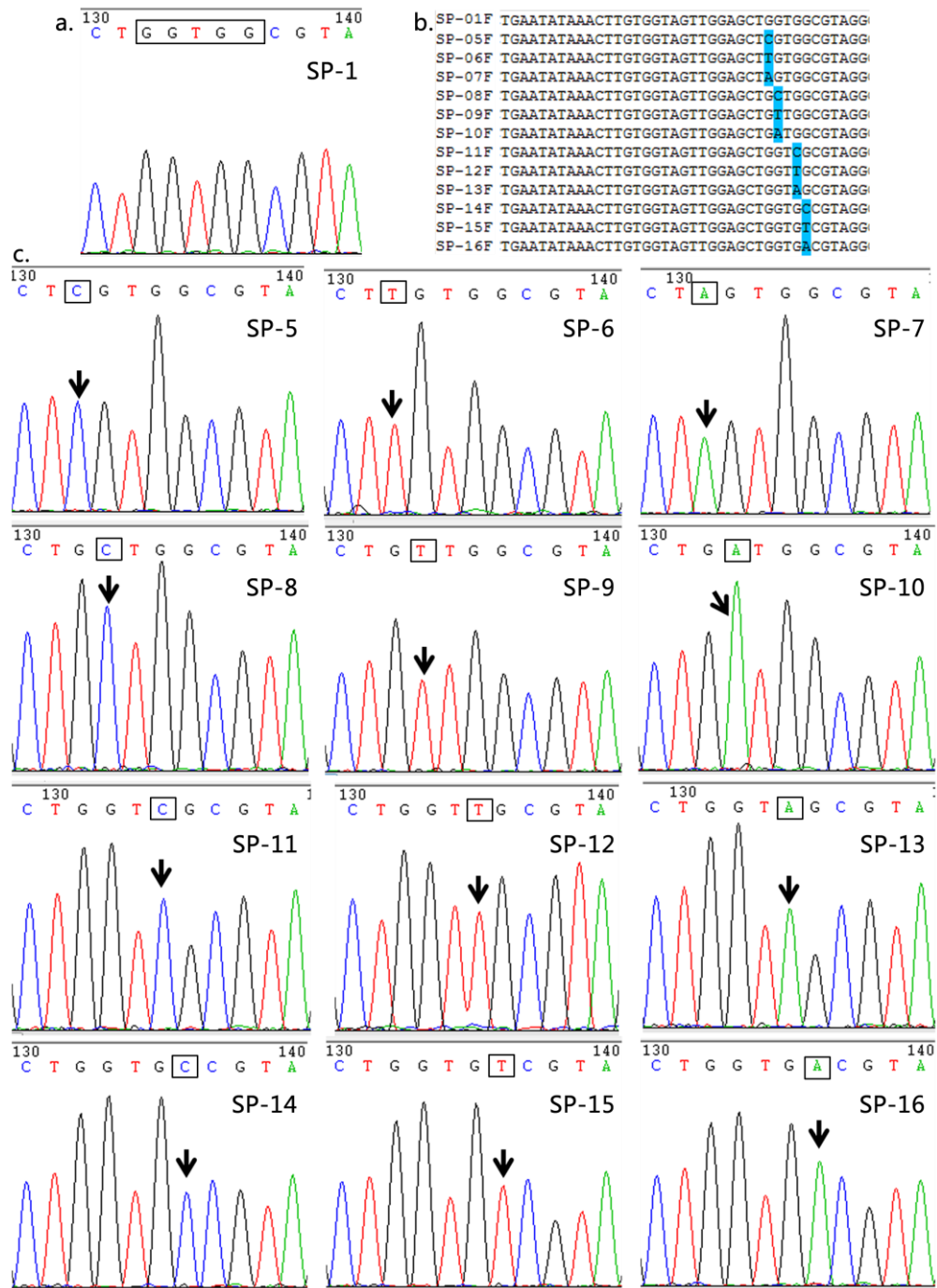


**Figure S1. Summary of the quality control (QC) plasmid used in this study**



Panel a shows the sequencing chromatogram of the WT-QC plasmid (termed SP-1 in the present study), in which the rectangle box in panel A shows the nine bases in wild-type *KRAS* codons 12 and 13. Panel B shows the sequence alignment results between WT-alleles and 12 MT-QC plasmids (termed SP-5 to -16). The blue color indicates the mutated bases in each QC plasmid compared with WT-alleles. Panel C showed the sequencing chromatogram of the 12 MT-QC plasmids, where the rectangles and arrows indicate the mutated bases and the corresponding chromatogram peaks, respectively.