

SUPPLEMENTAL MATERIAL

Title: IV thrombolysis in very severe and severe ischemic stroke: results from the SITS-ISTR registry.

Authors: Michael V Mazya, MD, PhD; Kennedy R Lees, MD, FRCP; David Collas, BSc, MB BS, FRCP; Viiu-Marika Rand, MD; Robert Mikulik, MD, PhD; Danilo Toni, MD, PhD; Nils Wahlgren, MD, PhD; Niaz Ahmed, MD, PhD.

Online Supplement Table e-1.

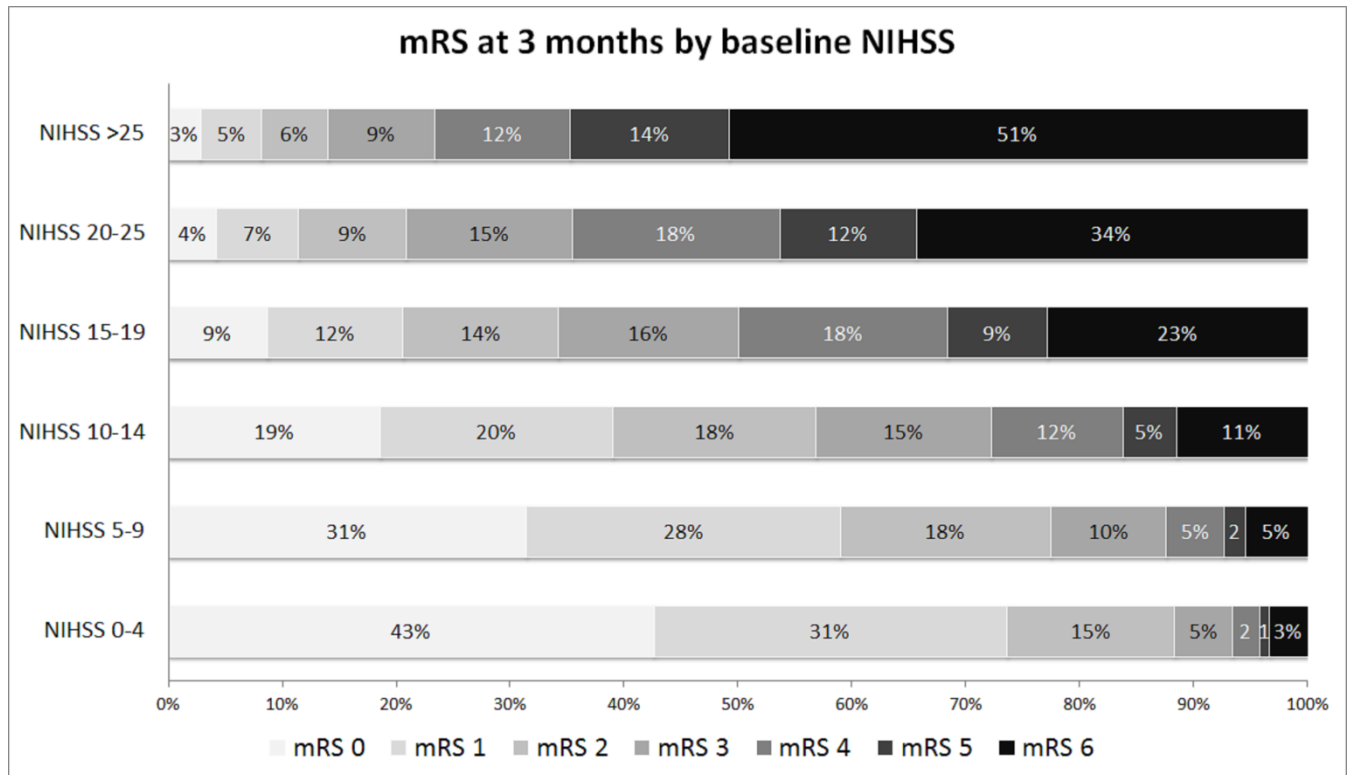
Comparison of outcomes between patients with available and missing data on stroke territory.

Characteristic or outcome	NIHSS ≥ 15 known territory n=4922	NIHSS ≥ 15 , missing territory n=15941	<i>P</i>
Any PH or PHr	508/4781 (10,6%)	1667/15030 (11,1%)	0,37
PH2 or PHr2	233/4781 (4,9%)	765/15030 (5,1%)	0,55
SICH SITS-MOST	118/4777 (2,5%)	373/15211 (2,5%)	0,94
SICH ECASS II	391/4673 (8,4%)	1315/14742 (8,9%)	0,24
SICH NINDS	518/4692 (11,0%)	1723/14799 (11,6%)	0,26
mRS 0-1	600/3492 (17,2%)	2145/12973 (16,5%)	0,36
mRS 0-2	1023/3492 (29,3%)	3654/12973 (28,2%)	0,19
mRS 0-3	1551/3492 (44,4%)	5611/12973 (43,4%)	0,22
Dead 3m	987/3529 (28,0%)	3673/13160 (27,9%)	0,95

Any PH or PHr: any parenchymal hemorrhage, local or remote, on any scan within 22-36 hours from treatment. PH2 or PHr2: local or remote parenchymal hemorrhage type 2. SICH: symptomatic intracerebral hemorrhage; SITS-MOST: Safe Implementation of Thrombolysis in Stroke Monitoring Study. ECASS II: European Cooperative Acute Stroke Study II; NINDS: National Institute of Neurological Diseases and Stroke; mRS: modified Rankin Scale at three months. 3m: within three months. All comparisons done using the Pearson Chi² test.

Supplemental Figure e-1 Legend

Frequency of functional outcomes and death at three months by stroke severity strata.



mRS: modified Rankin Scale.

Online Supplement Table e-2.

Frequency of PH and SICH by circulation territory and stroke severity.

ICH/SICH type	NIHSS >25, posterior	NIHSS >25, anterior	p
	n (%)	n(%)	
Any PH or PHr	3/72 (4,2%)	12/136 (8,2%)	0.22
PH2 or PHr2	1/72 (1.4%)	4/136 (2.9%)	0.49
SICH SITS-MOST	0/73 (0%)	0/134 (0%)	1.0
SICH ECASS II	6/72 (8.3%)	16/131 (12.2%)	0.39
SICH NINDS	6/72 (8.3%)	20/133 (15.0%)	0.17
	NIHSS 15-25, posterior	NIHSS 15-25, anterior	p
	n (%)	n (%)	
Any PH or PHr	27/338 (8.0%)	466/4235 (11.0%)	0.086
PH2 or PHr2	11/338 (3.3%)	217/4273 (5.1%)	0.13
SICH SITS-MOST	5/341 (1.5%)	113/4229 (2.7%)	0.18
SICH ECASS II	17/336 (5.1%)	352/4134 (8.5%)	0.027
SICH NINDS	18/337 (5.3%)	474/4150 (11.4%)	<0.001

Any PH or PHr: any parenchymal hemorrhage, local or remote, on any scan within 22-36 hours from treatment. PH2 or PHr2: local or remote parenchymal hemorrhage type 2. SICH: symptomatic intracerebral hemorrhage; SITS-MOST: Safe Implementation of Thrombolysis in Stroke Monitoring Study. ECASS II: European Cooperative Acute Stroke Study II; NINDS: National Institute of Neurological Diseases and Stroke; All comparisons done using the Pearson Chi² test.