

APPENDIX

Appendix Table 1: Estimated Impact of the 2011 Coding Change on Payments (full model)

<i>Parameter</i>	<i>Estimate</i>	<i>% Change</i>	<i>SE</i>	<i>p</i>
<i>CT of the abdomen or of the pelvis (the reference group)</i>				
Intercept	6.0418	-	0.0087	<.0001***
Slope	0.0013	+ 0.13 %	0.0004	0.0017**
Change in intercept in 2011	- 0.0055	- 0.55 %	0.0097	0.5735
Change in slope in 2011	0.0033	+ 0.33 %	0.0013	0.0089**
<i>CT of the abdomen and pelvis (w.r.t. the reference group)</i>				
Intercept	0.5665	+ 76.21 %	0.0057	<.0001***
Slope	- 0.0000	- 0.00 %	0.0004	0.9919
Change in intercept in 2011	- 0.2740	- 23.97 %	0.0104	<.0001***
Change in slope in 2011	- 0.0036	- 0.36 %	0.0014	0.0083**
<i>Health Plan Type</i>				
PPO (reference)	-	-	-	-
Comprehensive	- 0.0070	- 0.70 %	0.0048	0.1448
EPO	- 0.0183	- 1.82 %	0.0061	0.0026**
HMO	- 0.0631	- 6.12 %	0.0028	<.0001***
POS	- 0.3314	- 28.21 %	0.0029	<.0001***
CDHP	- 0.3637	- 30.49 %	0.0041	<.0001***
HDHP	- 0.2993	- 25.87 %	0.0082	<.0001***
n/a	- 0.1105	- 10.46 %	0.0058	<.0001***
<i>State</i>				
Massachusetts (reference)	-	-	-	-
Alabama	- 0.0642	- 6.22 %	0.0080	<.0001***
Alaska	0.7908	+ 120.52 %	0.0317	<.0001***
Arizona	- 0.3889	- 32.22 %	0.0101	<.0001***
Arkansas	- 0.4509	- 36.29 %	0.0114	<.0001***
California	- 0.1974	- 17.91 %	0.0084	<.0001***
Colorado	- 0.0545	- 5.31 %	0.0125	<.0001***
Connecticut	- 0.1145	- 10.82 %	0.0099	<.0001***
Delaware	- 0.3594	- 30.19 %	0.0112	<.0001***
Florida	- 0.0406	- 3.98 %	0.0078	<.0001***
Georgia	- 0.4215	- 34.40 %	0.0075	<.0001***
Hawaii	- 0.5742	- 43.68 %	0.0794	<.0001***
Idaho	0.0423	+ 4.32 %	0.0217	0.0514
Illinois	0.5187	+ 67.98 %	0.0076	<.0001***
Indiana	0.2068	+ 22.97 %	0.0090	<.0001***

<i>Parameter</i>	<i>Estimate</i>	<i>% Change</i>	<i>SE</i>	<i>p</i>
Iowa	0.0472	+ 4.83 %	0.0118	<.0001***
Kansas	- 0.0699	- 6.75 %	0.0115	<.0001***
Kentucky	- 0.1775	- 16.26 %	0.0099	<.0001***
Louisiana	- 0.0229	- 2.26 %	0.0102	0.0250*
Maine	0.1155	+ 12.25 %	0.0230	<.0001***
Maryland	- 0.7271	- 51.67 %	0.0092	<.0001***
Michigan	- 0.3273	- 27.91 %	0.0078	<.0001***
Minnesota	- 0.0313	- 3.09 %	0.0105	0.0027**
Mississippi	- 0.2557	- 22.56 %	0.0086	<.0001***
Missouri	- 0.2627	- 23.10 %	0.0086	<.0001***
Montana	0.6011	+ 82.41 %	0.0105	<.0001***
Nebraska	0.0777	+ 8.08 %	0.0189	<.0001***
Nevada	- 0.2123	- 19.13 %	0.0131	<.0001***
New Hampshire	0.2608	+ 29.79 %	0.0190	<.0001***
New Jersey	- 0.2243	- 20.10 %	0.0088	<.0001***
New Mexico	0.5883	+ 80.09 %	0.0103	<.0001***
New York	- 0.2977	- 25.74 %	0.0075	<.0001***
North Carolina	0.1270	+ 13.54 %	0.0084	<.0001***
North Dakota	- 0.1363	- 12.74 %	0.0328	<.0001***
Ohio	- 0.1331	- 12.46 %	0.0079	<.0001***
Oklahoma	0.3680	+ 44.49 %	0.0089	<.0001***
Oregon	0.5130	+ 67.02 %	0.0106	<.0001***
Pennsylvania	- 0.0724	- 6.99 %	0.0091	<.0001***
Puerto Rico	- 0.4103	- 33.65 %	0.0234	<.0001***
Rhode Island	- 0.4643	- 37.14 %	0.0172	<.0001***
South Carolina	0.3462	+ 41.37 %	0.0075	<.0001***
South Dakota	- 0.1456	- 13.55 %	0.0243	<.0001***
Tennessee	- 0.2960	- 25.62 %	0.0077	<.0001***
Texas	0.2660	+ 30.47 %	0.0072	<.0001***
Utah	0.0705	+ 7.30 %	0.0169	<.0001***
Vermont	- 0.1569	- 14.52 %	0.0301	<.0001***
Virgin Islands	0.1153	+ 12.22 %	0.2708	0.6701
Virginia	- 0.1457	- 13.56 %	0.0101	<.0001***
Washington	- 0.0288	- 2.84 %	0.0085	0.0007***
Washington, DC	- 0.2265	- 20.27 %	0.0502	<.0001***
West Virginia	0.3611	+ 43.49 %	0.0140	<.0001***
Wisconsin	0.5182	+ 67.90 %	0.0095	<.0001***
Wyoming	0.7860	+ 119.47 %	0.0233	<.0001***
<i>n/a</i>	- 0.4915	- 38.83 %	0.0364	<.0001***

Notes: *significant at $p \leq .05$; **significant at $p \leq .01$; ***significant at $p \leq .001$.

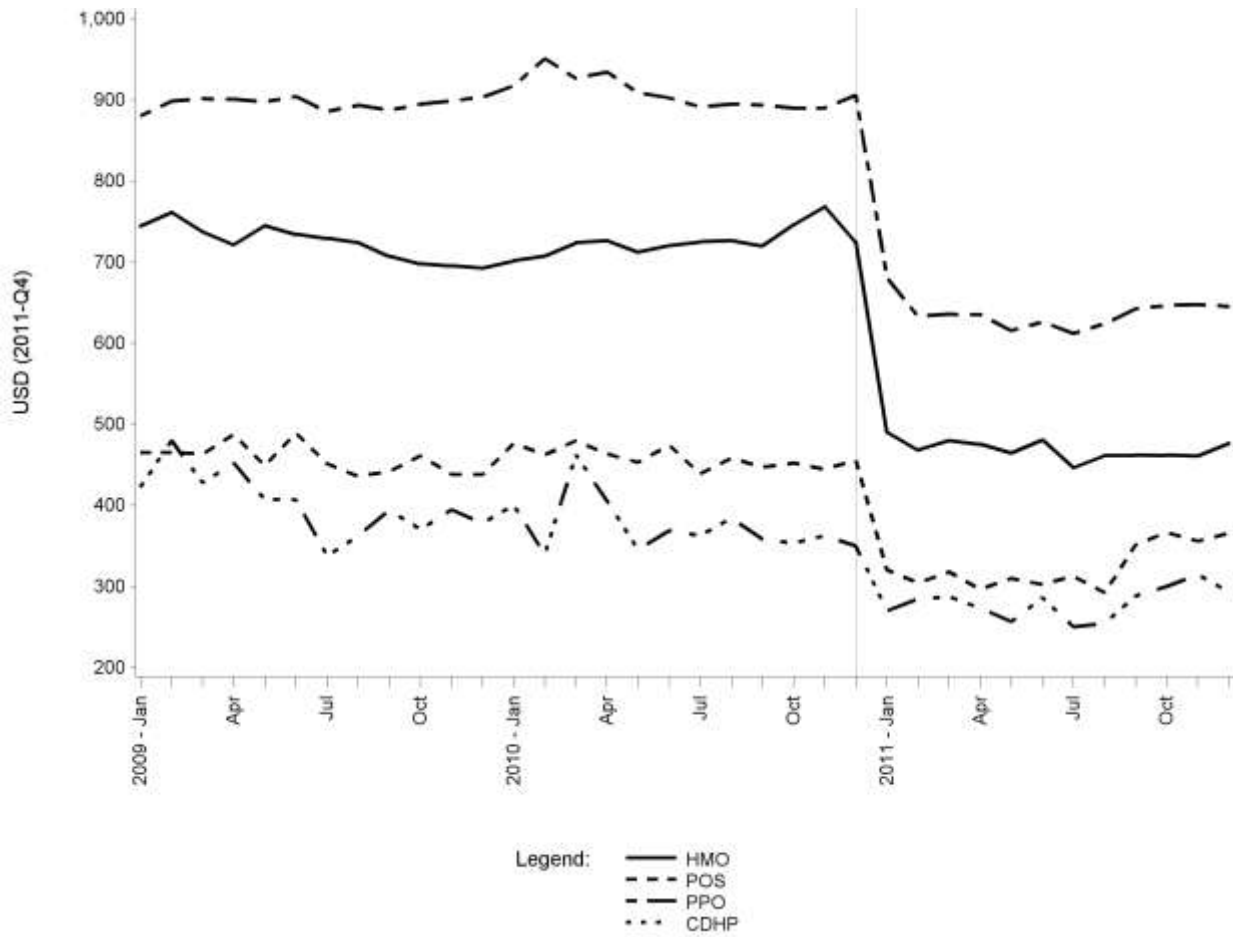
Appendix Table 2: Estimated Impact of the 2011 Coding Change on Utilization (full model)

<i>Parameter</i>	<i>Estimate</i>	<i>% Change</i>	<i>SE</i>	<i>p</i>
<i>CT of the abdomen or of the pelvis (the reference group)</i>				
Intercept	- 10.8499	-	0.0105	<.0001***
Slope	- 0.0012	- 0.12 %	0.0005	0.0171*
Change in intercept in 2011	- 0.0511	- 4.98 %	0.0120	<.0001***
Change in slope in 2011	0.0044	+ 0.44 %	0.0016	0.0045**
<i>CT of the abdomen and pelvis (w.r.t. the reference group)</i>				
Intercept	1.6169	+ 403.74 %	0.0074	<.0001***
Slope	0.0018	+ 0.18 %	0.0006	0.0010***
Change in intercept in 2011	0.0663	+ 6.85 %	0.0131	<.0001***
Change in slope in 2011	0.0036	+ 0.36 %	0.0017	0.0338*
<i>Health Plan Type</i>				
PPO (reference)	-	-	-	-
Comprehensive	0.8655	+ 137.62%	0.0057	<.0001***
EPO	0.6507	+ 91.69%	0.0074	<.0001***
HMO	- 0.0191	- 1.89%	0.0037	<.0001***
POS	0.2591	+ 29.58%	0.0037	<.0001***
CDHP	0.2993	+ 34.89%	0.0051	<.0001***
HDHP	0.6514	+ 91.82%	0.0087	<.0001***
<i>n/a</i>	0.5458	+ 72.60%	0.0065	<.0001***
<i>State</i>				
Massachusetts (reference)	-	-	-	-
Alabama	0.3881	+ 47.42%	0.0114	<.0001***
Alaska	0.9379	+ 155.46%	0.0367	<.0001***
Arizona	0.2214	+ 24.78%	0.0122	<.0001***
Arkansas	0.2932	+ 34.07%	0.0150	<.0001***
California	- 0.7985	- 55.00%	0.0102	<.0001***
Colorado	0.1177	+ 12.49%	0.0136	<.0001***
Connecticut	0.0136	+ 1.37%	0.0122	0.2627
Delaware	0.3672	+ 44.37%	0.0132	<.0001***
Florida	0.1493	+ 16.10%	0.0096	<.0001***
Georgia	0.0152	+ 1.53%	0.0095	0.1089
Hawaii	2.8689	+ 1,661.76%	0.0824	<.0001***
Idaho	0.5656	+ 76.05%	0.0224	<.0001***
Illinois	- 0.1487	- 13.82%	0.0097	<.0001***
Indiana	0.1494	+ 16.11%	0.0104	<.0001***
Iowa	0.1492	+ 16.09%	0.0147	<.0001***
Kansas	0.2785	+ 32.11%	0.0140	<.0001***
Kentucky	0.5180	+ 67.87%	0.0116	<.0001***

<i>Parameter</i>	<i>Estimate</i>	<i>% Change</i>	<i>SE</i>	<i>p</i>
Louisiana	0.3523	+ 42.23%	0.0131	<.0001***
Maine	0.4522	+ 57.18%	0.0209	<.0001***
Maryland	0.2844	+ 32.90%	0.0124	<.0001***
Michigan	- 0.1054	- 10.00%	0.0097	<.0001***
Minnesota	0.1254	+ 13.36%	0.0130	<.0001***
Mississippi	0.1387	+ 14.88%	0.0117	<.0001***
Missouri	0.2150	+ 23.99%	0.0104	<.0001***
Montana	- 0.0678	- 6.56%	0.0145	<.0001***
Nebraska	0.2097	+ 23.33%	0.0187	<.0001***
Nevada	0.1940	+ 21.41%	0.0153	<.0001***
New Hampshire	0.4169	+ 51.73%	0.0182	<.0001***
New Jersey	- 0.1995	- 18.09%	0.0106	<.0001***
New Mexico	0.0842	+ 8.78%	0.0118	<.0001***
New York	- 0.2229	- 19.98%	0.0095	<.0001***
North Carolina	0.0885	+ 9.25%	0.0106	<.0001***
North Dakota	0.9293	+ 153.27%	0.0345	<.0001***
Ohio	0.0853	+ 8.90%	0.0096	<.0001***
Oklahoma	0.1624	+ 17.63%	0.0115	<.0001***
Oregon	0.0030	+ 0.30%	0.0137	0.8237
Pennsylvania	- 0.0511	- 4.98%	0.0105	<.0001***
Puerto Rico	0.7231	+ 106.08%	0.0384	<.0001***
Rhode Island	0.4185	+ 51.97%	0.0201	<.0001***
South Carolina	0.2218	+ 24.83%	0.0102	<.0001***
South Dakota	0.6411	+ 89.86%	0.0282	<.0001***
Tennessee	0.2856	+ 33.06%	0.0100	<.0001***
Texas	- 0.1268	- 11.91%	0.0092	<.0001***
Utah	0.4447	+ 56.00%	0.0176	<.0001***
Vermont	1.3917	+ 302.17%	0.0344	<.0001***
Virgin Islands	3.7804	+ 4,283.36%	0.3142	<.0001***
Virginia	0.1124	+ 11.90%	0.0113	<.0001***
Washington	0.0034	+ 0.34%	0.0113	0.7642
Washington, DC	1.6271	+ 408.91%	0.0534	<.0001***
West Virginia	0.7686	+ 115.67%	0.0152	<.0001***
Wisconsin	0.0423	+ 4.32%	0.0117	0.0003***
Wyoming	1.0319	+ 180.64%	0.0281	<.0001***
<i>n/a</i>	0.9771	+ 165.67%	0.0386	<.0001***
<i>Other covariates</i>				
Weekend Indicator	- 0.8456	- 57.07 %	0.0032	<.0001***
<i>Dispersion</i>	0.0726	-	0.0007	-

Notes: *significant at $p \leq .05$; **significant at $p \leq .01$; ***significant at $p \leq .001$.

Appendix Figure 1: Median adjusted payment per combined CT scan of the abdomen and pelvis by health plan type



Appendix Figure 2: Median adjusted payment per combined CT scan of the abdomen and pelvis by region

