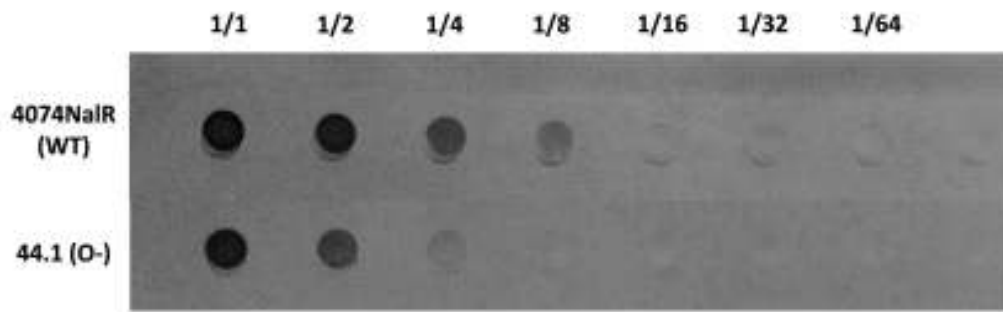


1  
2  
3  
4  
5  
6  
7  
8

**Supplementary\_Figure 1.** Initial attachment assay (plastic surface of 96-well microtiter plates) by *A. pleuropneumoniae* parental strain 4074NaI<sup>R</sup> (A), the LPS O-antigen mutant 44.1 (B), the LPS-core mutant CG3 (C), the capsule mutant 33.2 (D) and the *pgaC* mutant (E). Numerical values ( $\pm$ SEMs) represent the average number of particles per field from three fields of view and two independent biological replicates. Bacteria were observed at 40 X magnification. Scale bars equal 20  $\mu$ m.

9



10

11

12 **Supplementary\_Figure 2.** Detection of PGA in the biofilm supernatant of the parental strain

13 4074NaIR and O-antigen mutant 44.1 cultured in 6-wells plate for 4h. Starting wells (1/1)

14 contained 100  $\mu$ L and then were serially diluted (1/2 to 1/64).

15