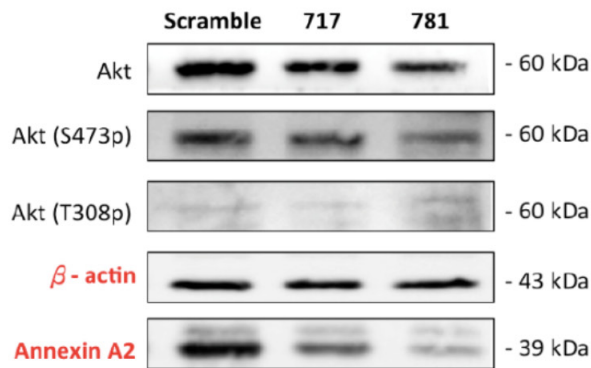
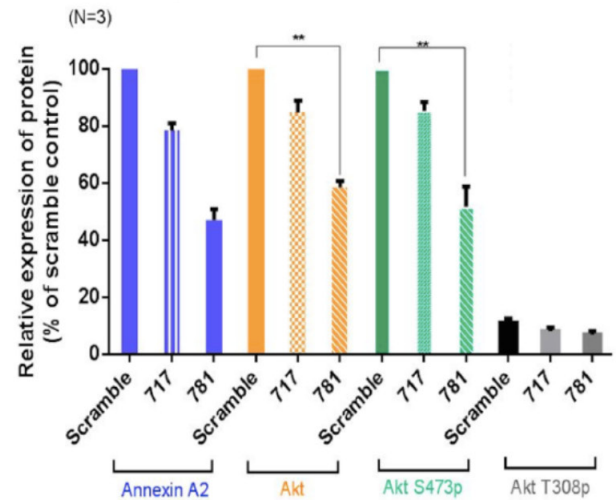


SUPPLEMENTARY FIGURES

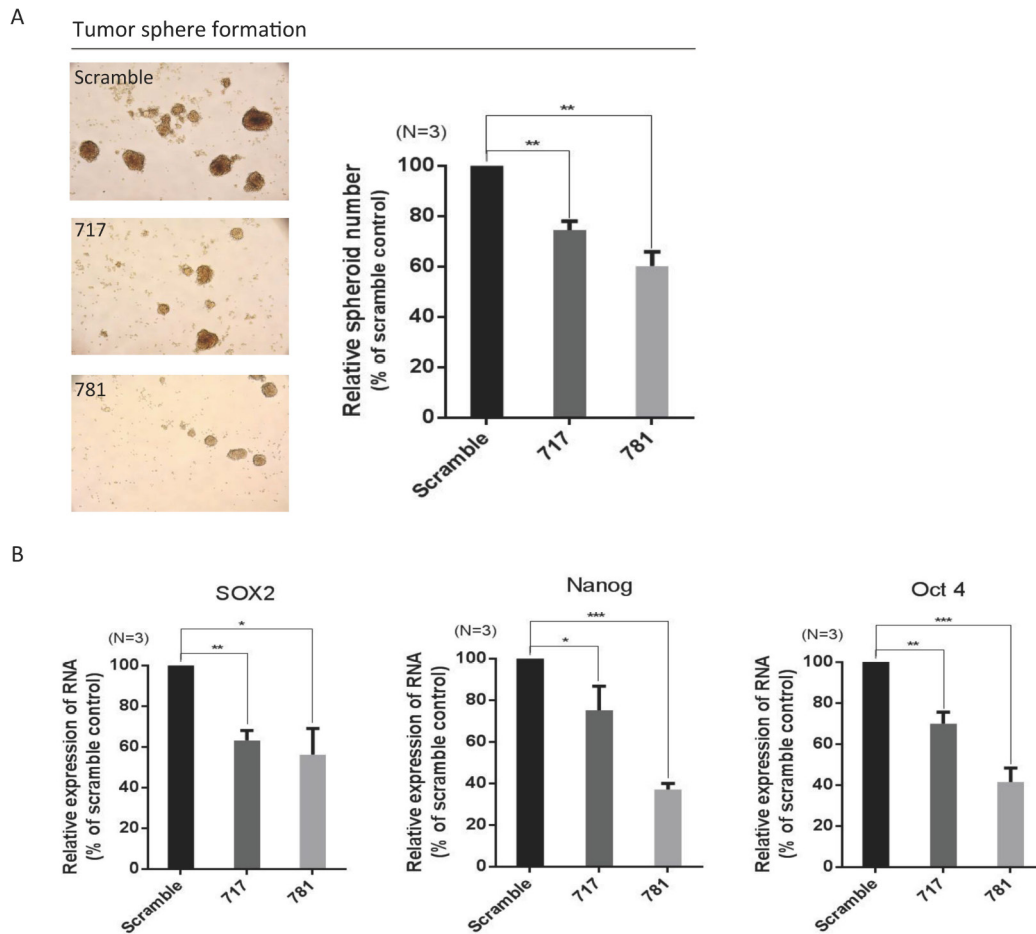
(A)



(B)



Supplementary Figure S1: Knockdown of annexin A2 down-regulates the expression of total Akt and Akt phosphorylation at S473. A. TW01-scramble, TW01-717 and TW01-781 total cell lysates were prepared, and the level of total Akt, Akt phosphorylated at S473 and T308 were assayed by Western blotting. B. Semi-quantitative analysis of western blotting, mean \pm SEM of triplicates from 3 independent experiments. Mean \pm SEM * P < 0.05; ** P < 0.01; *** P < 0.001, significant different from control (t -test).



Supplementary Figure S2: Knockdown of annexin A2 suppressed cancer stemness. **A.** Knockdown ANXA2 suppressed tumor sphere formation. TW01-scramble, TW01-717 and TW01-781 cells were cultured in DMEM/F12 serum free medium containing basic fibroblast growth factor (bFGF), epidermal growth factor (EGF) and B27 supplement in ultralow attachment plates. After 2 weeks, tumor spheres were visualized and enumerated by microscopy. **B.** The mRNA levels of Sox2, Oct4 and Nanog in TW01-scramble, TW01-717 and TW01-781 cells were measured by RT-qPCR. * $P < 0.05$, ** $P < 0.01$, *** $P < 0.001$. Error bars represent mean \pm SD of triplicates.