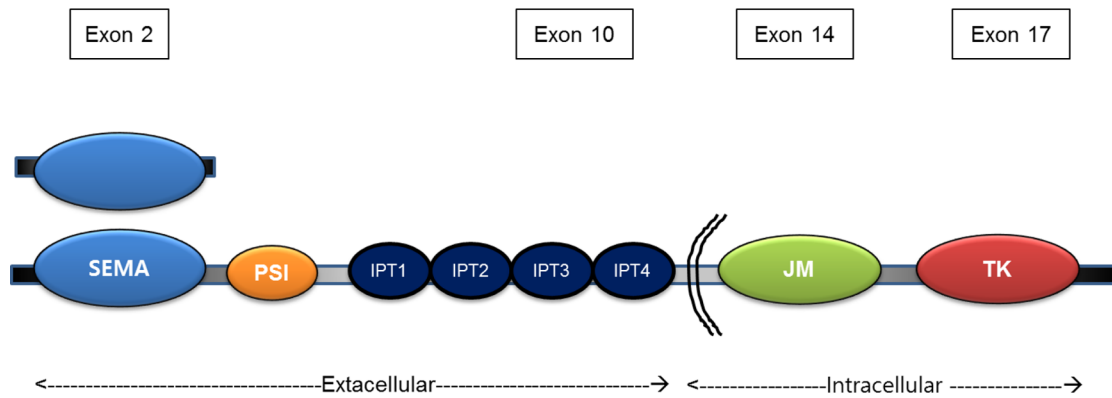
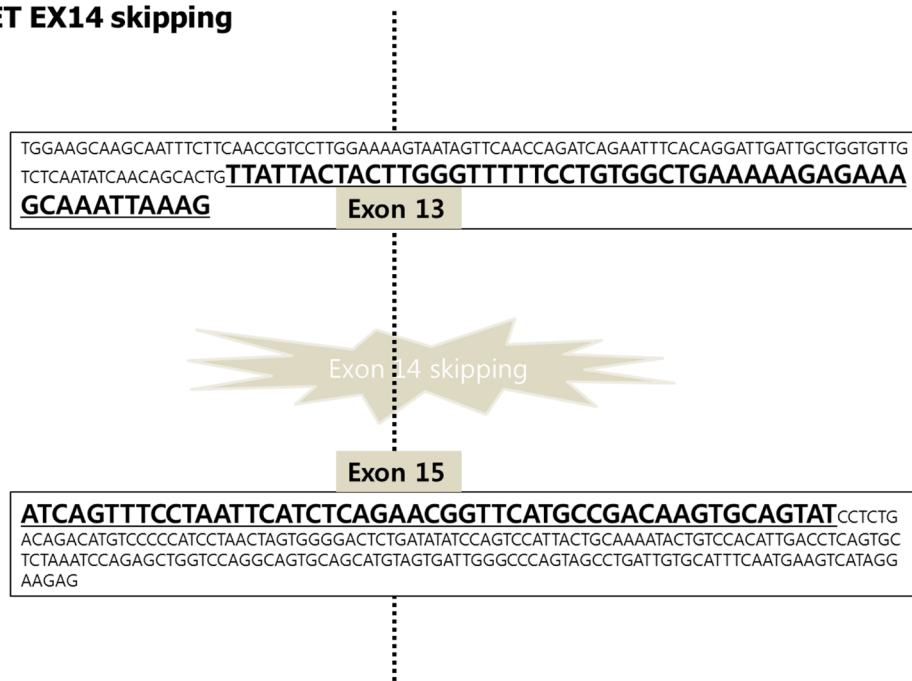


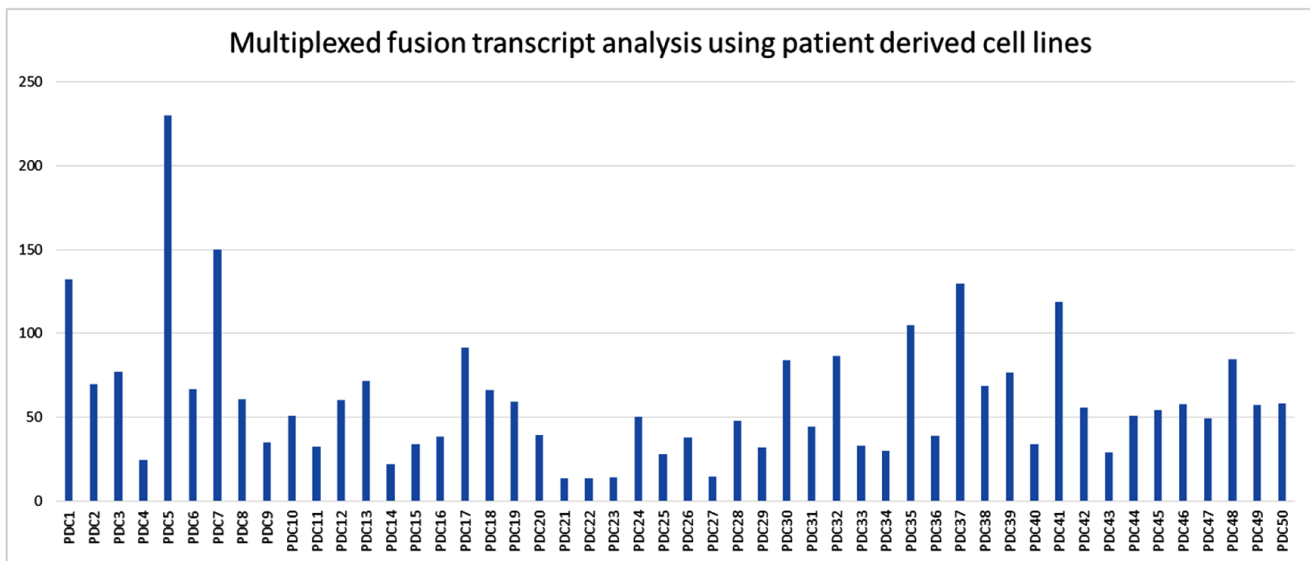
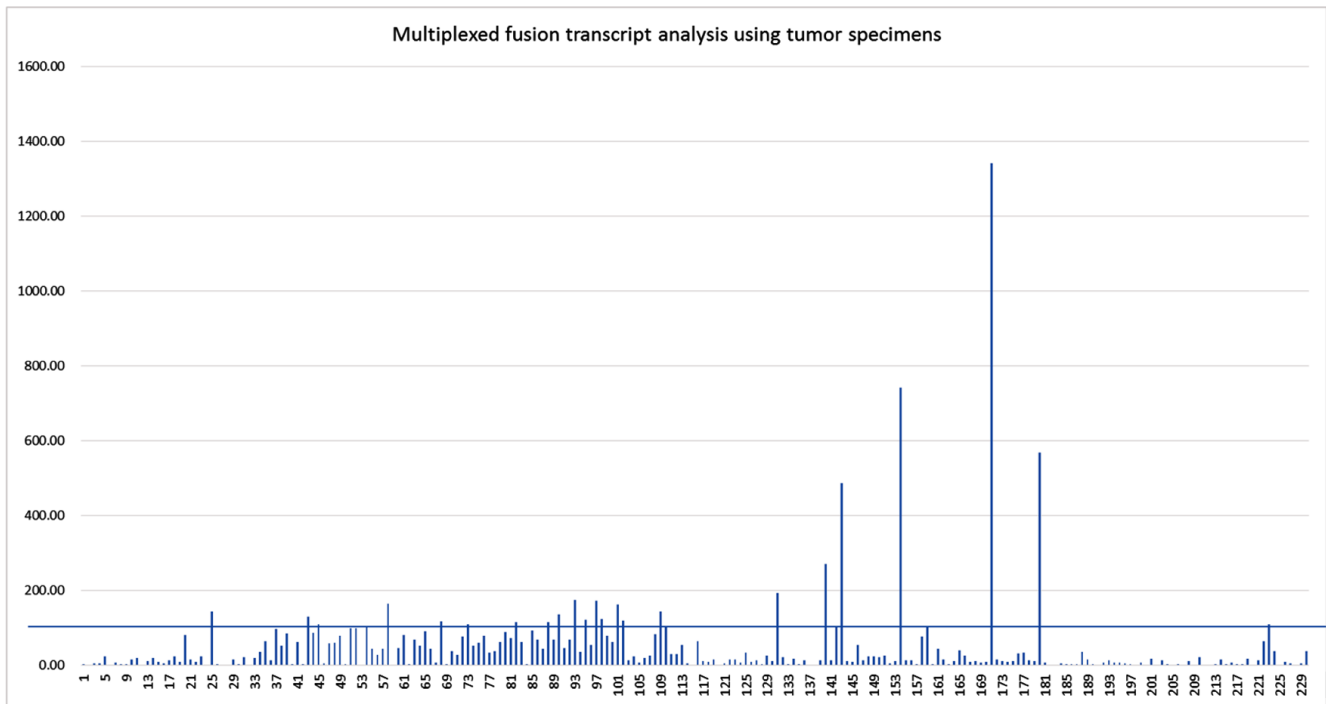
SUPPLEMENTARY FIGURES AND TABLES

MET EX14 skipping

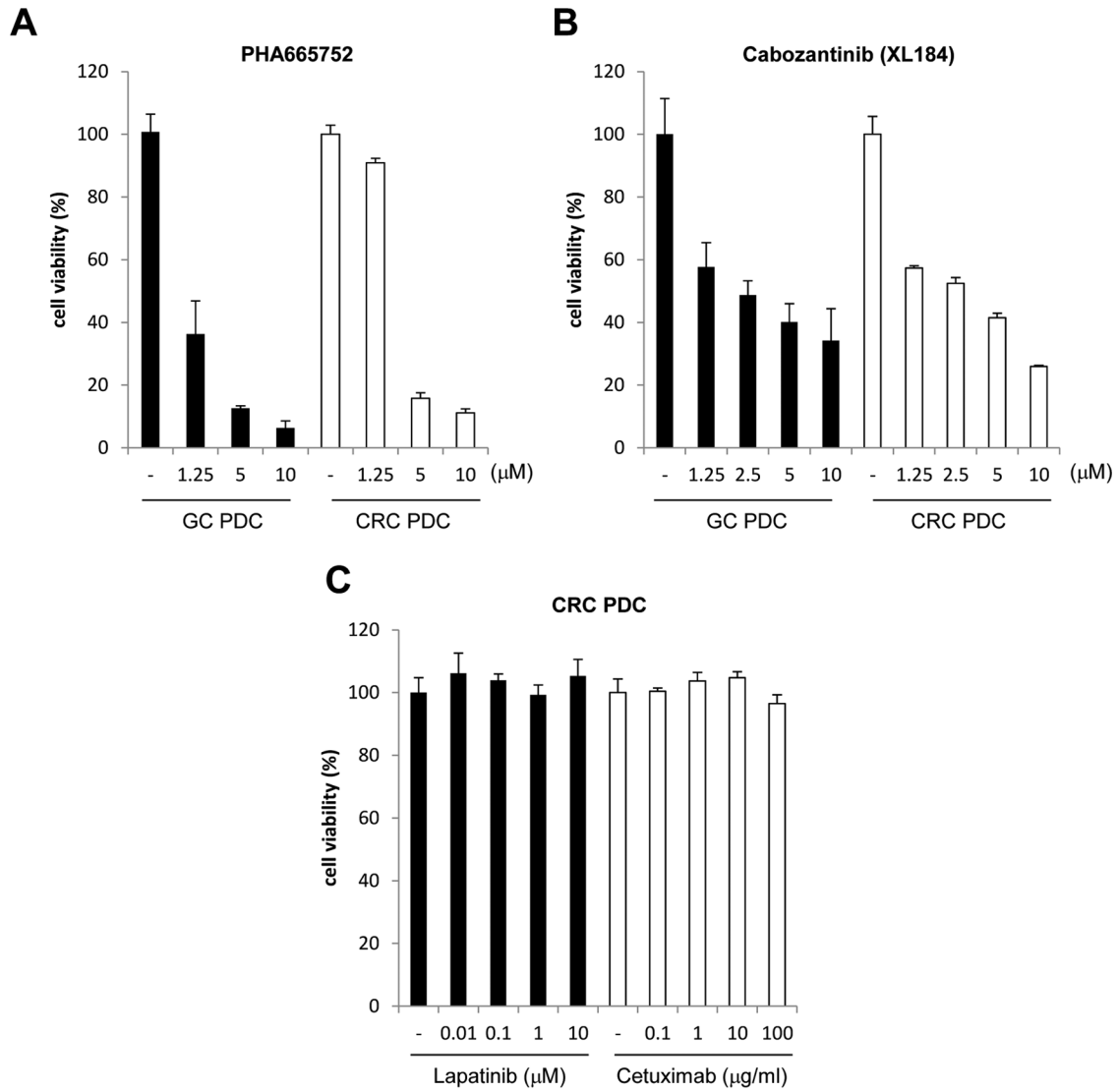


JM sequence which downregulates the MET kinase activity through the phosphorylation of Ser975 and Tyr1003 residues

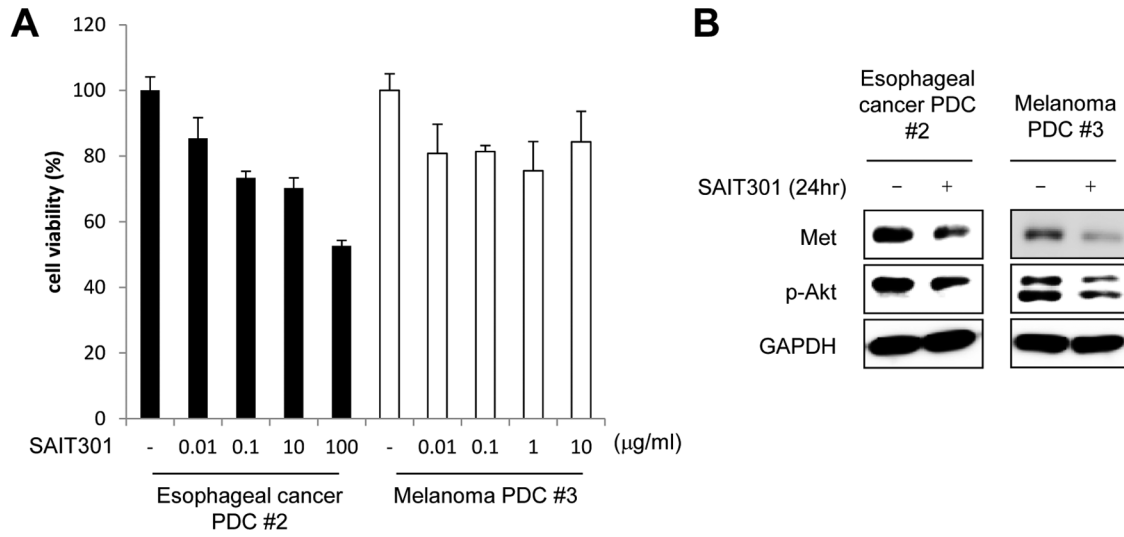
Supplementary Figure S1: Structure of MET.



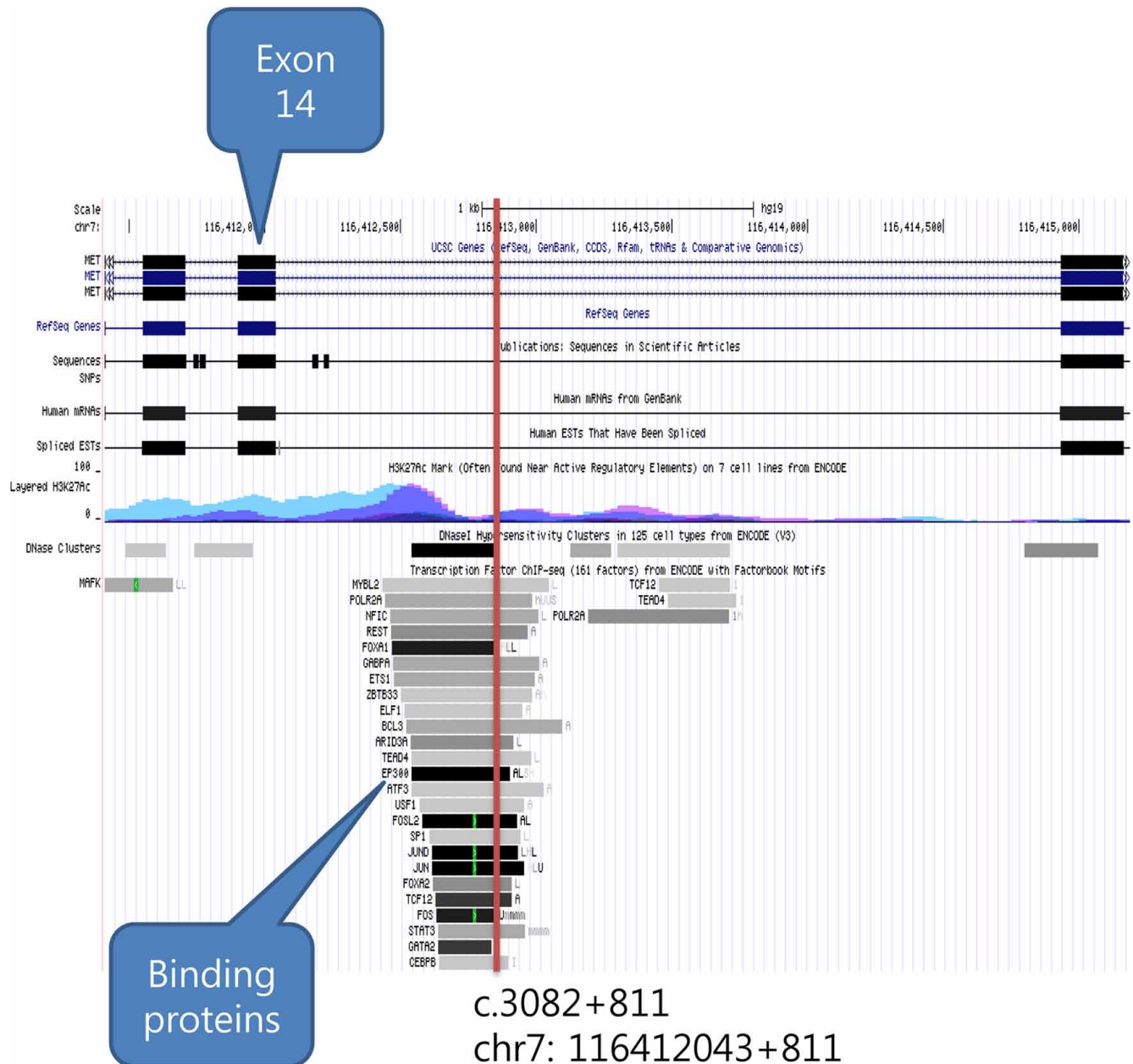
Supplementary Figure S2: Multiplexed fusion transcript analysis using nCounter assay.



Supplementary Figure S3: The anti-tumor efficacy of PHA665752, cabozantinib and anti-EGFR targeted drug in METex14 GC & CRC PDCs.



Supplementary Figure S4: The anti-tumor efficacy of anti-MET treatment in esophageal cancer, melanoma PDCs.



Supplementary Figure S5: Exon 14 and flanking intron of MET gene with c.3082+811 site (red bar) in chromosome 7.

Supplementary Table S1: Nanostring probe design.

Supplementary Table S2: METex14 in COSMIC and TCGA lung adenocarcinomas data.