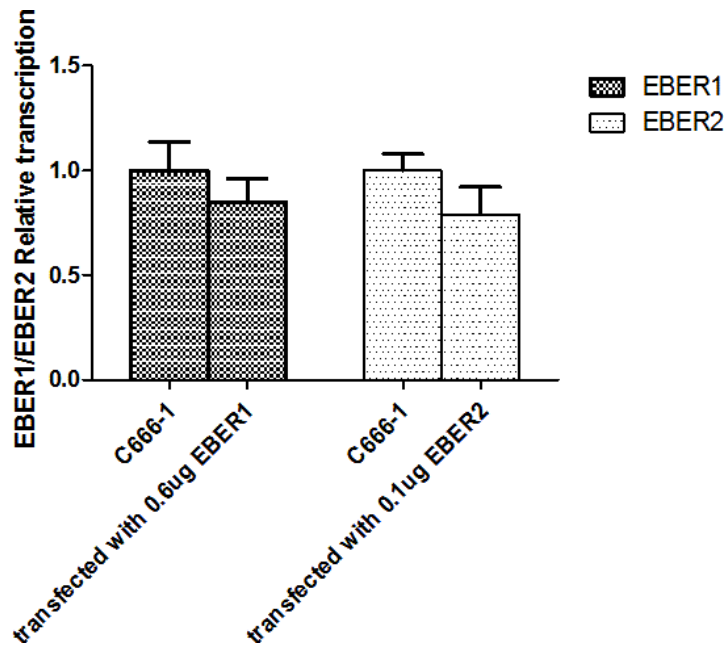
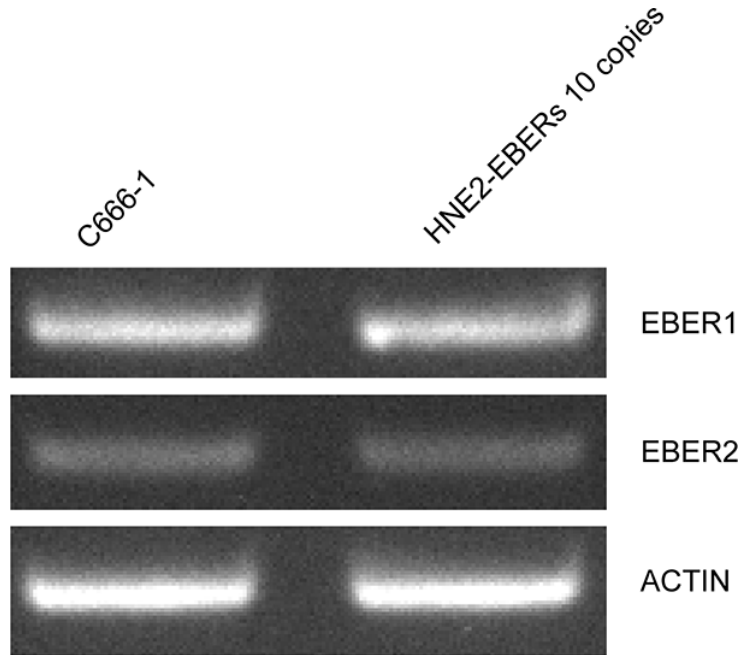


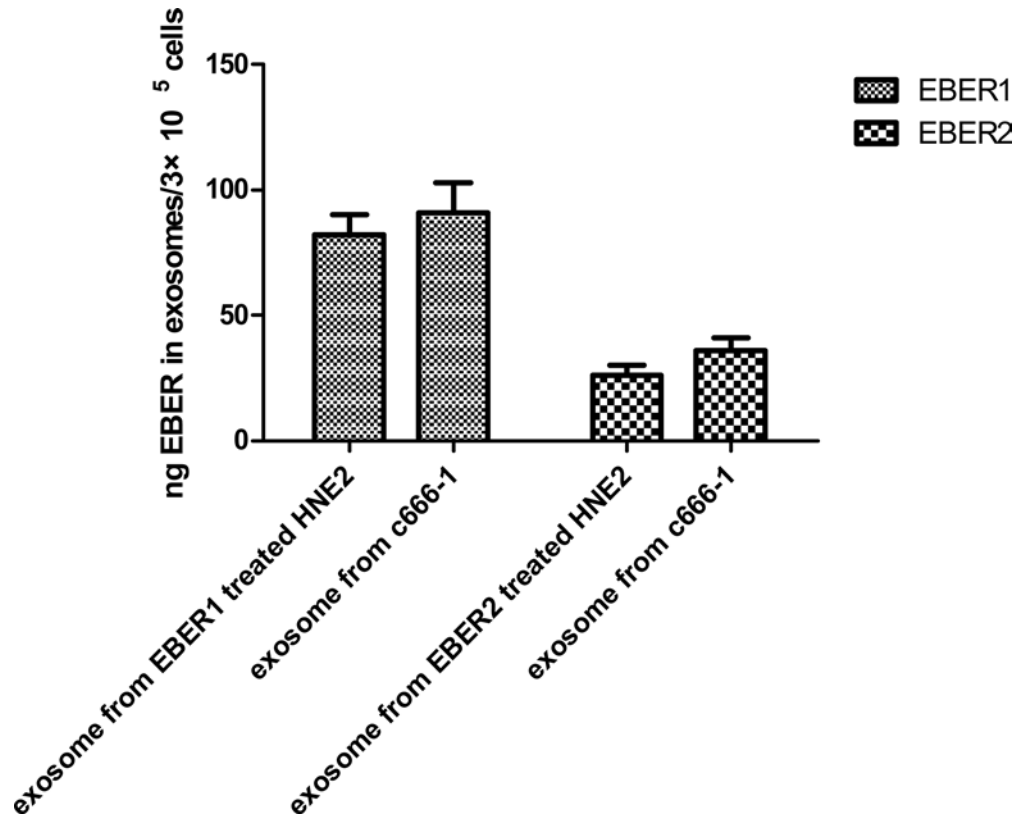
SUPPLEMENTARY FIGURES AND TABLES



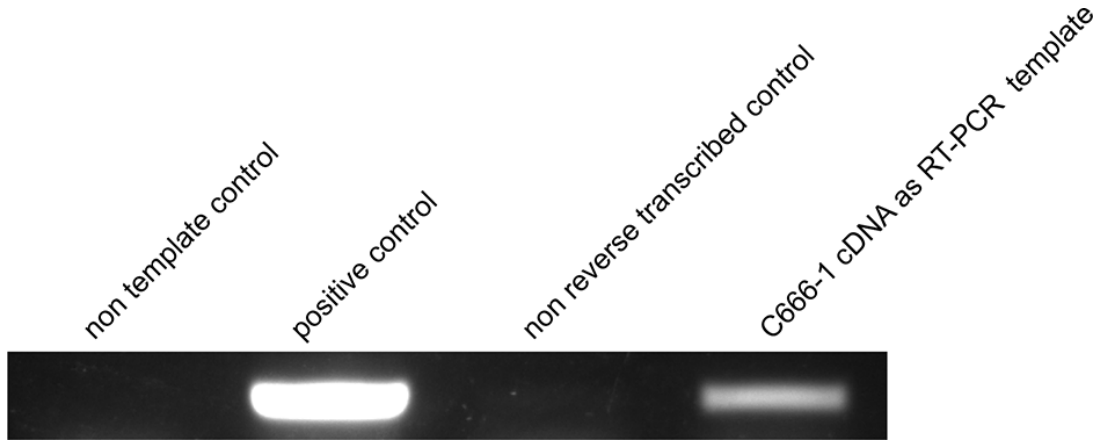
Supplementary Figure S1: Validation of comparable EBER1 and EBER2 levels between the HNE2 cells challenged with *in vitro* transcribed EBER1 or EBER2 and C666-1 cells.



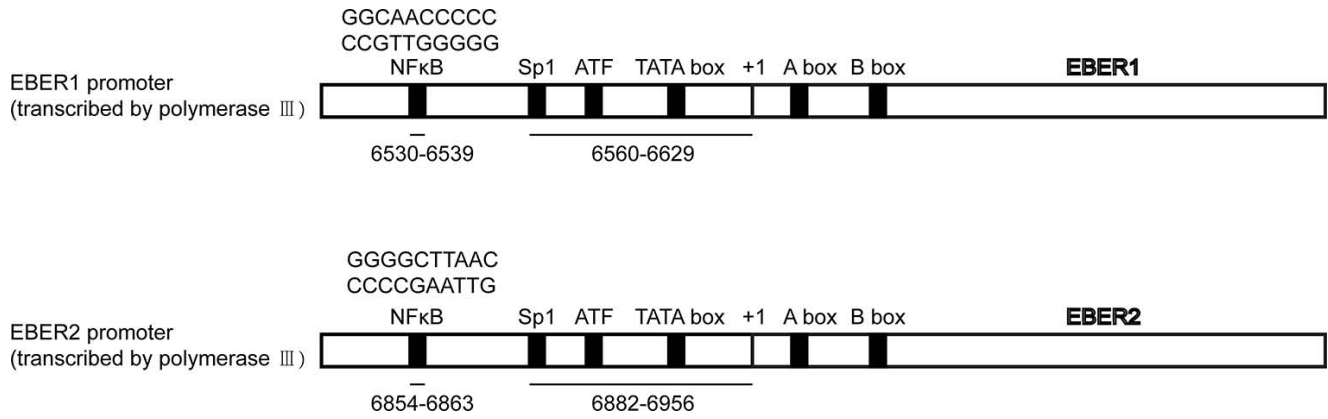
Supplementary Figure S2: Identification of EBER1 and EBER2 transcription level in HNE2 cells expressing 10 copies of EBERs construct relative to C666-1 cells.



Supplementary Figure S3: Comparison of the amount of EBER1 and EBER2 in isolated exosomes from C666-1 and *in vitro* transcribed EBERs treated HNE2 cells.



Supplementary Figure S4: EBER1 and EBER2 may coexist as a transcript. Possible existence of a transcript encompassing both EBER1 and EBER2 was identified by RT-PCR with EBER1 forward primer and EBER2 reverse primer. Positive control: EBERS expression plasmid as PCR template; Non reverse transcribed control: C666-1 RNA treated with DNase I as PCR template.



Supplementary Figure S5: Graphic representation displays EBERs transcripts and location of EBERs transcription factor.

Supplementary Table S1. Primer sequences

Gene	Forward	Reverse
EBER1	5'-AGGACCTACGCTGCCCTAGA-3'	5'-AAAACATGCGGACCACCAGC-3'
EBER2	5'-AGGACAGCCGTTGCCCTAGTG-3'	5'-AAAATAGCGGACAAGCCGAATAC-3'
EBER1 (CHIP)	5'- TGTA AACACCGACCGC -3'	5'- AAGACAGACTACGTCACCGT-3'
EBER2 (CHIP)	5'-TATCCCGCAGTTCCAC-3'	5'-TGATGTAGCGAACCGTAA-3'
M-CSF	5'-TAGCCACATGATTGGGAGTG-3'	5'-TATCTCTGAAGCGCATGGTG-3'
MCP-1	5'-GCTGTGATCTTCAAGACCATTGTG-3'	5'-TGGAATCCTGAACCCACTTCTG-3'
IL-6	5'-GGTACATCCTCGACGGCATCT-3'	5'-GTGCCTCTTTGCTGCTTTCAC-3'
TNF α	5'-CCCAGGCAGTCAGATCATCTTC-3'	5'-AGCTGCCCCTCAGCTTGA-3'
IL1 α	5'-CGCCAATGACTCAGAGGAAGA.-3'	5'- AGGGCGTCATT CAGGATGAA-3'
TLR3	5'-CCTGGTTTGTAAATTGGATTAACGA-3'	5'-TGAGGTGGAGTGTTGCAAAGG-3'
IFN β	5'-CAGCAATTTTCAGTGTCAGAAGC-3'	5'-TCATCCTGTCCTTGAGGCAGT-3'
LMP1	5'-AGCGACTCTGCTGGAAATGAT-3'	5'-TGATTAGCTAAGGCATTCCCA-3'
CCL1	5'-ACAGAAAGGCCCTCAACTGTC-3'	5'-TCCTTGATGTACTCTTGGACCC-3'
CCL17	5'-AGAGCCACAGTGAGGGAGAT-3'	5'-TTAATCTGGGCCCTTTGTGC-3'
CXCL13	5'-GCTTGAGGTGTAGATGTGTCC-3'	5'-CCCACGGGGCAAGATTTGAA-3'
CXCL8	5'-GAATGGGTTTGCTAGAATGTGATA-3'	5'-CAGACTAGGGTTGCCAGATTTAAC-3'
ACTIN	5'-CTGGAACGGTGAAGGTGACA-3'	5'-AAGGGACTTCCTGTAACAATGCA-3'

Supplementary Table S2. Targeting sequences for shRNA

Gene	Targeting sequences
EBER1	#1: 5'-CGGTGTCTGTGGTTGTCTT-3'; #2: 5'-CTCTGCTTTCTGCCGTCTT-3'
EBER2	#1: 5'-GCATTTGCAAGTCAGGATT-3'; #2: 5'-GGATTCTCTAATCCCTCTG-3'
TLR3	1#: 5'-AAGTGCACTGTTAGCCATGAA-3', 2#: 5'-CCTTACACATACTCAACCTAA-3'; 3#: 5'-CCTCTTCGTAACCTGACCATT-3'