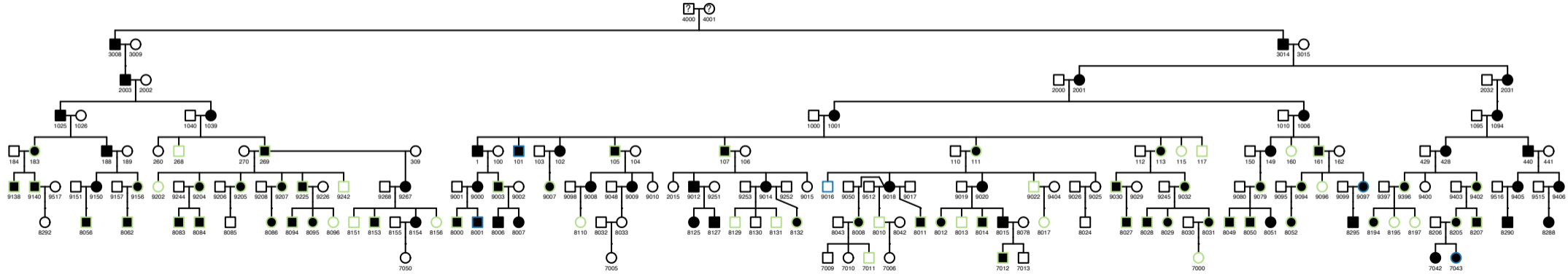
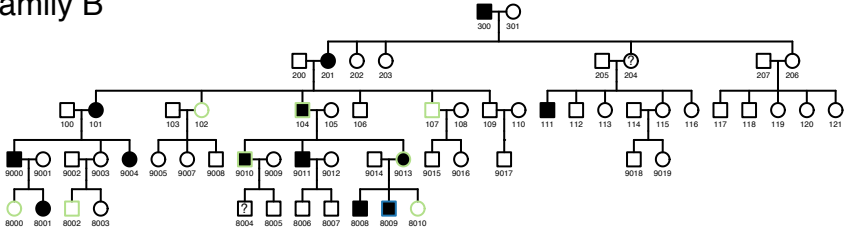


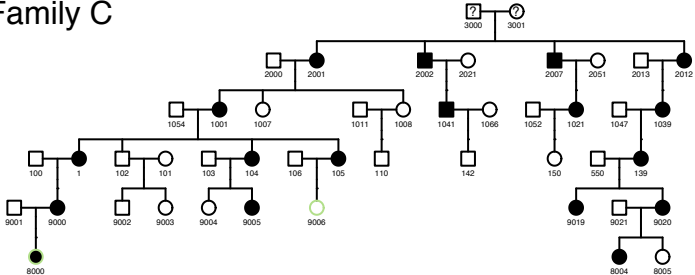
Family A



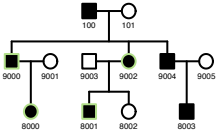
Family B



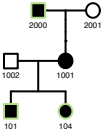
Family C



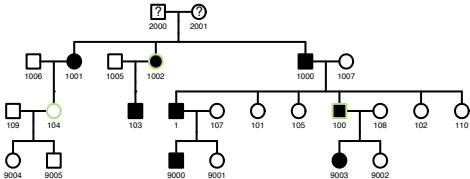
Family D



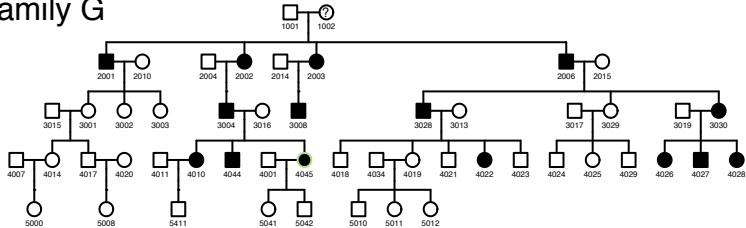
Family E



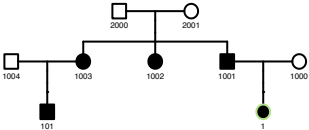
Family F



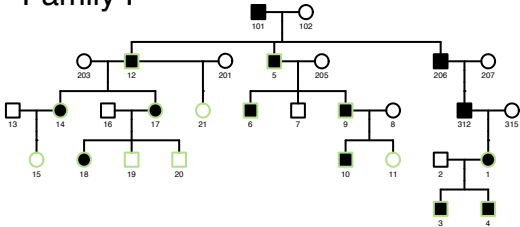
Family G



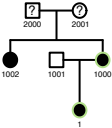
Family H



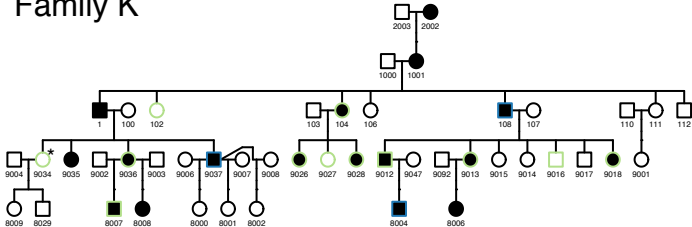
Family I



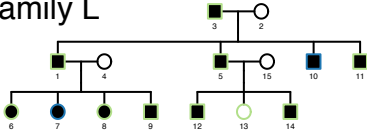
Family J



Family K



Family L



Supplemental Figure 1: Pedigrees of families included in this study. Individuals from whom DNA was available in sufficient quantity and quality are indicated in green, individuals who were studied using next-generation sequencing are indicated in blue. The individual marked with the asterisk in Family K harbored the interval defining recombination.