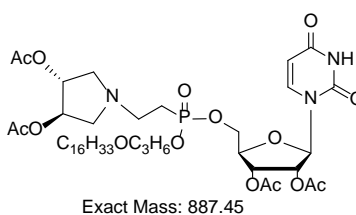
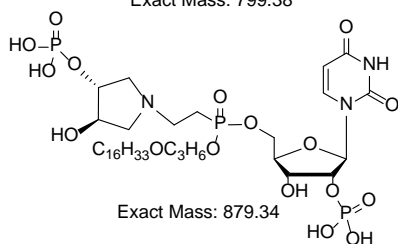
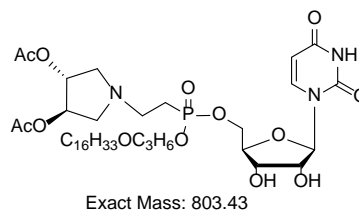
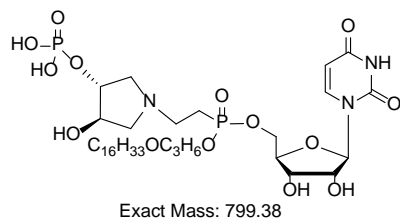
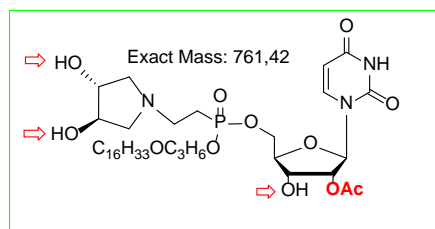
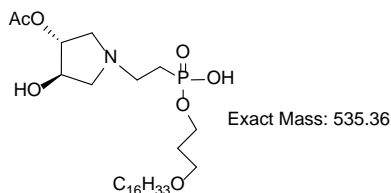
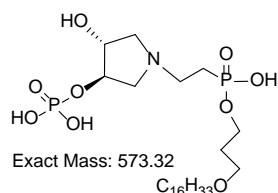
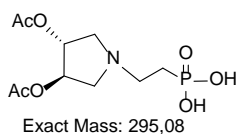
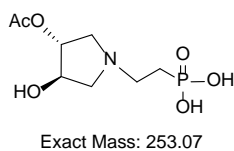
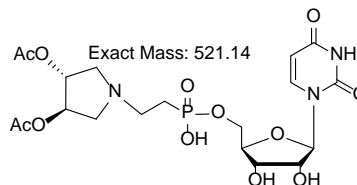
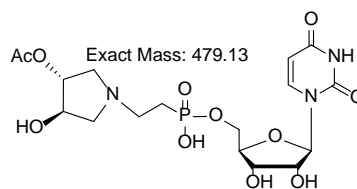
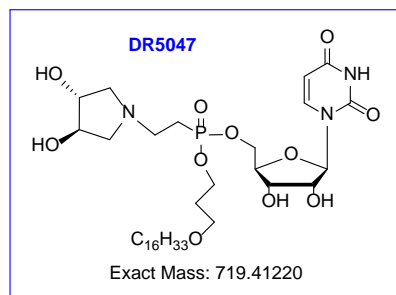


Potential metabolites of DR5047 II.:



S2 Fig. Structures of potential metabolites of DR5047. In all HPLC-MS analyses only intact DR5026 was detected. In the case of DR5047 (blue rectangle) less than 5% of the compound with the exact mass of 761.42 was detected. It corresponds to a monoacetylated compound – highlighted by the green rectangle - the exact position of the acetyl group has not been determined (other possible positions for the acetyl group are indicated with red arrows).