





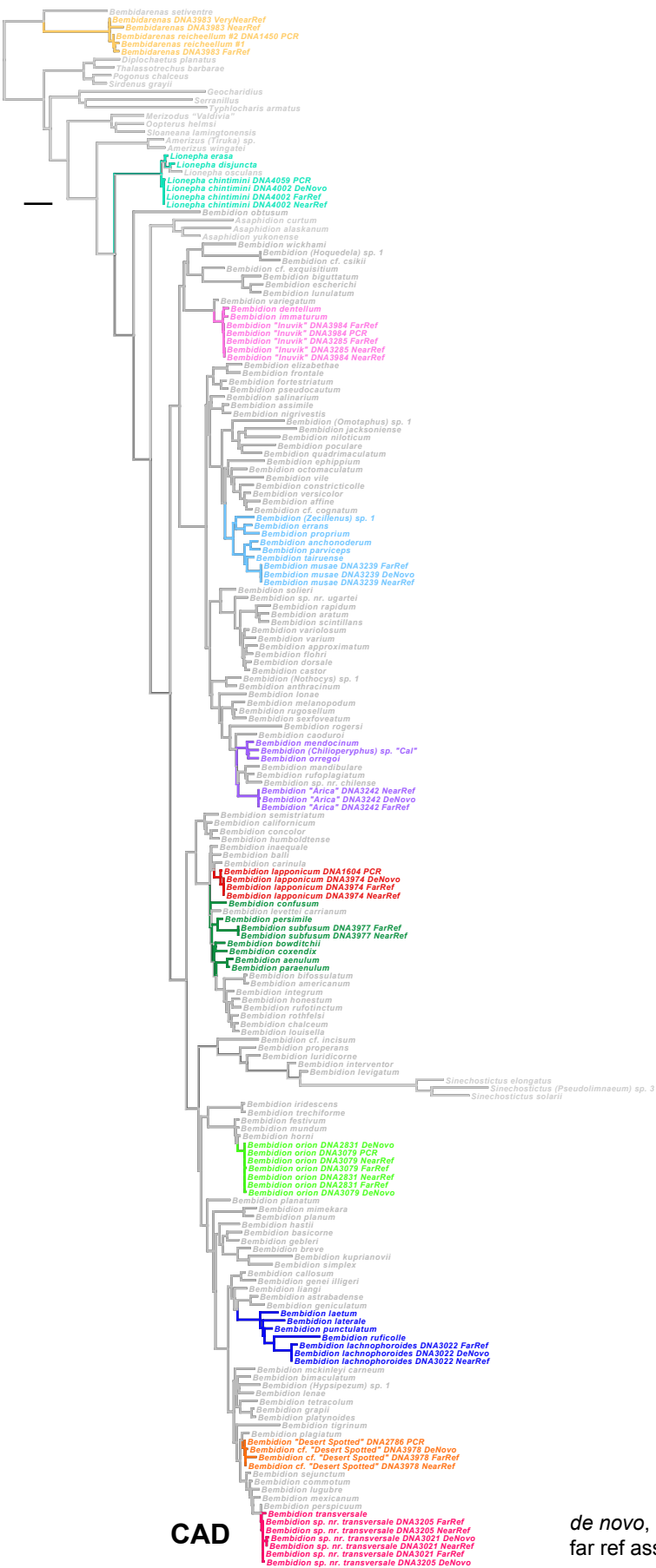
COI

de novo, near ref, and far ref assemblies separate



ArgK

de novo, near ref, and far ref assemblies separated



CAD

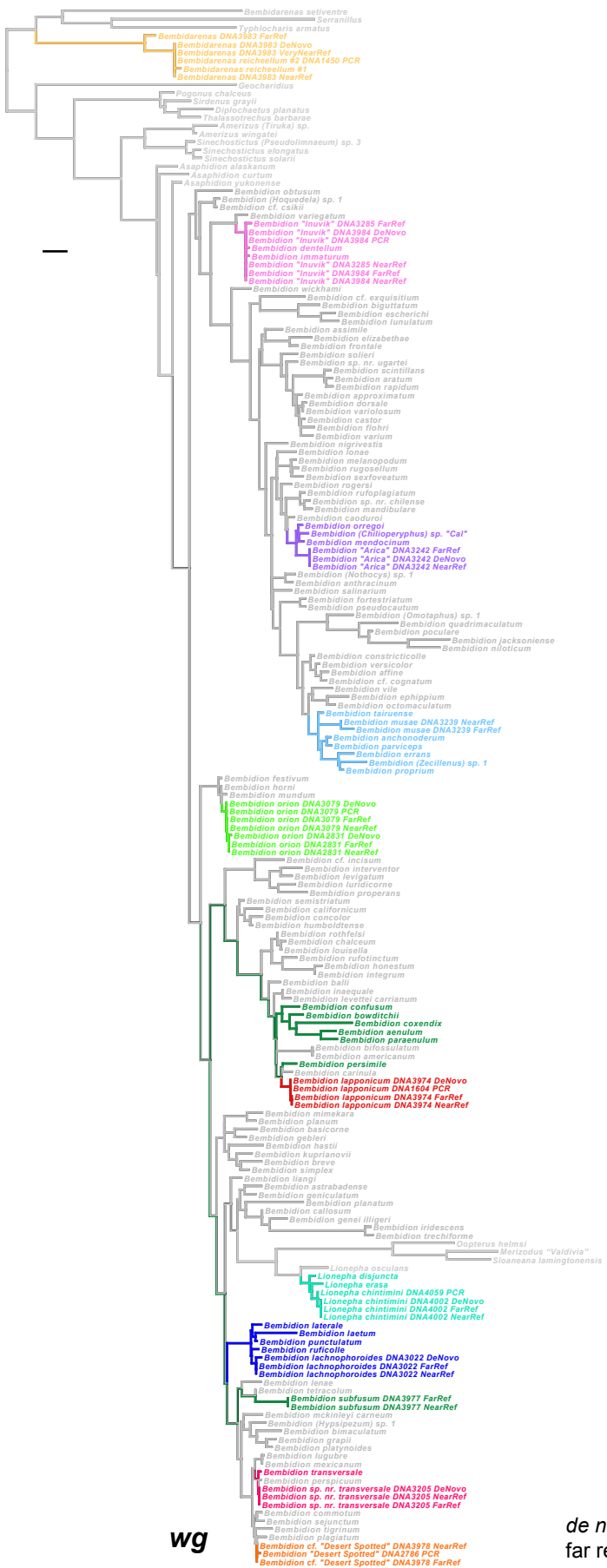
de novo, near ref, and far ref assemblies separate



de novo, near ref, and far ref assemblies separate

Topo

Bembidion lapponicum DNA1604 PCR  
 Bembidion lapponicum DNA3874 DeNovo  
 Bembidion lapponicum DNA3974 FarRef  
 Bembidion lapponicum DNA3974 NearRef



wg

de novo, near ref, and far ref assemblies separate