

Figure S5.

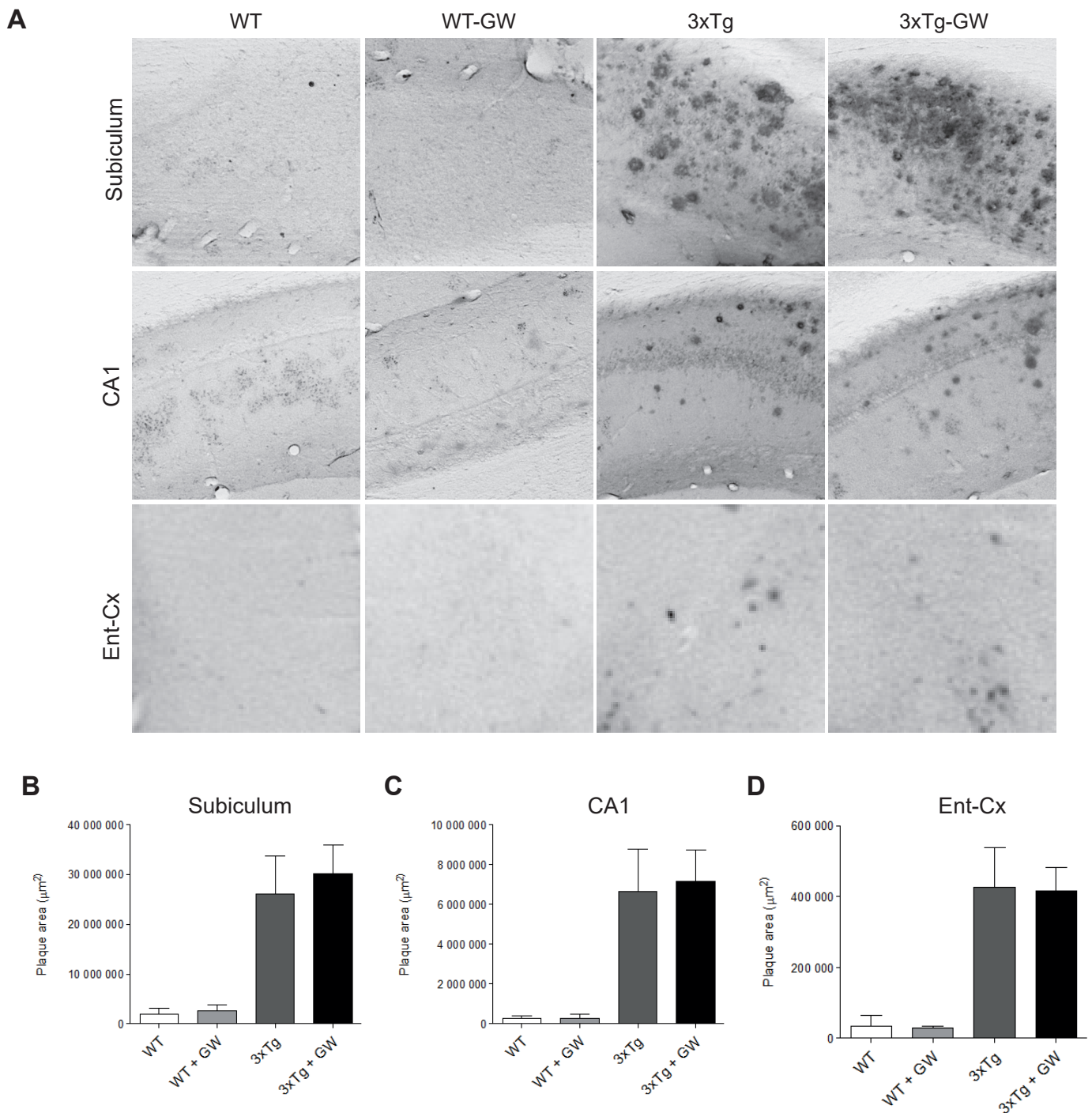


Figure S5. GW3965 treatment did not reduce amyloid plaque area in Subiculum, CA1 of the hippocampus and Entorhinal cortex in 3xTg-AD mice. Amyloid plaque deposition in brains of treated and untreated mice groups were evaluated by immunohistochemistry with antibody anti-A β (6E10). (A) Representative pictograms of A β immunohistochemistry from regions of interest; Subiculum, CA1 of the hippocampus and Entorhinal cortex. (B) Quantitative analysis of the data presented in A from Subiculum. (C) CA1 of the hippocampus and (D) Entorhinal cortex (Ent Cx). Not significant changes were found in A β plaque area after GW3965 treatment in 3xTg-AD mice as compared with untreated 3xTg-AD mice. Data were expressed as mean \pm S.E.M. Statistical analysis was done by one way ANOVA followed by Tukey's multiple comparison test. Females, n=4 per group.