

## Supplementary Material

Figure S1: Effect of 6-OHDA on hepatic sympathetic innervation. Representative immunohistochemistry of sympathetic tyrosine hydroxylase nerve positive fibers of liver of mice with or without 6-OHDA. Typical images were selected from each experimental group (original magnification 200×). Scale bar = 100 μm. Arrows indicate sympathetic nerve fibers.

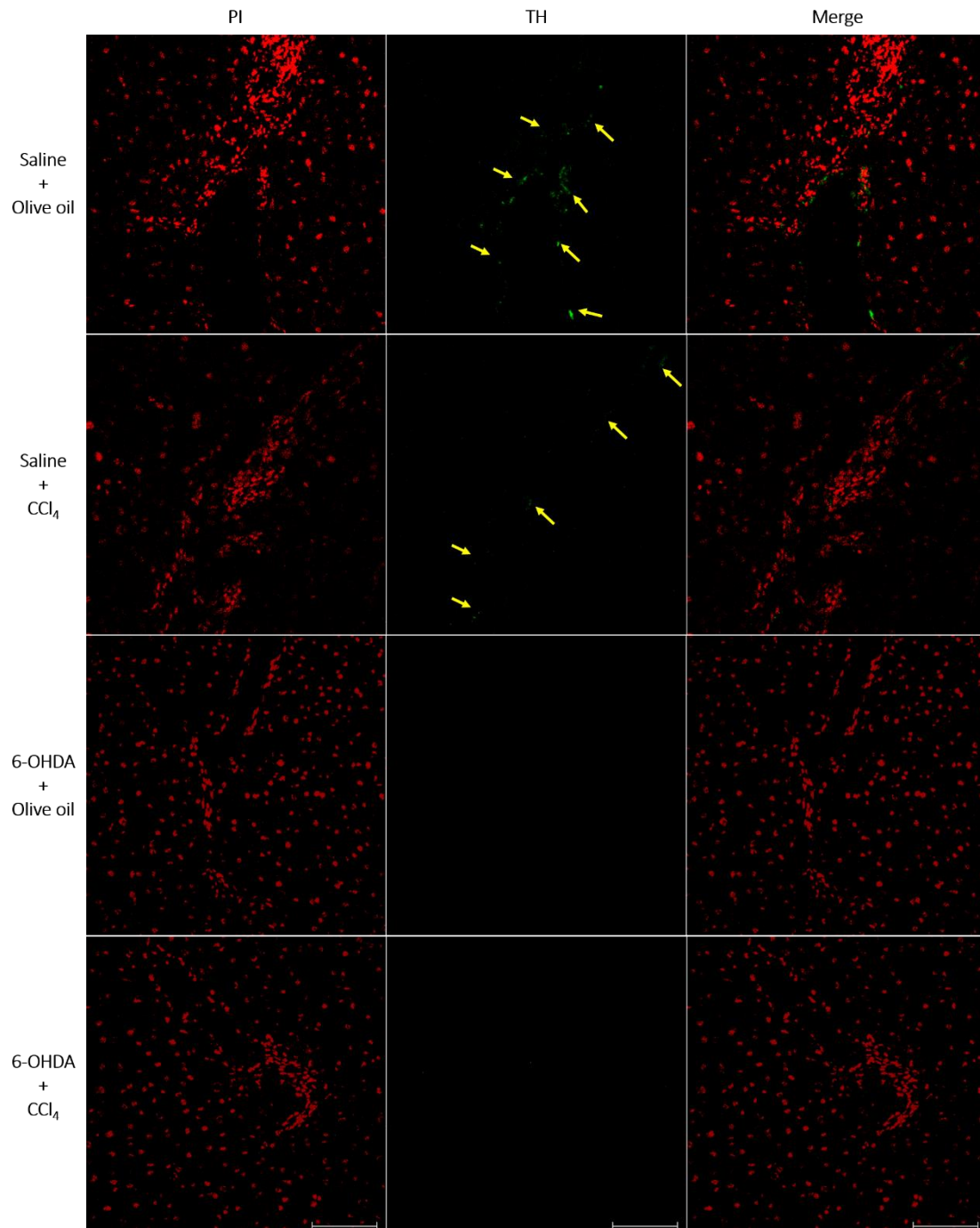


Figure S2: Effect of 6-OHDA on CCl<sub>4</sub> induced hepatic injury. Histological features (a), necrosis area (b) and severity score (c) of liver sections stained with hematoxylin and eosin 24 h after CCl<sub>4</sub> treatment. Typical images were selected from each experimental group (original magnification 40×-400×). The saline + olive oil group and the 6-OHDA + olive oil group showing normal hepatic architecture; the saline + CCl<sub>4</sub> group showing hepatocellular necrosis; the 6-OHDA + CCl<sub>4</sub> group showing mild hepatocellular necrosis. The histological changes were scored in Methods. Data plotted are mean and SD (n = 6 animals in each group). ### denotes significant differences ( $p < 0.001$ ) compared with the saline + CCl<sub>4</sub> group.

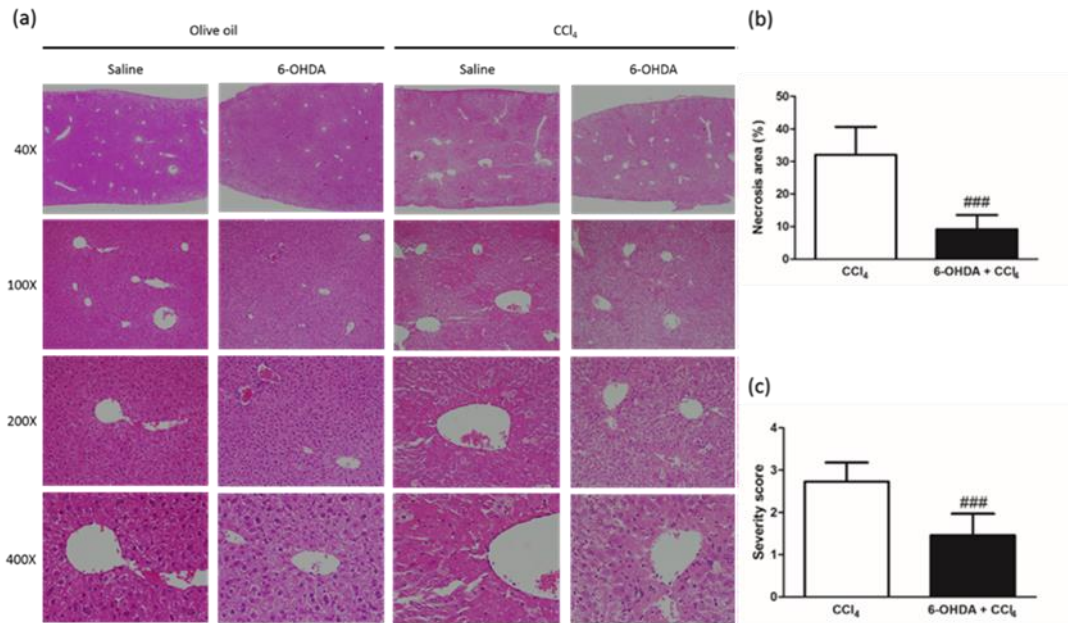


Table S1: Serum biochemical markers in mice after 24 hours of CCl<sub>4</sub> treatment with or without 6-OHDA

Parameter	Saline + Olive oil (n = 6)	6-OHDA + Olive oil (n = 6)	Saline + CCl <sub>4</sub> (n = 6)	6-OHDA + CCl <sub>4</sub> (n = 6)
Aspartate transaminase (AST, IU/L)	134 ± 18	115 ± 59	17,830 ± 3,078 <sup>***</sup>	4,115 ± 1,755 <sup>####</sup>
Alanine transaminase (ALT, IU/L)	40 ± 11	51 ± 28	15,519 ± 4,678 <sup>***</sup>	7,809 ± 2,527 <sup>##</sup>
Alkaline phosphatase (ALP, IU/L)	87 ± 22	59 ± 23	128 ± 11 <sup>**</sup>	56 ± 26 <sup>##</sup>
Lactate dehydrogenase (LDH, IU/L)	942 ± 483	1,166 ± 744	28,764 ± 8,063 <sup>***</sup>	11,139 ± 5,496 <sup>###</sup>

The results are presented as mean ± S.D.

<sup>\*\*</sup>Denotes significant differences compared with the Saline + Olive oil group ( $p < 0.01$ ).

<sup>\*\*\*</sup>Denotes significant differences compared with the Saline + Olive oil group ( $p < 0.001$ ).

<sup>##</sup>Denotes significant differences compared with the Saline + CCl<sub>4</sub> group ( $p < 0.01$ ).

<sup>###</sup>Denotes significant differences compared with the Saline + CCl<sub>4</sub> group ( $p < 0.001$ ).

<sup>####</sup>Denotes significant differences compared with the Saline + CCl<sub>4</sub> group ( $p < 0.0001$ ).