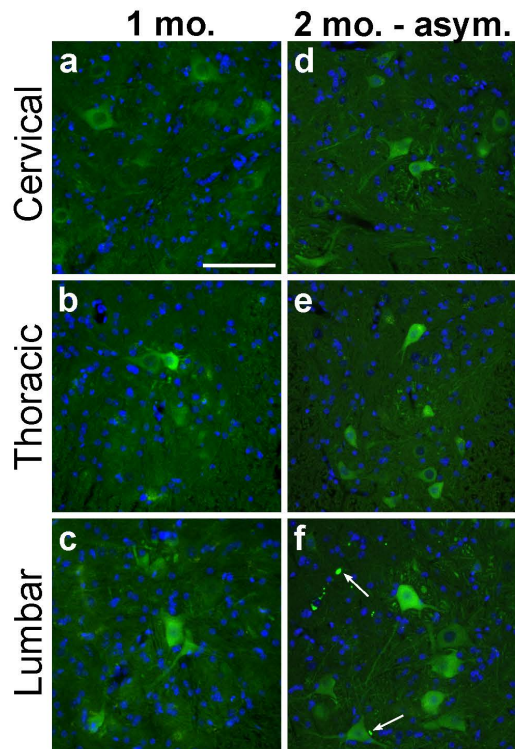


Electronic Supplementary Material 1



ESM1 Lack of YFP deposition in the contralateral spinal cord at early timepoints. **(a-c)** At 1 month p.i., no G85R-SOD1:YFP inclusions were observed at any level of the contralateral spinal cord. In the asymptomatic mice at 2 months p.i. we began to observe pathology in the contralateral lumbar cord **(f)**, however, it was not observed to have spread rostrally to either the thoracic or cervical segments **(d, e)**. *Scale bars* 100 μm .