

Supplementary Information

**Distinct effects of $\beta 1$ integrin on cell proliferation and cellular signaling
in MDA-MB-231 breast cancer cells**

Sicong Hou¹, Tomoya Isaji¹, Qinglei Hang¹, Sanghun Im¹, Tomohiko Fukuda¹ & Jianguo Gu¹

¹Division of Regulatory Glycobiology, Institute of Molecular Biomembrane and Glycobiology,

Tohoku Pharmaceutical University, Sendai, Miyagi, 981-8558, Japan.

Correspondence and requests for materials should be addressed to J.G. (e-mail:

jgu@tohoku-pharm.ac.jp); Tel: +81-22-727-0216; Fax: +81-22-727-0078

Figure 2B

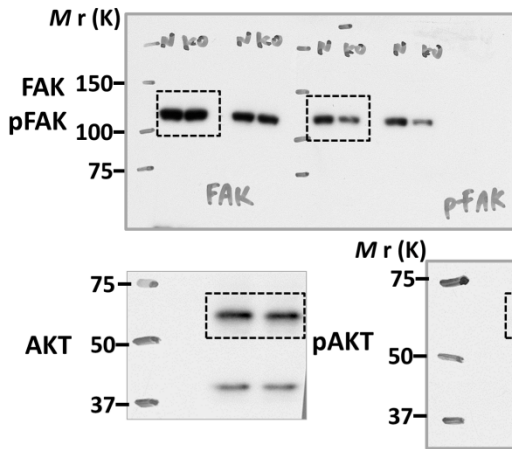


Figure 5A

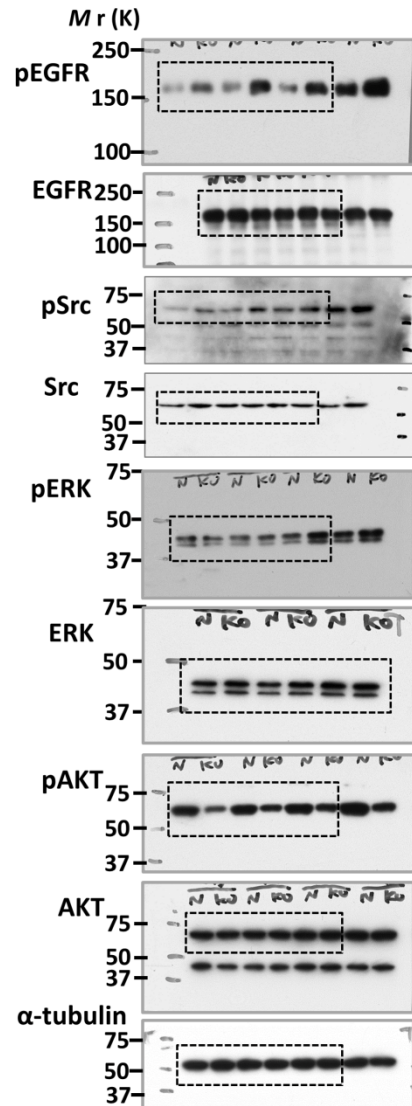


Figure 5D

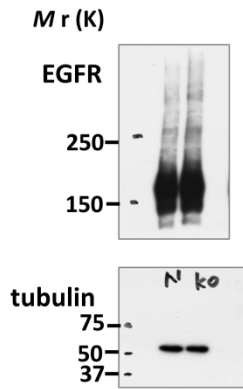
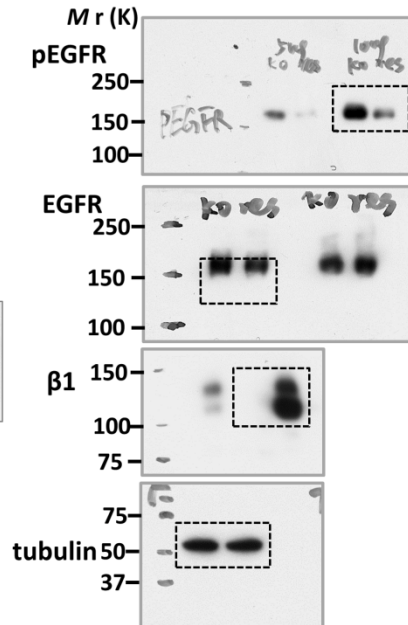


Figure 6A



Supplementary Figure. Uncropped scans for the main western blots illustrated in Fig.2, 5 and 6.

Supplementary Figure: Uncropped, full-size scans of western blots

Uncropped scans for the main western blots illustrated in Fig.2, 5 and 6.