

Supplementary Information

Allelopathic interactions between the brown algal genus *Lobophora* (Dictyotales, Phaeophyceae) and scleractinian corals

Christophe Vieira, Olivier P. Thomas, Gérald Culioli, Grégory Genta-Jouve, Fanny Houlbreque, Julie Gaubert, Olivier De Clerck, Claude E. Payri

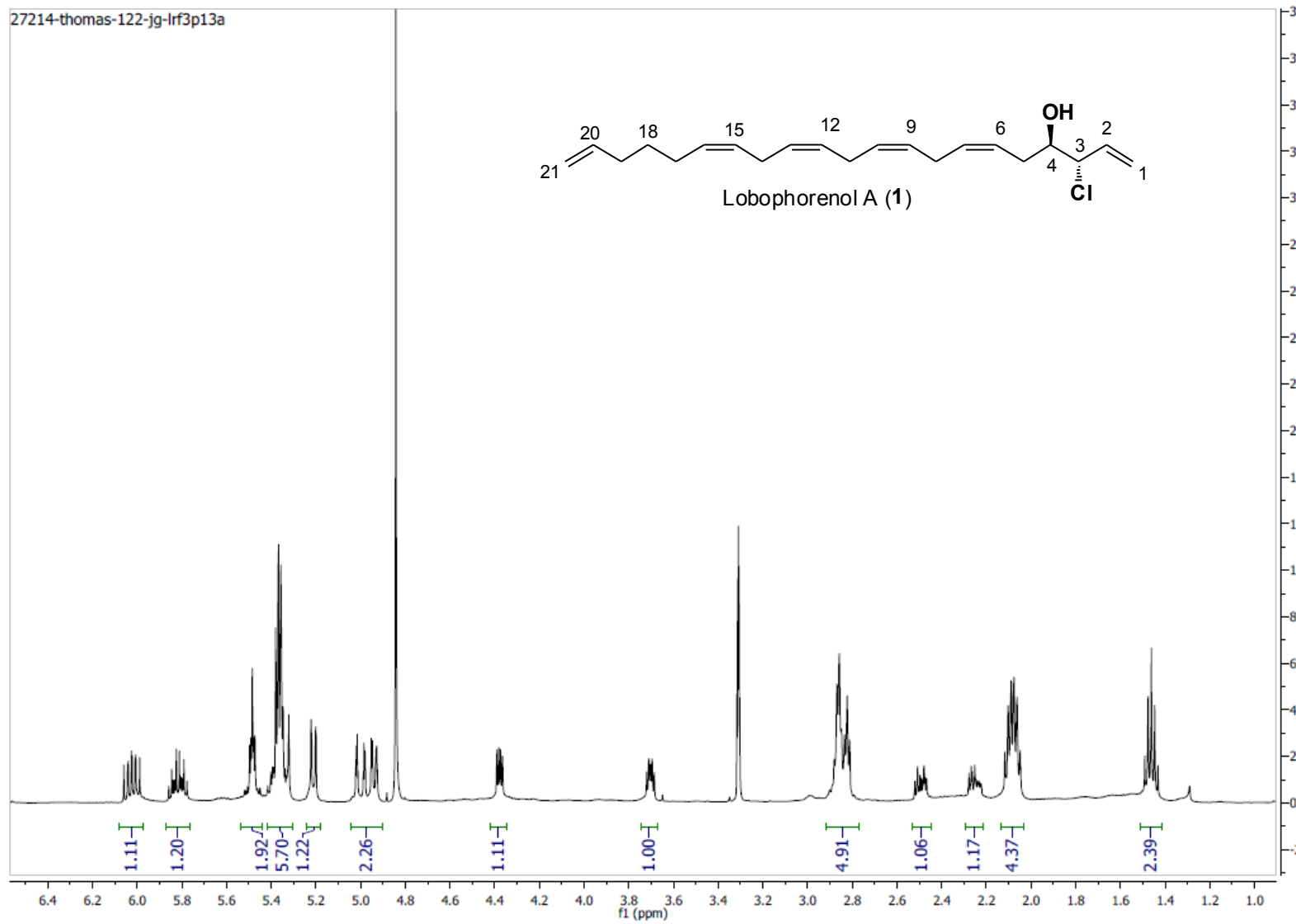
NMR spectra of compounds 1-3

HR-(+)ESIMS spectra of compounds 1-3

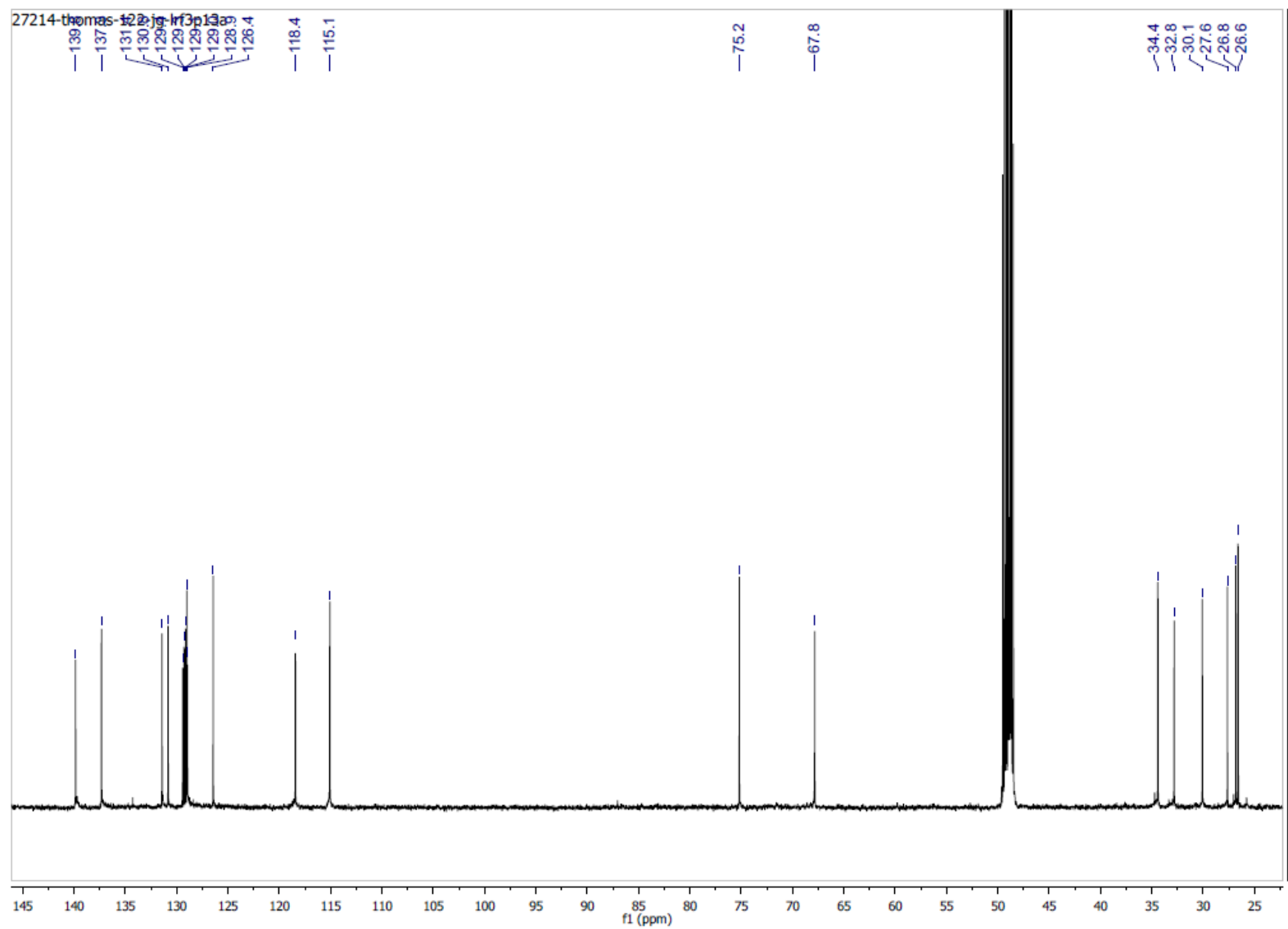
Assessment of the relative seafloor cover and quantification of *Lobophora*-corals association

Sampling locations of *Lobophora* species in New Caledonia

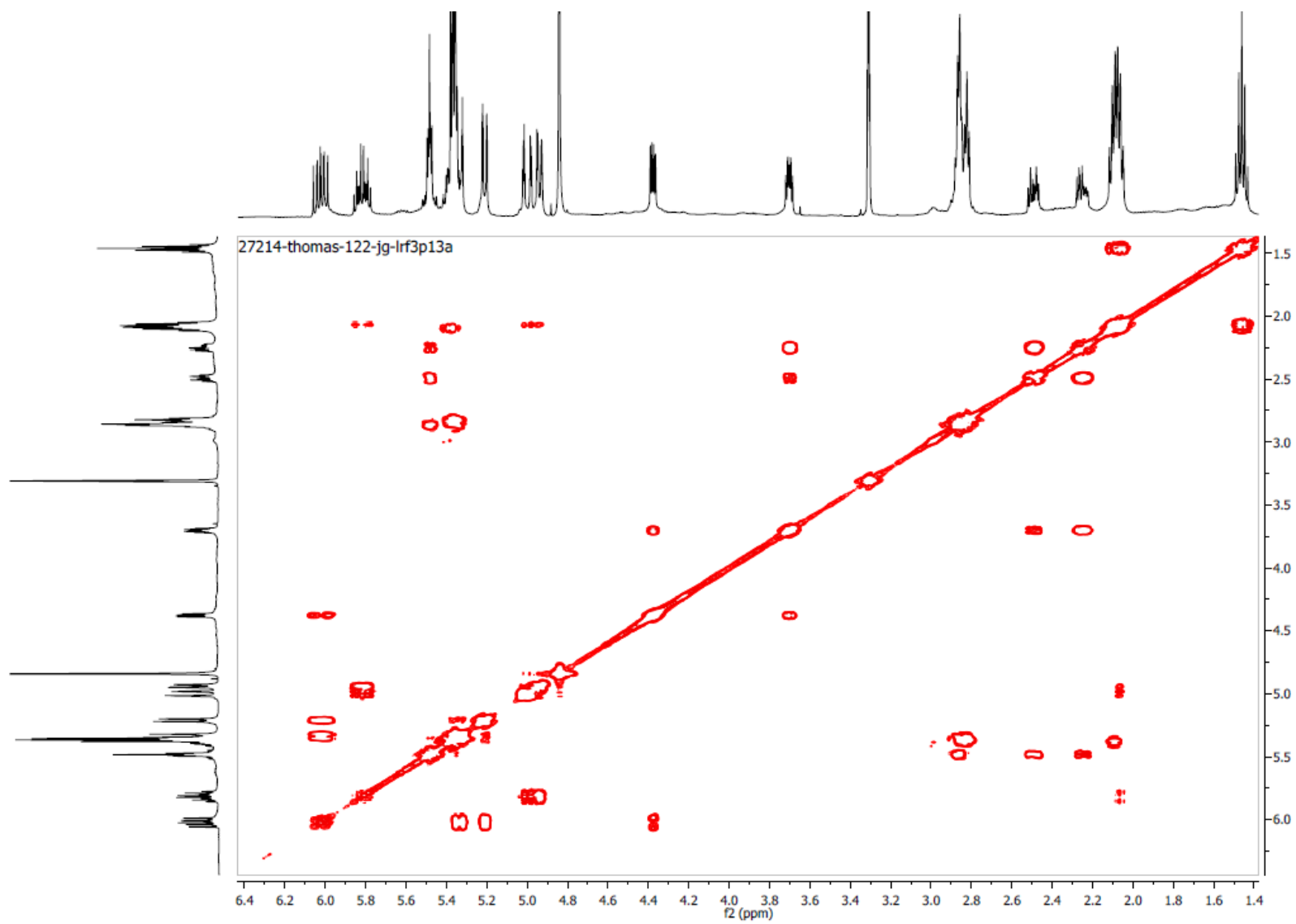
Picture of *in situ* bioassays.



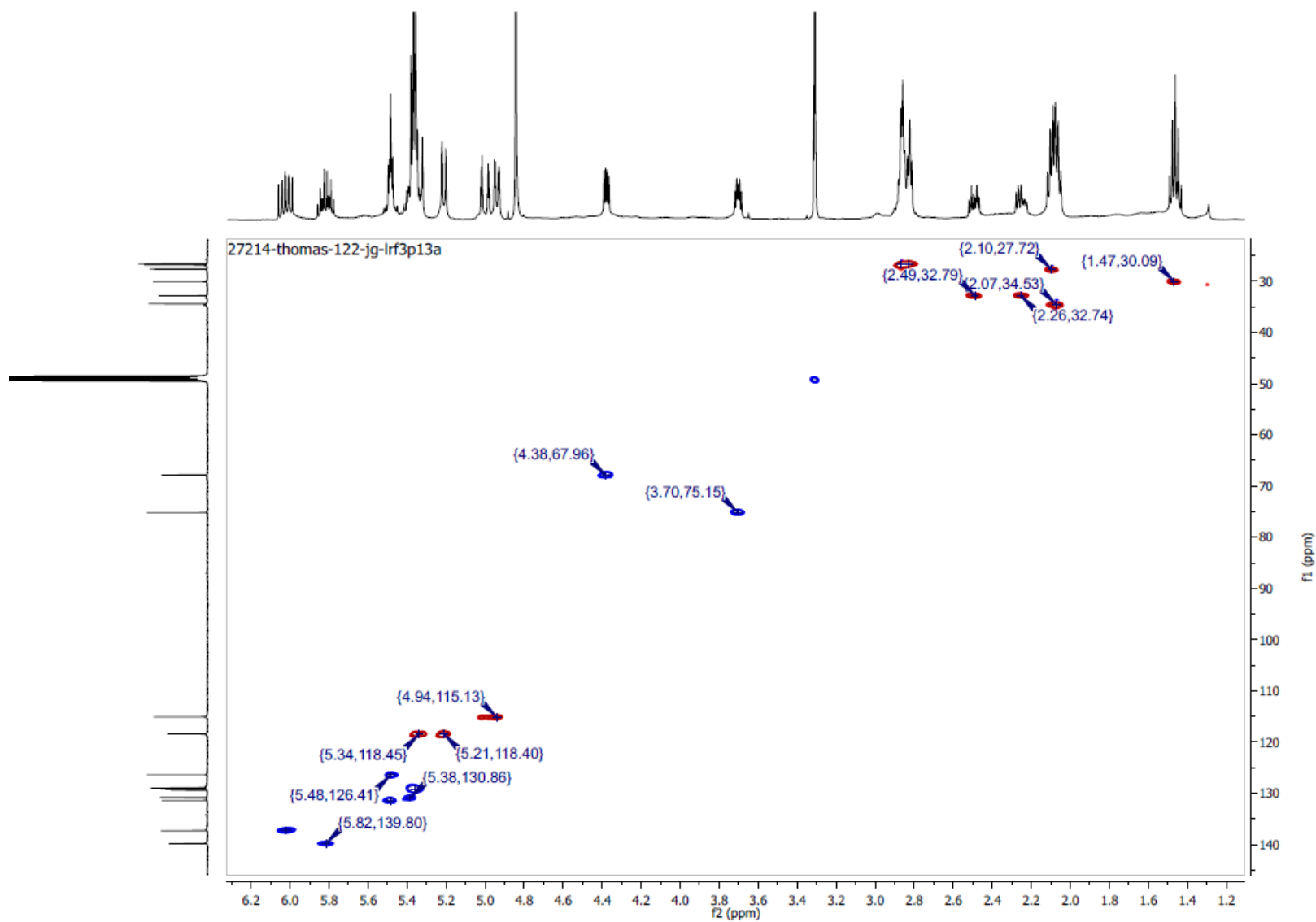
^1H NMR spectrum of **1** in CD_3OD at 500 MHz



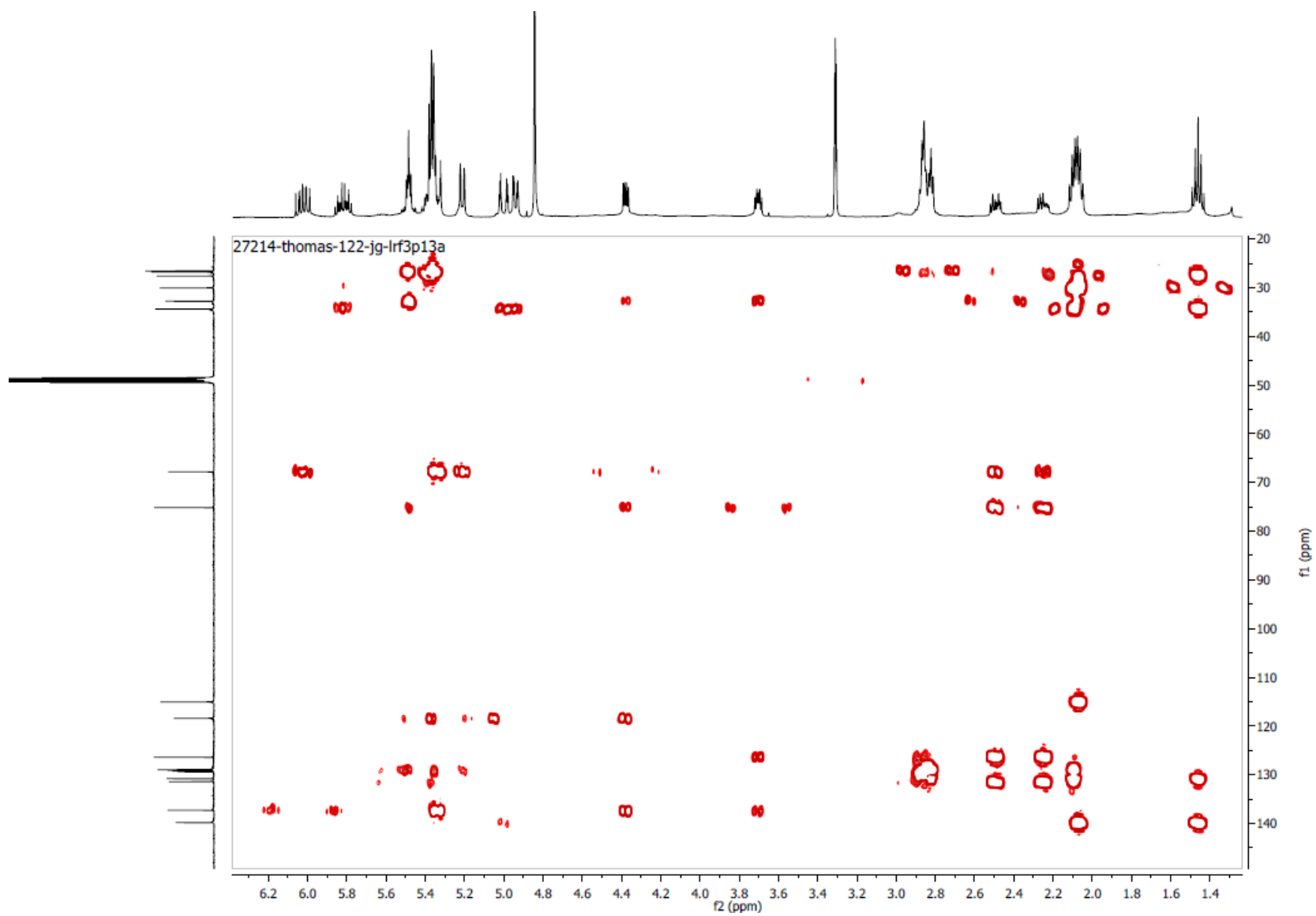
^{13}C NMR spectrum of **1** in CD_3OD at 125 MHz



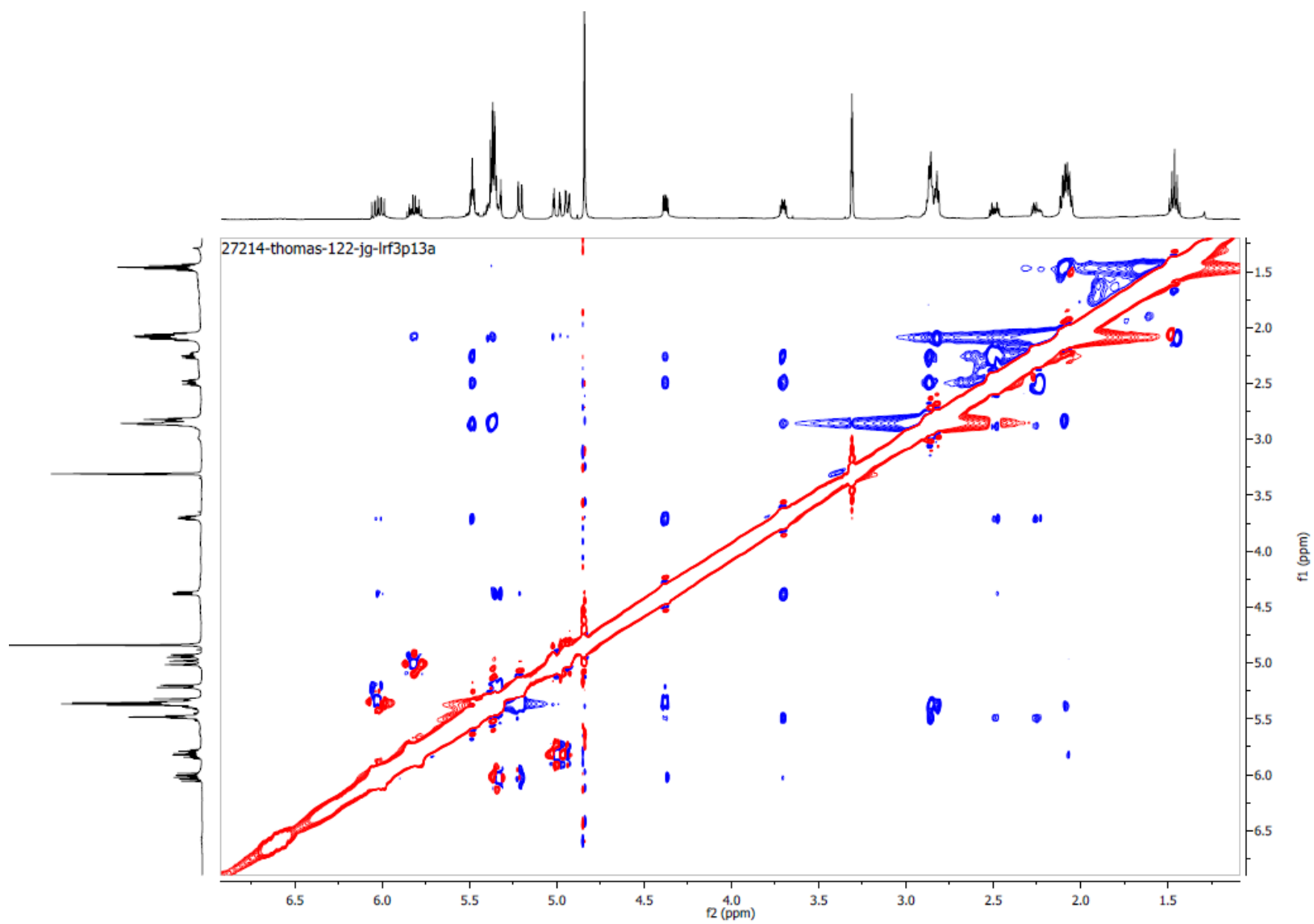
COSY NMR spectrum of **1** in CD₃OD (500 MHz)



HSQC NMR spectrum of **1** in CD₃OD (500 MHz)



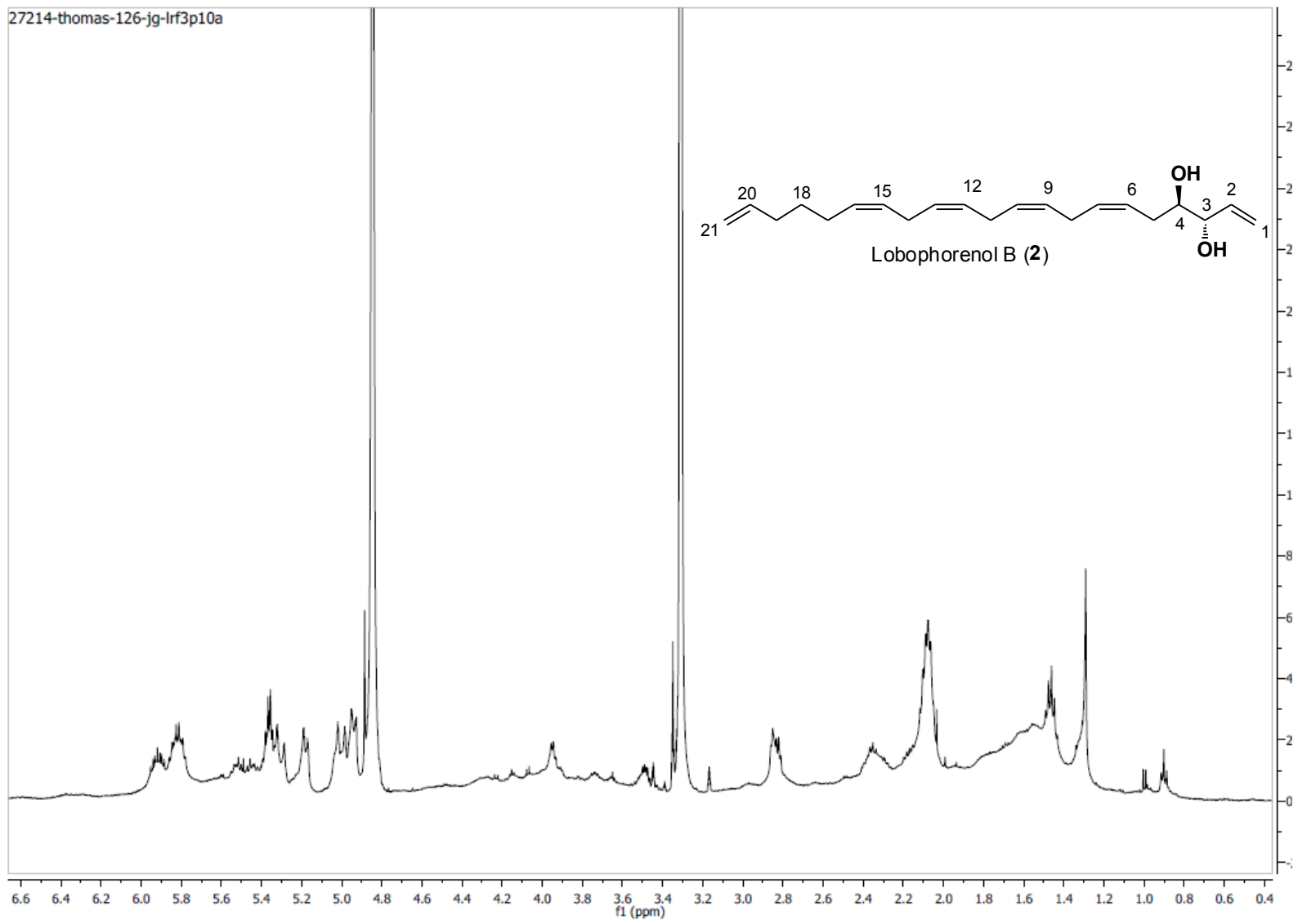
HMBC NMR spectrum of **1** in CD₃OD (500 MHz)



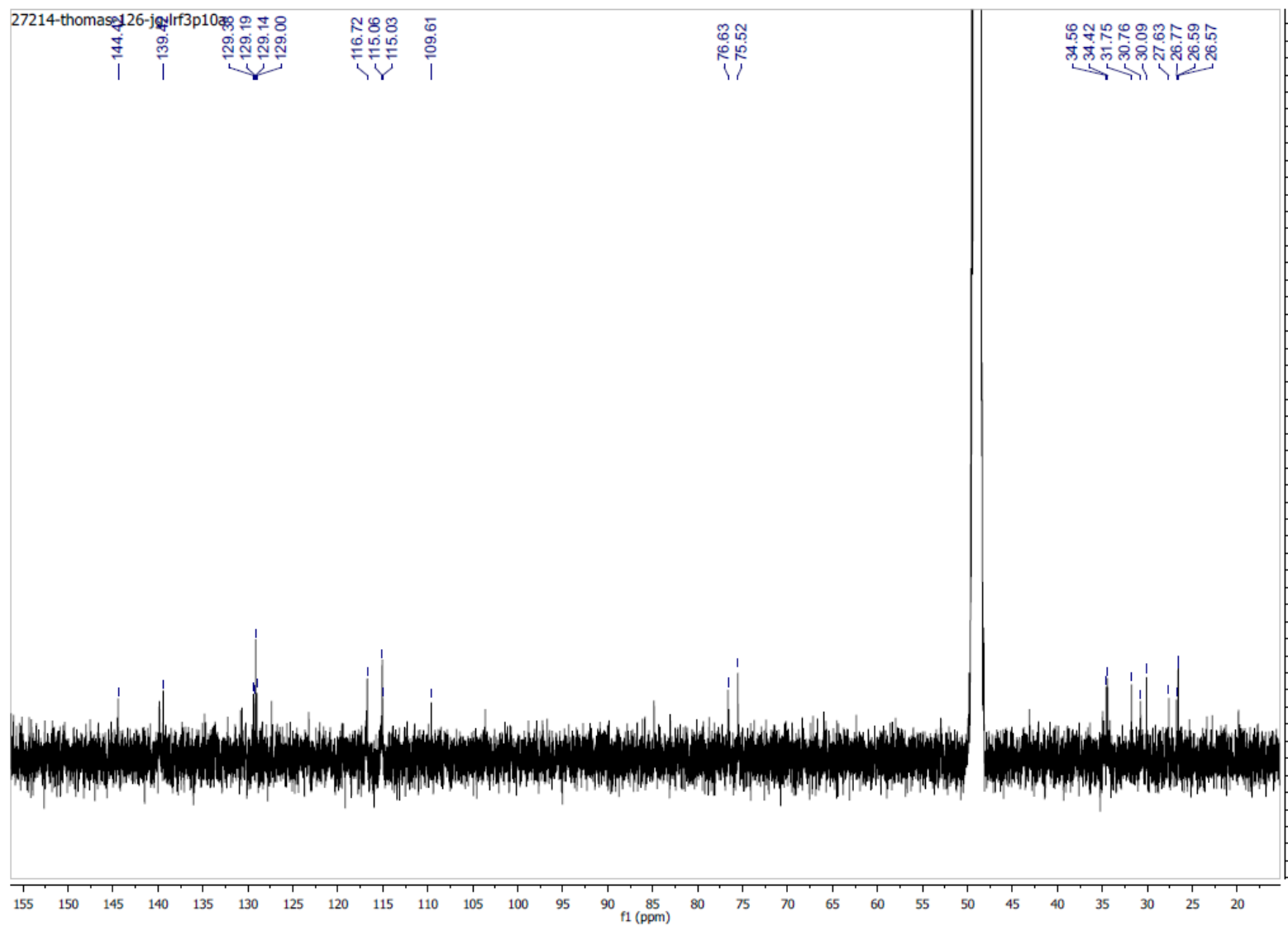
NOESY NMR spectrum of **1** in CD₃OD (500 MHz)



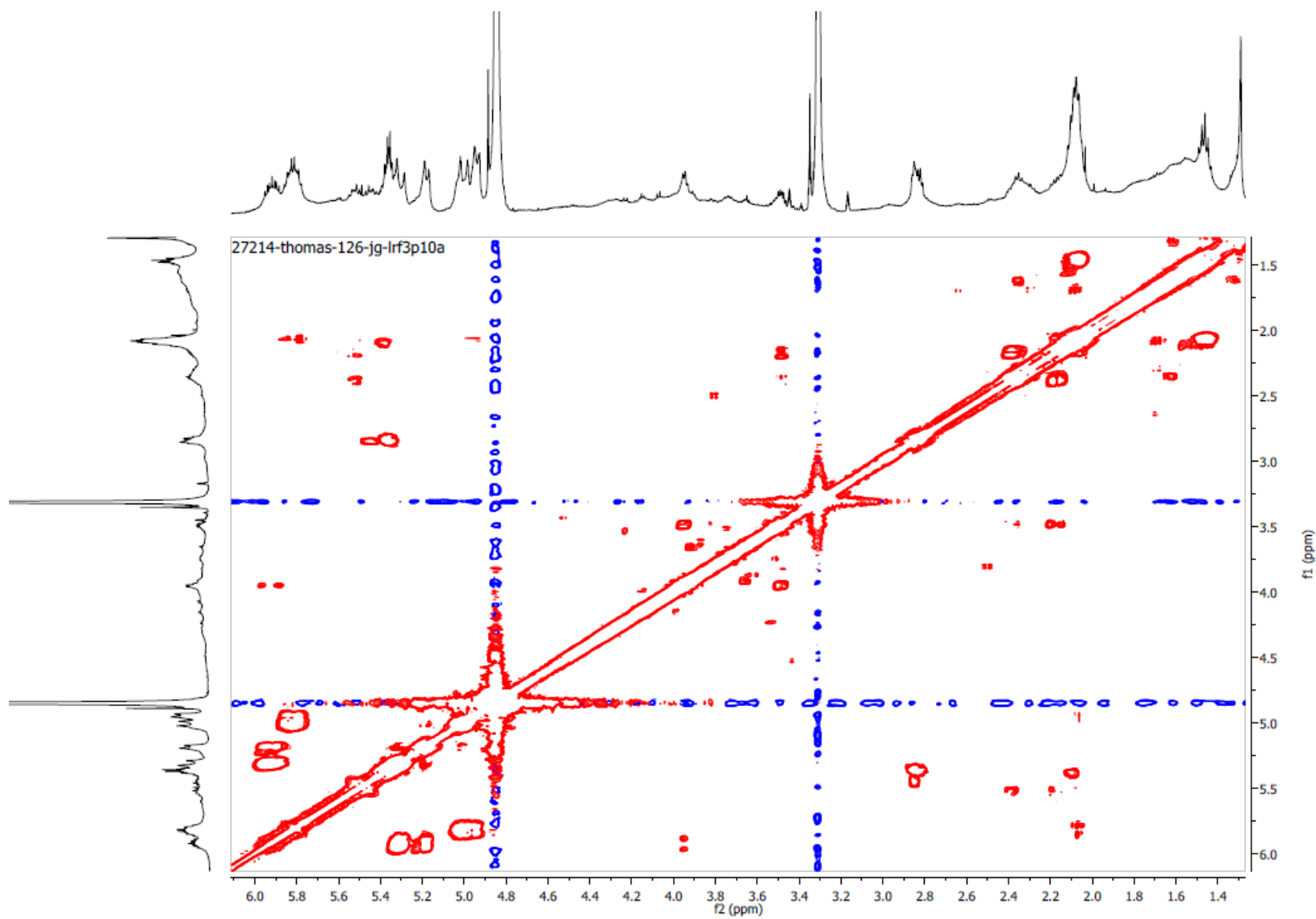
HR-(+)ESIMS spectrum of **1**



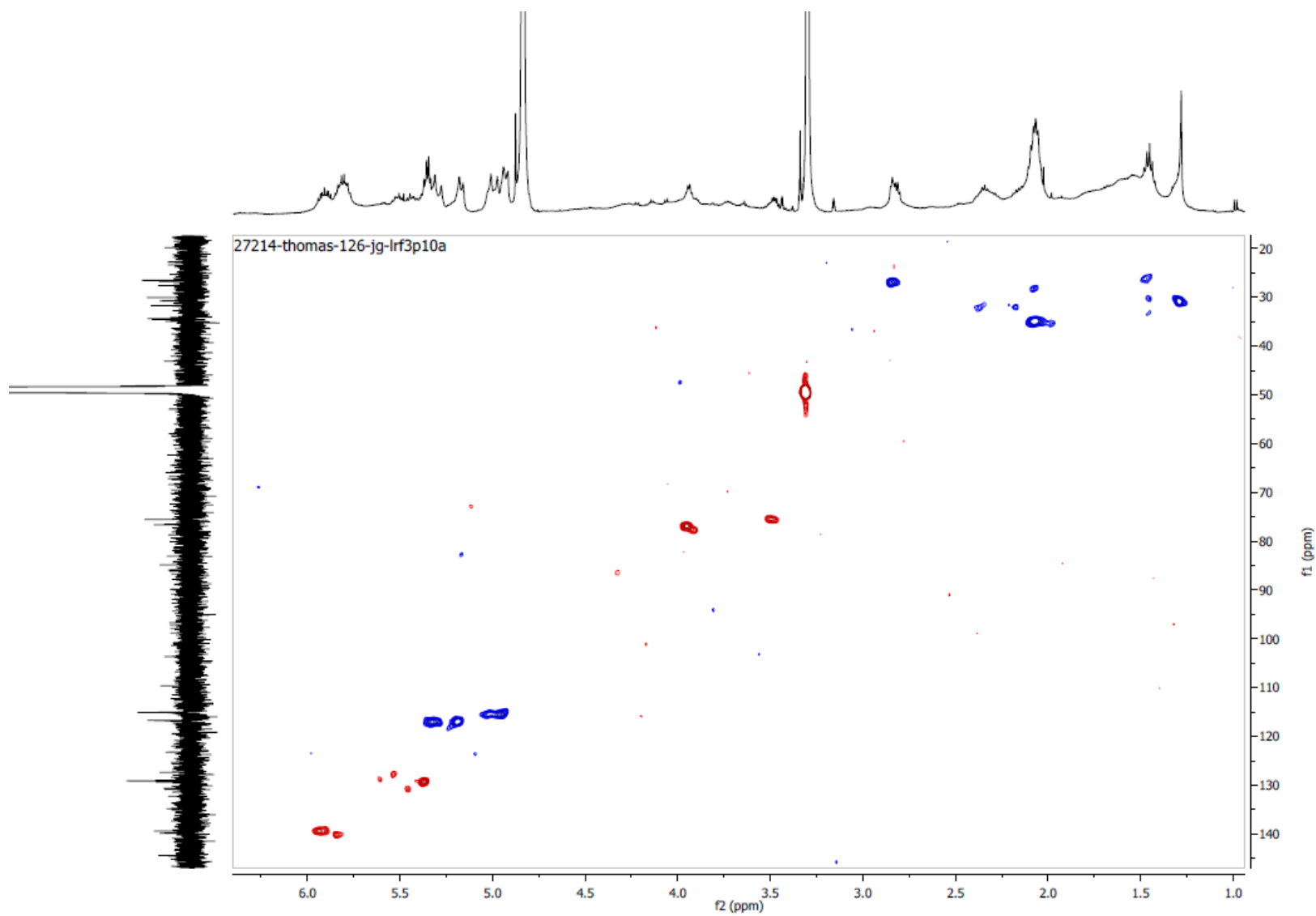
^1H NMR spectrum of **2** in CD_3OD (500 MHz)



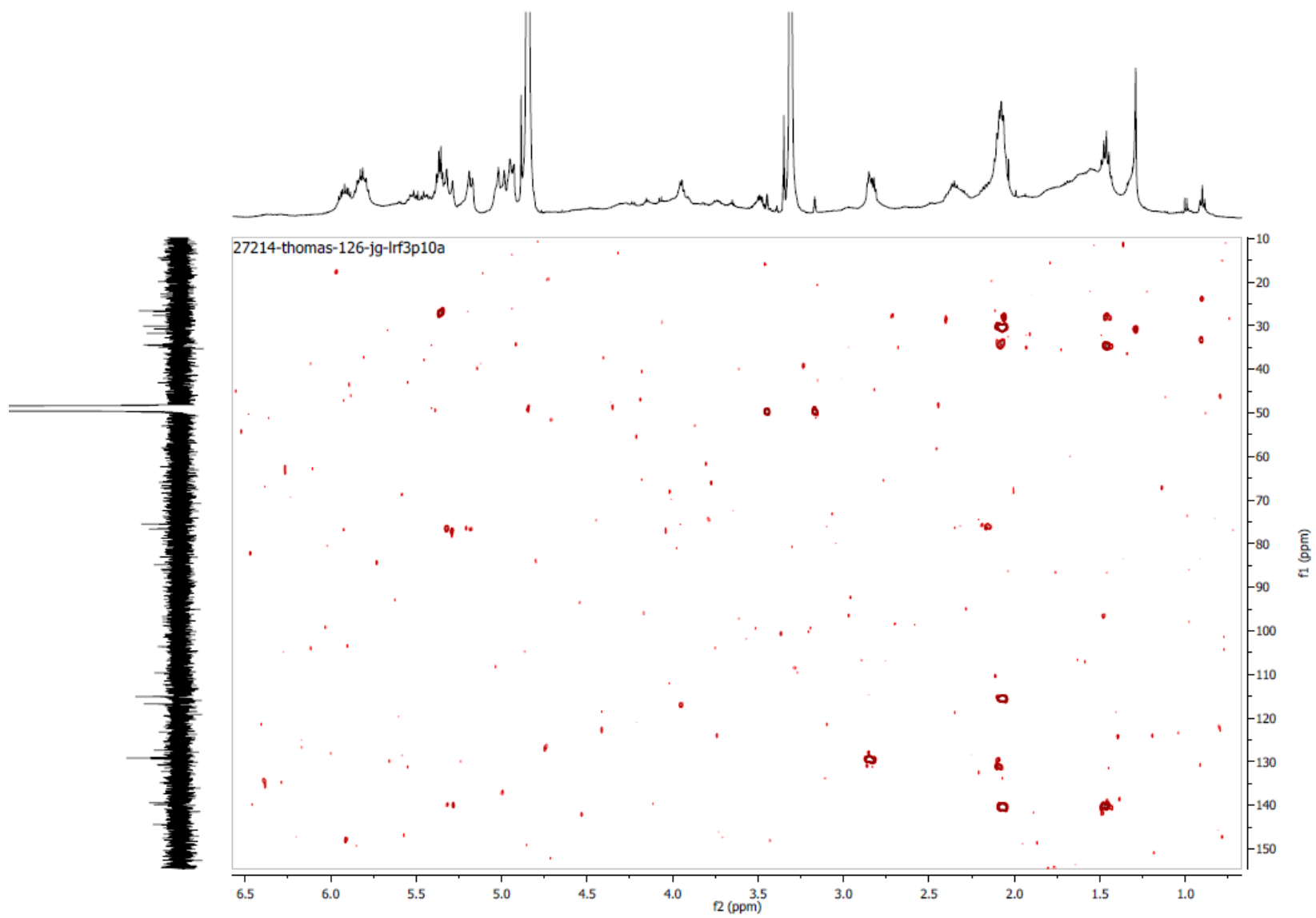
^{13}C NMR spectrum of **2** in CD_3OD (125 MHz)



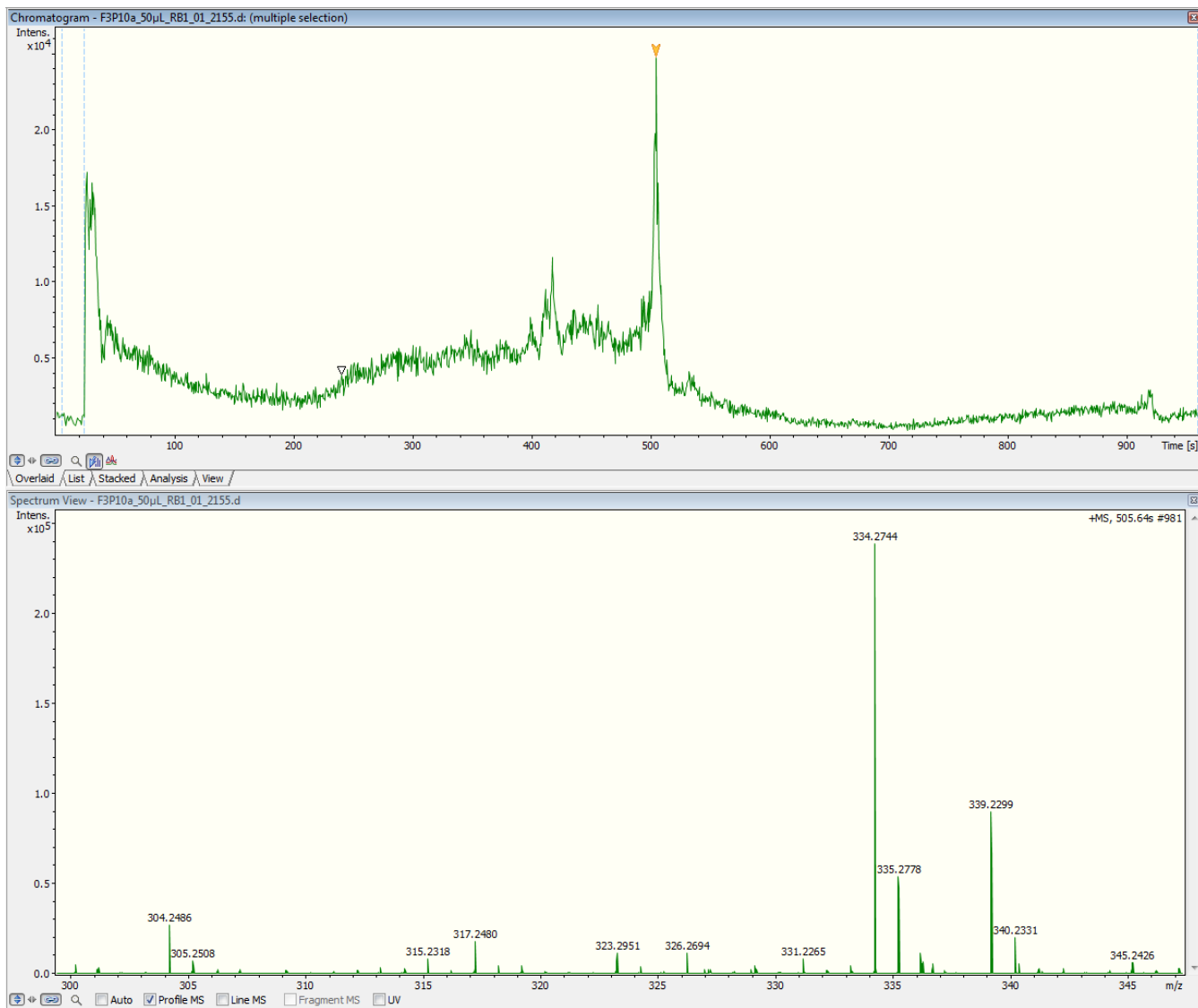
COSY NMR spectrum of **2** in CD₃OD (500 MHz)



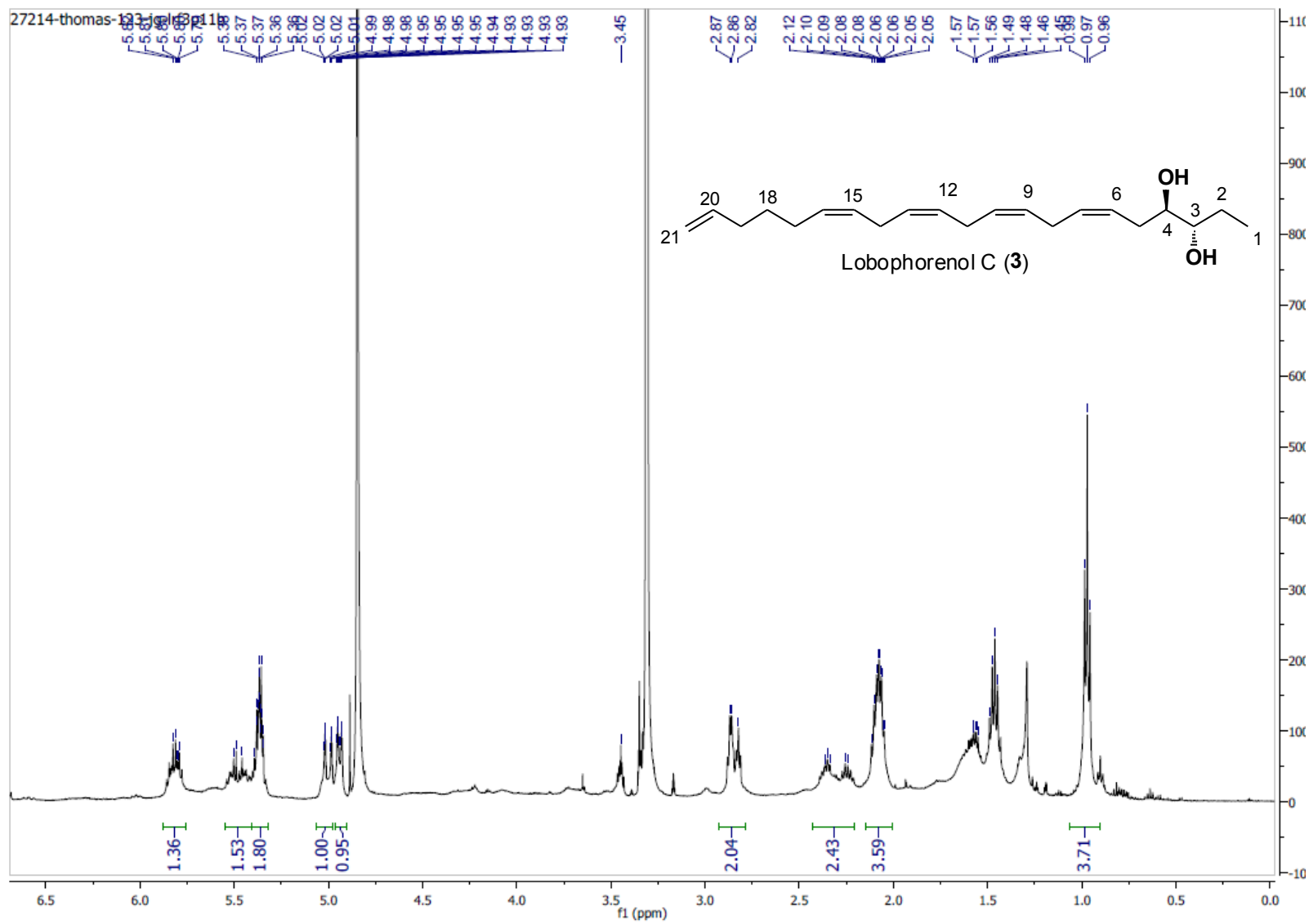
HSQC NMR spectrum of **2** in CD₃OD (500 MHz)



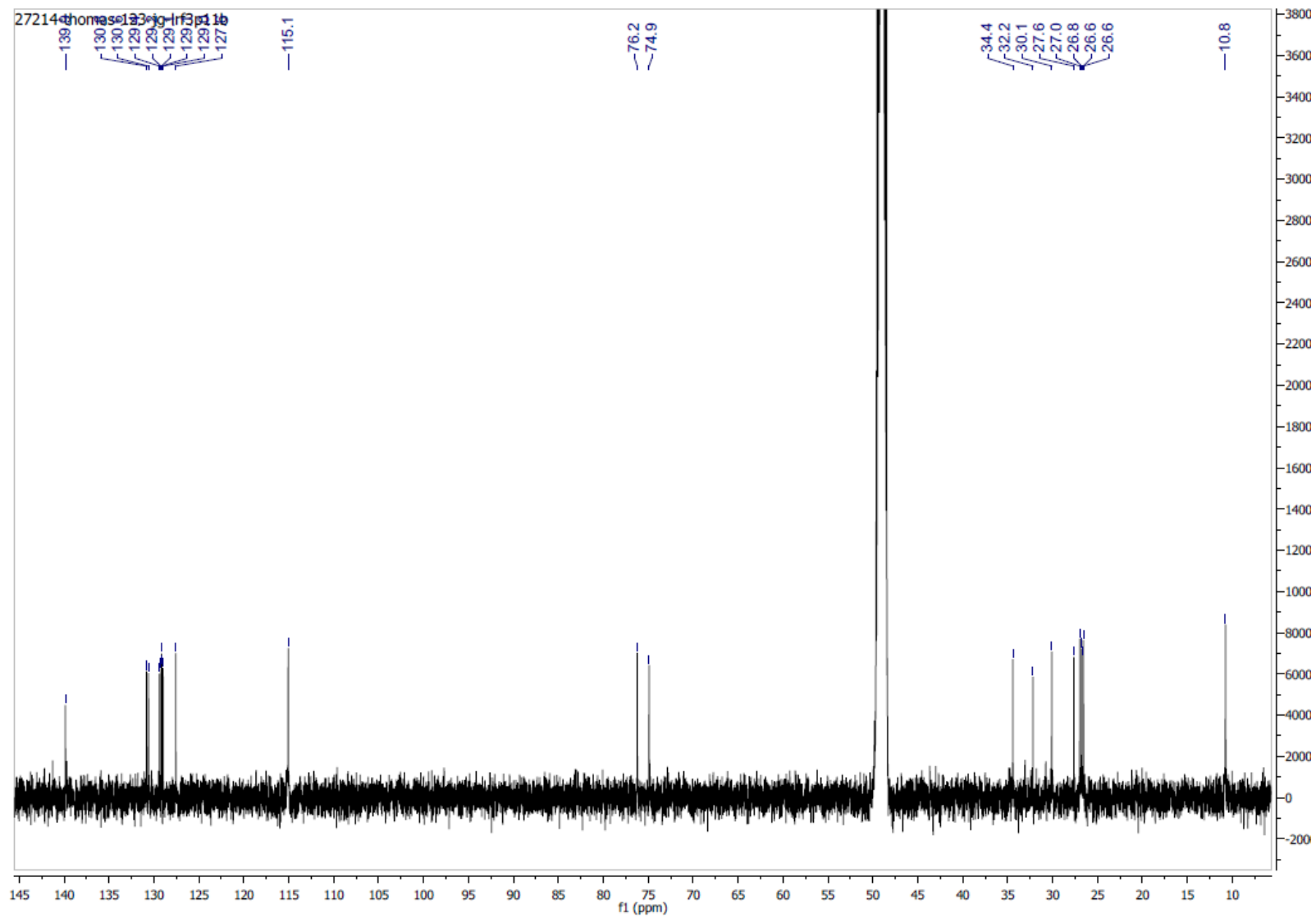
HMBC NMR spectrum of **2** in CD₃OD (500 MHz)



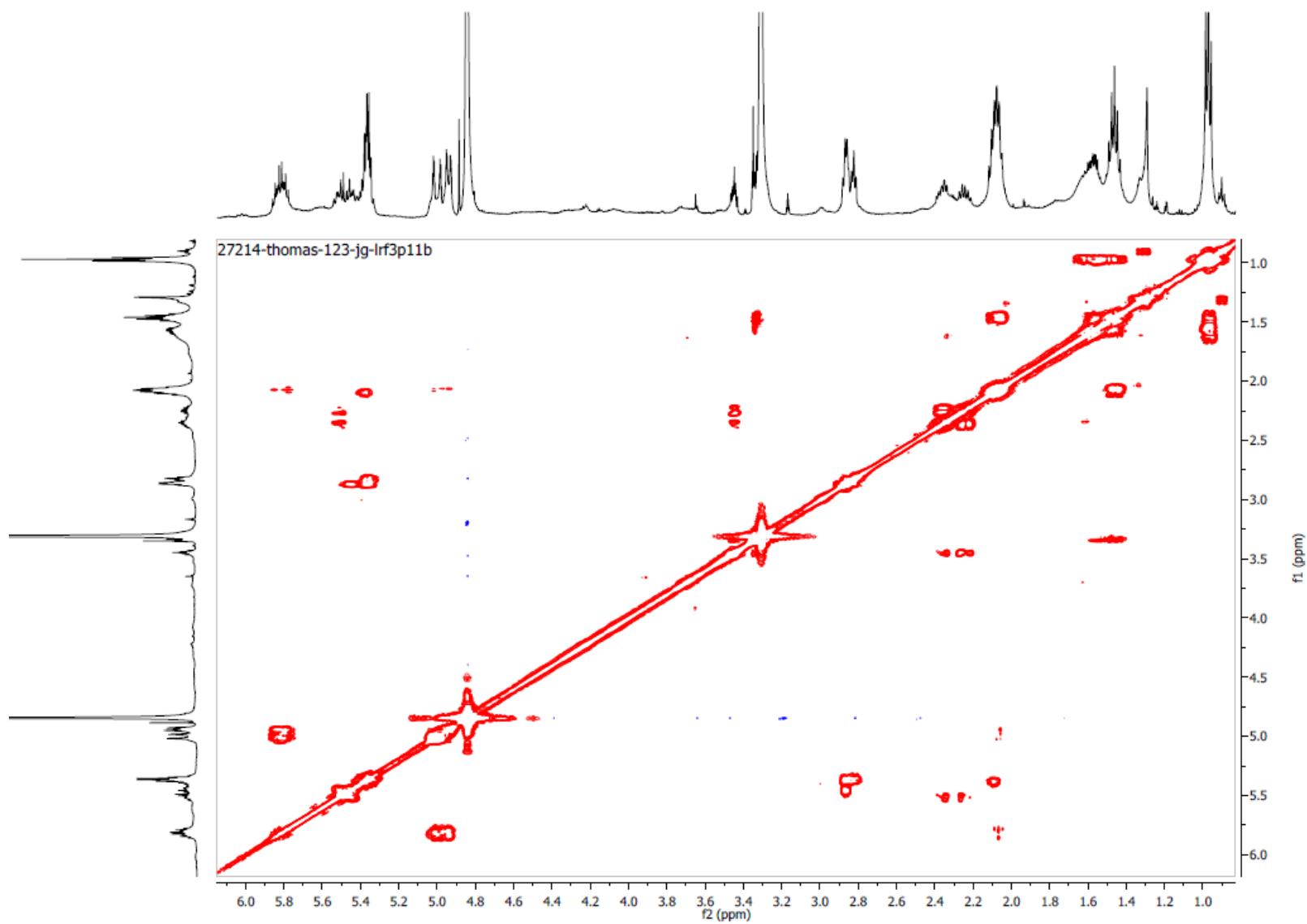
HR-(+)ESIMS spectrum of **2**



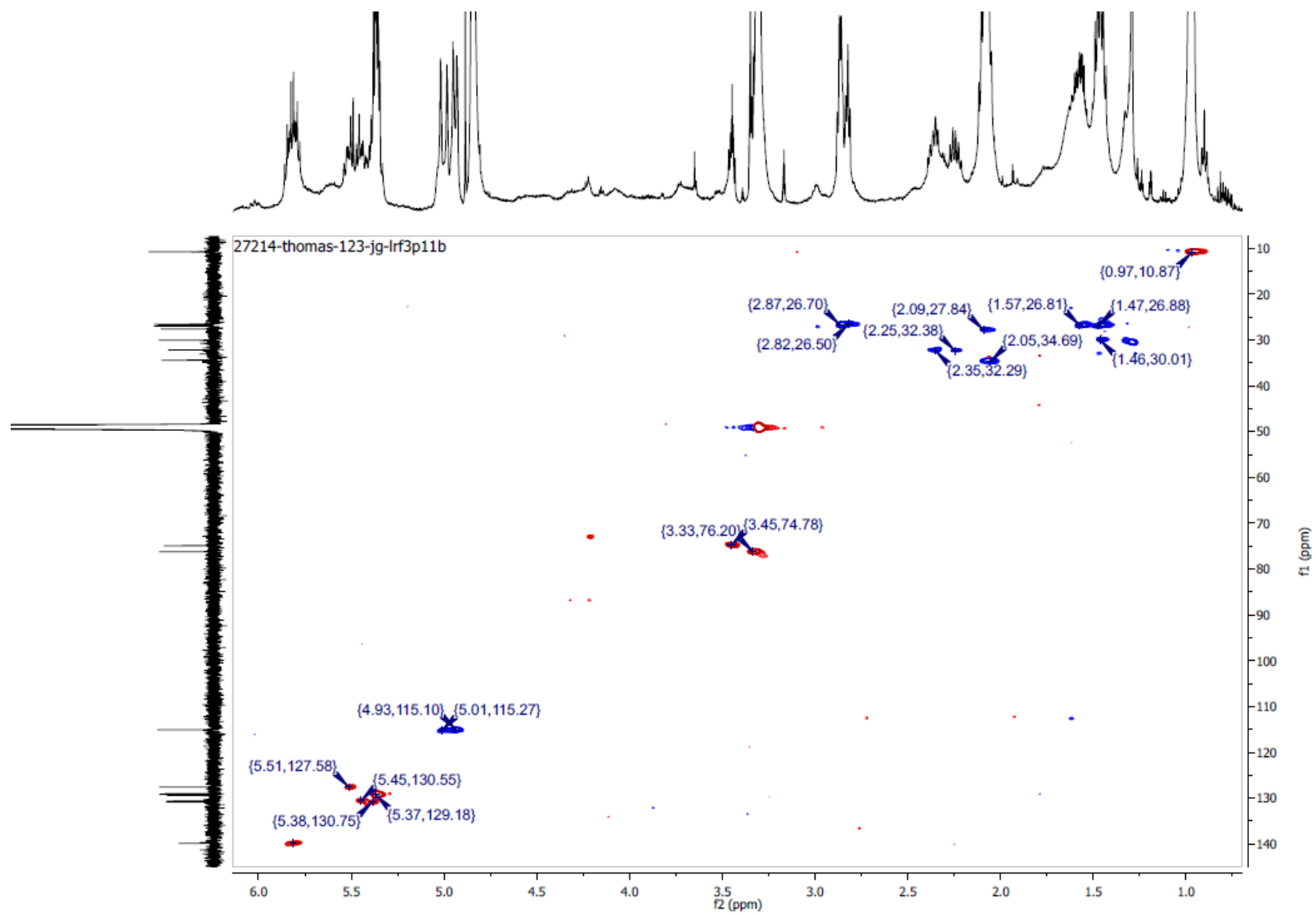
^1H NMR spectrum of **3** in CD_3OD (500 MHz)



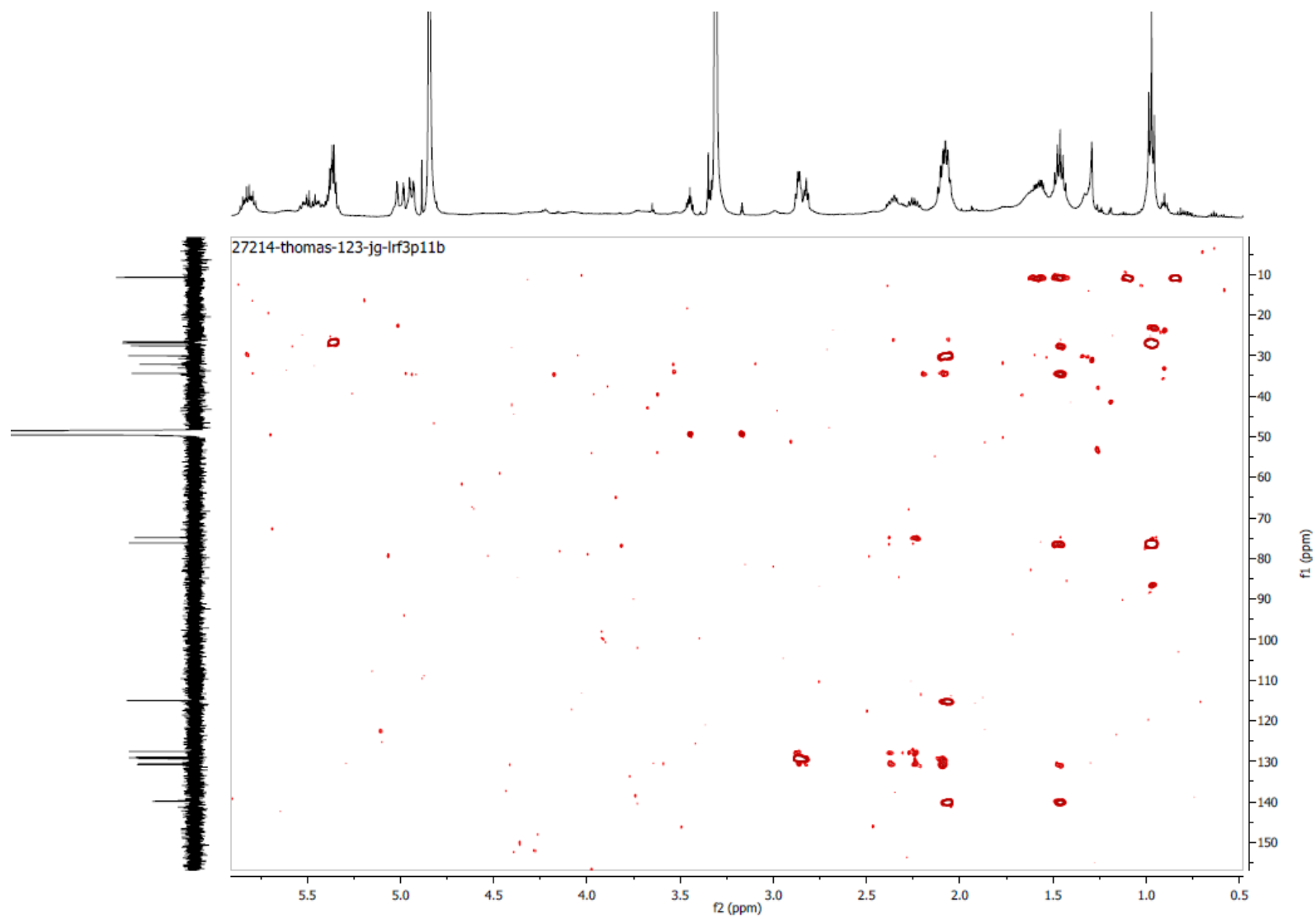
^{13}C NMR spectrum of **3** in CD_3OD (125 MHz)



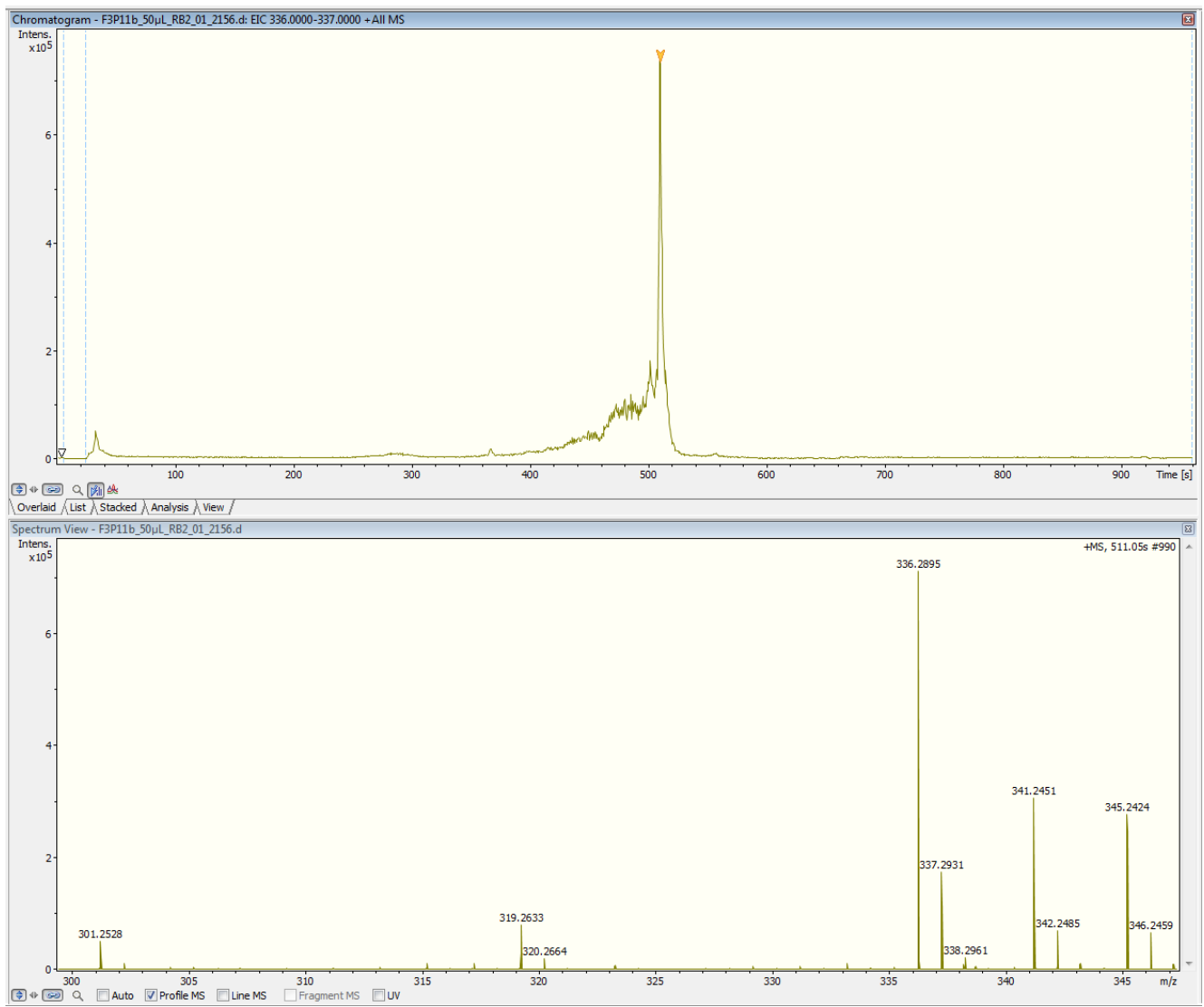
COSY NMR spectrum of **3** in CD₃OD (500 MHz)



HSQC NMR spectrum of **3** in CD₃OD (500 MHz)



HMBC NMR spectrum of **3** in CD₃OD (500 MHz)



HR-(+)ESIMS of **3**

Assessment of the relative seafloor cover and quantification of *Lobophora*-corals association

Relative seafloor cover (i.e. corals, macroalgae, other benthic organisms) and quantification of *Lobophora*-corals association, assessed with the horizontal belt transect, was determined using the digital image processing software Coral Point Count with Excel extensions. Individual pictures were sub-divided into 4 rows and 4 columns, and each cell was populated with 1 random point lying within the cell borders. The circle with crosshairs with a diameter of 150 pixels was chosen as data point object shape. The feature lying under the circle-crosshairs was identified and recorded. If the crosshairs fell on a coral or *Lobophora*, the occurrence of the alga in direct contact with the coral within the circle was inspected and recorded.

Table S1. Sampling locations of *Lobophora* species in New Caledonia.

Species	Location	Reef type	Latitude	Longitude	Substrate
<i>Lobophora abscondita</i>	Bovis	Fringing reef	22° 13.488'S	166° 20.775'E	Coral
<i>Lobophora crassa</i>	Ricaudy	Fringing reef	22° 18.914'S	166° 27.453'E	Rubble
<i>Lobophora dimorpha</i>	Crouy	Patch reef	22° 21.919'S	166° 21.898'E	Coral
<i>Lobophora hederacea</i>	Abore	Inner barrier reef	22° 27.022'S	166° 22.441'E	Coral
<i>Lobophora monticola</i>	Saint Marie	Islet reef	22° 17.863'S	166° 28.898'E	Coral
<i>Lobophora nigrescens</i>	Crouy	Patch reef	22° 21.114'S	166° 21.084'E	Sand
<i>Lobophora rosacea</i>	Ricaudy	Fringing reef	22° 18.919'S	166° 27.463'E	Coral
<i>Lobophora undulata</i>	Larègnère	Islet reef	22° 19.548'S	166° 18.948'E	Coral



Figure S1. *In situ* allelopathic bioassays. Photo credit: Christophe Vieira