

1  
2  
3  
4  
5  
6  
7  
8  
9  
10  
11  
12  
13

**SUPPLEMENTAL FIGURES**

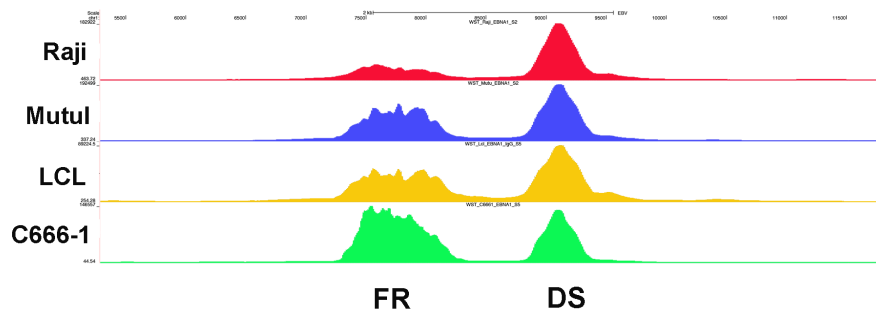
**Identification of *MEF2B*, *EBF1*, and *IL6R* as direct gene targets of EBNA1 critical for EBV-infected B-lymphocyte survival**

Italo Tempera<sup>2</sup>, Alessandra De Leo<sup>1</sup>, Andrew Kossenkov<sup>1</sup>, Matteo Cesaroni<sup>2</sup>, Hui Song<sup>1</sup>, Noor Dawaney<sup>1</sup>, Louise Showe<sup>1</sup>, Fang Lu<sup>1</sup>, Priyankara Wikramasinghe<sup>1</sup>, and Paul M. Lieberman<sup>1,3</sup>

14 **Supplementary Figures**

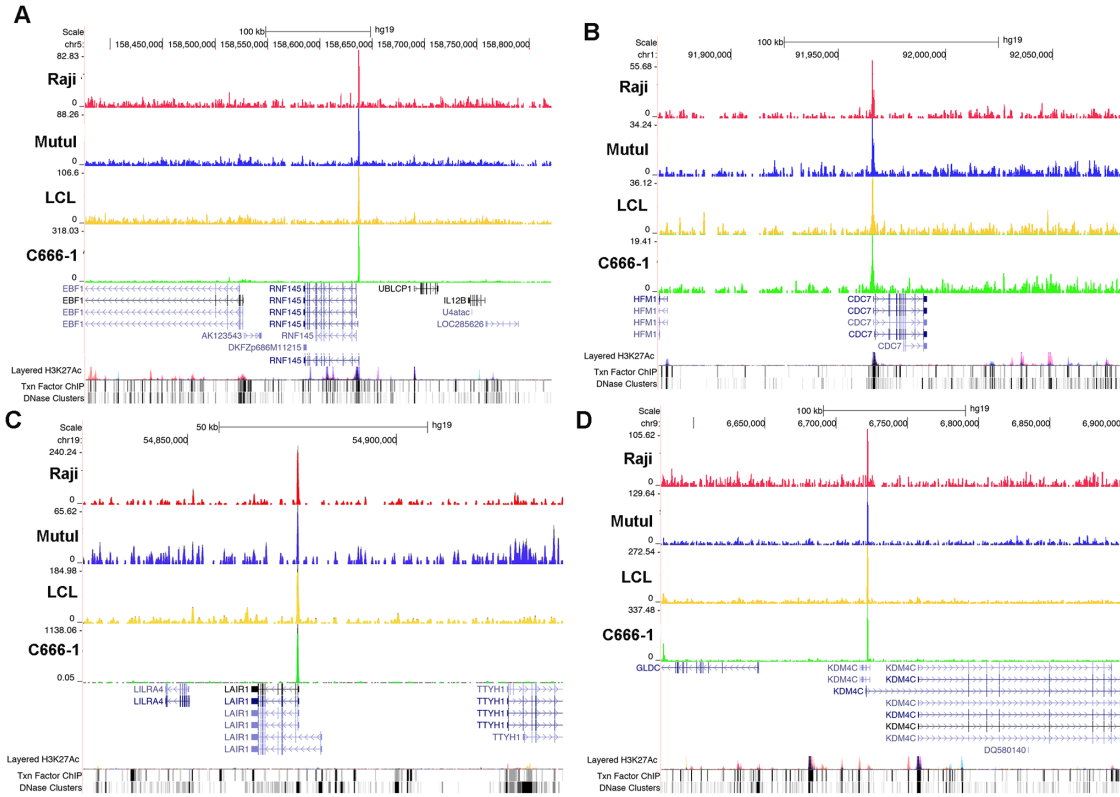
15

16 **Supplemental Figure S1.** ChIP-Seq profile of EBNA1 binding to OriP in 4 different EBV positive  
17 cell lines. Note EBNA1 binding to DS relative to FR is different among the cell types.  
18



19  
20  
21  
22  
23  
24

**Supplemental Figure S2.** ChIP Seq profiles of EBNA1 cellular genes for (A) RNF145/EBF1, (B) CDC7, (C) LAIR1, and (D) KDM4C.



25  
26  
27  
28  
29

30  
31  
32  
33**TABLE S1. List of shRNA targeting sequences and clones from TRC library.**

shEBNA1.1+	CCGG AA GGG TAG AGG ACG TGA AAG A CTCGAG T CTT TCA CGT CCT CTA CCC TT TTTTGG
shEBNA1.1-	AATTCAAAAA AA GGG TAG AGG ACG TGA AAG A CTCGAG T CTT TCA CGT CCT CTA CCC TT
shEBNA1.2+	CCGG AA GAA CAT TGC AGA AGG TTT A CTCGAG T AAA CCT TCT GCA ATG TTC TT TTTTGG
shEBNA1.2-	AATTCAAAAA AA GAA CAT TGC AGA AGG TTT A CTCGAG T AAA CCT TCT GCA ATG TTC TT
shEBNA1.3+	CCGGAAGGATCAGGGCCAAGACATACTCGAGTATGTCTTGGCCCTGATCCTTTTTTTTG
shEBNA1.3-	AATTCAAAAAAAGGATCAGGGCCAAGACATACTCGAGTATGTCTTGGCCCTGATCCTT
shEBNA1.4+	CCGGAATGGAAAGCATCGTGGTCAACTCGAGTTGACCACGATGCTTTCCATTTTTTTTG
shEBNA1.4-	AATTCAAAAAAATGGAAAGCATCGTGGTCAACTCGAGTTGACCACGATGCTTTCCATT
shEBNA1.5+	CCGGAACGGAGATGACGGAGATGAACTCGAGTTCATCTCCGTCATCTCCGTTTTTTTTG
shEBNA1.5-	AATTCAAAAAACGGAGATGACGGAGATGAACTCGAGTTCATCTCCGTCATCTCCGTT
shMEF2B.1	TRCN0000015738
shMEF2B.2	TRCN0000015742
shIL6R-1	TRNC0000058778
shIL6R-2	TRNC0000058782
shEBF1-1	TRCN0000013831
shEBF1-2	TRCN0000013828