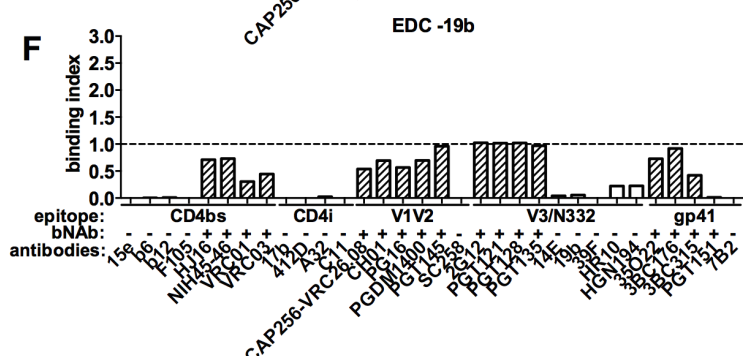
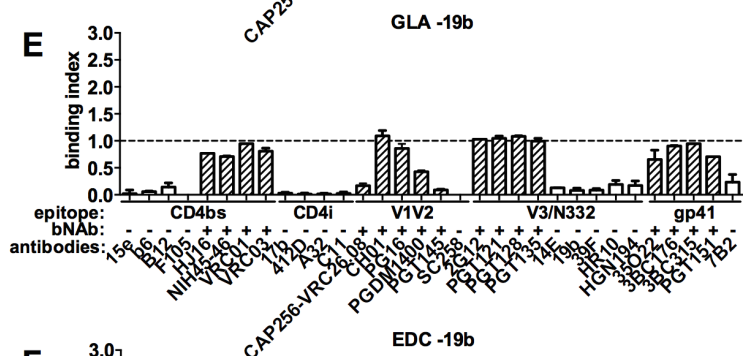
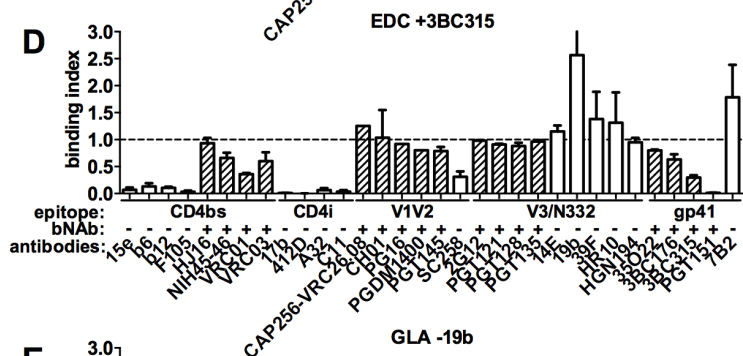
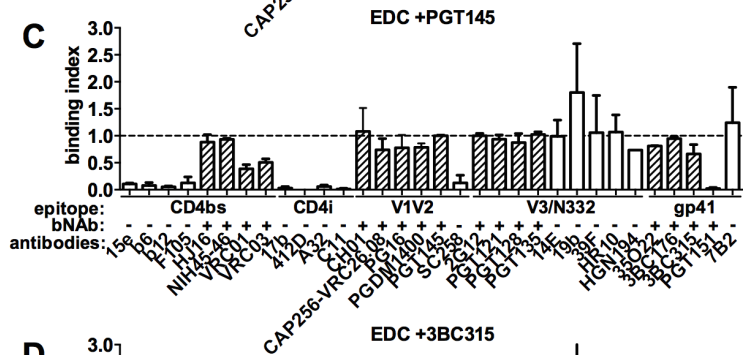
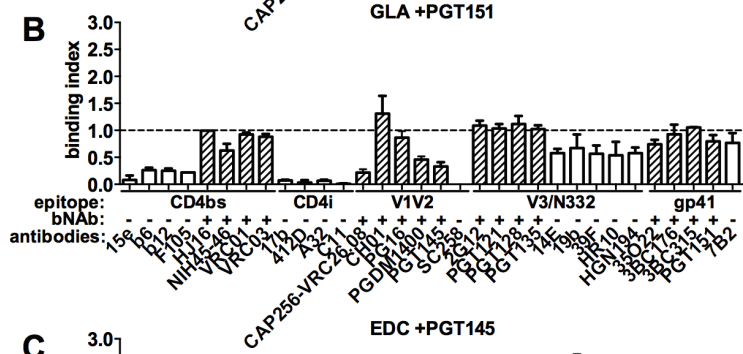
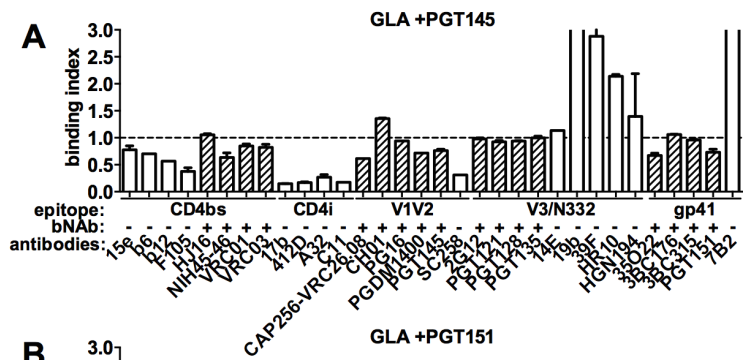


mAb	GLA	GLA +145	GLA +151	GLA -19b	EDC	EDC +145	EDC +315	EDC -19b
15e	0.21	0.78	0.08	0.04	0.06	0.11	0.10	0.00
b6	0.46	0.70	0.26	0.07	0.01	0.08	0.17	0.00
B12	0.28	0.57	0.25	0.09	0.01	0.05	0.09	0.01
F105	0.31	0.38	0.22	0.00	0.13	0.13	0.05	0.00
HJ16	0.84	1.05	0.99	0.77	0.87	0.88	0.86	0.71
NIH45-46	0.61	0.64	0.62	0.71	0.72	0.93	0.73	0.73
VRC01	0.86	0.85	0.92	0.95	0.39	0.39	0.38	0.31
VRC03	0.94	0.82	0.88	0.77	0.20	0.51	0.72	0.45
17b	0.12	0.15	0.07	0.03	0.07	0.03	0.01	0.00
412D	0.20	0.17	0.03	0.00	0.27	0.00	0.00	0.00
A32	0.15	0.27	0.06	0.01	0.02	0.05	0.09	0.02
C11	0.19	0.17	0.01	0.02	0.18	0.01	0.02	0.00
CAP256- VRC26.08	0.13	0.61	0.22	0.17	0.60	0.74	1.25	0.54
CH01	1.06	1.36	1.31	1.02	0.31	1.08	1.40	0.69
PG16	0.74	0.94	0.86	0.86	0.49	0.78	0.92	0.57
PGDM1400	0.36	0.72	0.46	0.43	0.67	0.79	0.80	0.70
PGT145	0.27	0.76	0.33	0.09	0.86	1.00	0.84	0.96
SC258	0.00	0.31	0.00	0.00	0.07	0.13	0.24	0.00
2G12	0.99	0.98	1.09	1.03	0.99	1.00	0.99	1.02
PGT121	0.90	0.93	1.03	1.05	0.87	0.94	0.92	1.02
PGT128	0.97	0.94	1.12	1.08	0.94	0.87	0.84	1.02
PGT135	1.01	1.00	1.02	0.96	0.86	1.02	0.98	0.97
14E	0.67	1.13	0.58	0.13	0.51	0.99	1.23	0.04
19b	0.56	3.49	0.67	0.08	0.79	1.80	3.06	0.05
39F	0.35	2.88	0.57	0.09	0.52	1.06	1.74	0.00
HR10	0.63	2.14	0.54	0.19	0.38	1.07	0.92	0.22

HGN194	0.63	1.40	0.58	0.19	0.48	0.73	0.89	0.23
35022	0.80	0.67	0.74	0.60	0.70	0.81	0.81	0.73
3BC176	1.00	1.06	0.93	0.90	0.84	0.95	0.70	0.92
3BC315	1.04	0.96	1.05	0.95	0.60	0.66	0.33	0.42
PGT151	0.62	0.73	0.80	0.70	0.09	0.02	0.01	0.01
7B2	0.56	3.70	0.77	0.33	ND	1.24	2.21	0.00

Supplementary table 1: Complete dataset of binding indices. GLA (GLA) or EDC (EDC) cross-linked material was positively selected with PGT145 (+145), PGT151 (+151) or 3BC315 (+315) or negatively selected with 19b (-19b). Binding indices were calculated compared to unmodified trimers. Data shown are means of all (n=1 for EDC -19b, n=2-6 for all other antigens) independent experiments. Negative values are shown as 0.00. ND: not determined.



Supplementary Fig. 1. Effects on antigenicity of positive and negative selection. BG505 was cross-linked with either GLA or EDC/NHS (EDC) and positively (+) or negatively (-) selected with the indicated antibody. Binding indices were calculated similarly to Fig. 2B and 4C. **(A)** GLA cross-linked trimers were positively selected on a PGT145 column. **(B)** GLA cross-linked trimers were positively selected on a PGT151 column. **(C)** EDC/NHS cross-linked trimers were positively selected on a PGT145 column. **(D)** EDC/NHS cross-linked trimers were positively selected on a 3BC315 column. **(E)** GLA cross-linked trimers were negatively selected on a 19b column. **(F)** EDC/NHS cross-linked trimers were negatively selected on a 19b column.