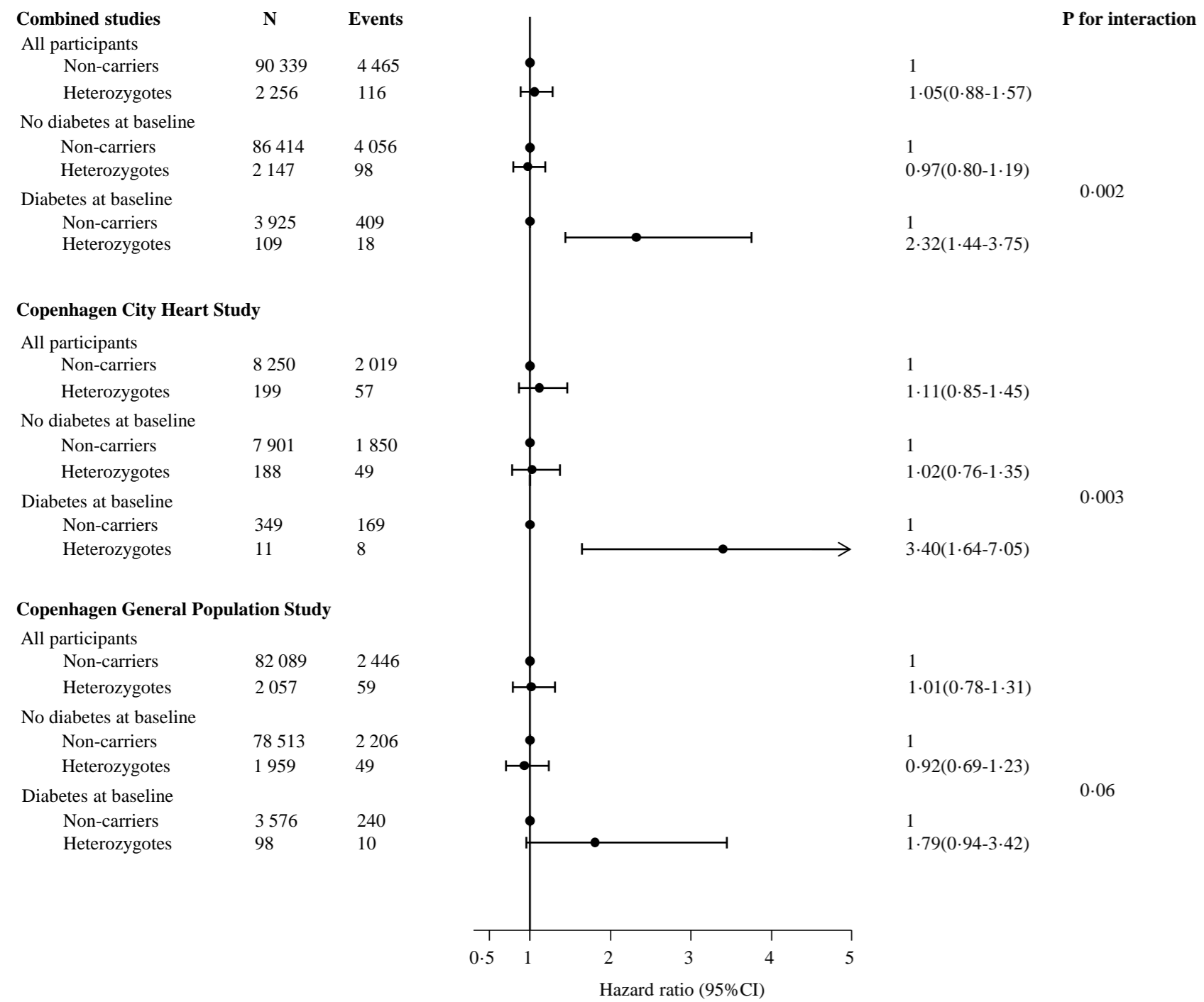
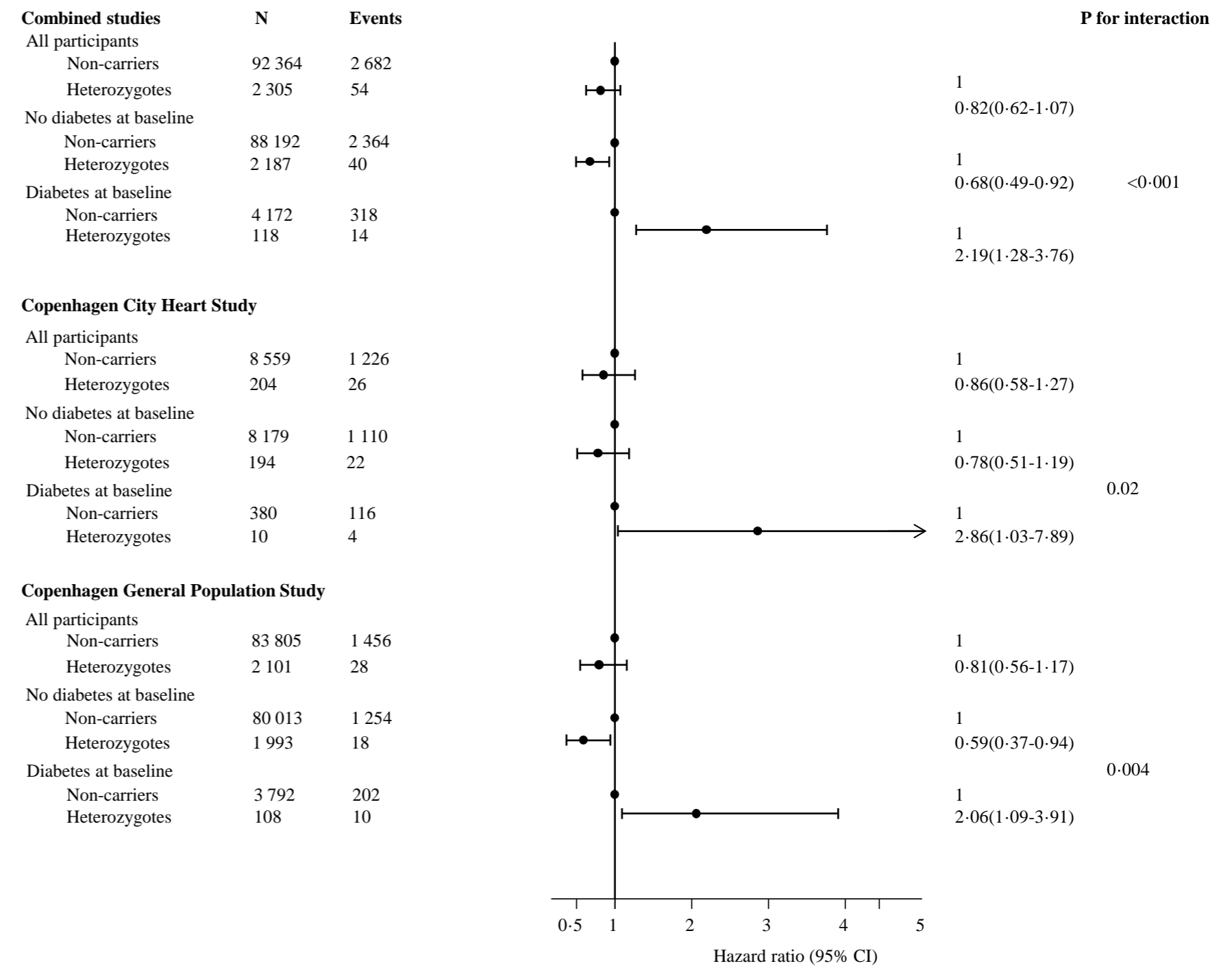


Cardiovascular disease



Heart failure



Supplemental Figure 1. SOD3 R213G genotype and risk of cardiovascular disease and heart failure in the combined studies and in the two studies separately, stratified by diabetes status. 3 262 individuals had experienced a cardiovascular event and 1188 individuals had experienced heart failure prior to examination and were not included in the analyses. Baseline diabetes: self-reported diabetes, hospital diagnosis of diabetes prior to examination, non-fasting plasma glucose >11mmol/L at examination, and/or use of antidiabetic medication. All estimates were adjusted for age; the combined studies were also adjusted for study. Cardiovascular disease was the composite endpoint of cardiovascular death, myocardial infarction, and ischemic stroke. CI: confidence interval.