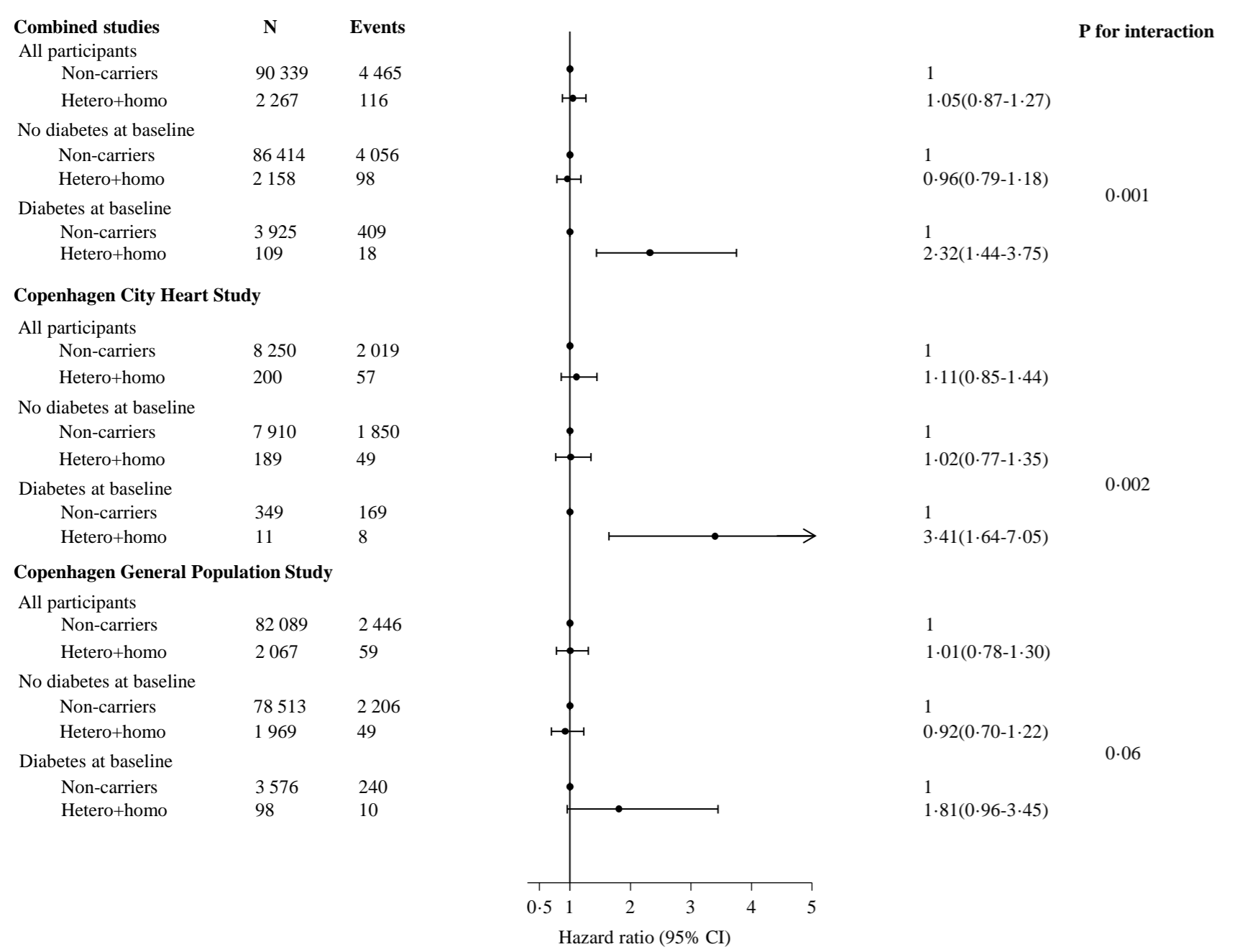
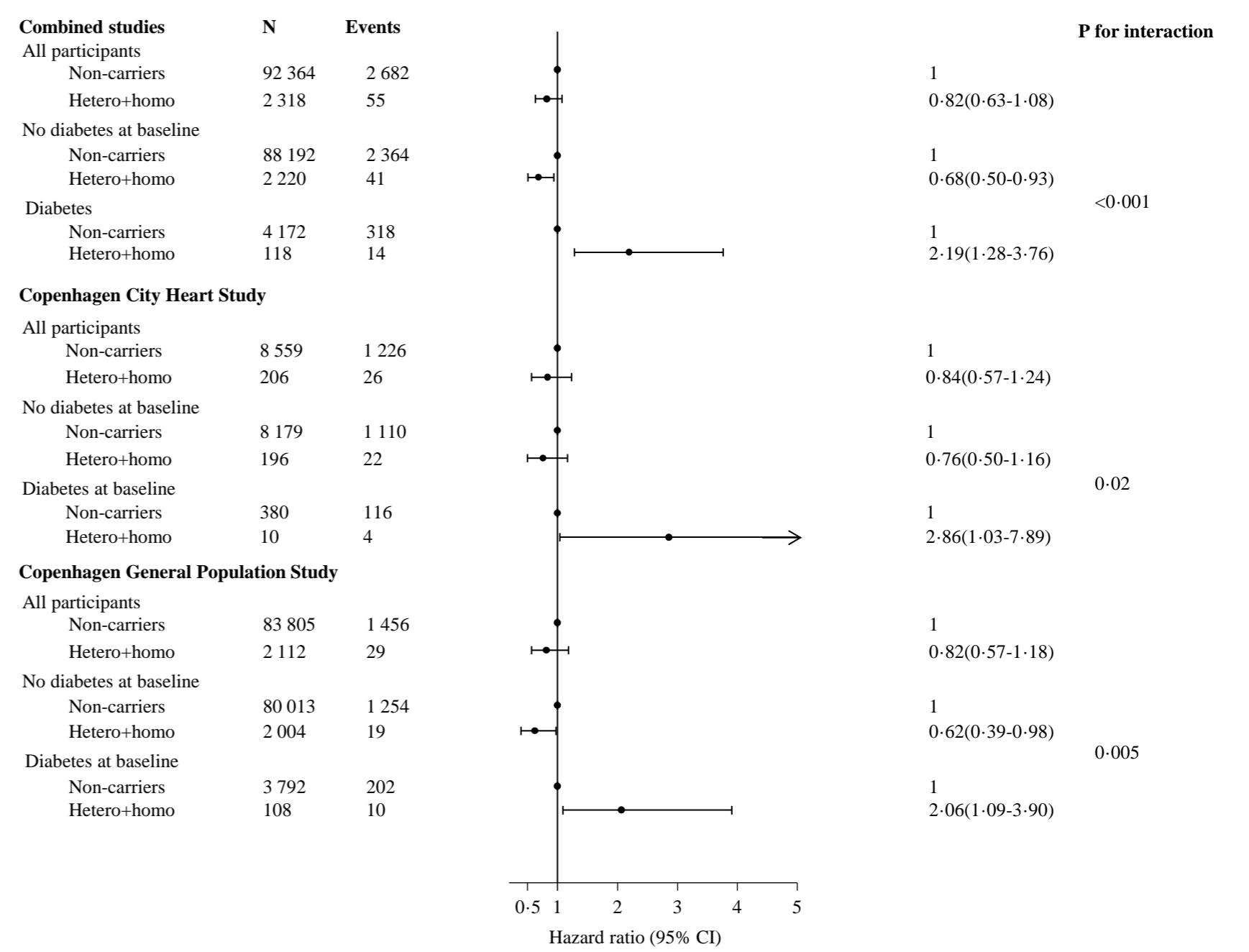


Cardiovascular disease



Heart failure



Supplemental Figure 2. SOD3 R213G genotype and risk of cardiovascular disease and heart failure, stratified by baseline diabetes status. Hetero+homo were R213G heterozygotes and homozygotes combined. Baseline diabetes: self-reported diabetes, hospital diagnosis of diabetes prior to examination, non-fasting plasma glucose >11mmol/L at examination, and/or use of antidiabetic medication. All estimates were adjusted for age; the combined studies were also adjusted for study. Cardiovascular disease was the composite endpoint of cardiovascular death, myocardial infarction, and ischemic stroke. CI: confidence interval.