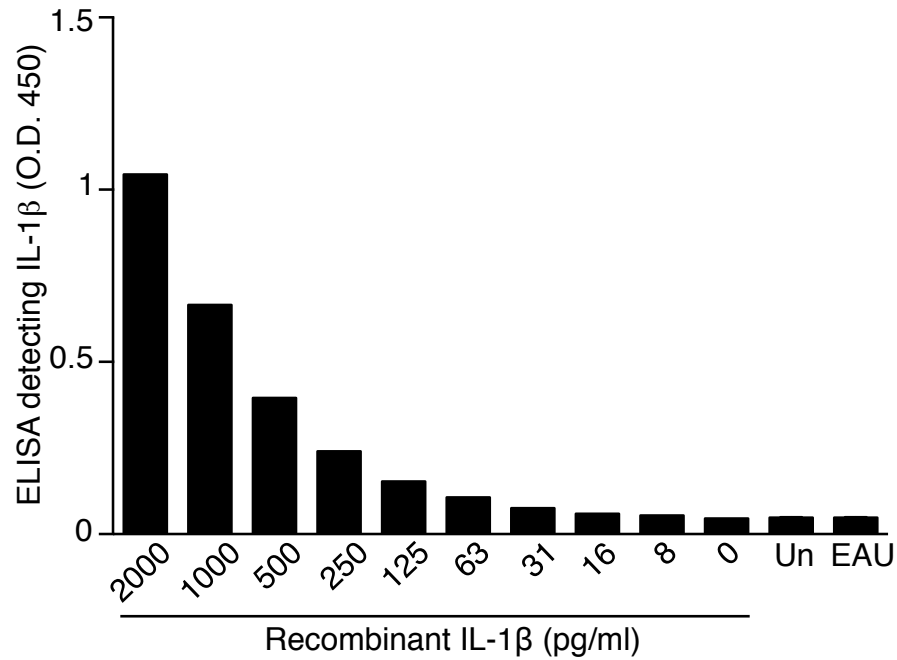


Supplemental Figure 1. Cervical and draining lymph nodes cells from WT mice without immunization or with EAU were isolated on day 21 post-immunization. Expression of intracellular pro-IL-1 β in different immune cell types was examined by flow cytometric analysis. Data shown are from 2 un-immunized and 3 EAU mice.



Supplemental Figure 2. IL-1 β is not detected in the serum during EAU. Serum (dilution = 1:20) from WT mice without immunization (Un) and with EAU were obtained on day 21 post-immunization. Serum IL-1 β levels were measured by ELISA. Serial dilutions of recombinant IL-1 β (from 2000 to 8 pg/ml) were used as controls. In the un-immunized group, shown are combined results from 5 mice; in the EAU group, shown are combined results of 2 independent experiments, with serum in each experiment combined from 3 mice.