

Supplementary Material

Figure A. LC-MS Analysis of samples used in this study

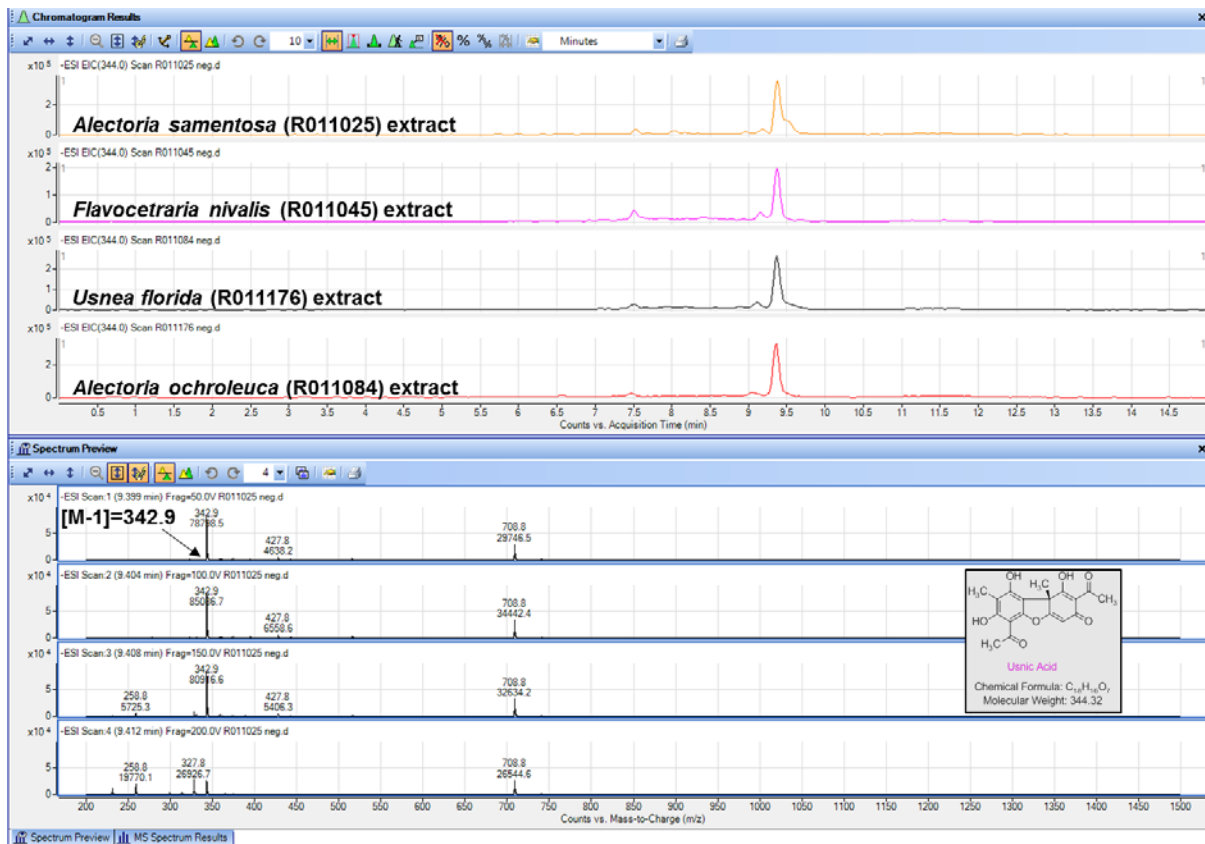
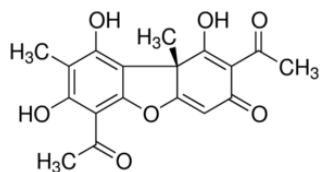


Figure B. Optical activity Analysis of samples used in this study.



Reference data for optical activity of (+)-Usnic acid
 $[\alpha]_{25/D} = +488^\circ$, $c = 0.7\%$ in chloroform

Collection No.	Samples	Optical activity	
		Experimental Results	Reported usnic acid status in lichen species
-	(+)-Usnic acid (Sigma-Aldrich)	$[\alpha]_{24.6} = +467^\circ$ (c 1.7, CHCl ₃)	+
R011025	<i>Alectoria samentosa</i> extract	$[\alpha]_{25.0} = -345^\circ$ (c 0.65, CHCl ₃)	-
R011045	<i>Flavocetraria nivalis</i> extract	$[\alpha]_{24.9} = -232^\circ$ (c 1.42, CHCl ₃)	±
R011176	<i>Usnea florida</i> extract	$[\alpha]_{24.9} = +107^\circ$ (c 1.25, CHCl ₃)	+
R011084	<i>Alectoria ochroleuca</i> extract	$[\alpha]_{24.9} = -438^\circ$ (c 1.25, CHCl ₃)	-