

Supplementary Online Content

Lautner M, Lin H, Shen Y, et al. Disparities in the use of breast-conserving therapy among patients with early-stage breast cancer. *JAMA Surg*. Published online June 17, 2015. doi:10.1001/jamasurg.2015.1102.

eTable 1. Association Between Facility Location and Travel Distance to Treatment Facility

eTable 2. Association Between Nodal Stage and Socioeconomic Demographics

eFigure. Adjusted and Unadjusted Data Showing BCT Utilization Over Time

This supplementary material has been provided by the authors to give readers additional information about their work.

eTable 1. Association Between Facility Location and Travel Distance to Treatment Facility. Data represents number of patients within each geographic location and their travel distance for treatment.

		Facility Location			
		Northeast	South	Midwest	West
Distance from treatment facility (km)	<=6.3	48,565(30.7%)	48,486(21.3%)	49,604(26.4%)	36,366(28.8%)
	6.4-13.2	42,629(26.9%)	55,616(24.5%)	44,901(23.9%)	33,213(26.3%)
	13.3-27.8	39,660(25%)	56,932(25.1%)	43,682(23.2%)	29,230(23.1%)
	>27.8	27,583(17.4%)	66,136(29.1%)	49,953(26.6%)	27,578(21.8%)

eTable 2. Association Between Nodal Stage and Socioeconomic Demographics

	N0	N1	N2	N3	NX	p-Value
Insurance Status						
Medicaid	24989(71.1%)	5943(16.9%)	1278(3.6%)	481(1.4%)	2441(6.9%)	<0.01
Medicare >65years	201603(82.9%)	18855(7.8%)	3374(1.4%)	1116(0.5%)	18188(7.5%)	
Medicare <65years	18483(78%)	2768(11.7%)	532(2.2%)	190(0.8%)	1726(7.3%)	
Not Insured	10006(71%)	2384(16.9%)	461(3.3%)	168(1.2%)	1078(7.6%)	
Other government	4209(77.2%)	661(12.1%)	131(2.4%)	47(0.9%)	405(7.4%)	
Private	308101(78.7%)	44428(11.4%)	6925(1.8%)	2398(0.6%)	29544(7.5%)	
Median Income, \$						<0.01
<30 000	62449(76.3%)	10080(12.3%)	1992(2.4%)	680(0.8%)	6697(8.2%)	
30,000-34,999	89397(78.5%)	12324(10.8%)	2280(2%)	817(0.7%)	9026(7.9%)	
35,000-45,999	151813(79.6%)	19784(10.4%)	3430(1.8%)	1199(0.6%)	14583(7.6%)	
>46,000	246303(80.6%)	30803(10.1%)	4723(1.5%)	1591(0.5%)	22046(7.2%)	
Population without high school diploma, %						<0.01
<14.0	226670(81.3%)	26896(9.6%)	4108(1.5%)	1383(0.5%)	19877(7.1%)	
14.0-19.9	131723(79.9%)	16649(10.1%)	2865(1.7%)	982(0.6%)	12541(7.6%)	
20.0-28.9	115277(78.3%)	16318(11.1%)	2969(2%)	1022(0.7%)	11680(7.9%)	
>29.0	76241(75.5%)	13125(13%)	2481(2.5%)	899(0.9%)	8252(8.2%)	
Distance from treatment facility, km						<0.01
<=6.3	135093(79.7%)	17853(10.5%)	3075(1.8%)	1033(0.6%)	12450(7.3%)	
6.4-13.2	144966(79.2%)	18763(10.3%)	3271(1.8%)	1081(0.6%)	14940(8.2%)	
13.3-27.8	140182(79.5%)	18628(10.6%)	3105(1.8%)	1051(0.6%)	13393(7.6%)	
>27.8	136115(79.5%)	18646(10.9%)	3135(1.8%)	1179(0.7%)	12175(7.1%)	

**eFigure. Adjusted and Unadjusted Data Showing BCT Utilization Over Time
Function of (A) facility type**

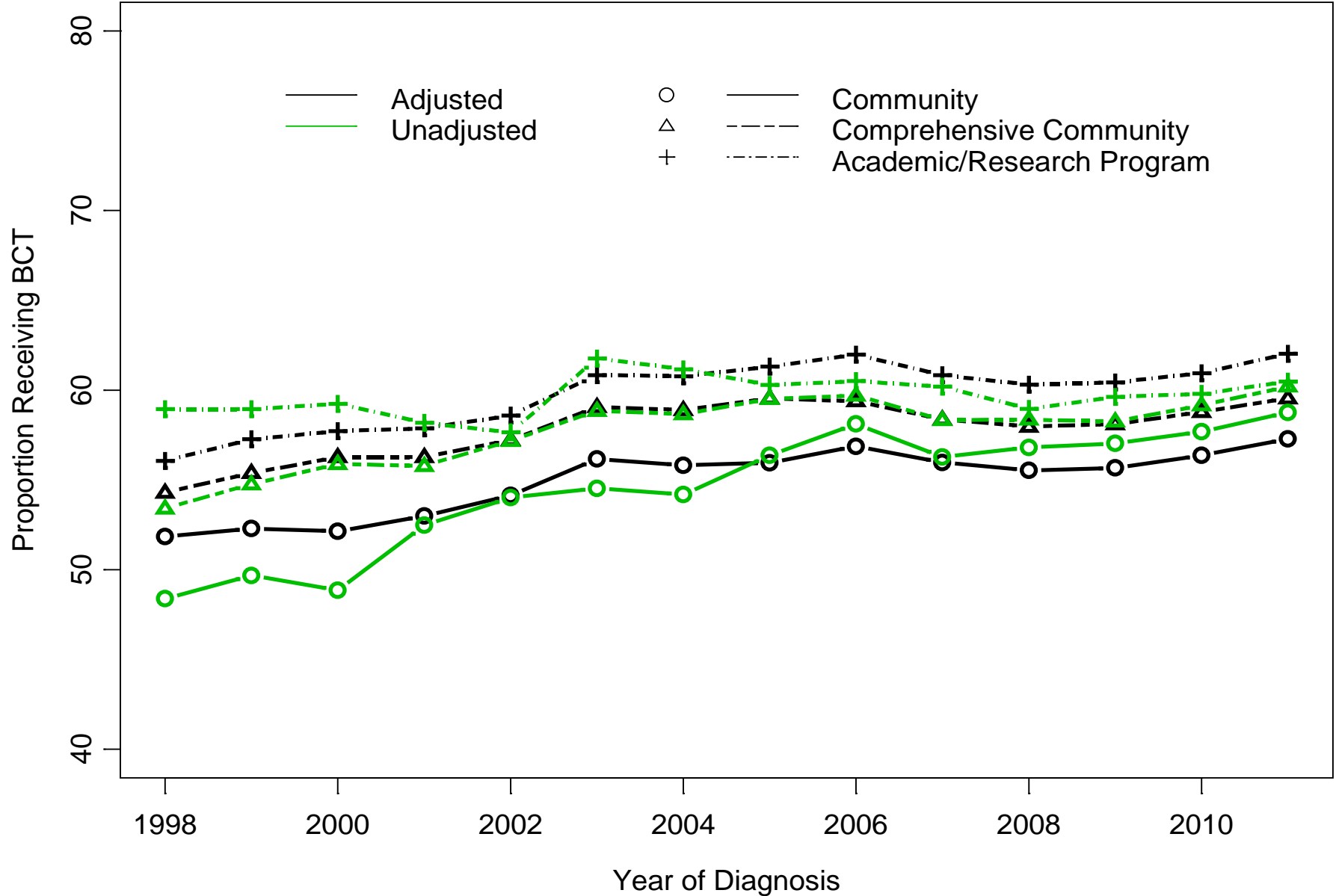


Figure 2A

**eFigure. Adjusted and Unadjusted Data Showing BCT Utilization Over Time
Function of (B) facility location**

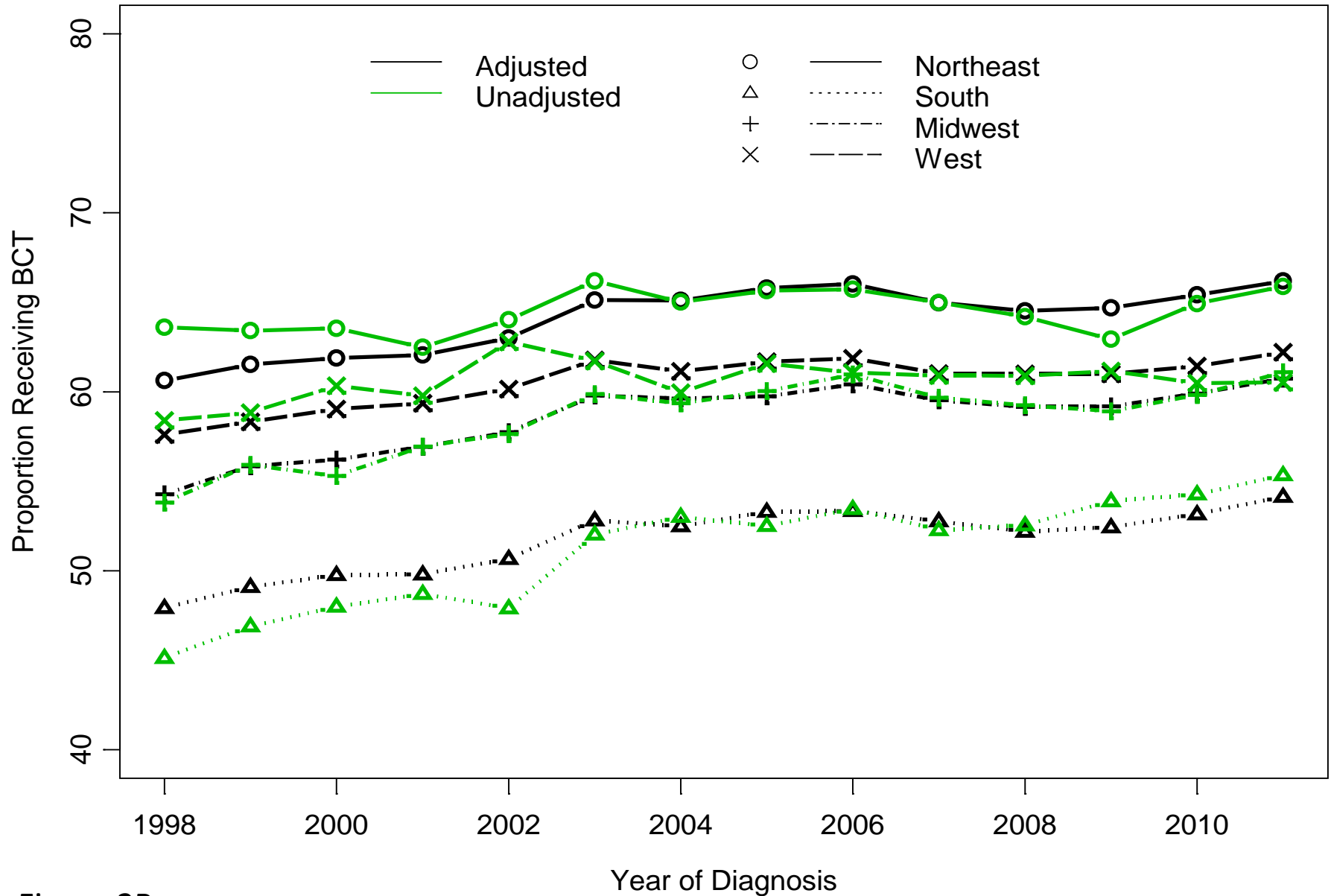


Figure 2B

eFigure. Adjusted and Unadjusted Data Showing BCT Utilization Over Time
Function of (C) age

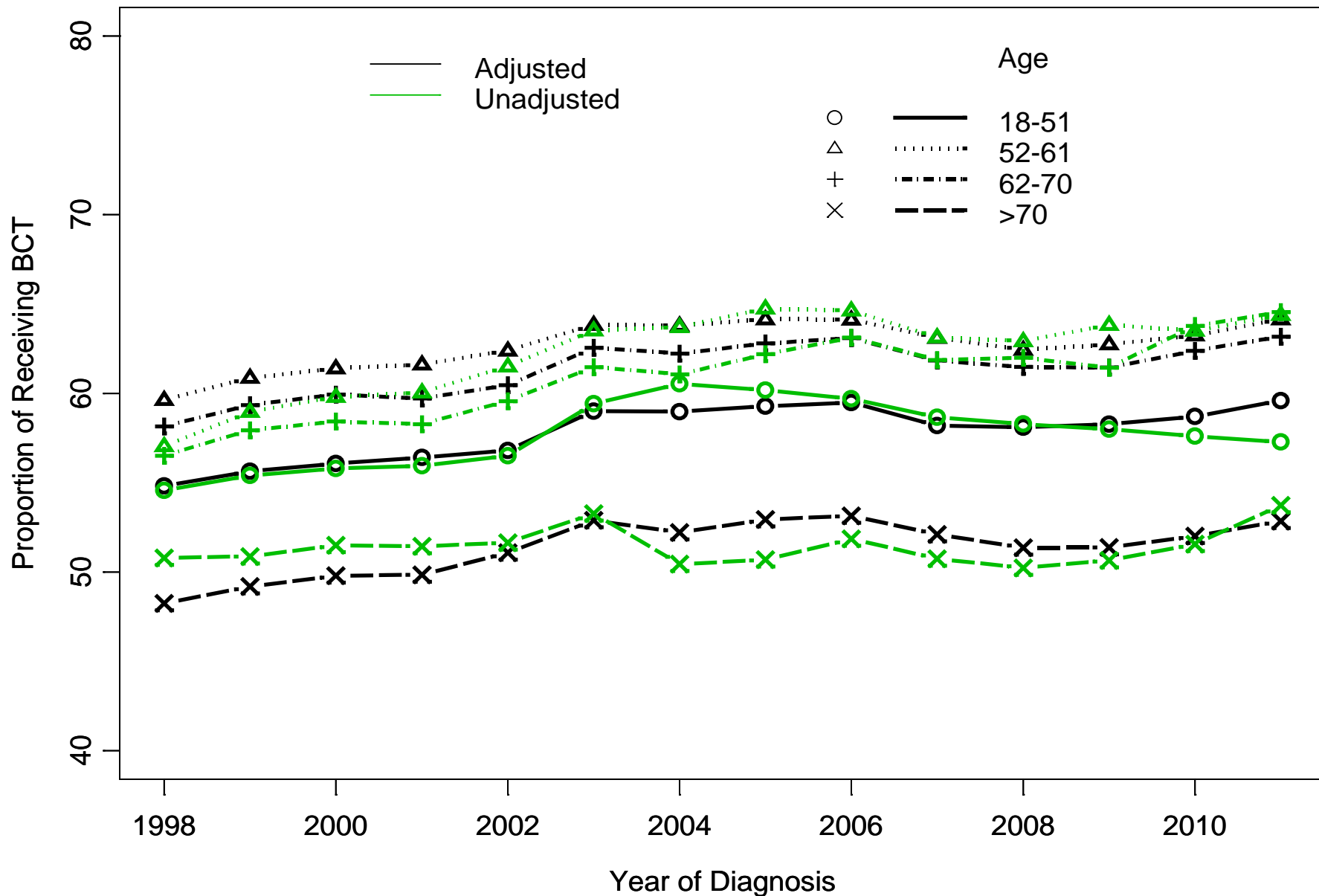


Figure 2C

**eFigure. Adjusted and Unadjusted Data Showing BCT Utilization Over Time
Function of (D) insurance status**

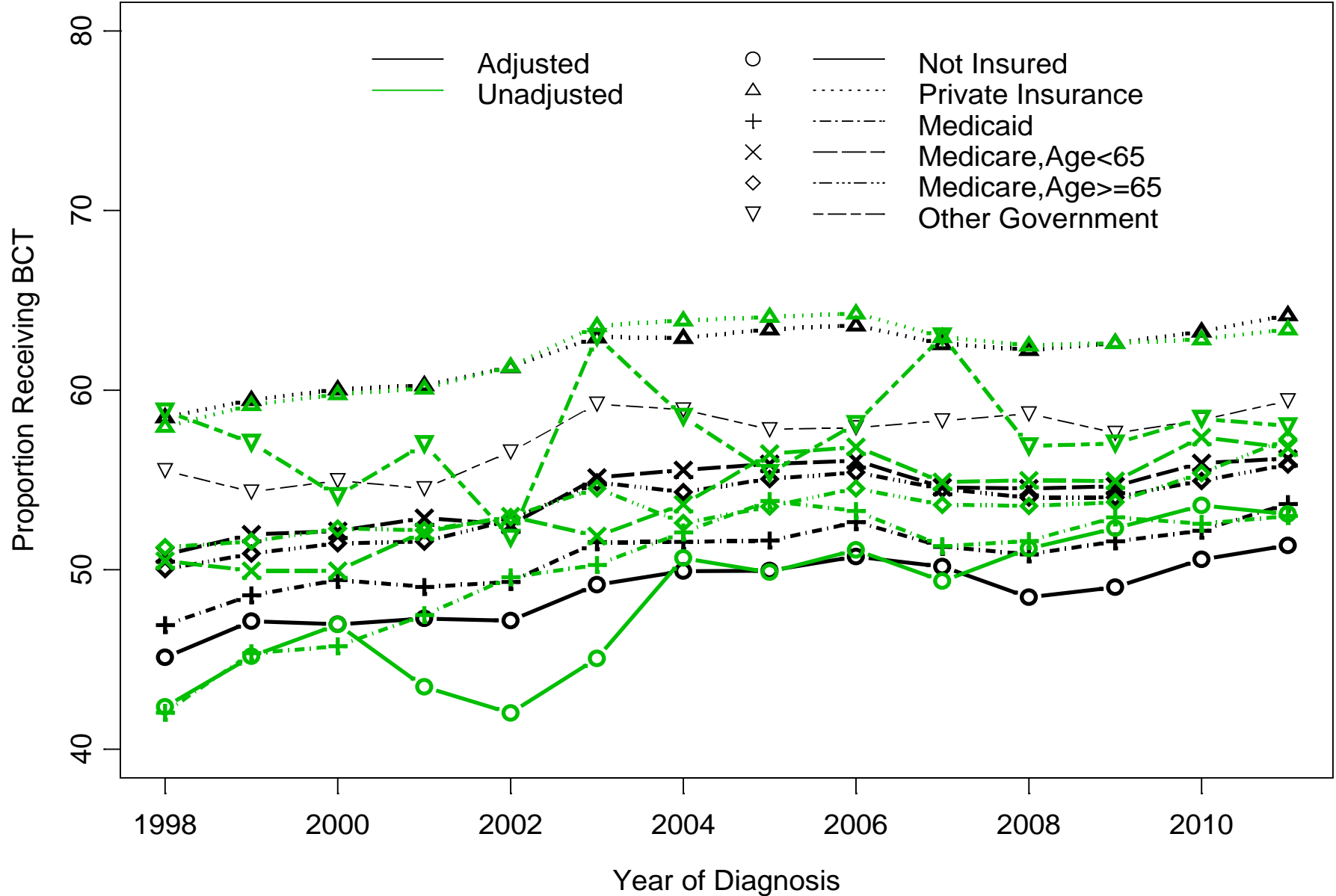
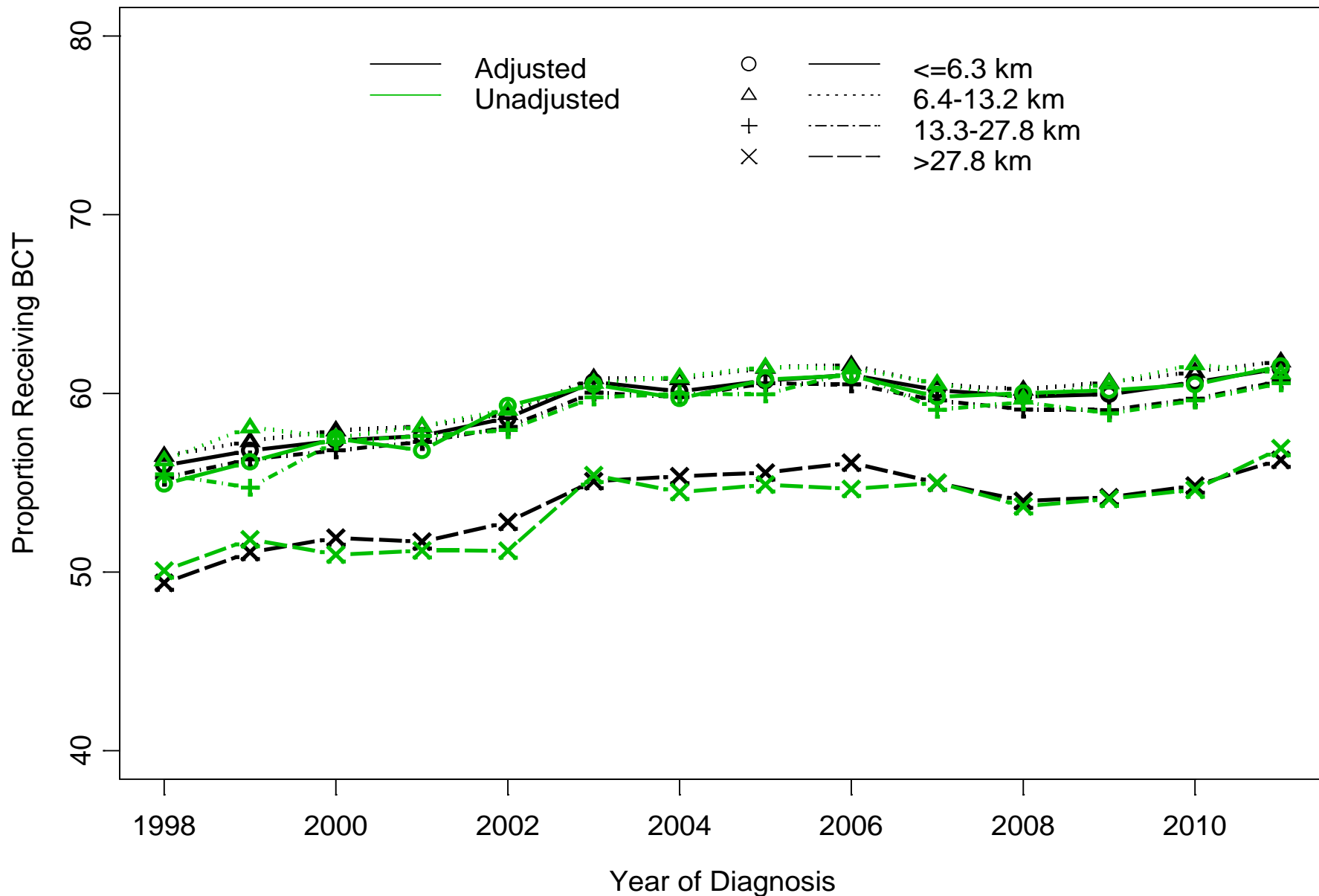


Figure 2D

**eFigure. Adjusted and Unadjusted Data Showing BCT Utilization Over Time
Function of (E) residence distance from treatment facility**



eFigure. Adjusted and Unadjusted Data Showing BCT Utilization Over Time
 Function of (F) annual median income

