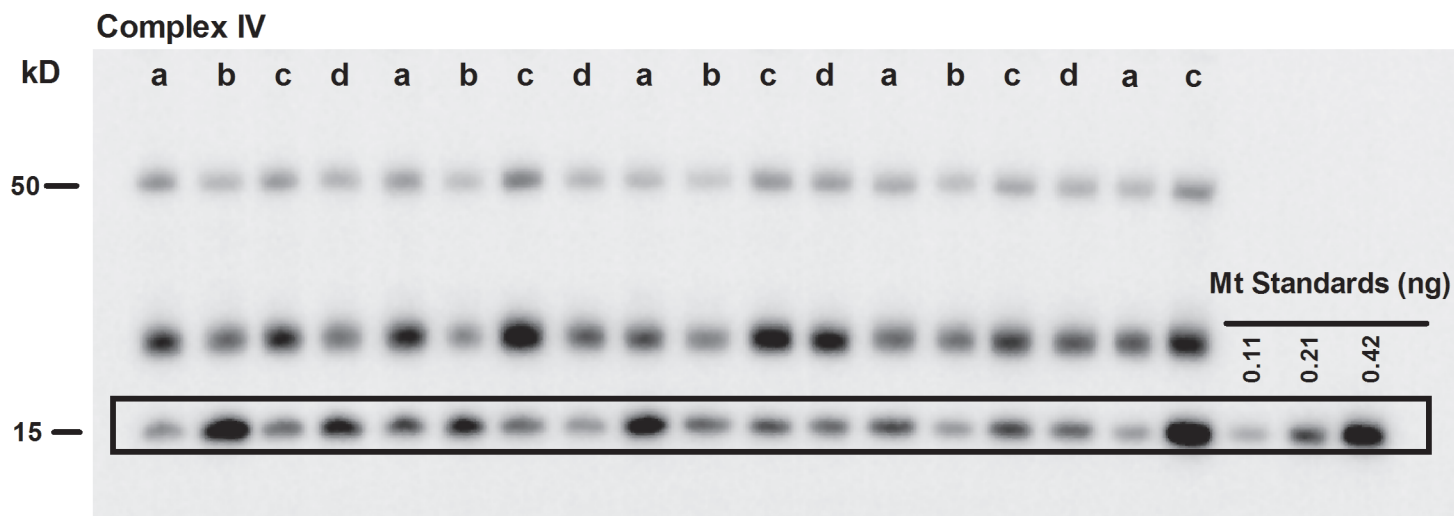


**A**



**B**

**Supplementary Figure S4. Representative immunoblots analysis of adipose tissue for complex II and complex IV subunits.** Adipose proteins were separated by SDS-PAGE and analyzed for content of complex II (A) and complex IV (B) subunits by western blot. 5  $\mu$ g of adipose protein was used per lane. Due to the presence of significant levels of proteins of the incorrect size, protein from purified rat liver mitochondria was run as standards in increasing amounts. These mitochondrial standards also served to normalize variability between blots for quantitation purposes. Only signal within the boxed area was quantified. a - Low Fat; b - High Fat; c - HF+Exercise; d - HF+Ex+ vitamin C and vitamin E supplementation.