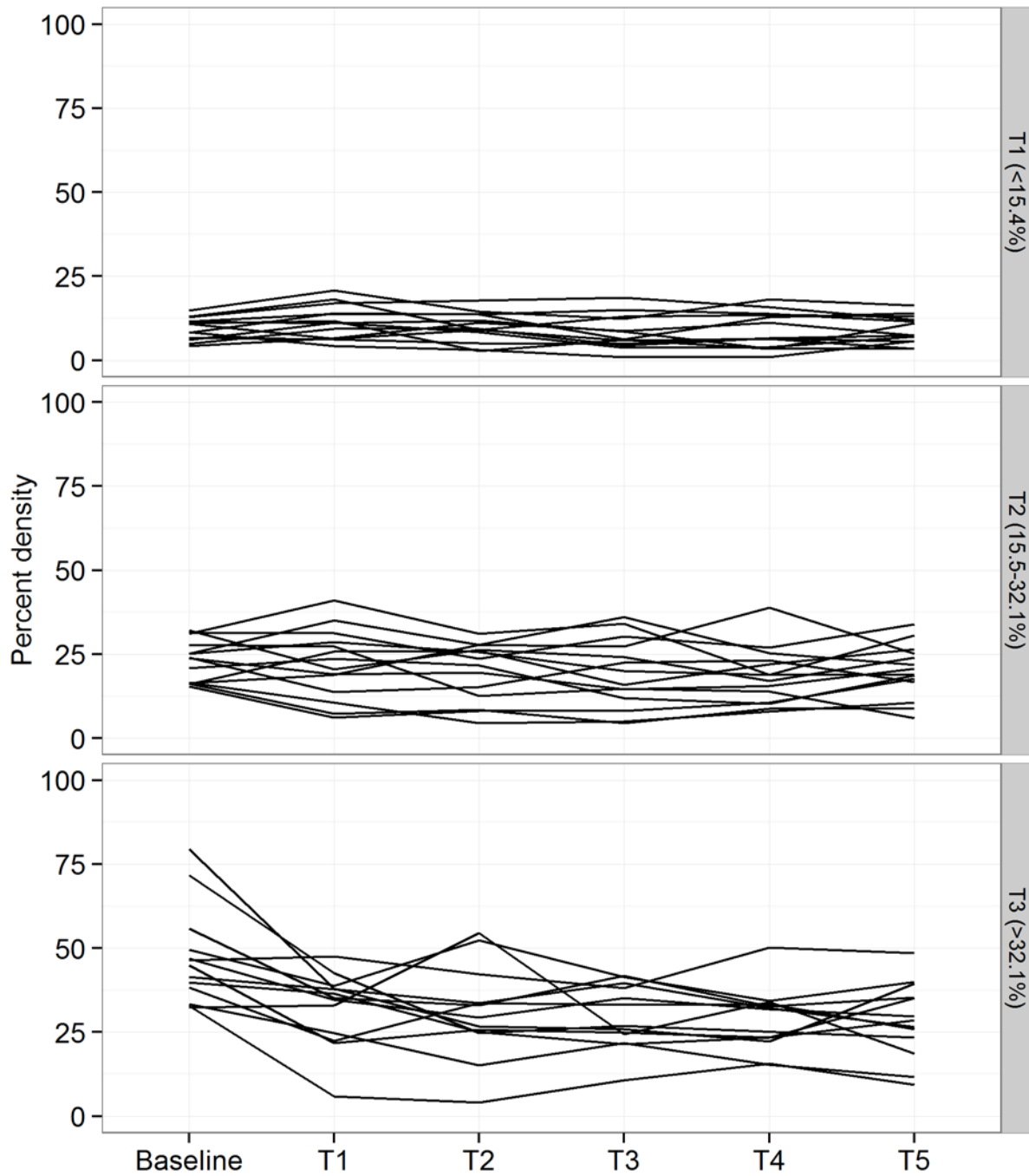
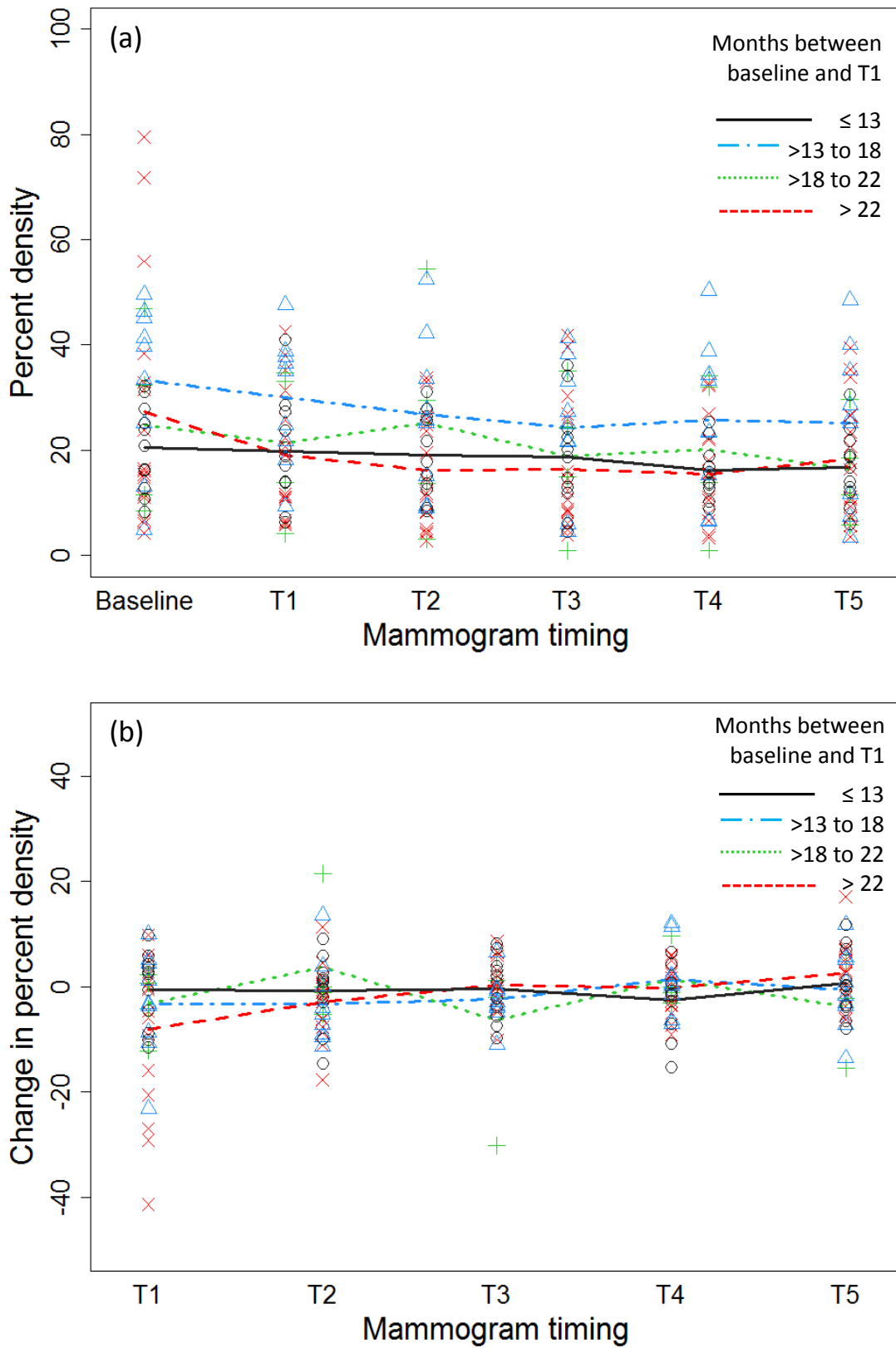


Supplementary Figure S1.



Supplementary Figure S1. Percent density from baseline to T5 is shown for each individual patient (N=40). The data are stratified by tertiles of percent density at baseline (category labels shown on right vertical axis).

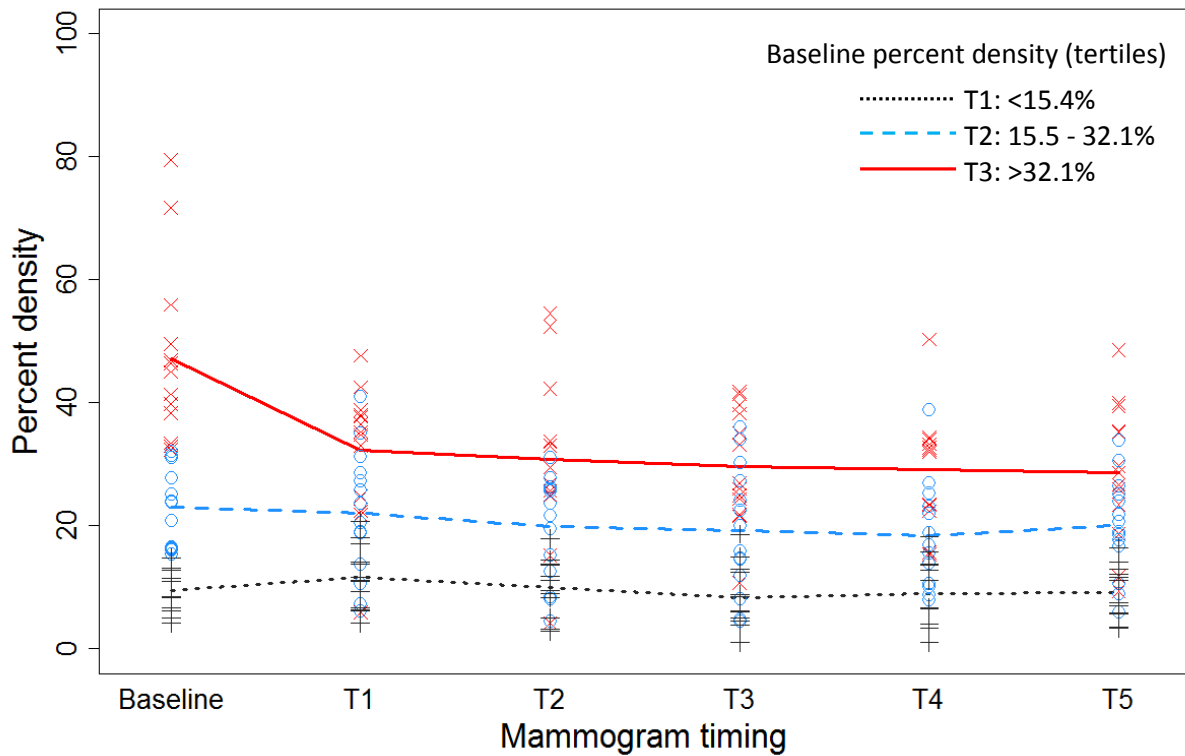
Supplementary Figure S2.



Supplementary Figure S2. Percent density from baseline to T5 (panel a) and change in density compared to the previous mammogram at T1 to T5 (panel b) are shown stratified by the duration between the baseline and T1 mammograms (≤ 13 months, N=11; >13 to 18 months, N=9; >18 to 22 months, N=4; >22

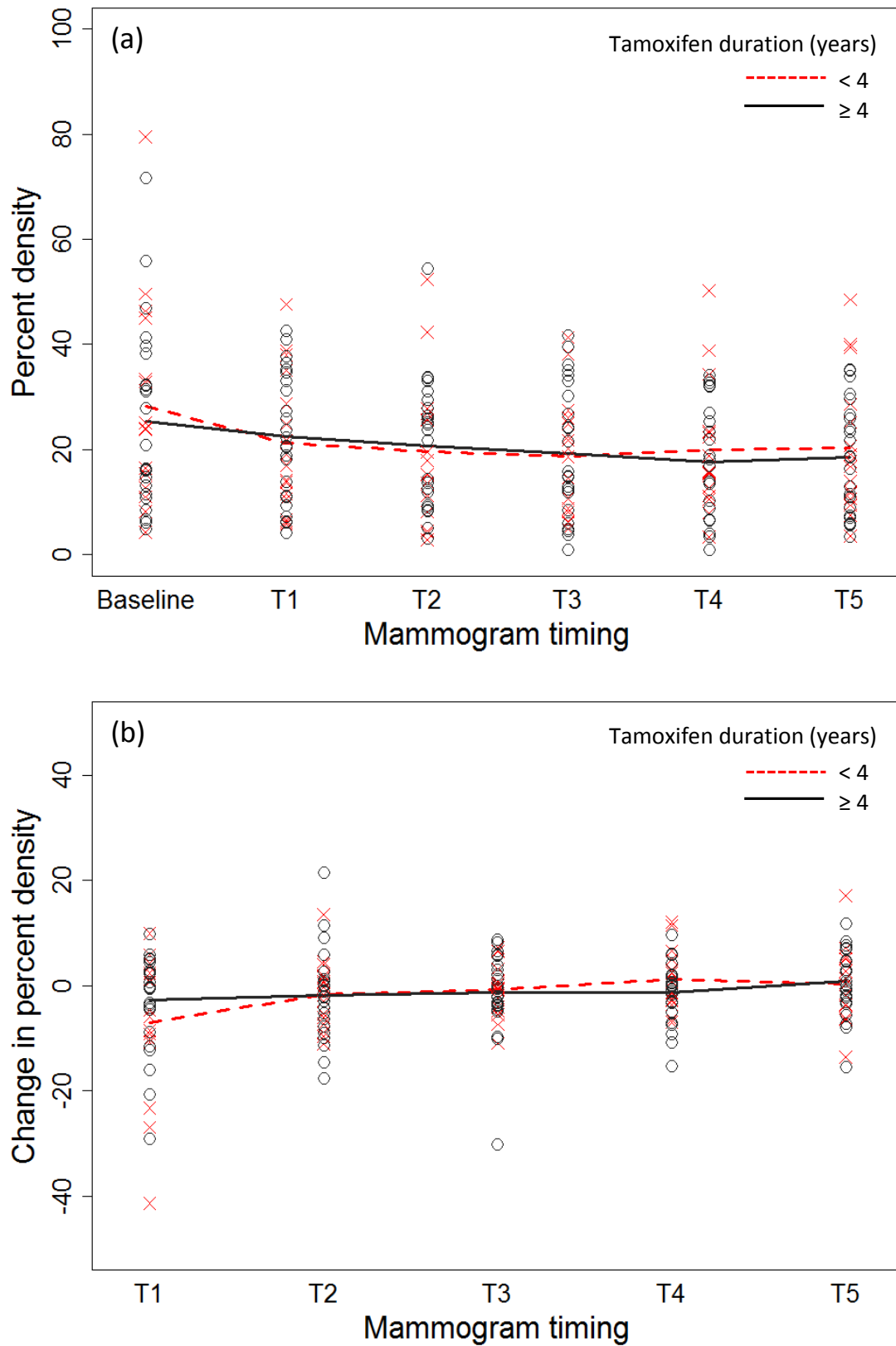
months, N=16). Lines represent smoothed mean values at each time point. The mean (SD) cumulative reduction in density by T5 was lowest among women with ≤ 13 months between baseline and T1 (-3.7% [SD 7.8], solid line). Reductions were similar for women with >13 to 18 (-8.1% [SD 8.7], dotted and dashed line), >18 to 22 (-8.4% [SD 8.4], dotted line), or >22 (-8.8% [SD 16.4], dashed line) months between baseline and T1. Change in percent density over time was not statistically different among the groups (P-interaction=0.74).

Supplementary Figure S3.



Supplementary Figure S3. Percent density from baseline to T5 is shown stratified by tertiles of baseline percent density (<15.4%, N=13; 15.5 to 32.1%, N=14; >32.1%, N=13). Lines represent smoothed mean values at each time point and 'x', 'o', and '+' markers represent values for individual patients. The mean cumulative change from baseline to T5 was -0.4% (SD 4.2) for patients in tertile 1 (dotted line, '+'), -3.0% (SD 7.6) for patients in tertile 2, (dashed line, 'o') and -18.5% (SD 13.4) for patients in tertile 3 (solid line, 'x').

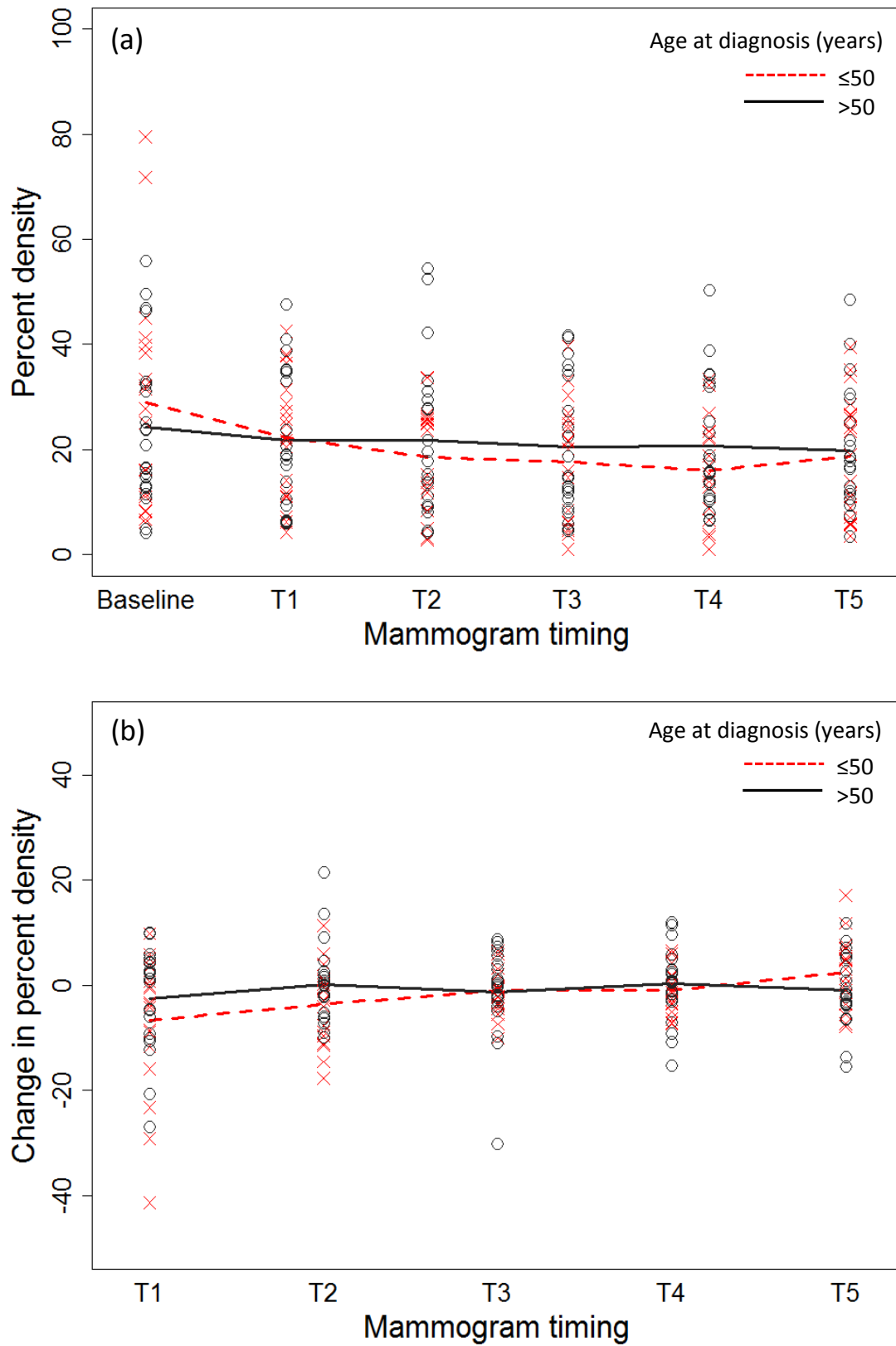
Supplementary Figure S4.



Supplementary Figure S4. Percent density from baseline to T5 (panel a) and change in density compared to the previous mammogram at T1 to T5 (panel b) are shown stratified by duration of tamoxifen use (< 4 years, N=16; ≥ 4 years, N=24). Lines represent smoothed mean values at each time point and 'x' and 'o'

markers represent values for individual patients. The mean cumulative change in density from baseline to T5 was -8.0% (SD 12.1) for patients who used tamoxifen for < 4 years (dashed line, 'x') and -6.7% (SD 12.2) for patients who used tamoxifen for ≥ 4 years (solid line, 'o'). Change in percent density over time did not differ between the two groups (P-interaction=0.42).

Supplementary Figure S5.



Supplementary Figure S5. Percent density from baseline to T5 (panel a) and change in density compared to the previous mammogram at T1 to T5 (panel b) are shown stratified by age at breast cancer diagnosis (≤ 50 years, N=19; >50 years, N=21). Lines represent smoothed mean values at each time point and 'x'

and 'o' markers represent values for individual patients. The mean cumulative change in density from baseline to T5 was -10.2% (SD 14.8) for patients \leq 50 years old (dashed line, 'x') and -4.5% (SD 8.3) for patients $>$ 50 years old (solid line, 'o'). Change in percent density over time was not statistically different between the two groups (P-interaction=0.36).