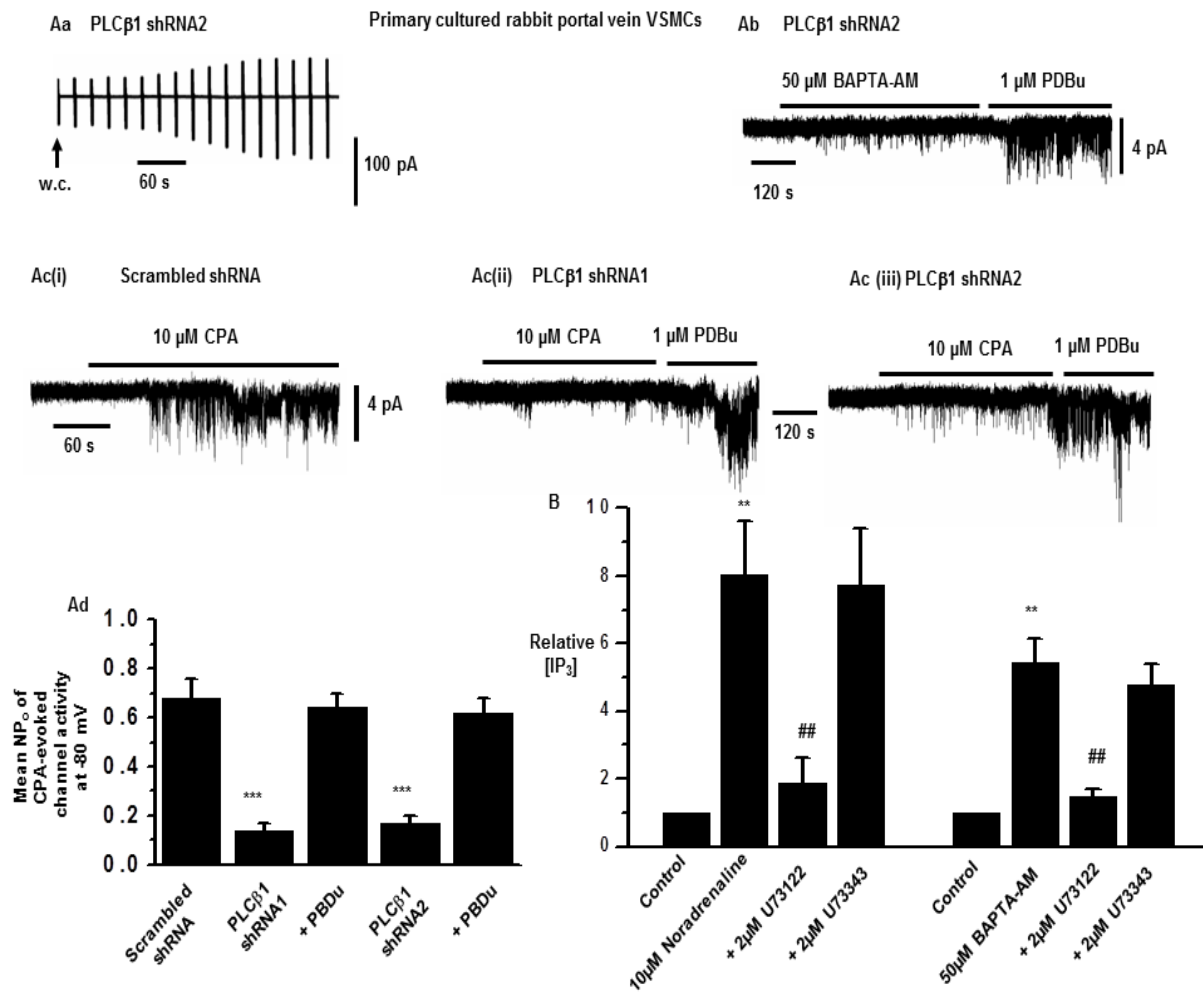


Supplementary Figure 3



**Figure S3.** (Aa) and (Ab) Representative traces showing that transduction of VSMCs with PLCβ1 shRNA2 produced greatly reduced store-operated whole-cell currents and TRPC1 channel activity (see Fig. 3 for mean data). (Ac) and (Ad) Representative recordings and mean data showing that CPA-evoked TRPC1 SOC activities were reduced by PLCβ1 shRNA1 and shRNA2 compared to scrambled shRNA but this did not affect channel activation by PDBu ( $n=7$ ,  $***P<0.001$ ). (B) Pre-treatment with noradrenaline induced an approximate 8-fold increase in relative IP<sub>3</sub> level measured using an ELISA kit, which was prevented by co-application of U73122 but not by U73343. BAPTA-AM induced over a 4-fold increase in relative IP<sub>3</sub> level which was also prevented by U73122 but not by U73343. ( $n=3$  cultured cell preparations,  $**P<0.01$  (vs. control),  $##P<0.01$  (NA- or BAPTA-AM-evoked increase in IP<sub>3</sub> levels vs. U73122)).