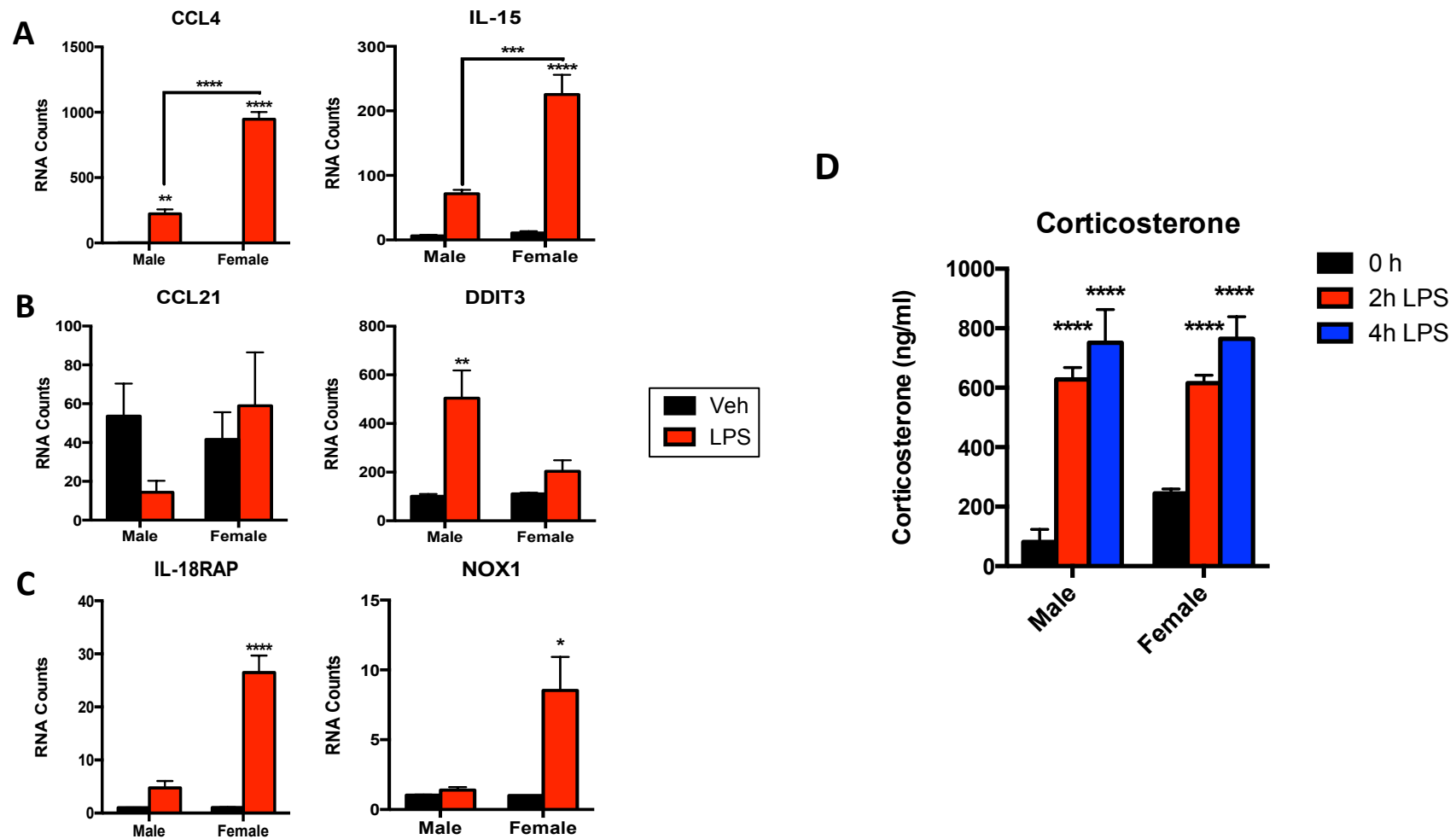


Supplemental Figure 2



Supplemental Figure 2: WT C57bl/6J mice have sex-sensitive genes regulated by LPS. Liver RNA counts of male and female mice treated with vehicle or LPS for 4 hours showing LPS regulated female-sensitive genes (**A**), LPS regulated male-sensitive genes (**B**) and LPS regulated non sex-biased genes (**C**). $n=3$ biological replicates. * denotes $p<0.05$, ** $p<0.01$, *** $p<0.001$, **** $p<0.0001$. (**D**) Circulating corticosterone levels from male and female mice treated with LPS (5mg/kg) detected by ELISA. Data are expressed as corticosterone (ng/ml) \pm SEM; $n=3-4$, **** denotes $p<0.0001$.