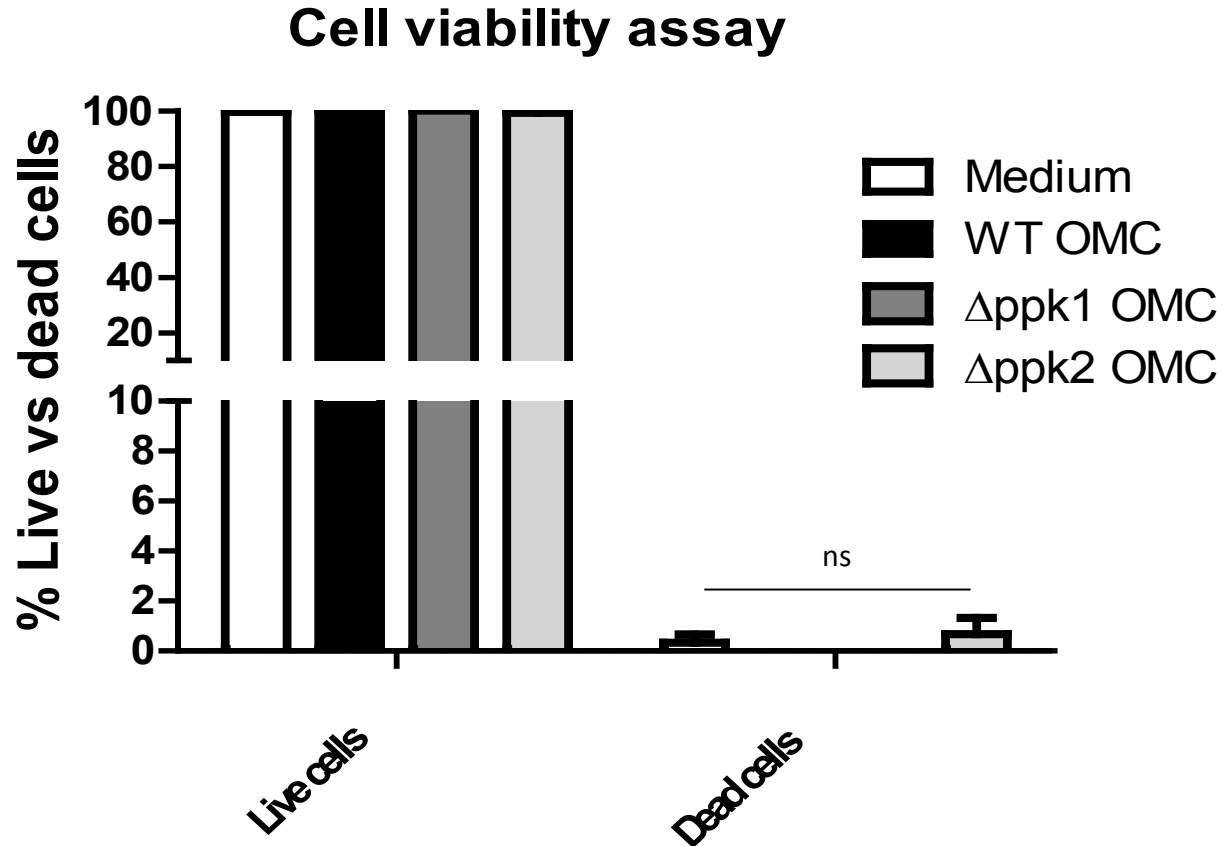


Supplemental Figure 2



Supplemental Figure S2 Determining the effect of the total OMC from WT, $\Delta ppk1$ and $\Delta ppk2$ on INT-407 cell viability. INT-407 cell monolayers were incubated with the OMC from *C. jejuni* wild type and mutants (150 $\mu\text{g}/\text{mL}$) for 1 h in triplicate wells, and the viability of the cells was determined using trypan blue staining. Results are presented as the mean \pm SEM of the number of live and dead cells, where 'ns' indicates not significant (one way ANOVA).