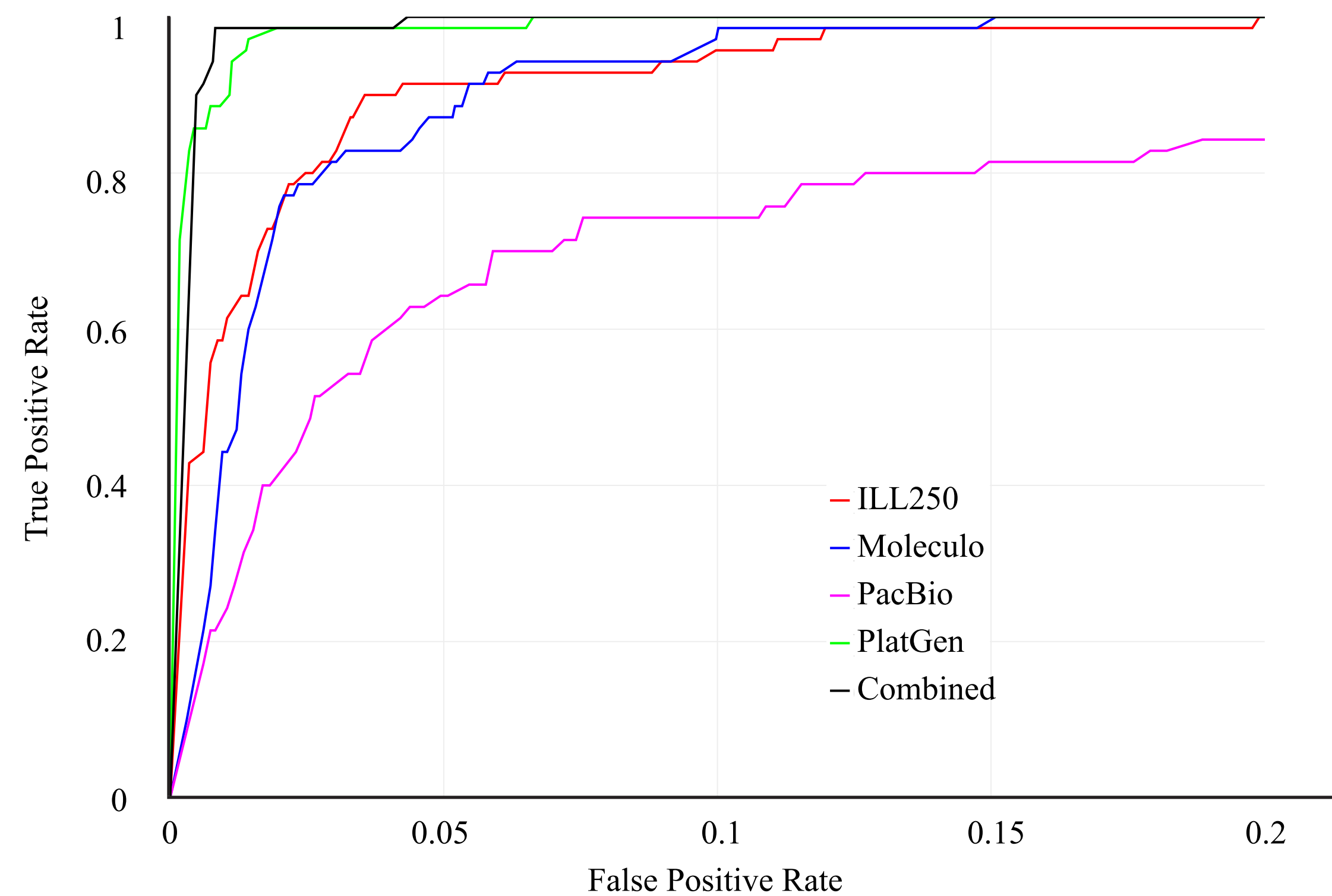
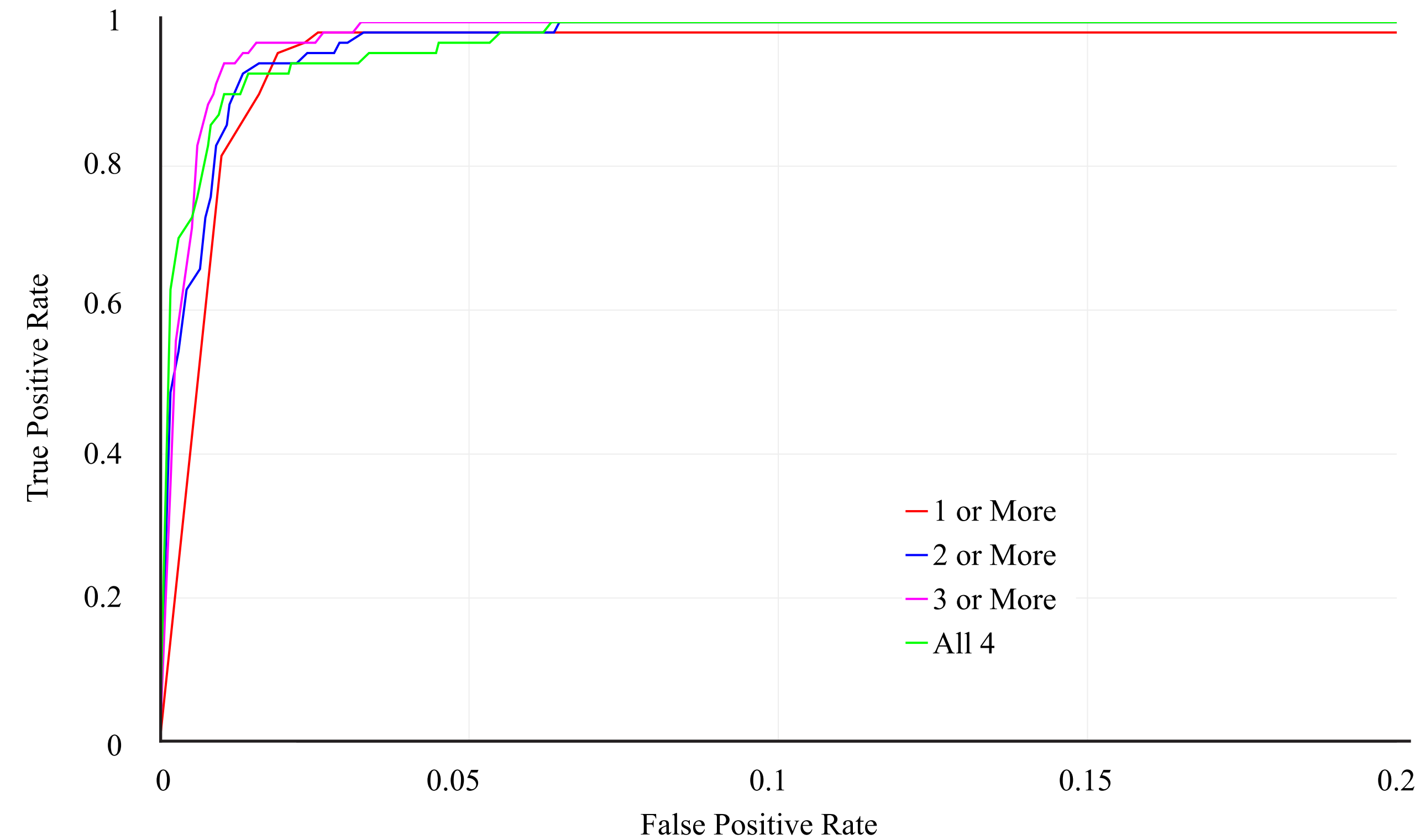


(A)**(B)**

Supplementary figure 4: ROC curves for One-class classification using SVM, treating the 4000 random regions as negatives and the Spiral Genetics insertions calls as positives. (A) ROC curves for one-class models for each dataset separately and for all combined. (B) ROC curves for one-class model requiring 1 or more, 2 or more, 3 or more, or all 4 technologies to have high classification scores. See original data at <https://plot.ly/~desuchen0929/391>, and <https://plot.ly/297/~parikhhm/>.