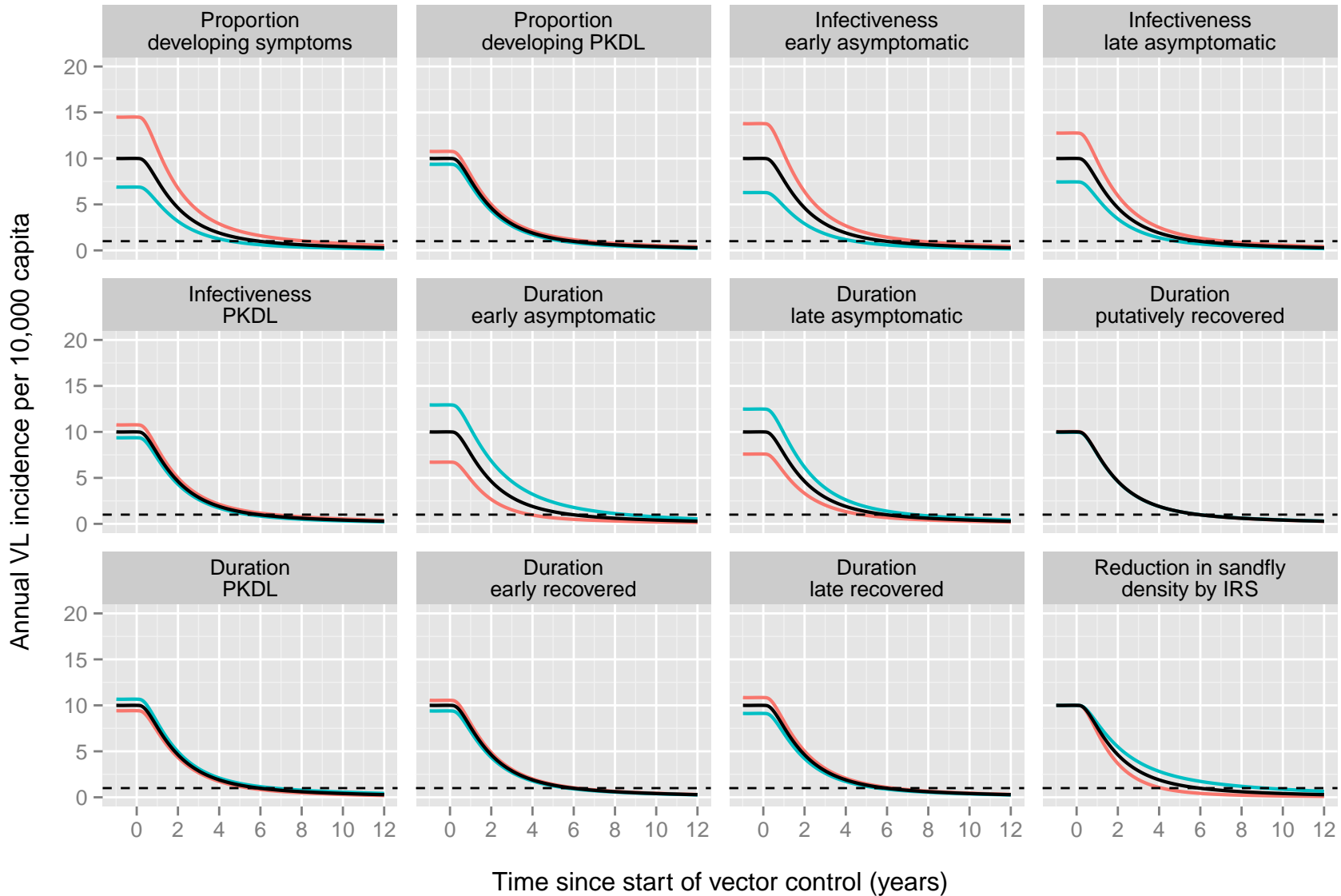


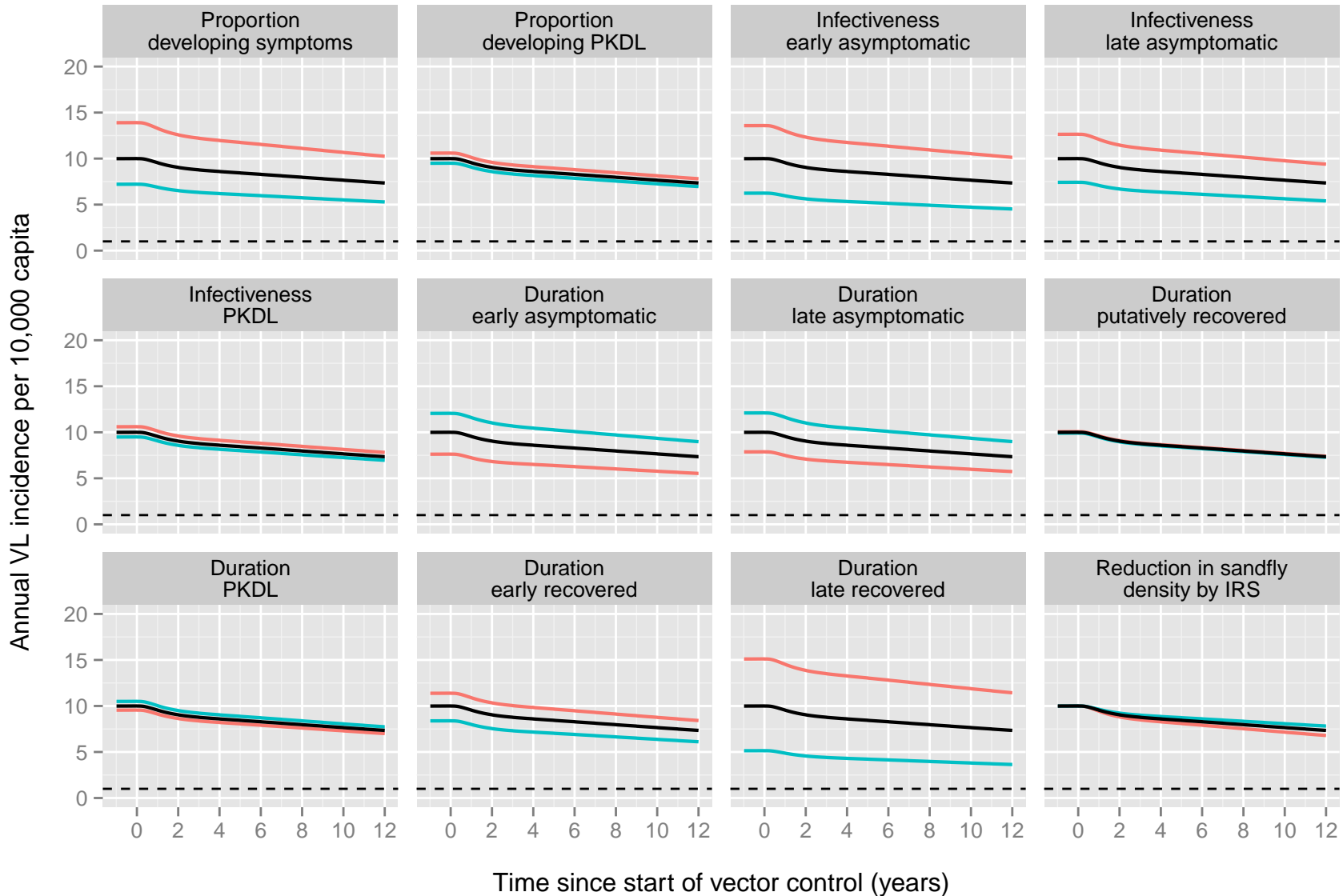
# Model 1

Sensitivity analysis — high (5/4) — low (4/5)



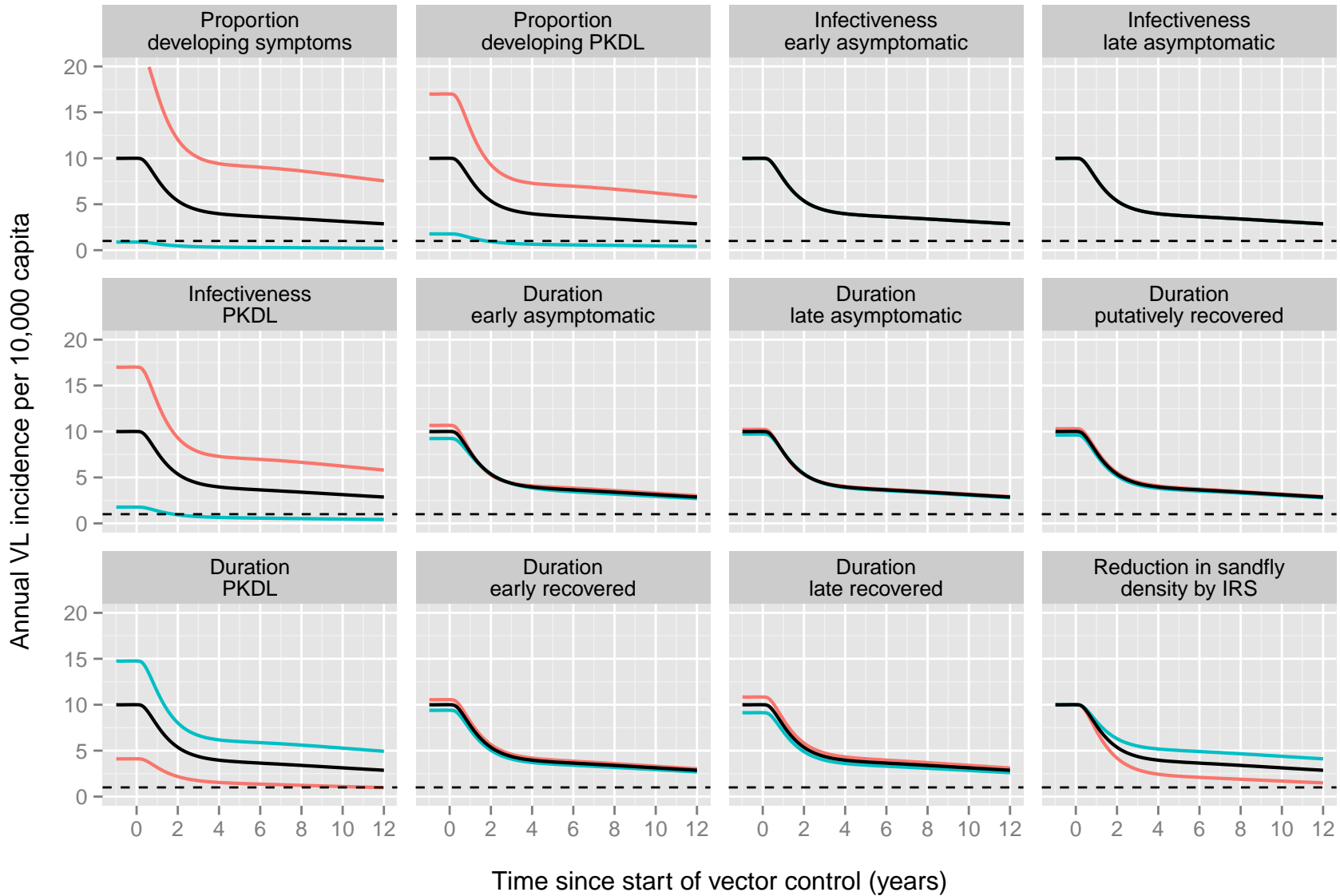
# Model 2

Sensitivity analysis — high (5/4) — low (4/5)



# Model 3

Sensitivity analysis — high (5/4) — low (4/5)



# Model 1 (zoom in on area around elimination target)

**Sensitivity analysis** — high (5/4) — low (4/5)

