

RT: Rectal temperature

#: Sacrifice

Fig. S1

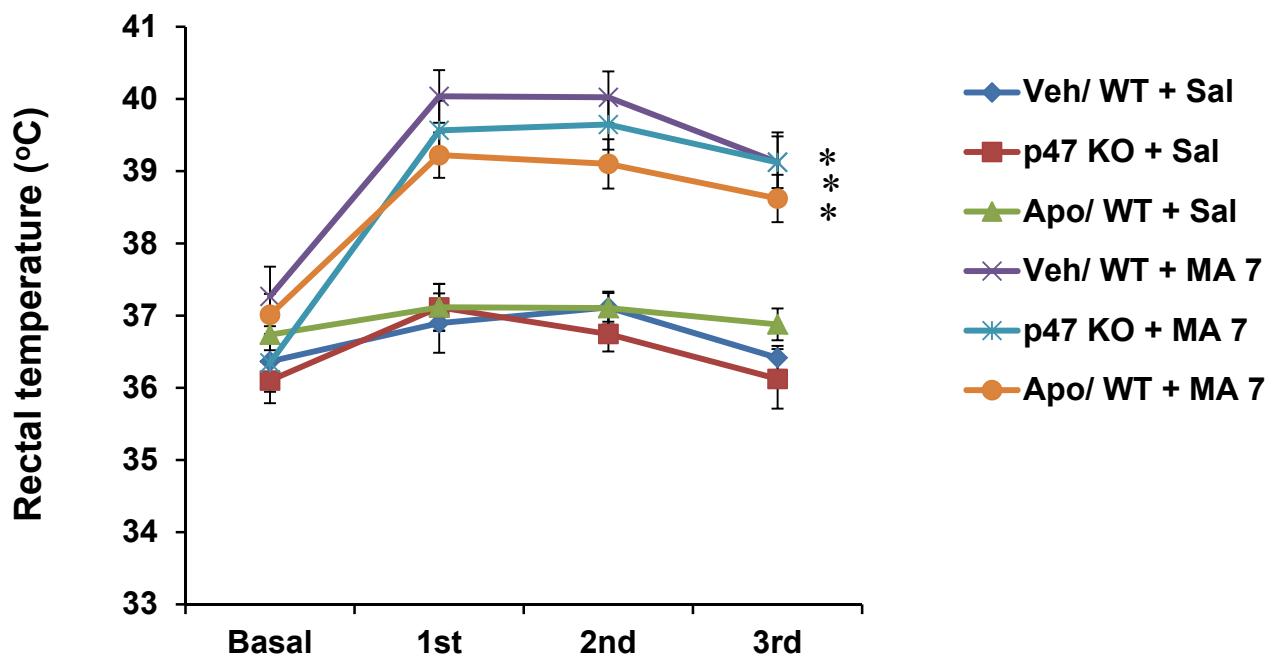
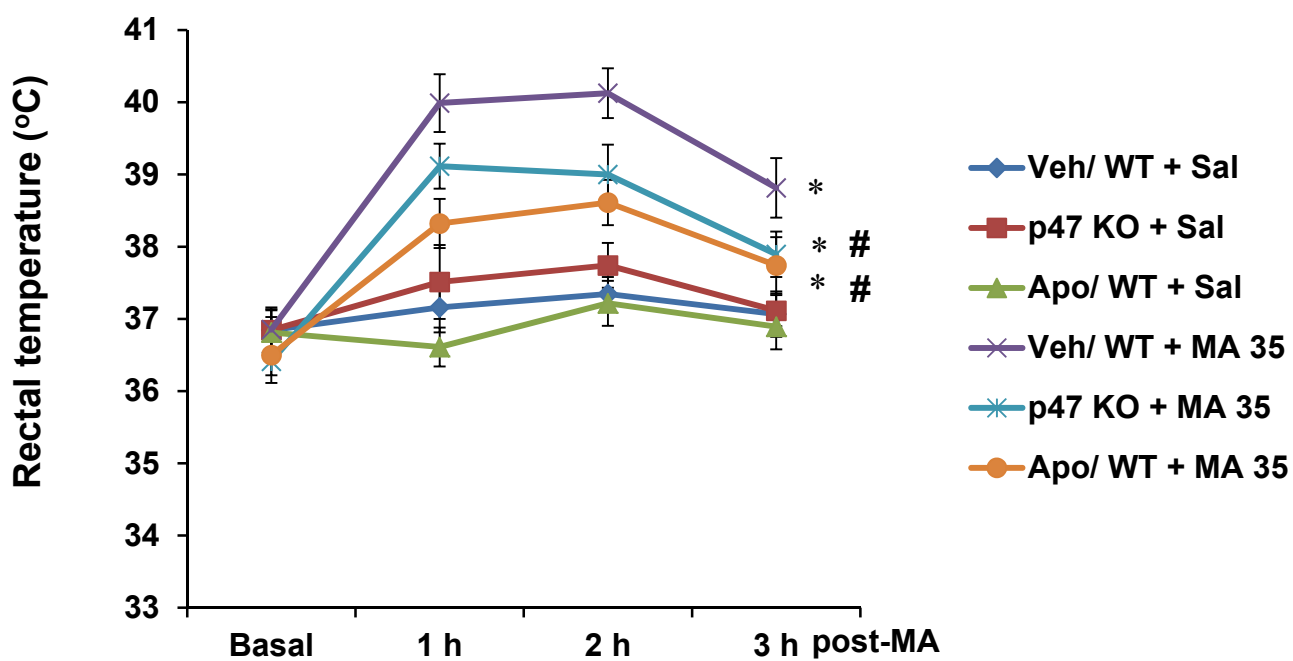
a**b**

Fig. S2

TH-immunoreactivity (TH-IR)

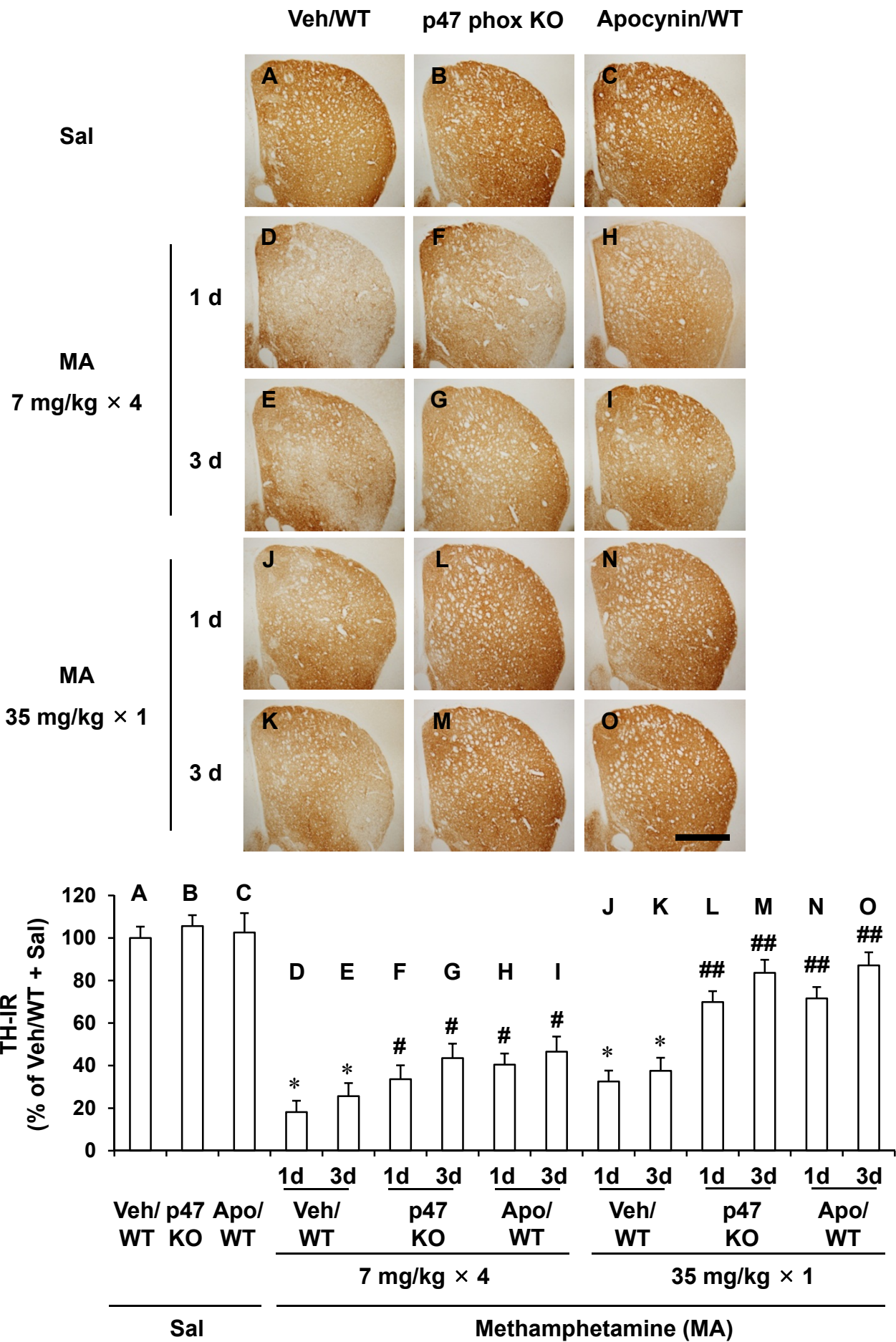


Fig. S3

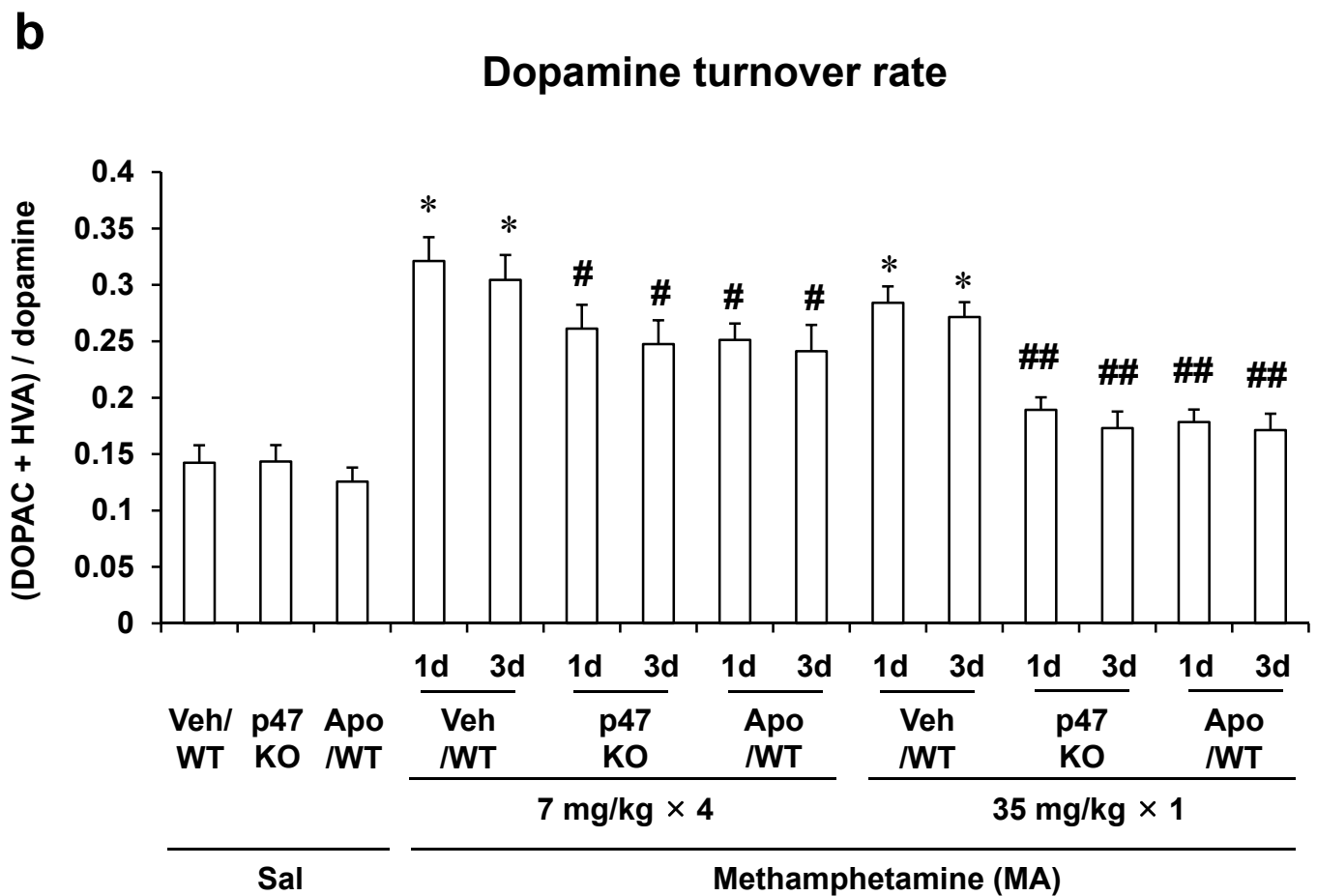
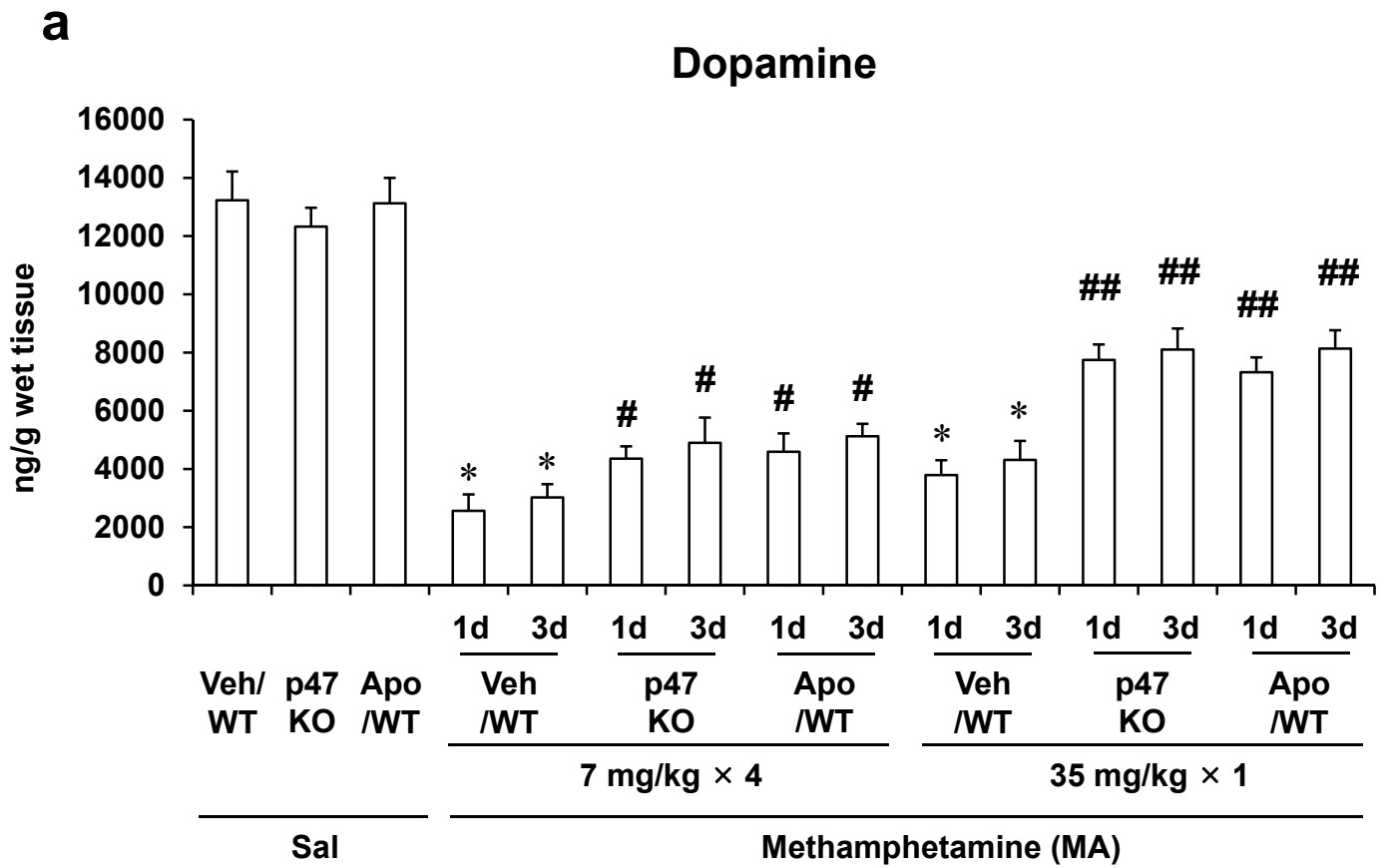
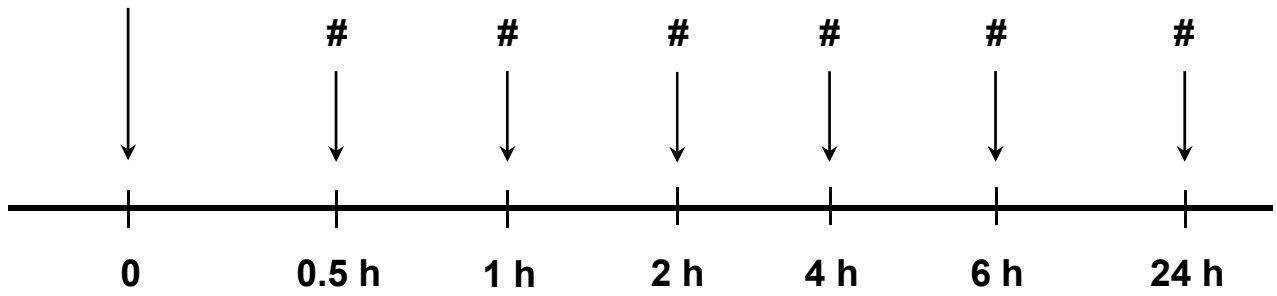


Fig. S4

a

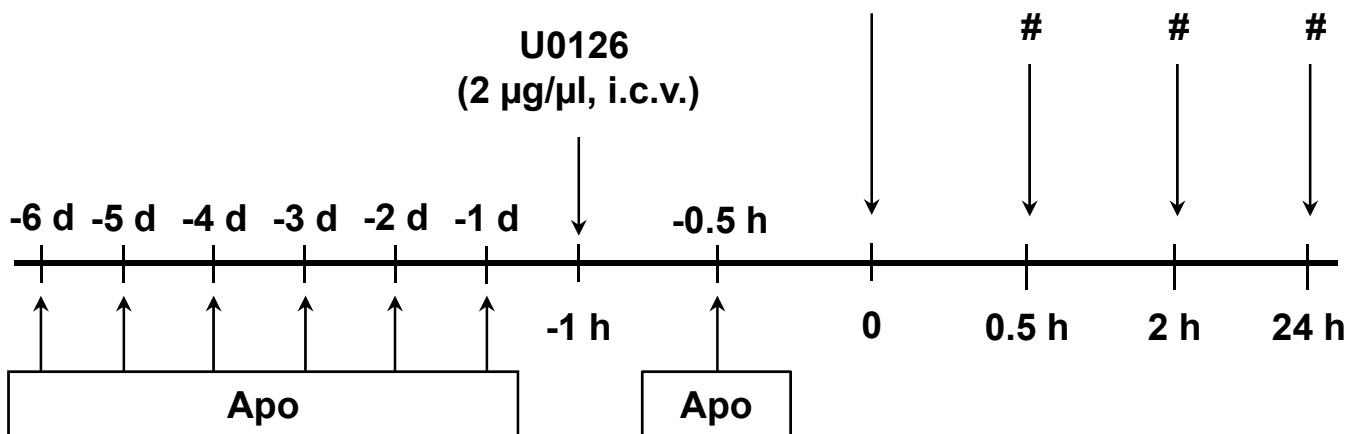
MA
(35 mg/kg, i.p.)



b

MA
(35 mg/kg, i.p.)

U0126
(2 μ g/ μ l, i.c.v.)



#: Sacrifice

Fig. S5

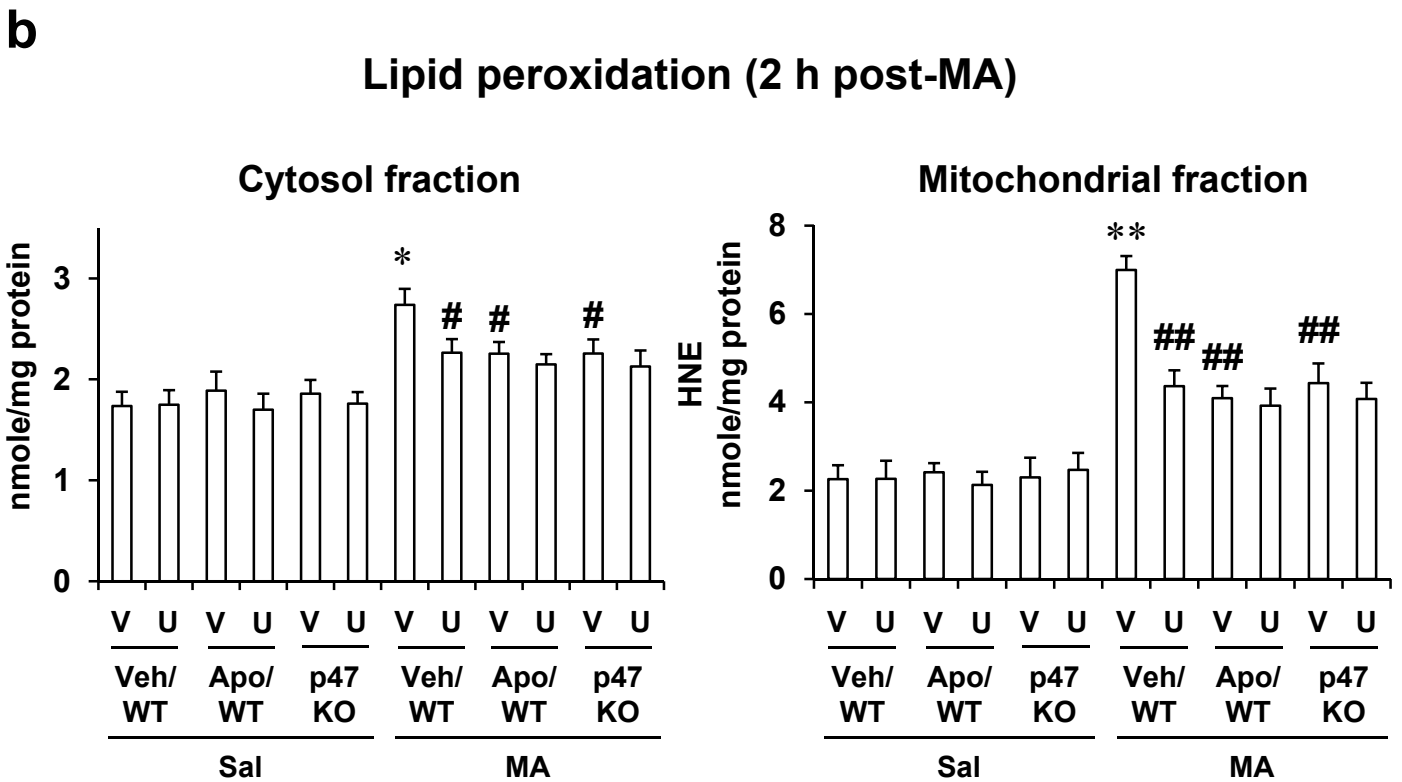
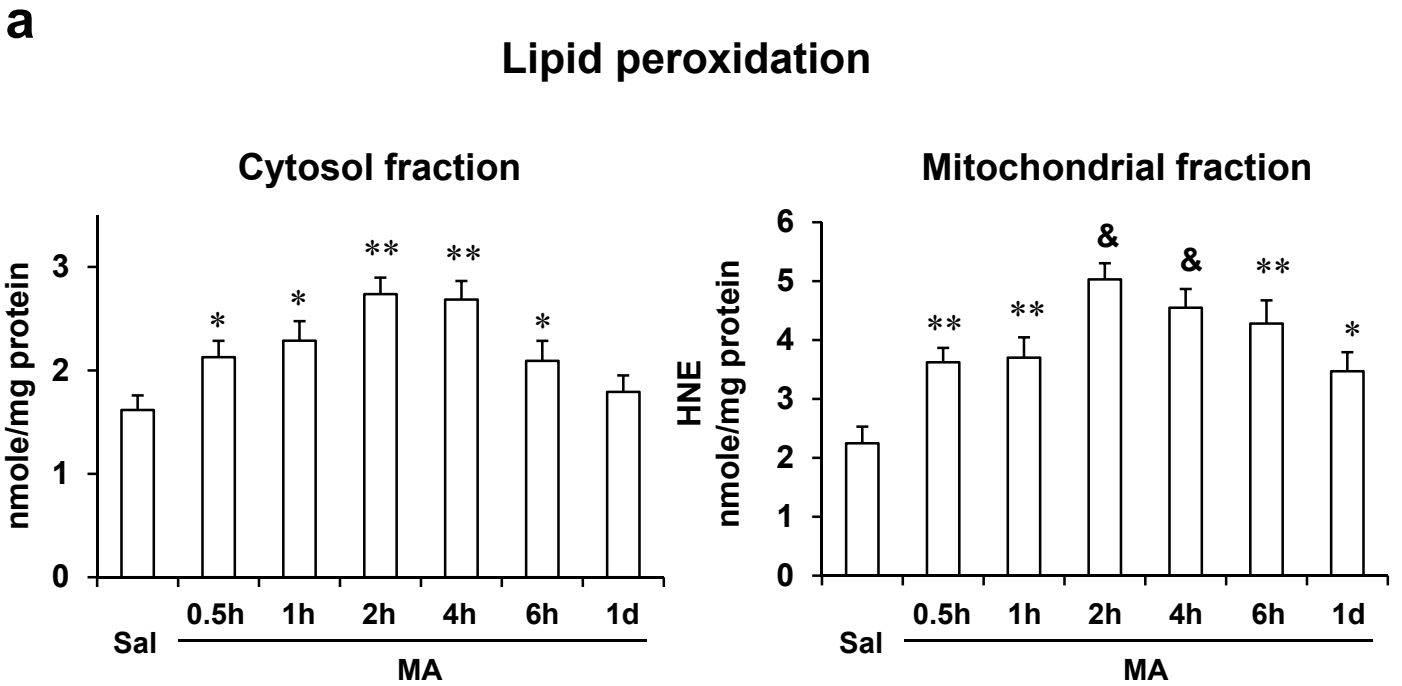


Fig. S6

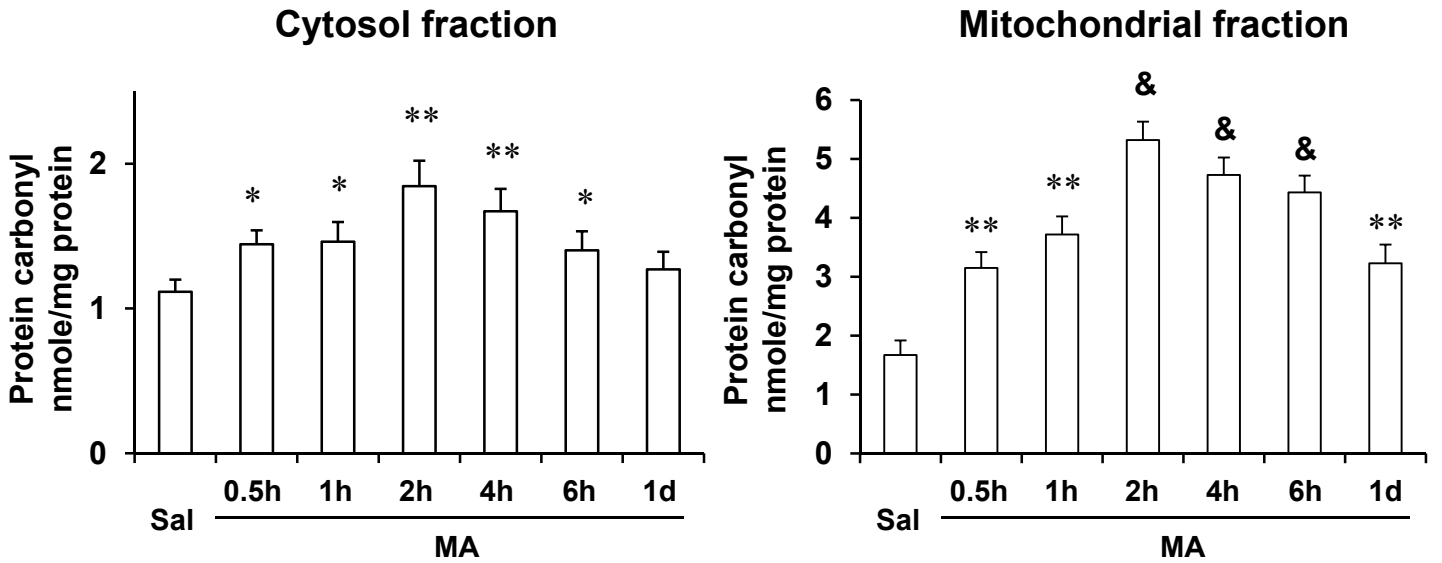
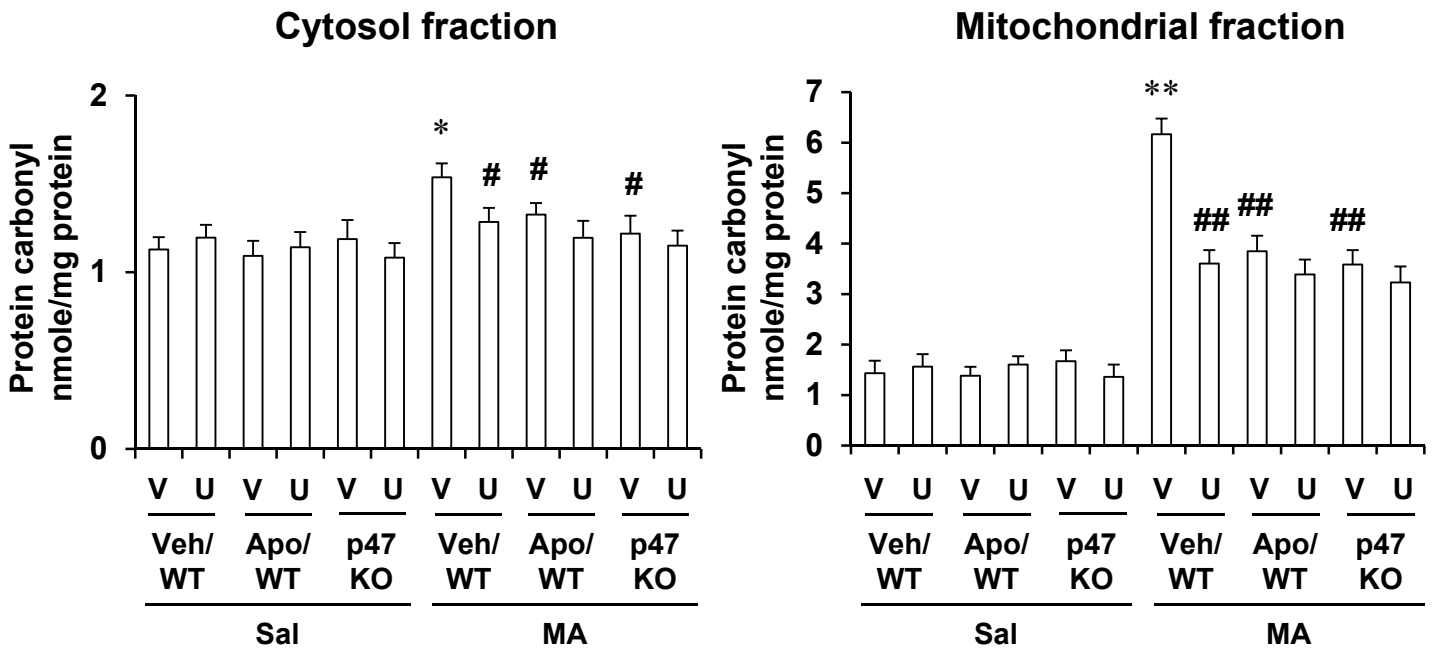
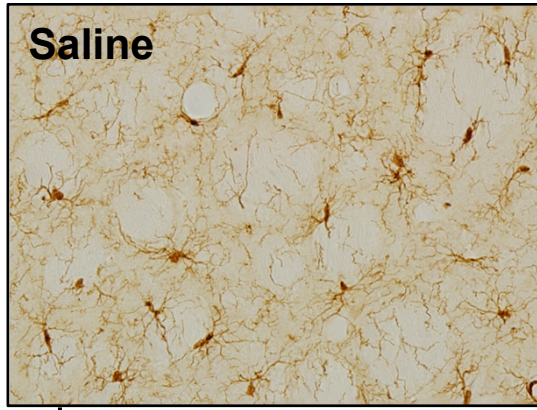
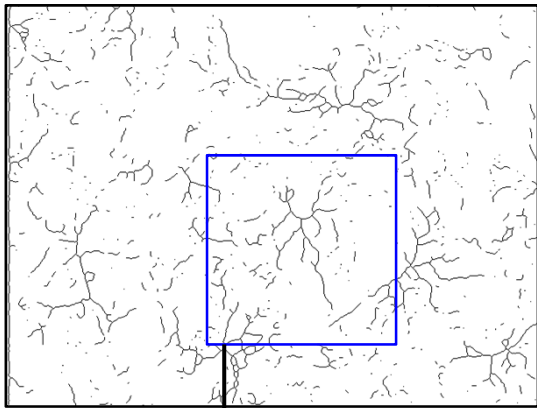
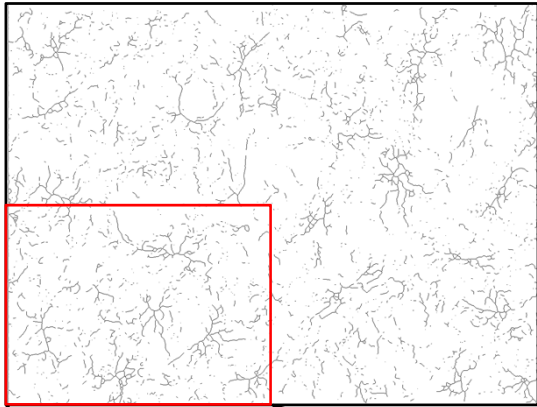
a**Protein oxidation****b****Protein oxidation (2 h post-MA)**

Fig. S7

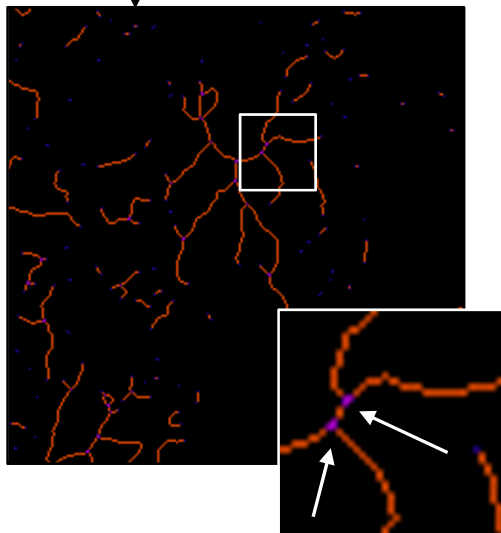
a-1



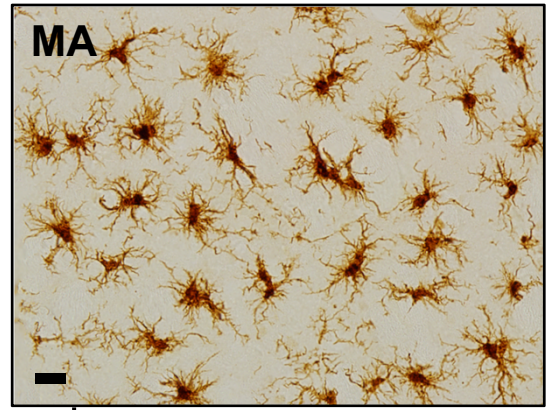
Skeletonize



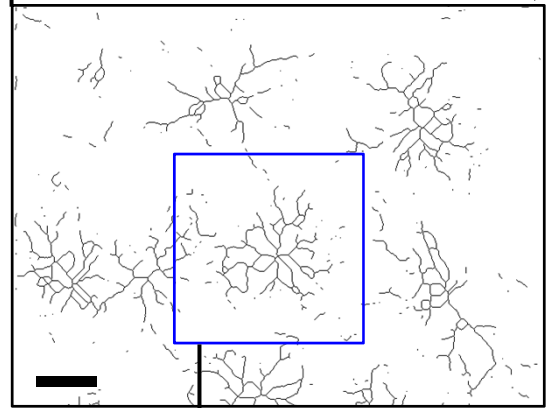
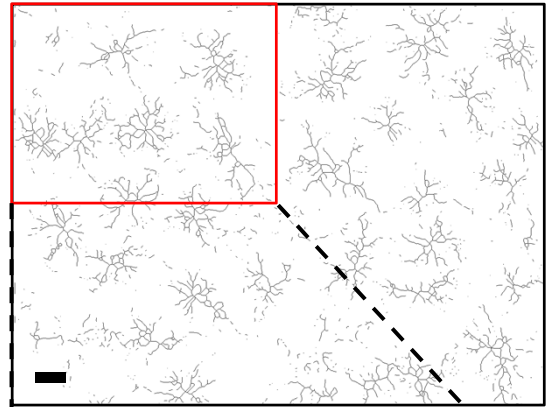
Skeleton analysis



a-2



Skeletonize



Skeleton analysis

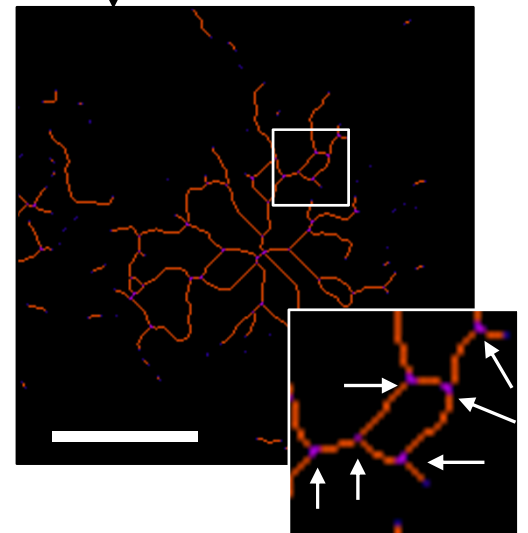


Fig. S8

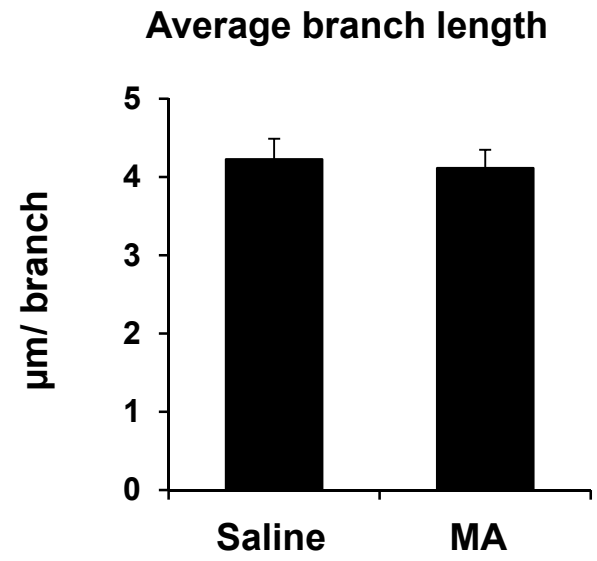
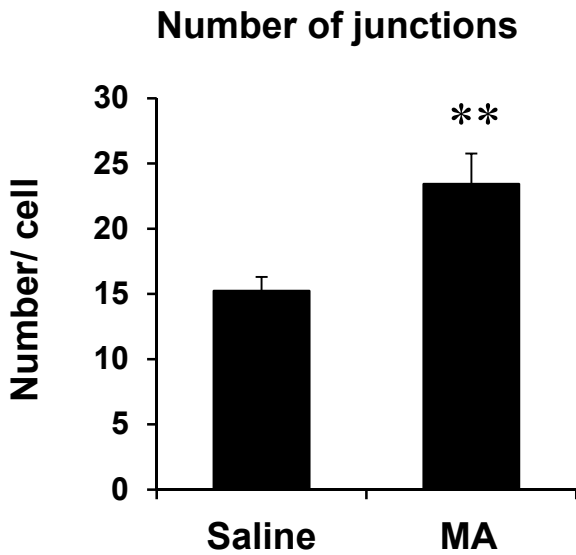
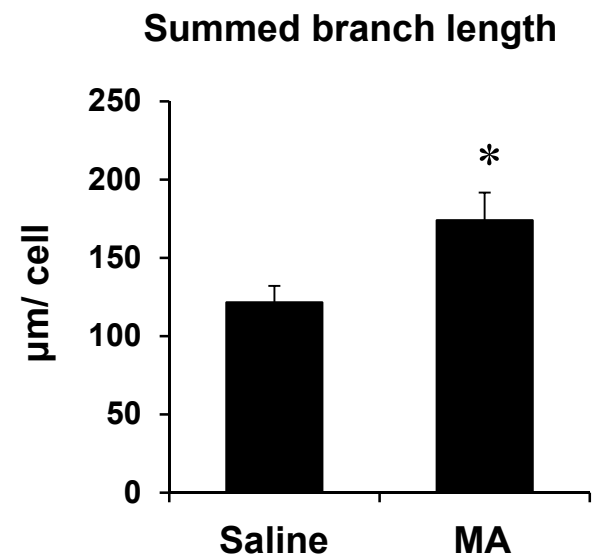
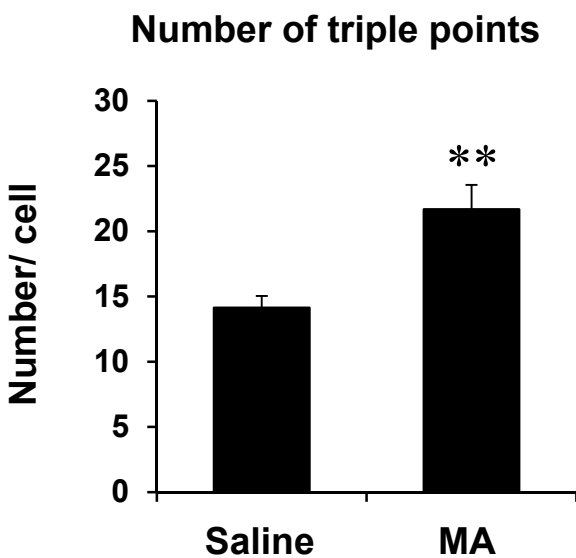
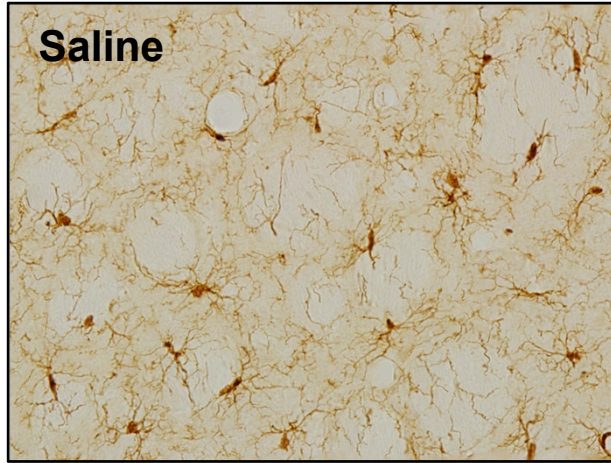
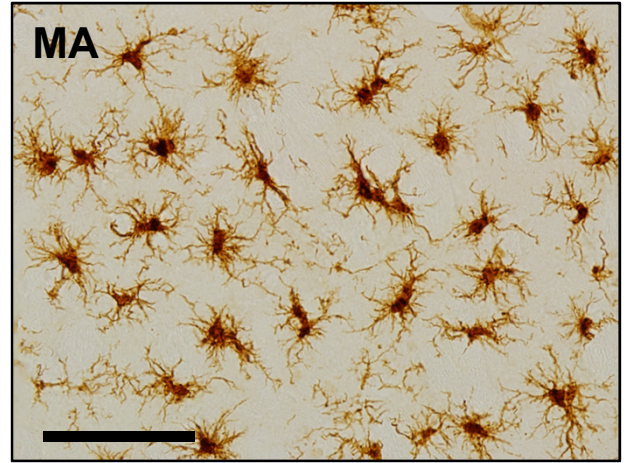
b-1**b-4****b-2****b-5****b-3**

Fig. S8 (continued)

c-1

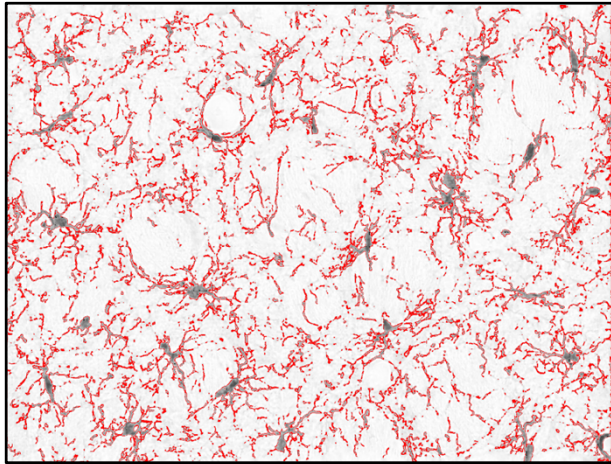


c-4



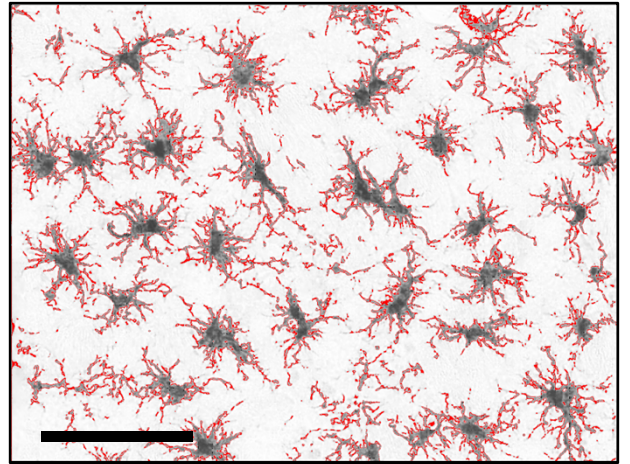
c-2

Automatic dark objects



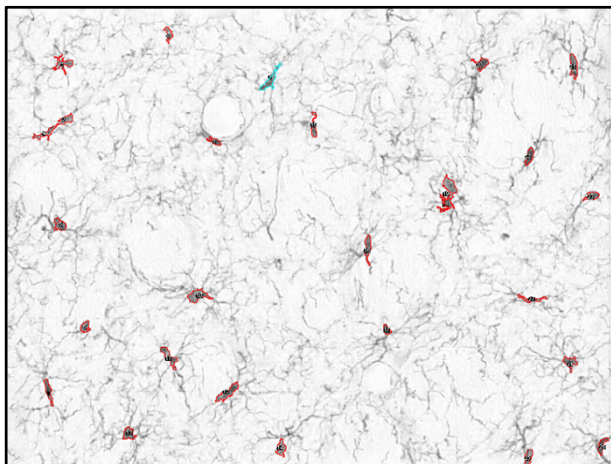
c-5

Automatic dark objects



c-3

Manual intensity selection



c-6

Manual intensity selection

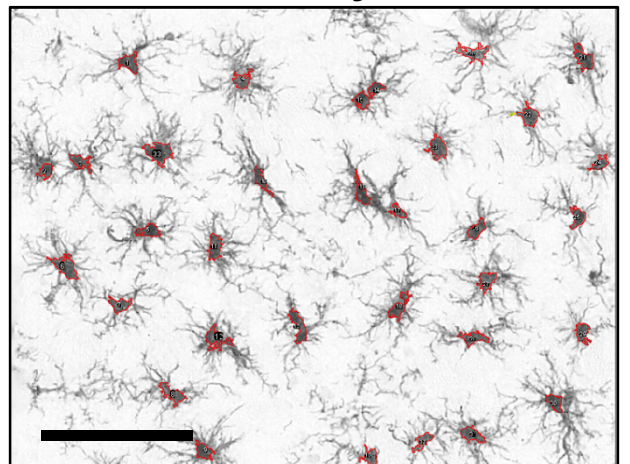
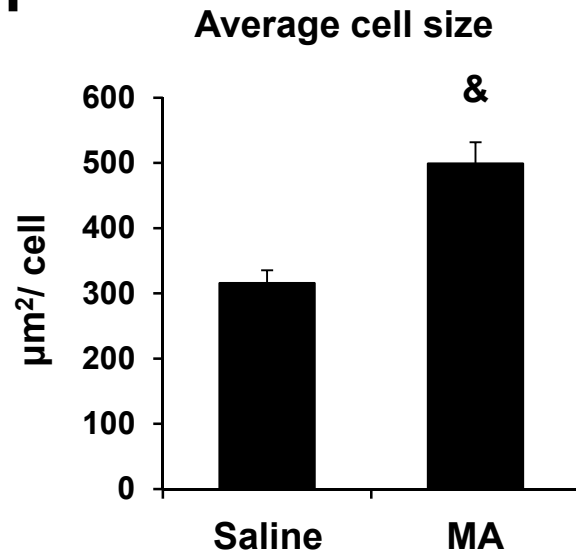
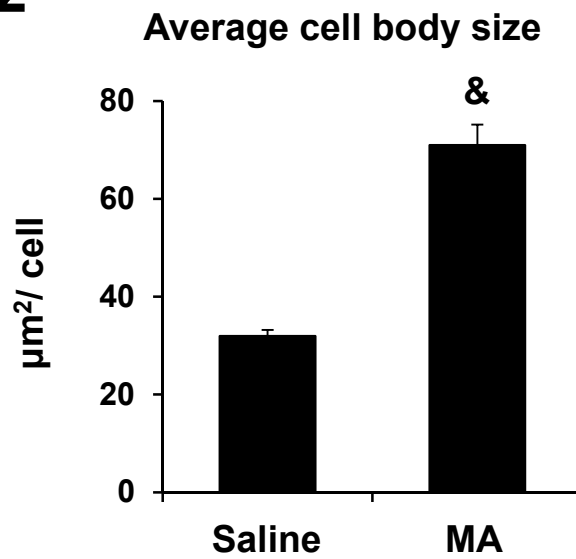


Fig. S8 (continued)

d-1



d-2



d-3

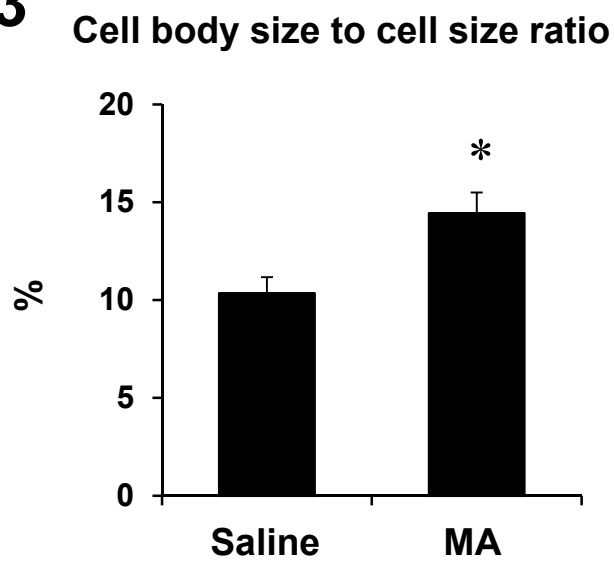


Fig. S8 (continued)