

# Zentella270587\_SFig1

**A**

```
1 MKRDHHQFQGRLSNHGTSSSSSISKDKMMVKKKEEDGGGNMDELAVLGYKVRSEMAEVALKLE
68 QLETMMSNVQEDGLSHLATDTVHYNPSELYSWLDNMLSELNPPPLPASSNGLDPVLPSPEICGFPAS
135 DYDLKVIPGNAIYQFPAIDSSSSSNNQNKRLKCSSPSMVTSTSTGTQIGGVIGTTVTTTTTTTA
202 AGESTRSVILVDSQENGVRLVHALMACAEAIQQNNLTAEALVKQIGCLAVSQAGAMRKVATYFAEA
269 LARRIYRLSPQNIQIDHCLSDTLQMHFYETCPYLKFAHFTANQAILEAFEGKKRVHVIDFSMNQGLQ
336 WPALMQALALREGGPPTFRLTGIGPPAPDNSDHLHEVGCKLAQLAEAIHVEFEYRGFVANSLADLDA
403 SMLELRPSDTEAVAVNSVFELHKLGRPGGIEKVLGVVKQIKPVIFTVVEQESNHNGPVFLDRFTES
470 LHYYSTLFDSLEGVNSQDKVMSEVYL GKQICNLVACEGPDVERHETLSQWGNRFGSGLAPAHLG
537 SNAFKQASMLLSVFNSGQYRVEESNGCLMLGWHTRPLITTSAWKLSTAAY
```

**B Predicted:**

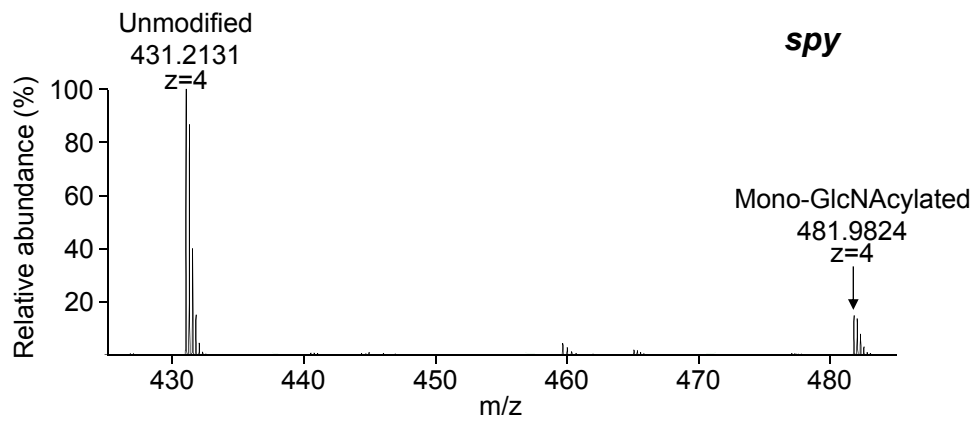
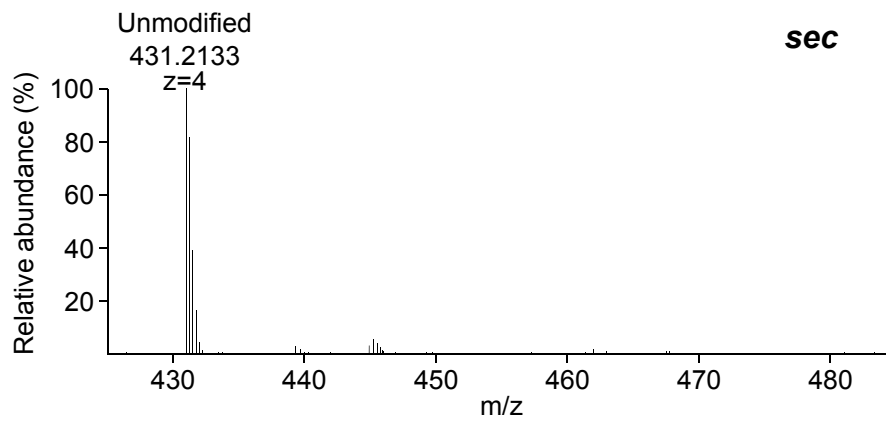
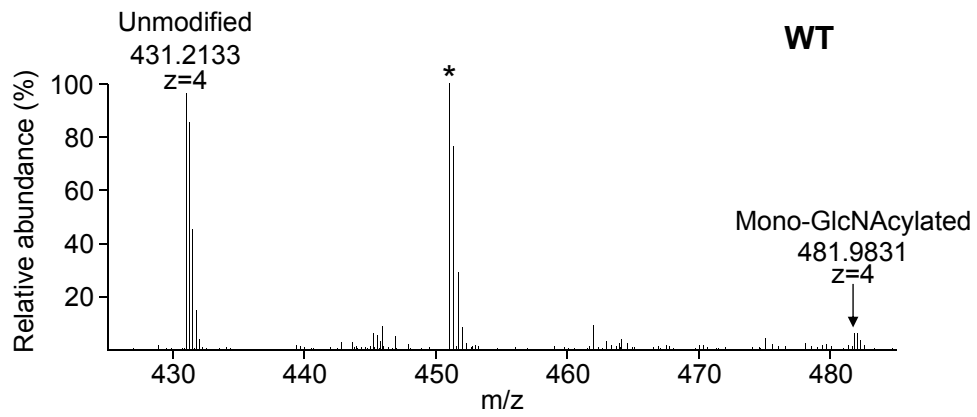
```
1 .....GYGGY.....
68 .....G.....
135 .....GGY.....Y..Y..GGG.....GG.YGGG..
202 ..Y.....G.....
269 .....
336 .....
403 .....Y.....
470 .....G.....
537 .....GG.....GG...
```

**C O-GlcNAc sites identified by ETD-MS analyses:**

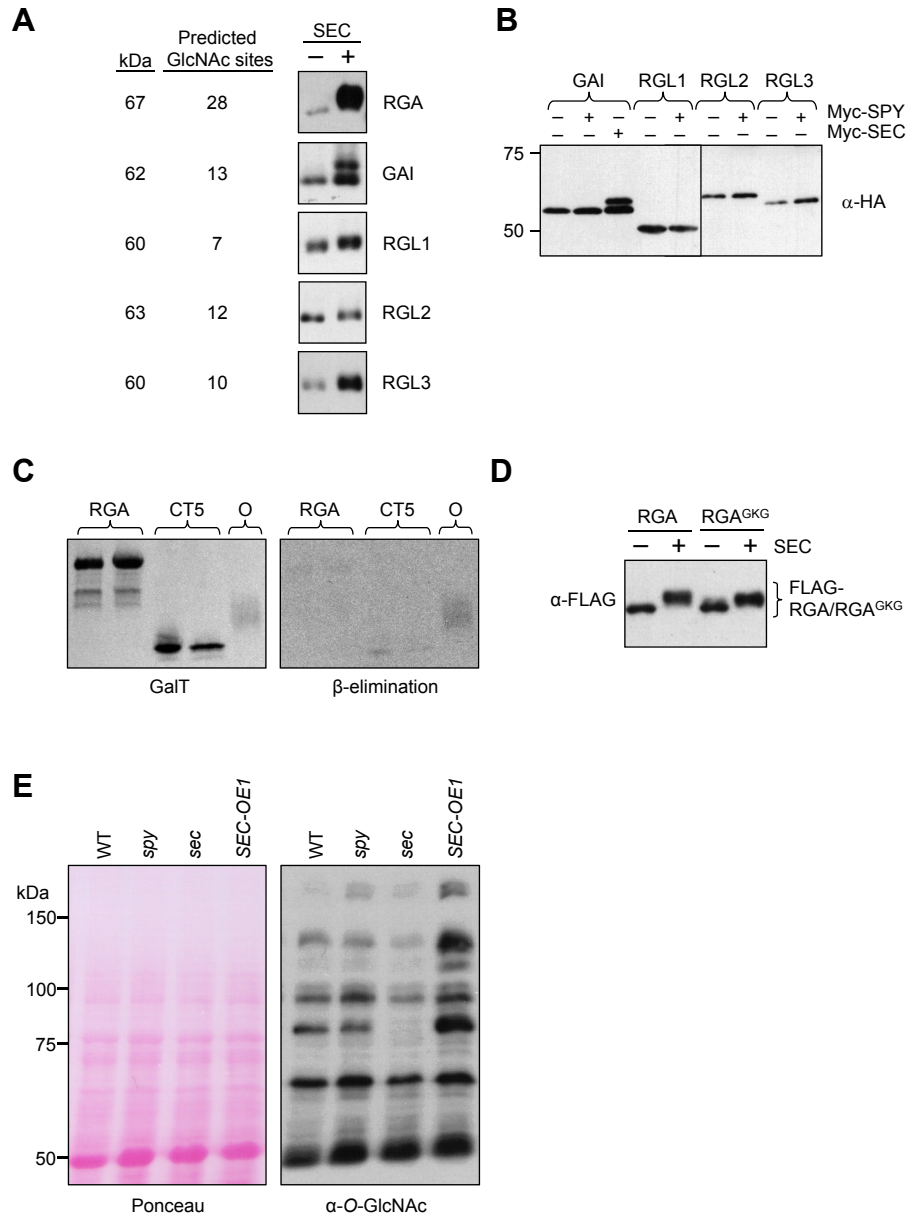
```
1 .....g...GGGGggg.g.....GG.....
68 .....G.....g.....g.....g.....GG.....g.....g
135 .....ggggg.....g.gg..g..GGGGg.g.....gg.gggggggg.
202 ..gg.....G.....
269 .....
336 .....
403 .....
470 .....gg.....g.....G.....
537 .....gg.....
```

# Zentella270587\_SFig2

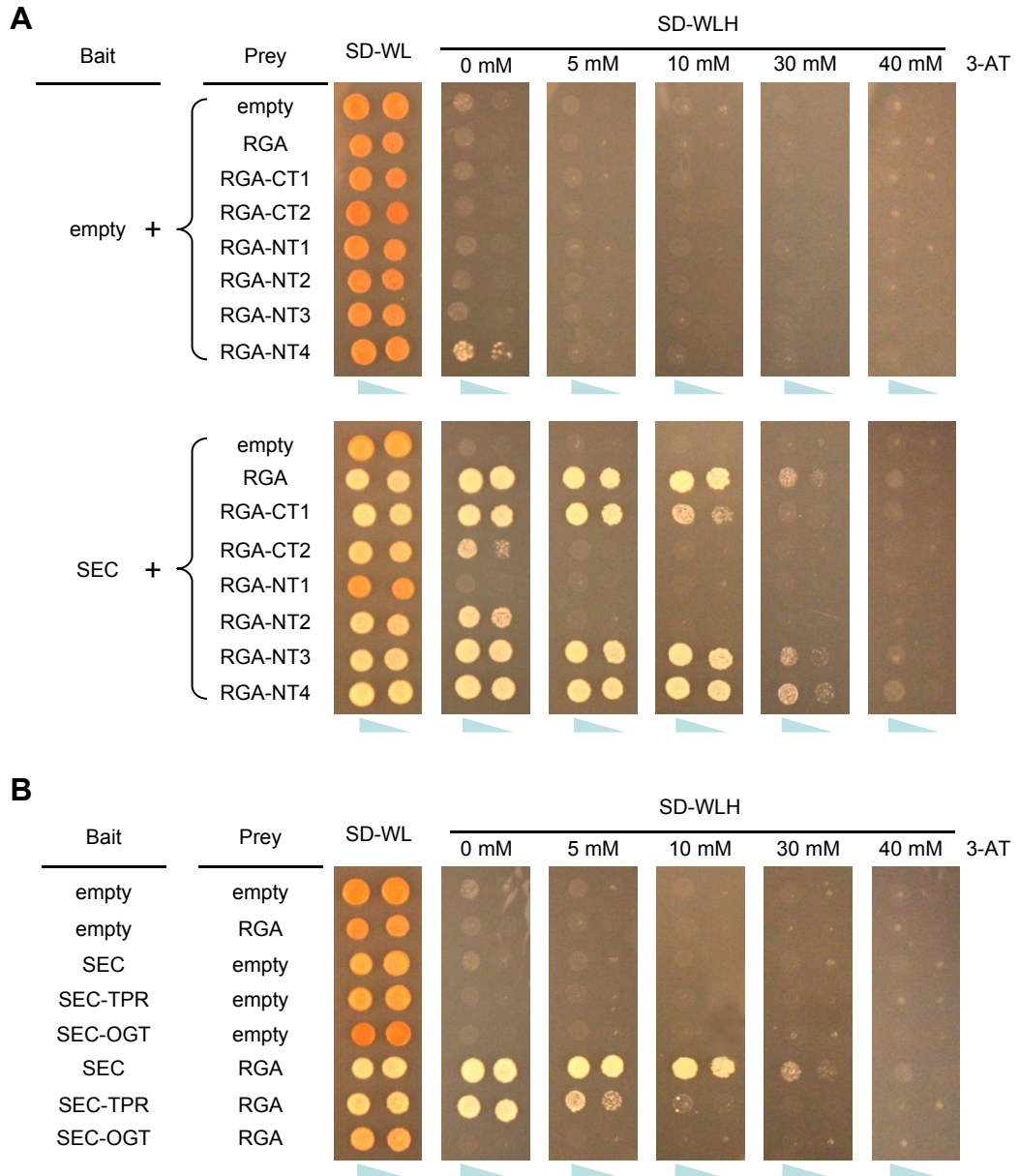
LSNHGTSSSSSSISKDK

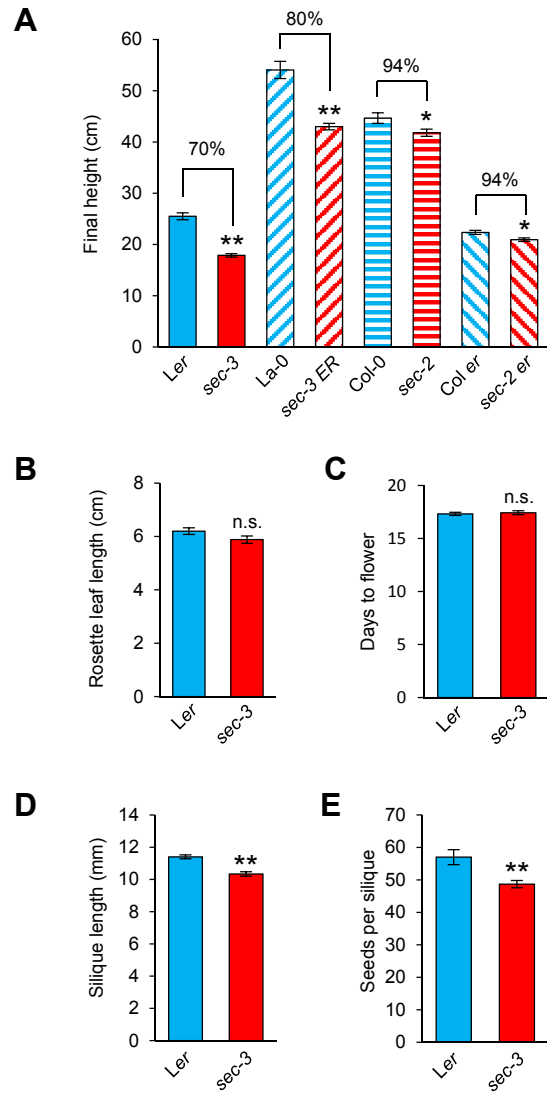


# Zentella270587\_SFig3

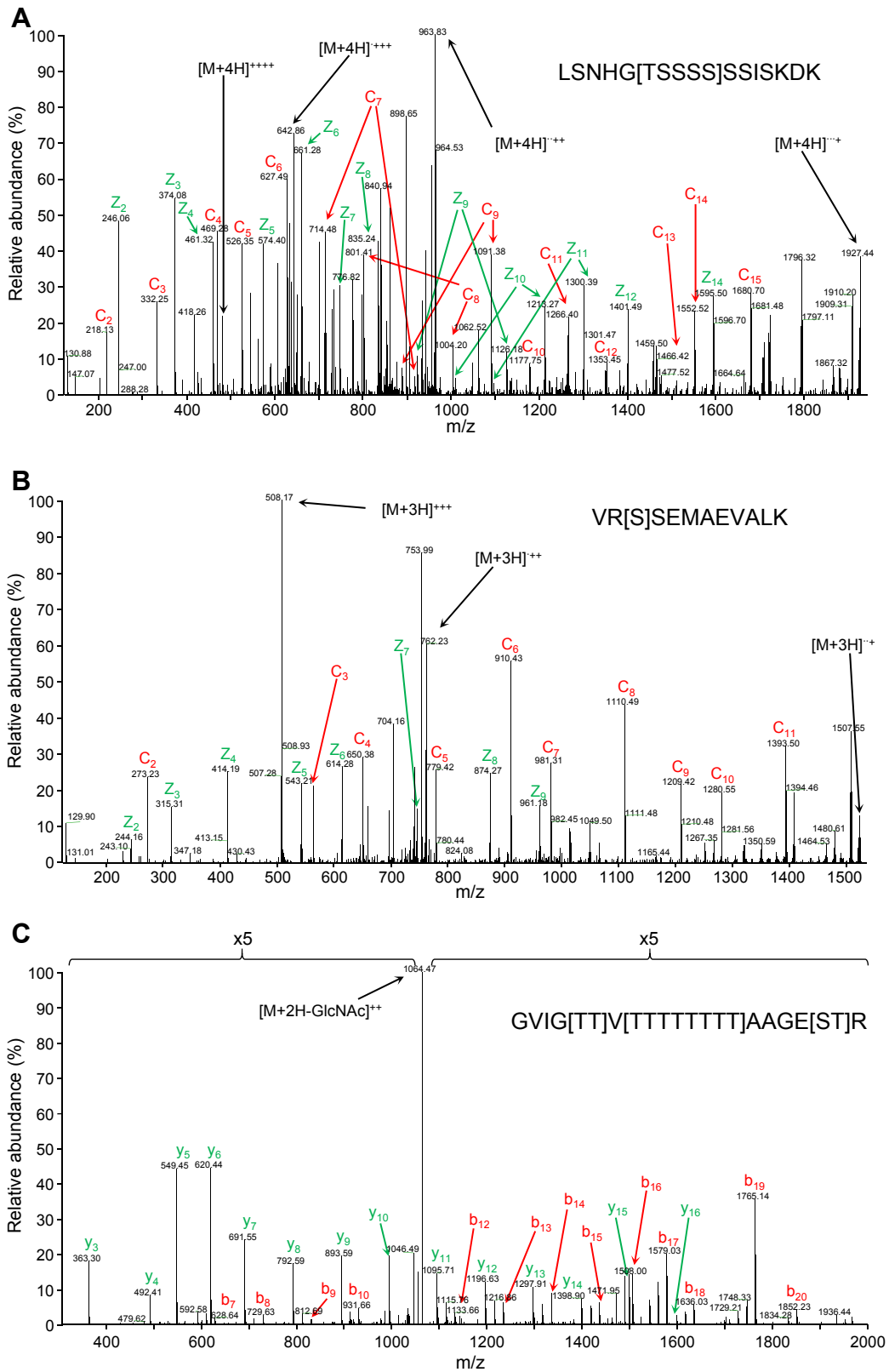


# Zentella270587\_SFig4





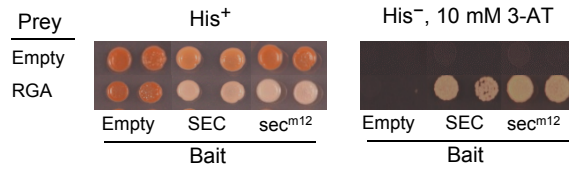
# Zentella270587\_SFig6



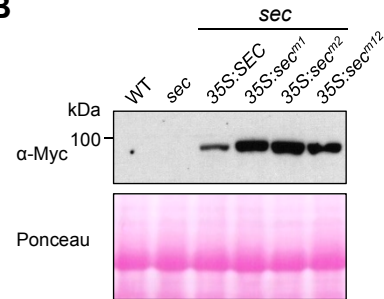


# Zentella270587\_SFig8

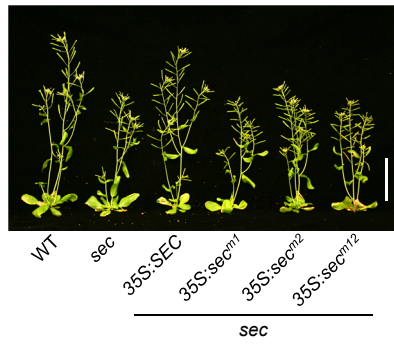
**A**



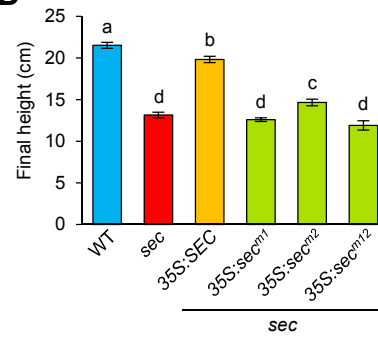
**B**



**C**

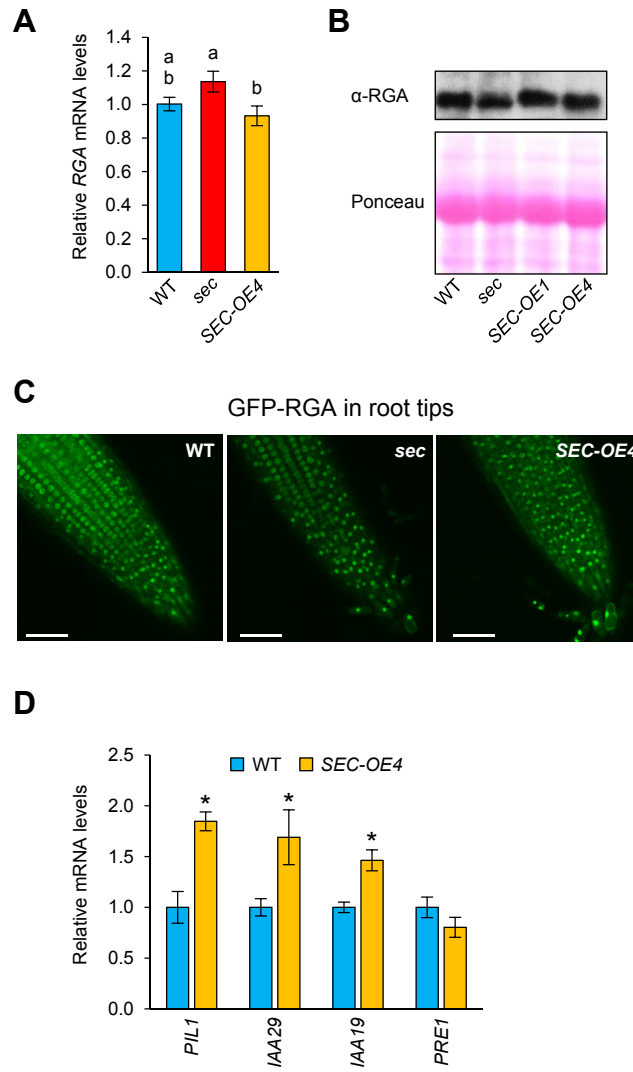


**D**





# Zentella270587\_SFig9



# Zentella270587\_SFig10

