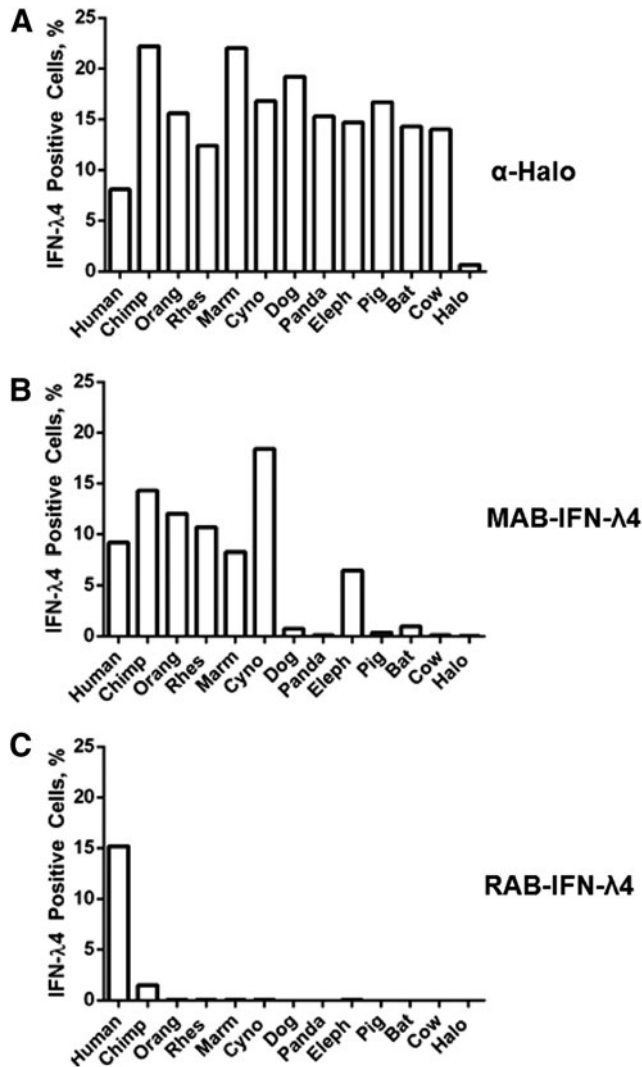


Supplementary Data



SUPPLEMENTARY FIG. S1. Flow cytometry screening for detection of IFN-λ4 orthologs. HepG2 cells were transfected with expression constructs that produce IFN-λ4-Halo orthologs and an empty Halo-tag vector in single replicates. Graphs represent flow cytometry results with corresponding antibodies—α-Halo (A), MAB-IFN-λ4 (B), and RAB-IFN-λ4 (C).